



# JUPITER PLAZA

**WILLIAM LEMASTERS, SIOR**

Market Director

214-998-8076

wlemasters@mercerc-company.com

The information contained herein has been given to us by the owner of the property or other sources we deem reliable. We have no reason to doubt its accuracy, but we do not guarantee it. All information should be verified before purchase or lease.

# PLAZA INFORMATION

## JUPITER PLAZA

### 1025 S JUPITER ROAD

Space Available: 7,432  
Office SF: 2,200  
100% HVAC  
15' Clear Height  
1 Oversized Ramp  
Power: 3 Phase

### 1121 S JUPITER ROAD

Space Available: 7,737 SF  
Office SF: ±2,500  
100% HVAC  
15' Clear Height  
Power: 3-Phase  
1 (12x10) Ramp  
Fully Insulated Warehouse  
Prime Visibility on Jupiter Rd.

### 1041 S JUPITER ROAD

Space Available: 8,481  
Office SF: 583  
100% HVAC  
15' Clear Height  
1 Full Size Dock Well  
1 Ramp  
Newly Renovated Office



# FOR LEASE - 1025 S JUPITER ROAD

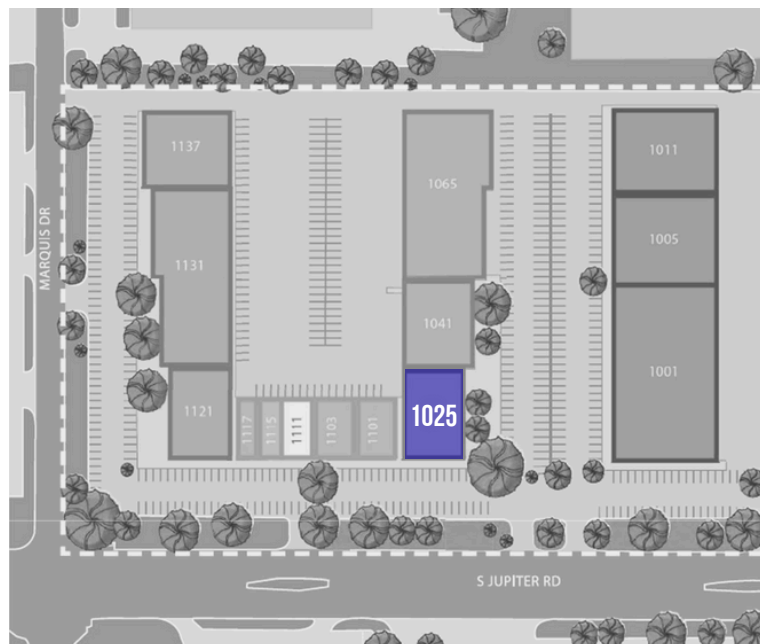
SPACE AVAILABLE: 7,432 SF

OFFICE SF: 2,200



## BUILDING FEATURES

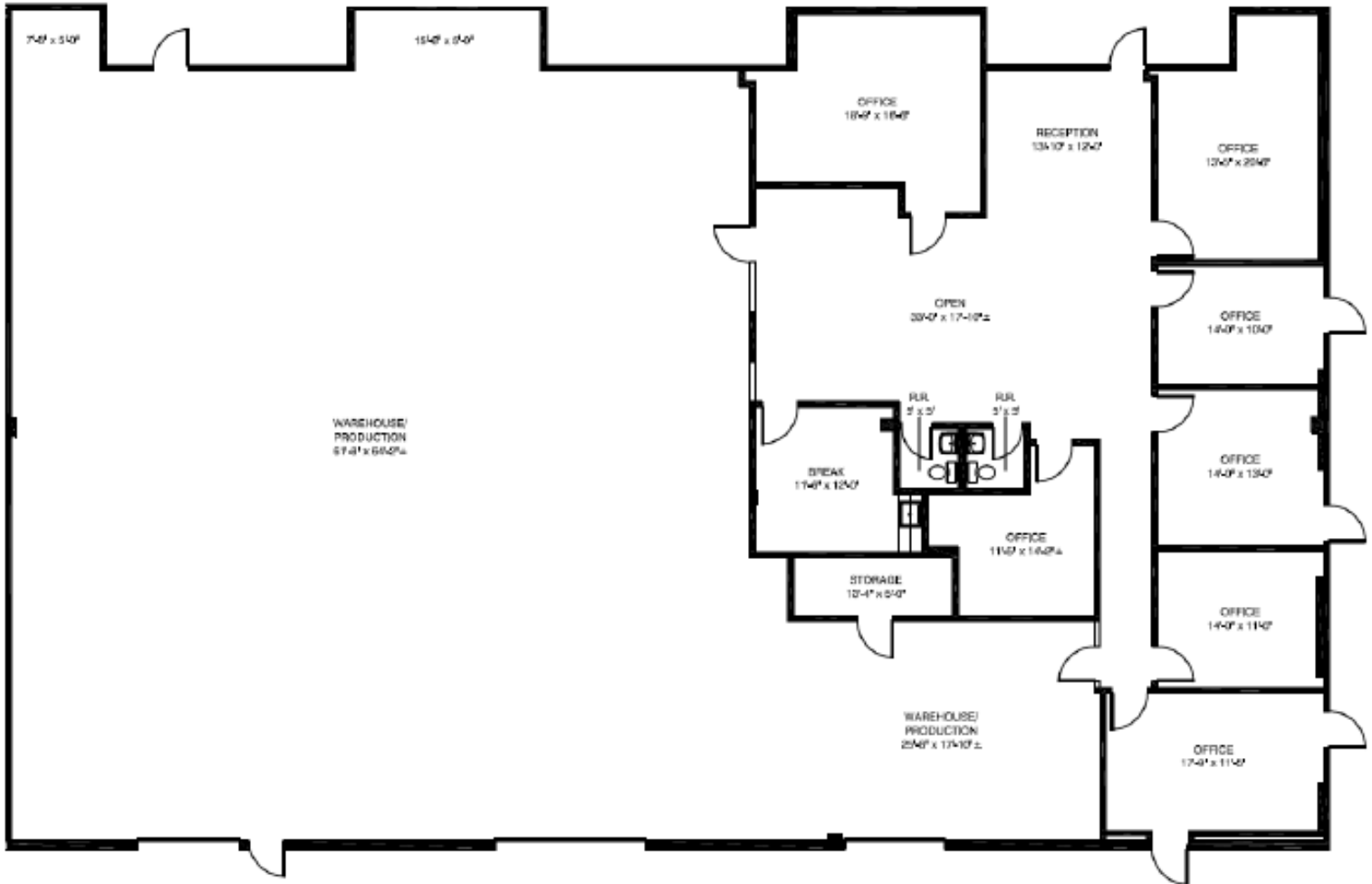
- ✓ 100% HVAC
- ✓ 15' Clear Height
- ✓ 1 Oversized Ramp
- ✓ Power: 3 Phase



# FOR LEASE - 1025 S JUPITER ROAD

SPACE AVAILABLE: 7,432 SF

OFFICE SF: 2,200

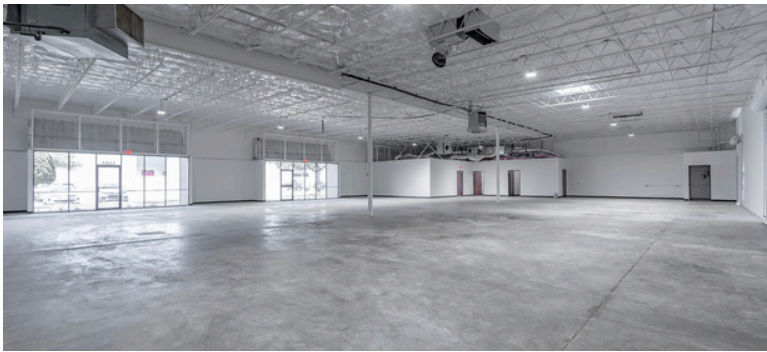




# FOR LEASE - 1041 S JUPITER ROAD

SPACE AVAILABLE: 8,481 SF

OFFICE SF: 583



## BUILDING FEATURES

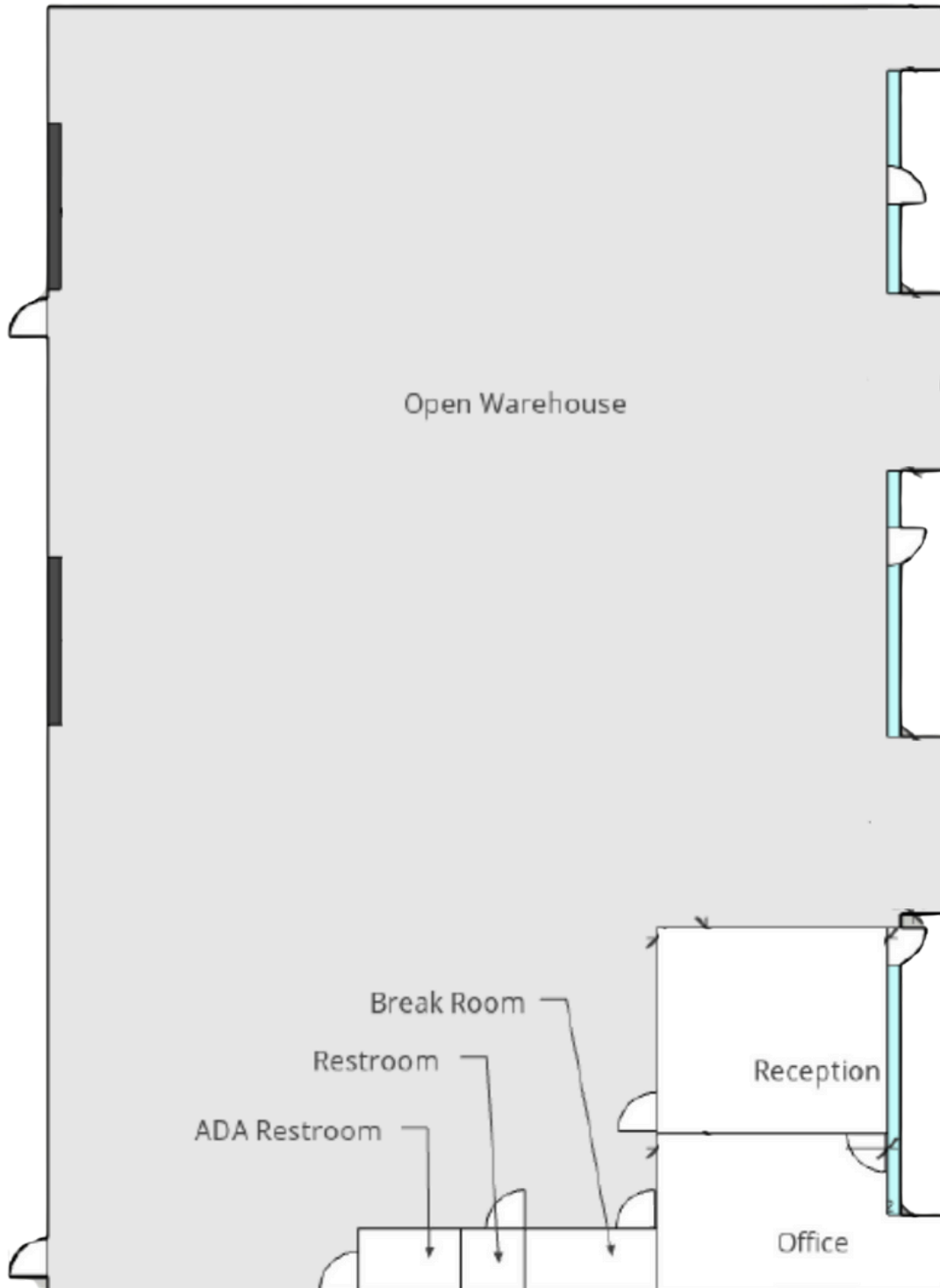
- ✓ 100% HVAC
- ✓ 15' Clear Height
- ✓ 1 Full Size Dock Well
- ✓ 1 Ramp
- ✓ Newly Renovated Office



# FOR LEASE - 1041 S JUPITER ROAD

SPACE AVAILABLE: 8,481 SF

OFFICE SF: 583





# FOR LEASE - 1121 S JUPITER ROAD

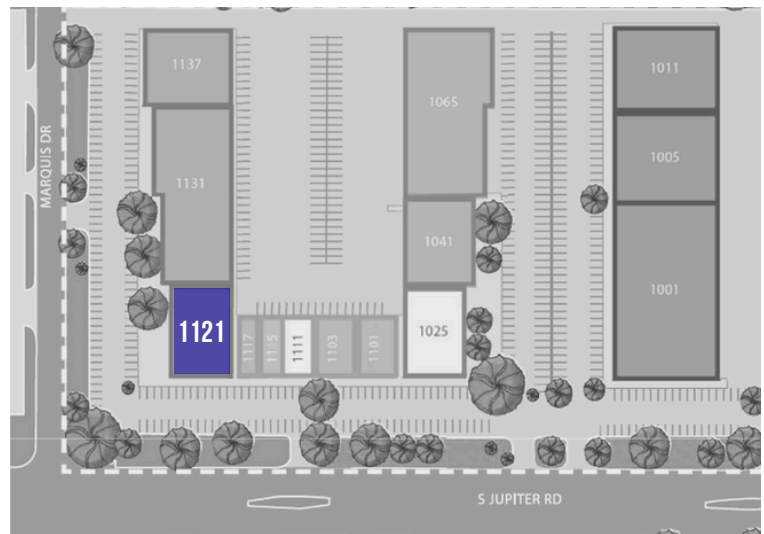
SPACE AVAILABLE: 7,737 SF

OFFICE SF: ±2,500



## BUILDING FEATURES

- ✓ 100% HVAC
- ✓ 15' Clear Height
- ✓ Power: 3-Phase
- ✓ 1 (12x10) Ramp
- ✓ Full Insulated Warehouse
- ✓ Prime Visibility on Jupiter Rd.



# FOR LEASE - 1121 S JUPITER ROAD

SPACE AVAILABLE: 7,737 SF

OFFICE SF: ±2,500

