



3200 Charles Page Boulevard Tulsa, OK 74127

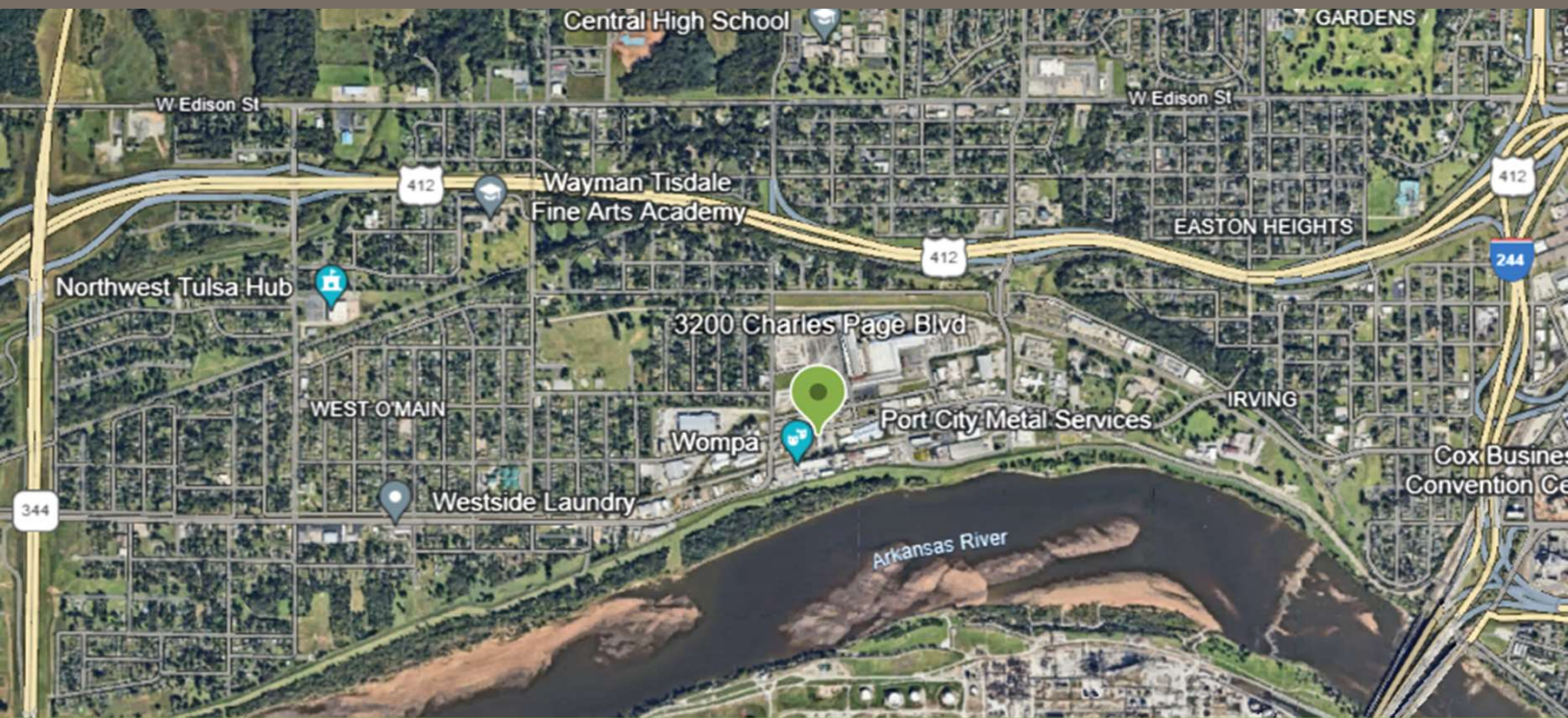


- 7,518 +/- SF Main Floor
- 2,350 +/- SF Basement
- Zoned IM
- New Roof
- .76 +/- acre lot
- 3 OH Doors – 2 Grade Level, 1 Ramped
- Historic art deco era of Tulsa's West O'Main district
- Designed by Bruce Alonzo Goff
- Original metal grid still in place for block wall restoration

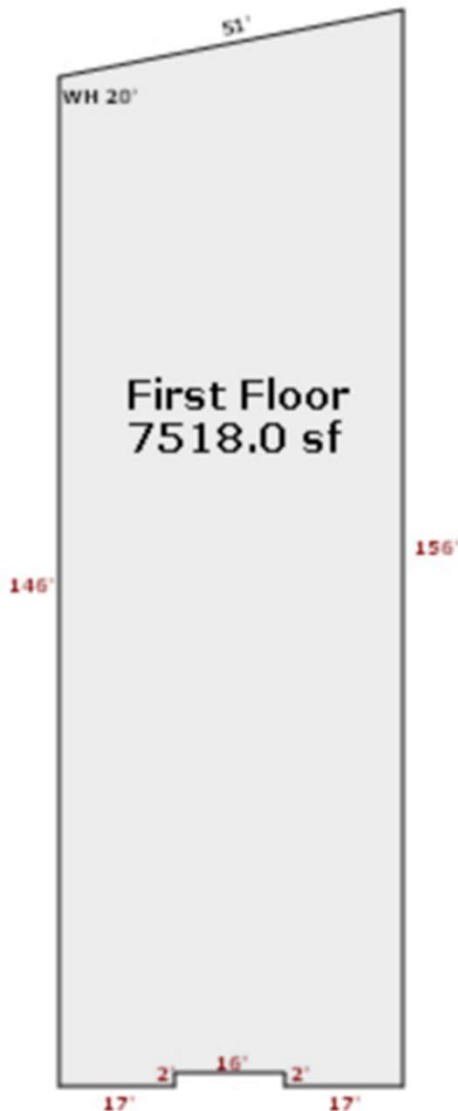
Contact:

Patrick Fox (918) 231-2346
Patrick@foxandassociates.com

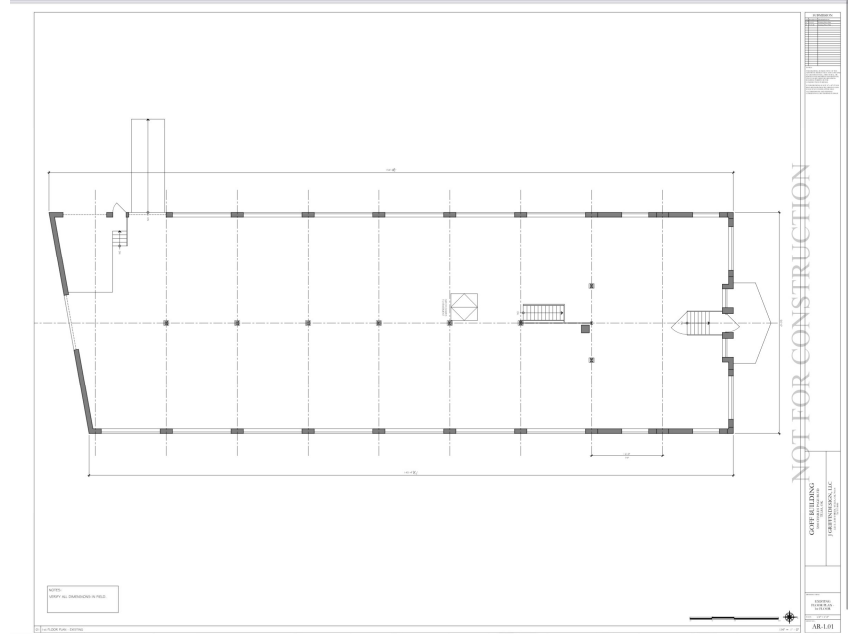
Kirk Voss (352) 454-0645
Kirk@foxandassociates.com



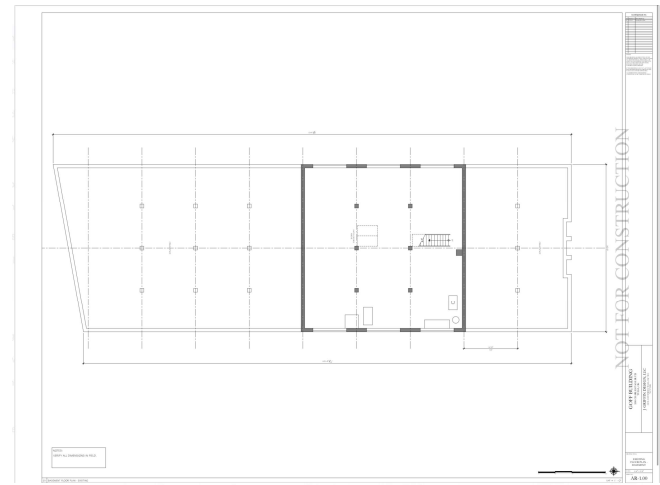
3200 Charles Page Boulevard Tulsa, OK 74127



Warehouse 7,518 SF



Basement 2,350 SF



Contact:
Patrick Fox (918) 231-2346
Patrick@foxandassociates.com

Contact:
Kirk Voss (352) 454-0645
Kirk@foxandassociates.com