

Office building for lease

Franklin Park | 1520
1520 E Franklin Street
Chapel Hill, NC 27514



Entire office building for lease

Offering Summary

Lease Rate:	\$25.50 SF/yr (Full Service)
Building Size:	7,188 SF
Available SF:	7,188 SF
Year Built:	1995
Parking Ratio:	3.00/1,000 SF
Market:	Raleigh/Durham
Submarket:	Orange County

Property Description

Located in the heart of Chapel Hill off busy E. Franklin Street with numerous amenities located at nearby University Place, Village Plaza, The Shops at Eastgate and Rams Plaza.

Get more information

Arnold Siegmund

Principal, Landlord Representation
D 919 420 1573
arnold.siegmund@avisonyoung.com



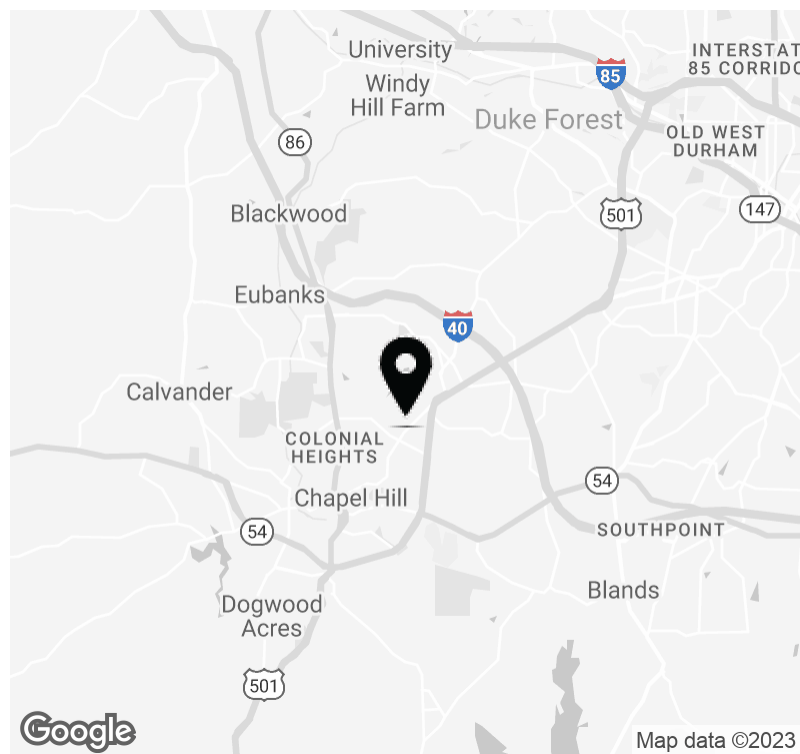
Map data ©2023 Imagery ©2023, Maxar Technologies, U.S. Geological Survey

Property Highlights

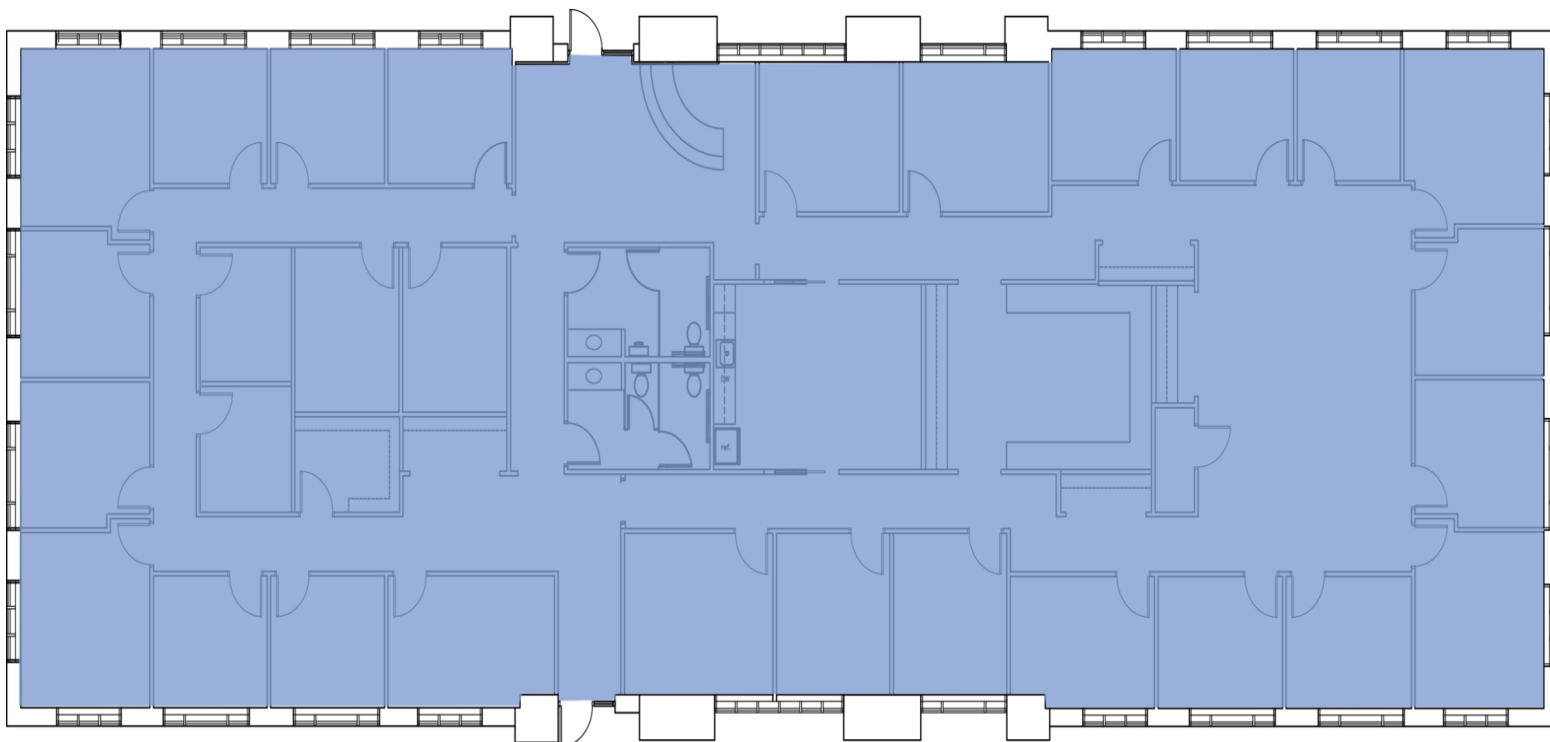
- Tenant improvement allowance negotiable
- Professionally managed and maintained
- 15% core factor

Spaces	Lease Rate	Space Size
Suite 100	\$25.50 SF/yr	7,188 SF

Demographics	1 Mile	3 Miles	5 Miles
Total Households	3,168	24,099	50,408
Total Population	7,854	64,939	121,707
Average HH Income	\$117,719	\$106,047	\$106,752



Arnold Siegmund
 Principal, Landlord Representation
 D 919 420 1573
 arnold.siegmund@avisonyoung.com



Legend

■ Available

Available Spaces

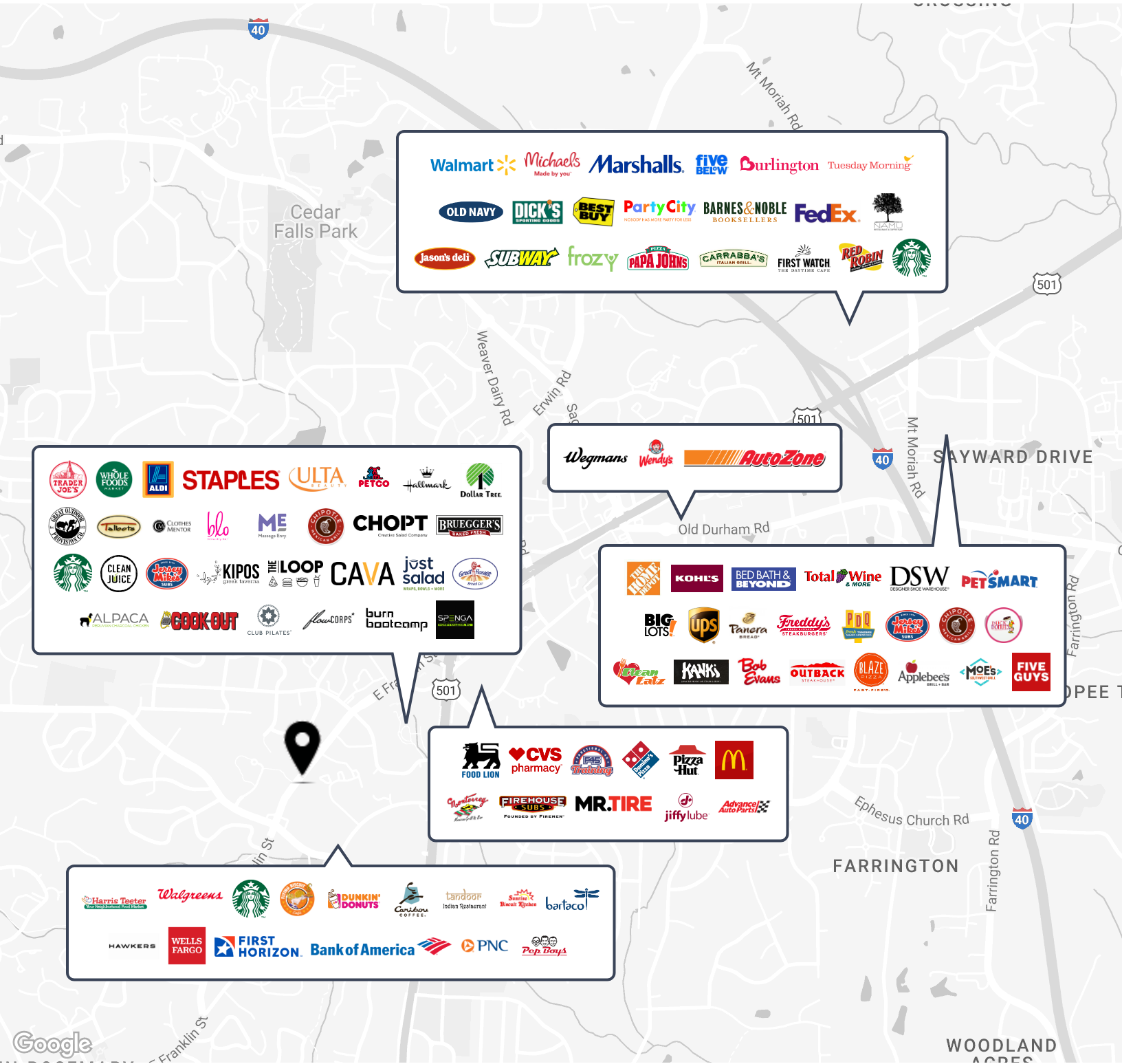
Suite	Tenant	Size	Type	Rate
■ Suite 100	Available	7,188 SF	Full Service	\$25.50 SF/yr



Arnold Siegmund
Principal, Landlord Representation
D 919 420 1573
arnold.siegmund@avisonyoung.com

Office building for lease

1520 E Franklin Street



AVISON YOUNG

Arnold Siegmund
Principal, Landlord Representation
D 919 420 1573
arnold.siegmund@avisonyoung.com

Avison Young - Raleigh-Durham | 5440 Wade Park Boulevard, Suite 200 | Raleigh, NC 27607 | 919 785 3434

© 2023. Avison Young - Raleigh-Durham. Information contained herein was obtained from sources deemed reliable and, while thought to be correct, have not been verified. Avison Young - Raleigh-Durham does not guarantee the accuracy or completeness of the information presented, nor assumes any responsibility or liability for any errors or omissions therein.