

# Park Fletcher Building 6

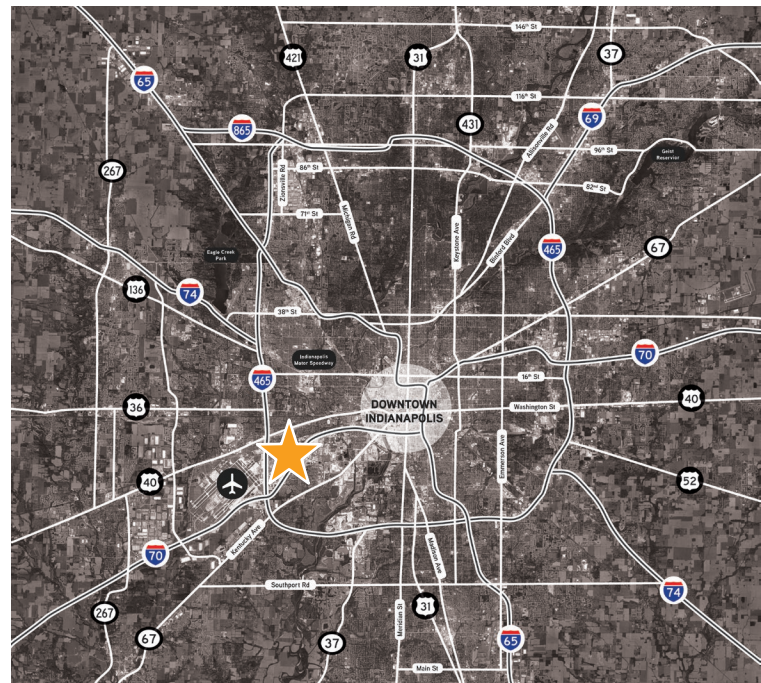
5522 – 5538 W Raymond Street, Indianapolis, IN

**FOR LEASE | INDUSTRIAL/OFFICE**



## PROPERTY HIGHLIGHTS

- 36,180 total SF building
- 12' clear height
- Dock and drive-in loading
- Zoned I-3-S
- New roof, facade and asphalt repaired/striped in 2016
- New landscaping in 2016
- Located in popular Park Fletcher Business Park
- Convenient interstate access to I-465 & I-70
- Close proximity to Downtown Indianapolis and Indianapolis International Airport
- IndyGo service coming to Park Fletcher – buses will run through the park every 30 minutes



**TYLER WILSON SIOR**  
317.713.2137  
tyler.wilson@colliers.com

**SYDNEY GABRIEL**  
317.713.2122  
sydney.gabriel@colliers.com

leasing by:



owned by:



## FLOOR PLANS + SPECS

### SUITE 5522

Office SF: 1,087

Warehouse SF: 2,513

---

TOTAL SF: 3,600

### SUITE SPECS

- 12' clear height
- (1) 8' x 10' dock door
- (1) 10' x 10' drive-in door
- 3 private offices
- Large open entry
- Dual office restrooms

## CONTACT US

### TYLER WILSON SIOR

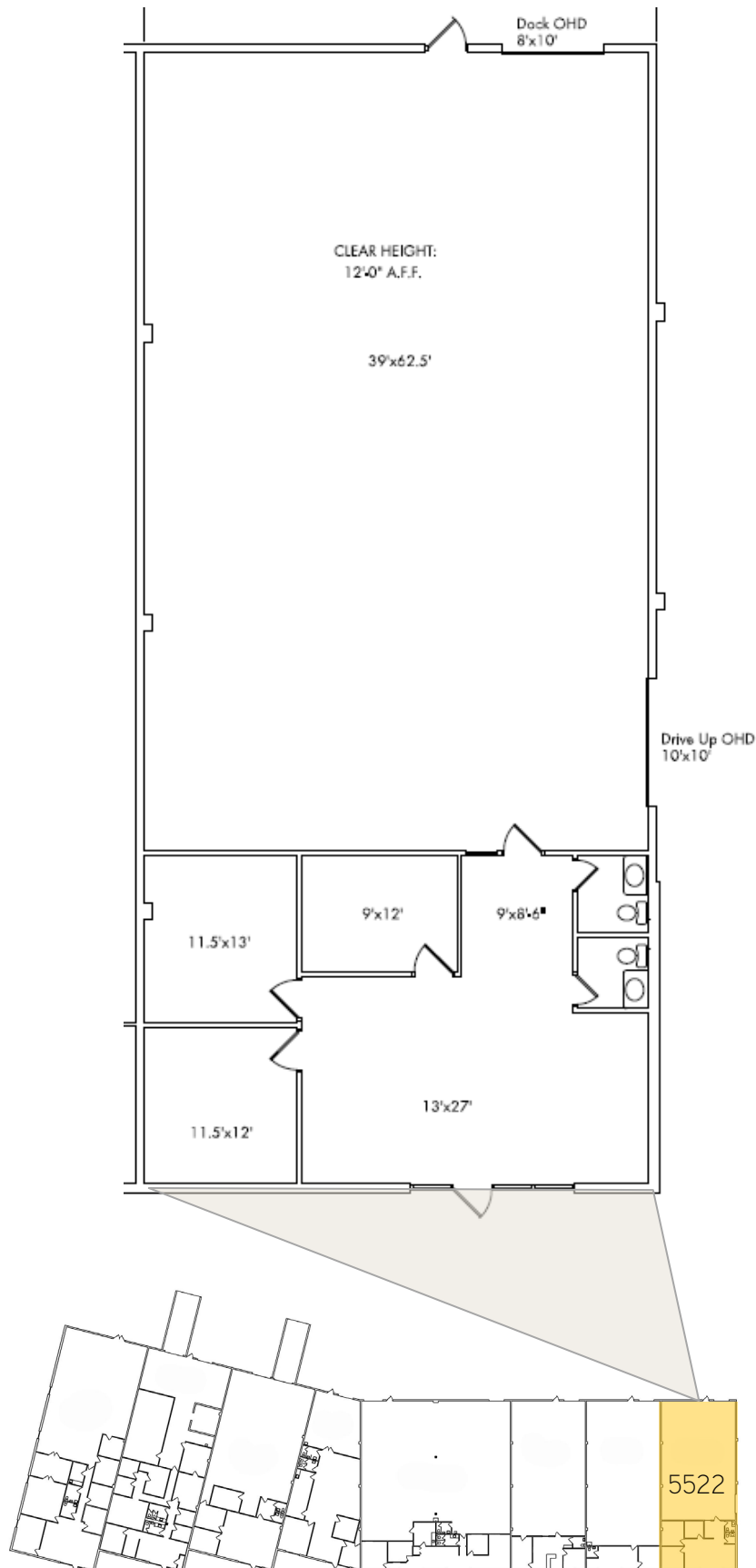
317.713.2137

tyler.wilson@colliers.com

### SYDNEY GABRIEL

317.713.2122

sydney.gabriel@colliers.com



= SUBJECT SUITE