



JOHN STANLEY  
&  
ASSOCIATES

COMMERCIAL REAL ESTATE



**HALCYON POINTE - Building I**  
**7515 Halcyon Summit Drive**  
**Montgomery, AL 36117**

**FOR LEASE**

- **± 29,517 RSF (ALL OR PART)**

- Suite 100: ± 4,571 RSF
- Suite 101: ± 4,801 RSF
- Suite 102: ± 5,235 RSF
- Suite 103: ± 4,745 RSF
- Suite 107: ± 1,265 RSF
- Suite 303: ± 3,464 RSF
- Suite 305: ± 4,565 RSF
- Suite 307: ± 871 RSF

- **\$21/RSF (FULL SERVICE RATE)**
- **LEASE TERM: THREE (3) YEAR MINIMUM**
- **TENANT IMPROVEMENTS: NEGOTIABLE**
- **OCCUPANCY: IMMEDIATE**

Halcyon Pointe, Building I, a class “A” Office Building is developed on a wooded 15.5 acres site, with convenient access to Taylor Road & I-85 (Exit 9), Montgomery, AL. Current tenants include Home Builders Association of Alabama, Morgan Stanley Smith Barney, and Caliber Home Loans, Inc. Contact John Stanley, CCIM, for more information at (334) 271-2475. Shown by appointment only.



**John C. Stanley, CCIM**  
John Stanley & Associates, Inc.  
4747 Woodmere Boulevard  
Montgomery, AL 36106  
(334) 271-2475 voice  
(334) 271-2421 fax  
[jstanley@johnstanleyassociates.com](mailto:jstanley@johnstanleyassociates.com)  
[www.johnstanleyassociates.com](http://www.johnstanleyassociates.com)



All information is from sources deemed reliable, but no warranty is made as to the accuracy thereof and same is submitted subject to errors, omissions, change of price, or other conditions, such as prior sales or withdrawal without notice by John Stanley & Associates, Inc. or the Owner.



# HALCYON POINTE I

## TENANT SPACE 100

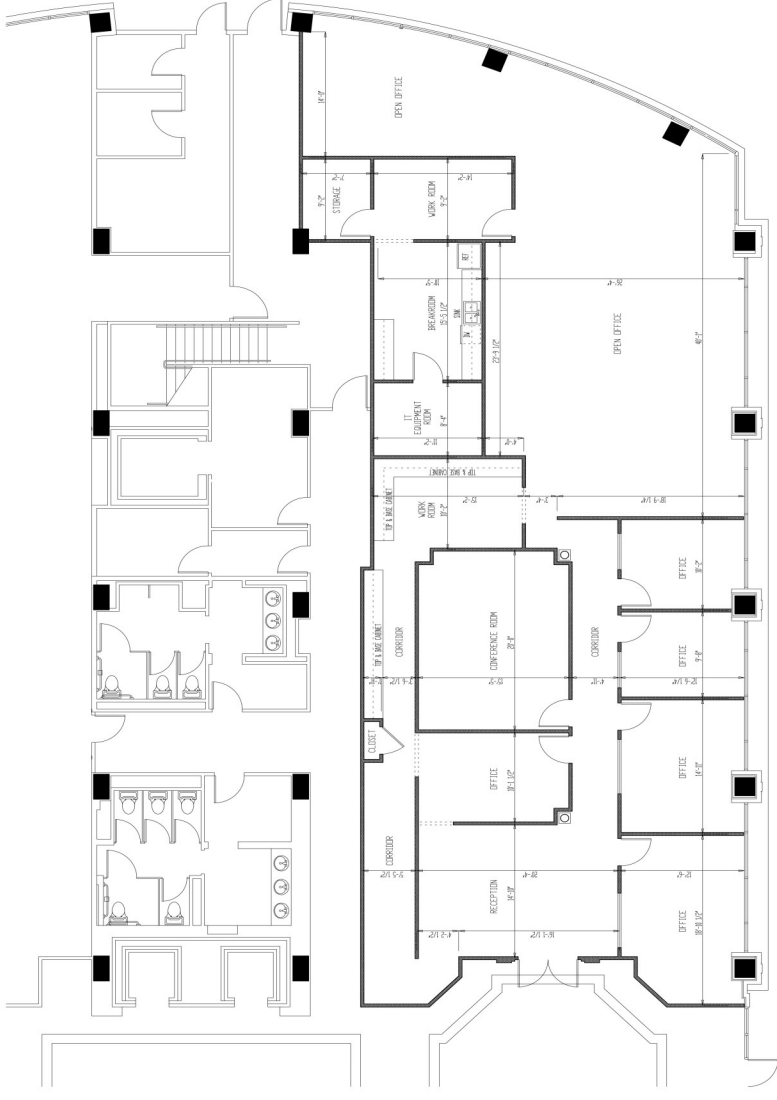
7515 HALCYON ALPACAMA DRIVE  
MONTGOMERY ALABAMA 36117

SHEET TITLE  
SUITE 100 LEASE PLAN

PROJECT NUMBER HALC  
FILE NUMBER AB  
DATE MAY 09, 2006  
REVISION:

REVISIONS NOT SHOWN  
TO BE A SPECIFICATION TO  
BE USED AS A GUIDE FOR  
CONSTRUCTION ONLY.

SHEET NUMBER  
L100

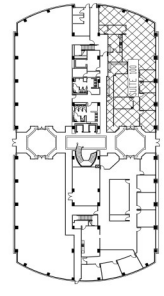


### SUITE 100 LEASE PLAN

SCALE: 3/16" = 1'-0"

USABLE SQUARE FOOTAGE: 3,962 SF

RENTABLE SQUARE FOOTAGE: 4,571 SF



KEY PLAN

# HALCYON POINTE I TENANT SPACE 101

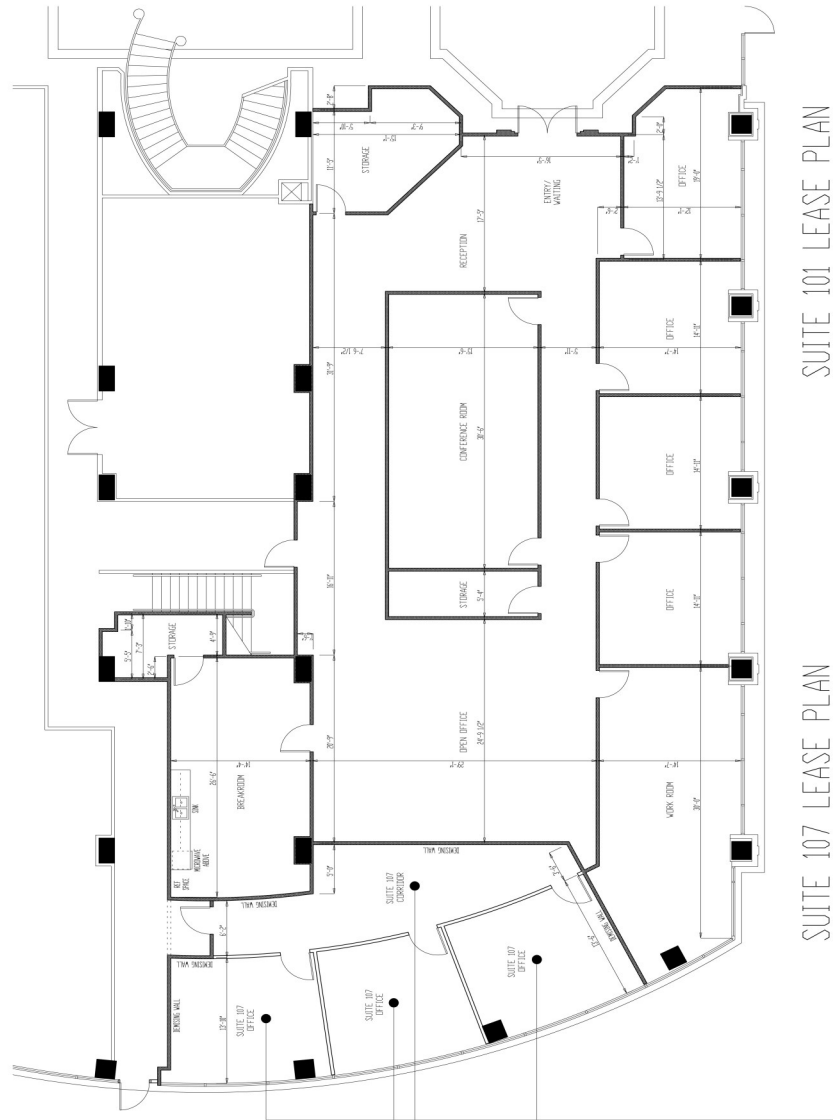
7515 HALCYON SUMMIT DRIVE  
MONTGOMERY ALABAMA 36117

SHEET TITLE  
302 CATOMA ANEX  
LOFT FLOOR PLAN

PROJECT NUMBER: HALC  
FILE NUMBER: AI  
DATE: MAY 09 2006  
REVISION:

WORKS SHOWN  
TO BE A SPECIFICATION TO  
BE USED AS A GUIDE FOR  
CONSTRUCTION ONLY.

SHEET NUMBER  
L101

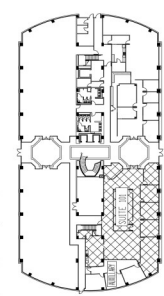


SUITE 101 LEASE PLAN

SCALE: 3/16" = 1'-0"  
USABLE SQUARE FOOTAGE: 4,162 SF  
RENTABLE SQUARE FOOTAGE: 4,801 SF

SUITE 107 LEASE PLAN

SCALE: 3/16" = 1'-0"  
USABLE SQUARE FOOTAGE: 1,096 SF  
RENTABLE SQUARE FOOTAGE: 1,265 SF



KEY PLAN

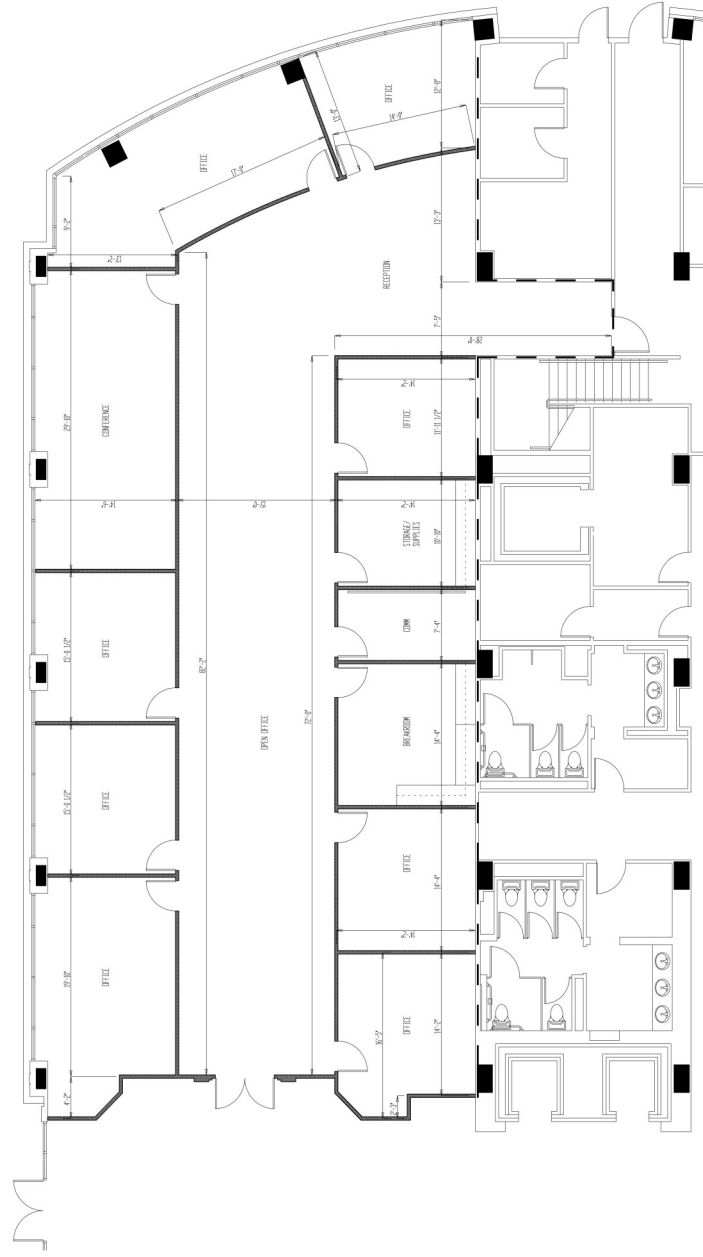
**HALCYON POINTE I**  
**TENANT SPACE 102**  
 7515 HALCYON ALABAMA DRIVE  
 MONTGOMERY ALABAMA 36117

SHEET TITLE  
 SUITE 102 LEASE PLAN

PROJECT NUMBER HALC3  
 FILE NUMBER A20  
 DATE JAN 25/2018  
 REVISION

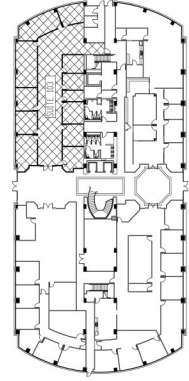
WORKSHEET NUMBERS  
 TO BE A SPECIFICATION, TO  
 BE USED AS A GUIDE FOR  
 CONSTRUCTION ONLY.

SHEET NUMBER  
**L102**

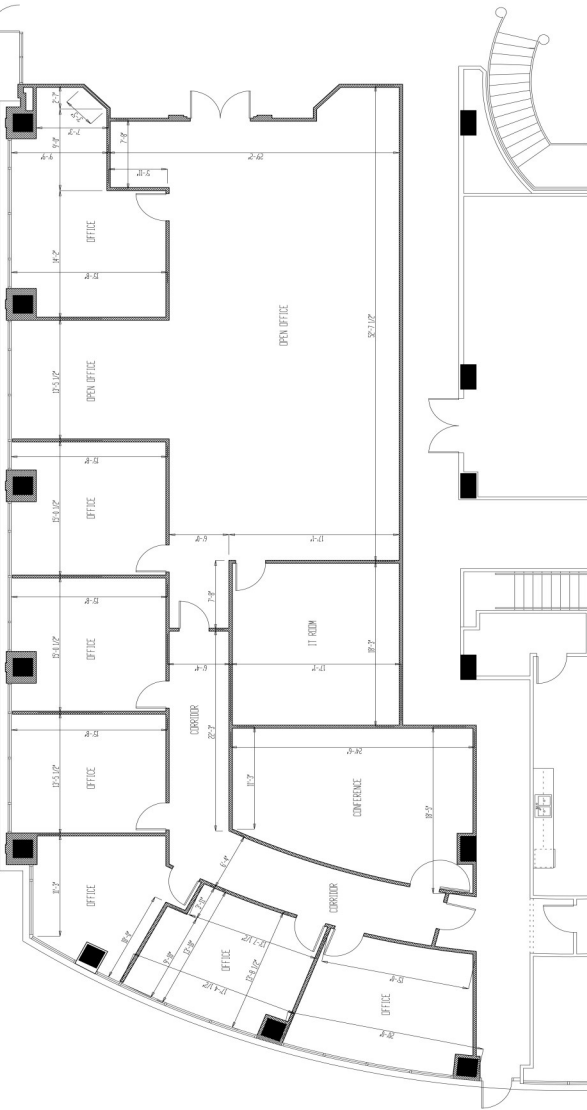


**SUITE 102 LEASE PLAN**  
 SCALE: 3/16" = 1'-0"

USABLE SQUARE FOOTAGE: 4,538 SF  
 RENTABLE SQUARE FOOTAGE: 5,235 SF

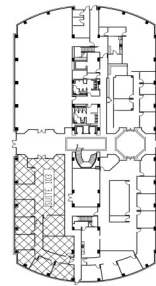


**KEY PLAN**



**SUITE 103 LEASE PLAN**

SCALE: 3/16" = 1'-0"  
 USABLE SQUARE FOOTAGE: 4,113 SF  
 RENTABLE SQUARE FOOTAGE: 4,745 SF



KEY PLAN

**HALCYON POINTE I  
 TENANT SPACE 103**

7515 HALCYON SUMMIT DRIVE  
 MONTGOMERY ALABAMA 36117

SHEET TITLE  
 SUITE 103 LEASE PLAN

PROJECT NUMBER: H4LC  
 FILE NUMBER: A03  
 DATE: MAY 12, 2006

REVISION:  
 DRAWING NOT INTENDED  
 TO BE A SPECIFICATION, TO  
 BE USED AS A GUIDE FOR  
 CONSTRUCTION ONLY.

SHEET NUMBER  
 L103

HALCYON POINTE I  
 TENANT SPACE 303  
 7515 HALCYON SUMMIT DRIVE  
 MONTGOMERY ALABAMA 36117

SHEET TITLE  
 SUITE 303 LEASE PLAN

PROJECT NUMBER: HALC  
 FILE NUMBER: 43  
 DATE: MAY 02, 2016  
 REVISION:

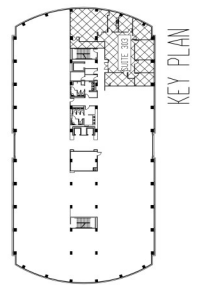
THIS DRAWING IS TO BE USED AS A GUIDE FOR CONSTRUCTION ONLY.

SHEET NUMBER  
 L303



SUITE 303 LEASE PLAN

SCALE: 3/16" = 1'-0"  
 USABLE SQUARE FOOTAGE: 3,006 SF  
 RENTABLE SQUARE FOOTAGE: 3,464 SF



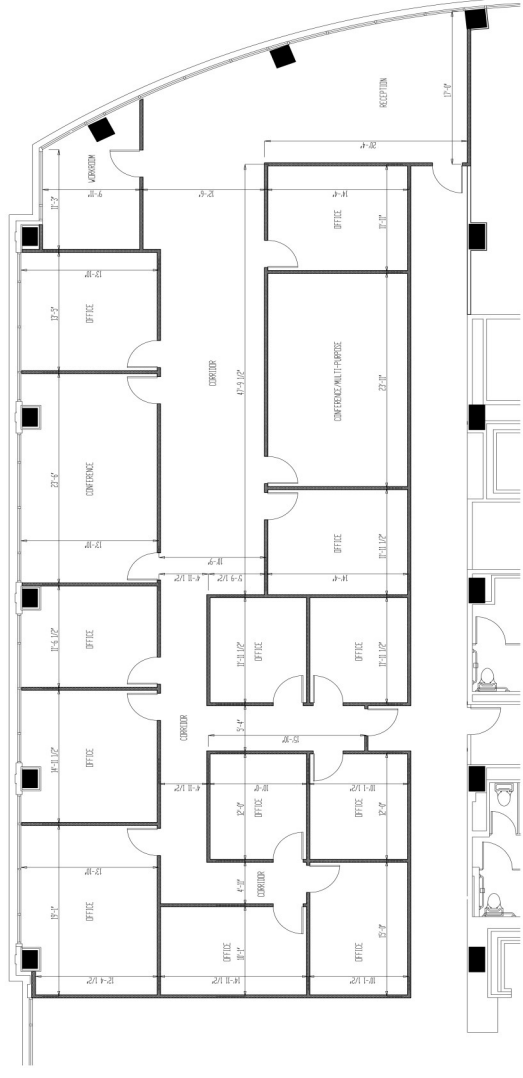
HALCYON POINTE I  
 TENANT SPACE 305  
 7015 MONTGOMERY ALCYON ALABAMA DRIVE  
 MONTGOMERY ALABAMA 36117

SHEET TITLE  
 SUITE 305 LEASE PLAN

PROJECT NUMBER: PHLC  
 FILE NUMBER: H305  
 DATE: SEPT 27, 2017  
 REVISION:

DRAWINGS NOT INTENDED  
 TO BE A SPECIFICATION TO  
 ANY CONTRACT FOR  
 CONSTRUCTION ONLY.

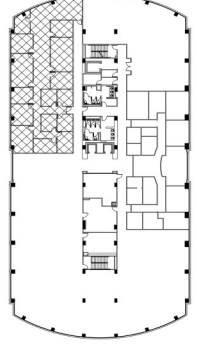
SHEET NUMBER  
 L305



SUITE 305 LEASE PLAN

SCALE: 3/16" = 1'-0"

RENTABLE SQUARE FOOTAGE: 4,565 SF



KEY PLAN

