



# Casselberry Collection

## *Property Description*

Casselberry Collection is a Publix Anchored neighborhood center in a thriving luxury community in Seminole County. Conveniently located just minutes from one of the most traveled intersections in Florida recording 53,000± motorists daily.



Ample parking



Bustling Plaza



Excellent Visibility

**For further  
information**

**Lisa Bailey, SIOR**  
Principal  
+1 407 440 6645  
lisa.bailey@avisonyoung.com

avisonyoung.com



## Offering Summary

Building Size:	89,186± SF
Available SF:	890± SF, 2,303± SF, 5,800± SF
Lot Size:	9.03± Acres
Zoning:	CG-City of Casselberry
Market:	Orlando
Submarket:	Casselberry

## Property Highlights

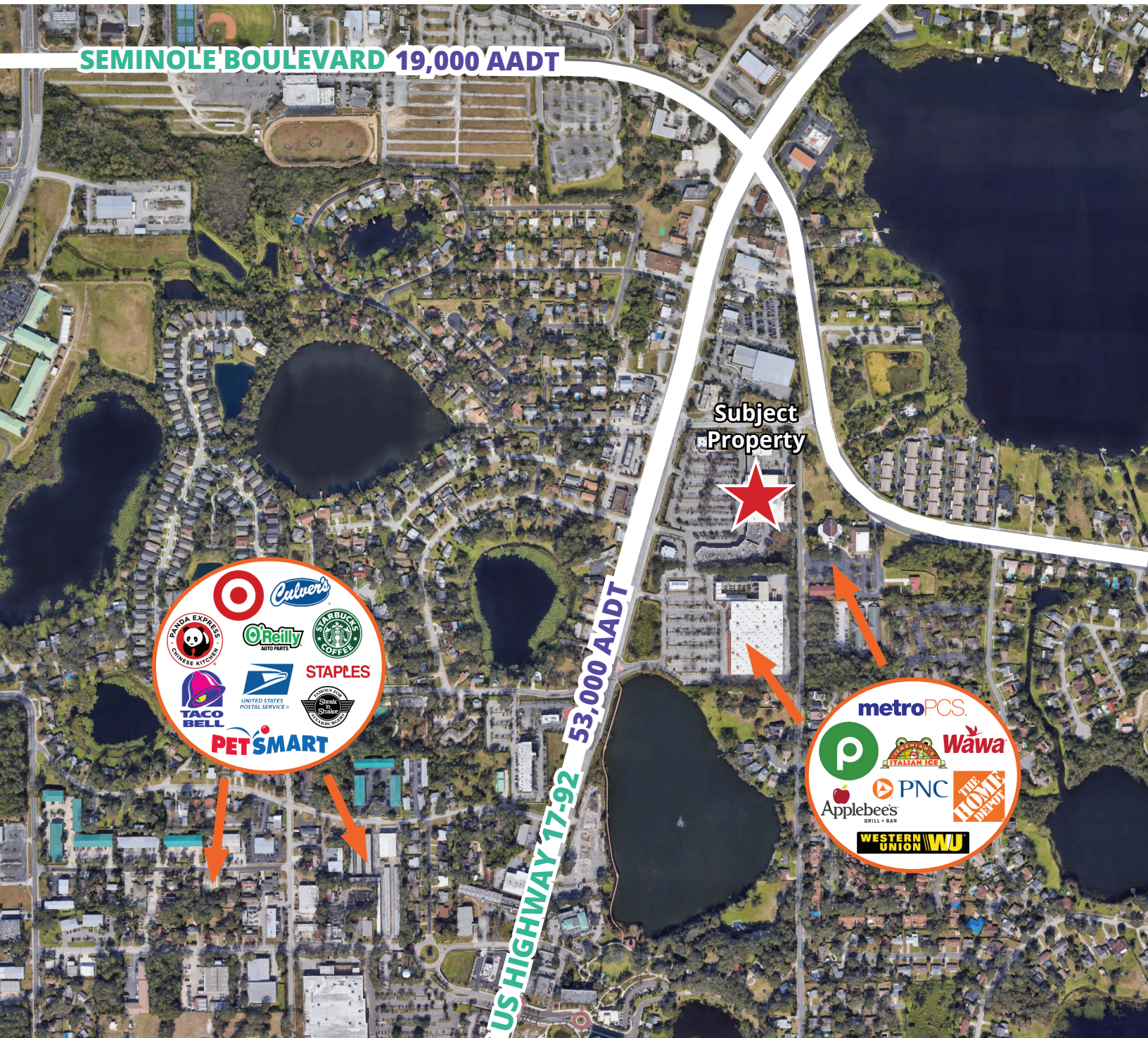
- Join Publix, Rent-A-Center, Hair Cuttery, and Coast Dental
- Offers maximum exposure on US Highway 17-92, one of the most traveled roads in Florida with over 53,000 cars per day
- Located in a densely populated area, boasting a 3 mile radius population of 88,584
- Excellent visibility and traffic at this prominent shopping center
- Estimated Operating Expenses: \$7.69 PSF

**For further  
information**

**Lisa Bailey, SIOR**  
Principal  
+1 407 440 6645  
lisa.bailey@avisonyoung.com

avisonyoung.com

**Location Map – Casselberry Collection**



**For further  
information**

**Lisa Bailey, SIOR**  
Principal  
+1 407 440 6645  
lisa.bailey@avisonyoung.com

**AVISON  
YOUNG**

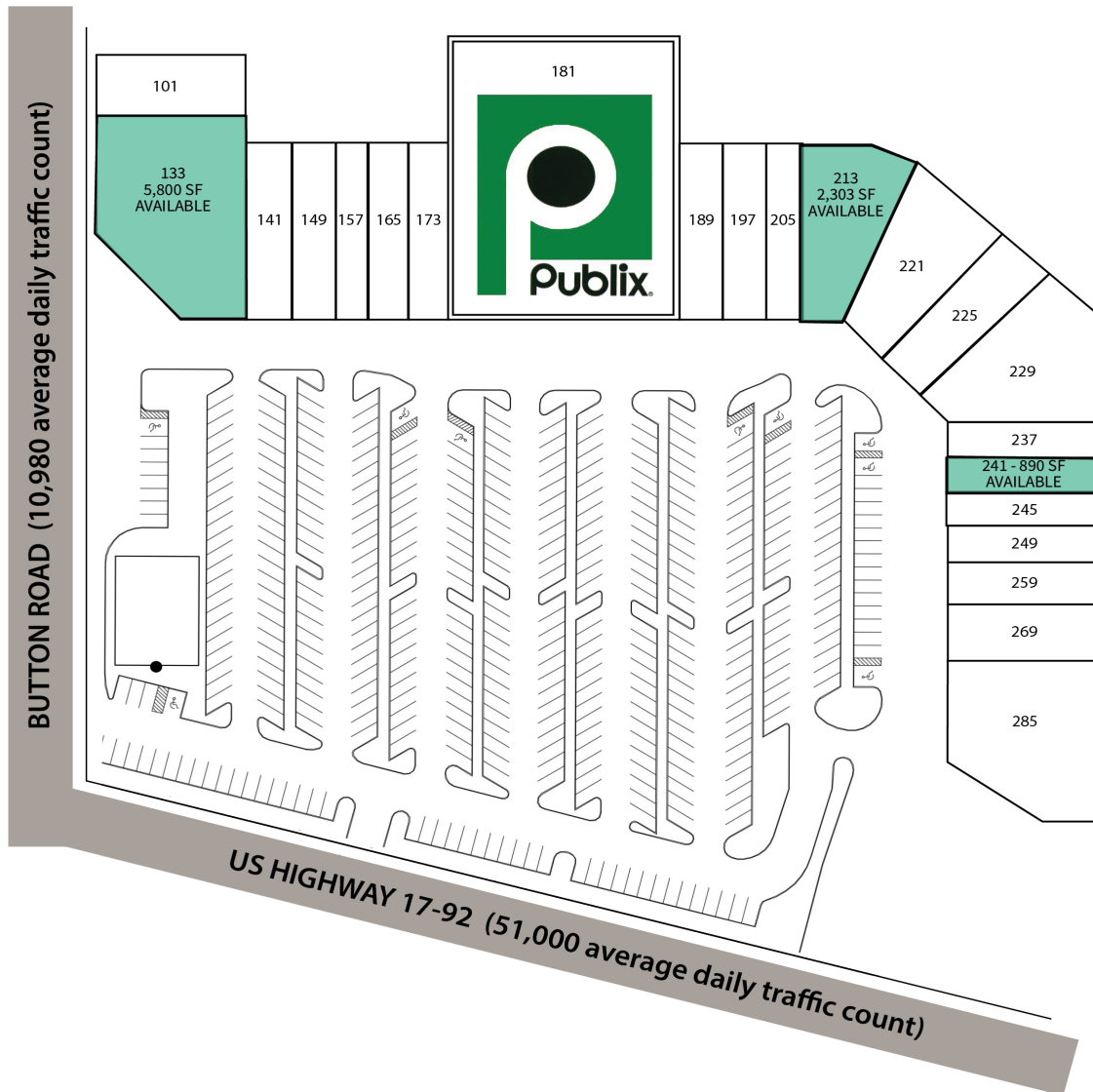
**Casselberry Collection  
Retail Property For Lease**  
3385 S. US Highway 17-92  
Casselberry, Florida 32707



**For further  
information**

**Lisa Bailey, SIOR**  
Principal  
+1 407 440 6645  
[lisa.bailey@avisonyoung.com](mailto:lisa.bailey@avisonyoung.com)

[avisonyoung.com](http://avisonyoung.com)

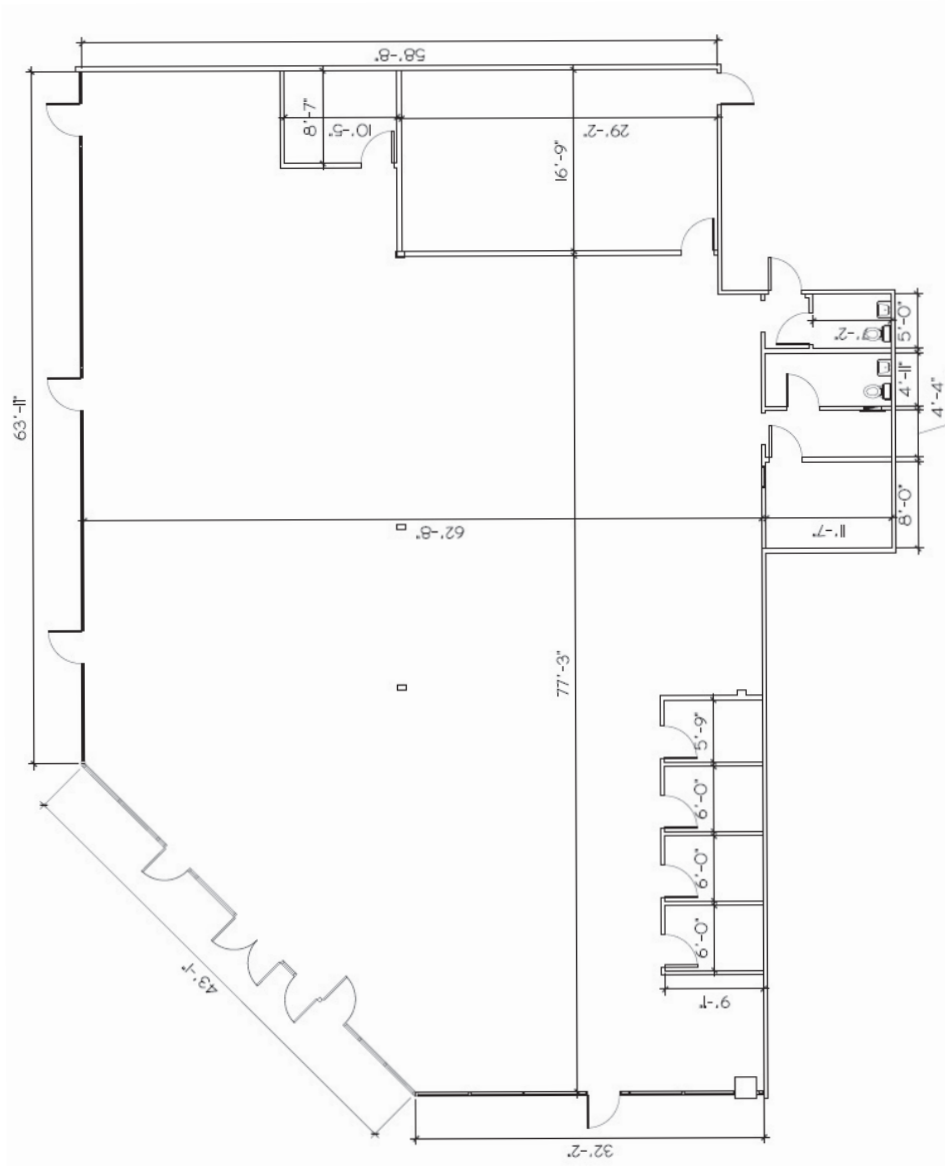


**For further  
information**

**Lisa Bailey, SIOR**  
Principal  
+1 407 440 6645  
lisa.bailey@avisonyoung.com

# Floor Plans

Suite 133 | End-Cap Space | 5,800± SF

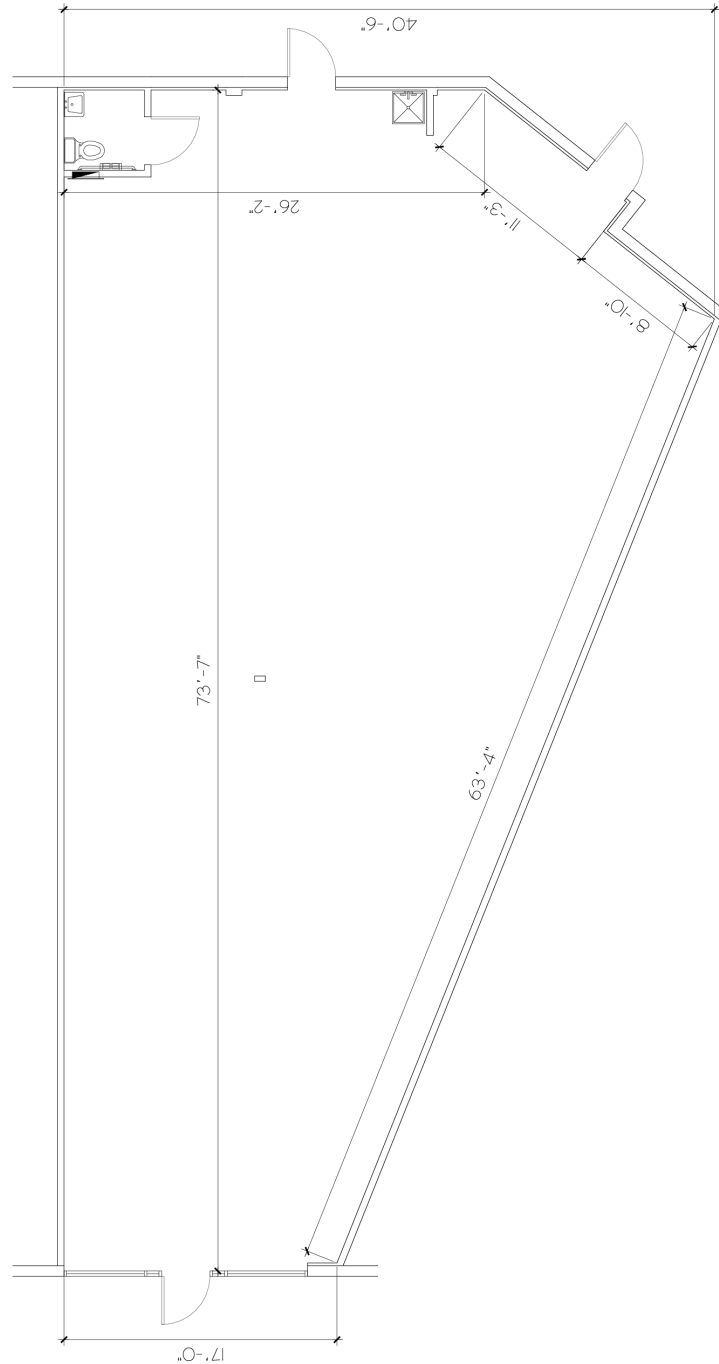


**For further  
information**

**Lisa Bailey, SIOR**  
Principal  
+1 407 440 6645  
lisa.bailey@avisonyoung.com

# Floor Plans

Suite 213 | 2,303± SF



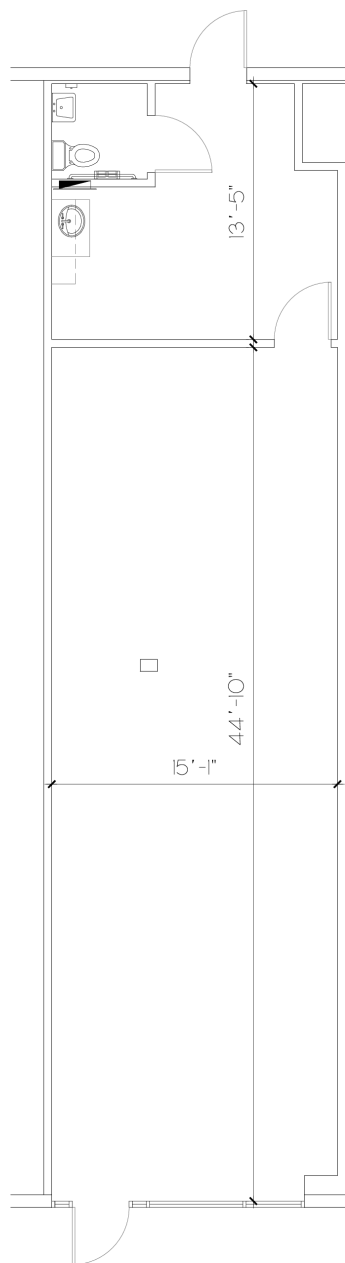
**For further  
information**

**Lisa Bailey, SIOR**  
Principal  
+1 407 440 6645  
lisa.bailey@avisonyoung.com

avisonyoung.com

# Floor Plans

Suite 241 | 890± SF  
Available 08/01/25



**For further  
information**

**Lisa Bailey, SIOR**  
Principal  
+1 407 440 6645  
lisa.bailey@avisonyoung.com