



GROUND MATRIX



FULL FLOOR
MEDICAL AND OFFICE
SPACE

FOR LEASE

at

665

CHESTNUT STREET

San Francisco, CA 94133



Presented By:

Jerry Adamson

707.570.7802

jerry@groundmatrix.com

CalDRE #01935945

665

FULL FLOOR OFFICES

CHESTNUT STREET

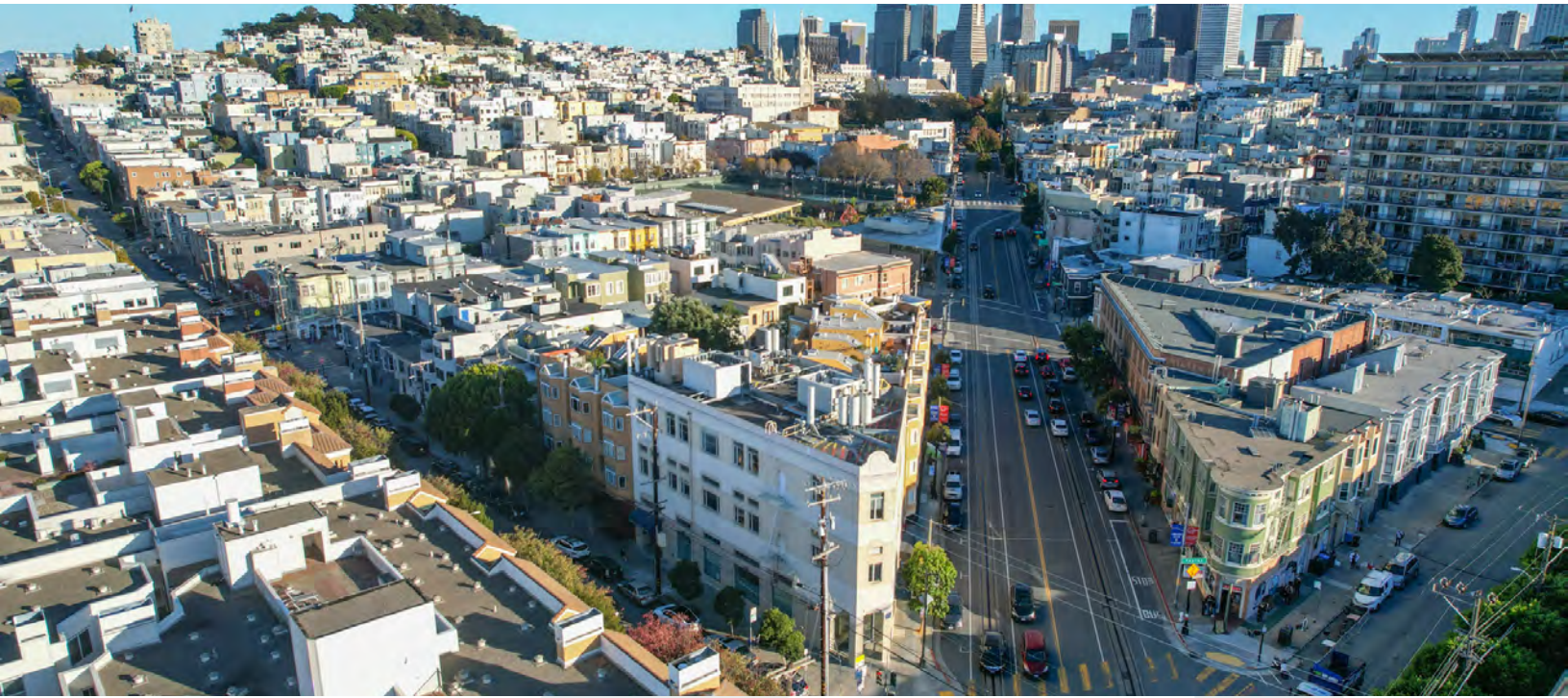
San Francisco, CA 94133



GROUND MATRIX

FOR LEASE | OFFICE & MEDICAL BUILDING

Property Summary



PROPERTY DESCRIPTION

665 Chestnut is offering a variety of office solutions to many business types. The 3rd Floor was built out one year ago for a law firm, but also works for other traditional professional service businesses. The 2nd Floor is perfect for users who prefer an open plan environment with break out meeting space. The 1st Floor is a high-end medical suite that is ready for occupancy.

LOCATION DESCRIPTION

665 Chestnut is conveniently located on a main corridor between the Financial District and the North Waterfront neighborhood. Our tenants enjoy the great amenities of the neighborhood, including many restaurants, bars and shops within walking distance. There are many parking garages nearby and street parking is readily available.

OFFERING SUMMARY

First Floor (Medical):	+/- 3,229 RSF
Second Floor (Office):	+/- 3,850 RSF
Third Floor (Office):	+/- 3,925 RSF
Rates:	Please Inquire
Term:	Please Inquire
Lease Type:	Industrial Gross
Occupancy:	Immediate

Jerry Adamson

707.570.7802
jerry@groundmatrix.com
CalDRE #01935945

665

FULL FLOOR OFFICES
CHESTNUT STREET
San Francisco, CA 94133



GROUND MATRIX

FOR LEASE | MEDICAL OFFICE SPACE

Ground Floor



LOCATION INFORMATION

Availability:	Direct
Size:	San Francisco, CA 94133
Rate:	Please inquire

SPACE HIGHLIGHTS:

- GROUND FLOOR MEDICAL SPACE ON CORNER OF PROMINENT INTERSECTION
- EXTERIOR SIGNAGE AVAILABLE TO STREET TRAFFIC
- HIGH-END MEDICAL BUILDOUT
- ABUNDANT NATURAL LIGHT
- TWO RESTROOMS
- FIVE (5) DOCTORS OFFICES
- ADMIN/TRIAGE ROOM
- THREE (3) EXAM ROOMS
- STAFF KITCHEN AND BREAK ROOM
- ONE (1) GLASS CONFERENCE ROOM
- STORAGE CLOSETS
- LARGE RECEPTION AND WAITING AREA

Jerry Adamson

707.570.7802
jerry@groundmatrix.com
CalDRE #01935945

665

FULL FLOOR OFFICES
CHESTNUT STREET
San Francisco, CA 94133



GROUND MATRIX

FOR LEASE | MEDICAL OFFICE SPACE

[Additional Photos](#)



Jerry Adamson

707.570.7802
jerry@groundmatrix.com
CalDRE #01935945

665

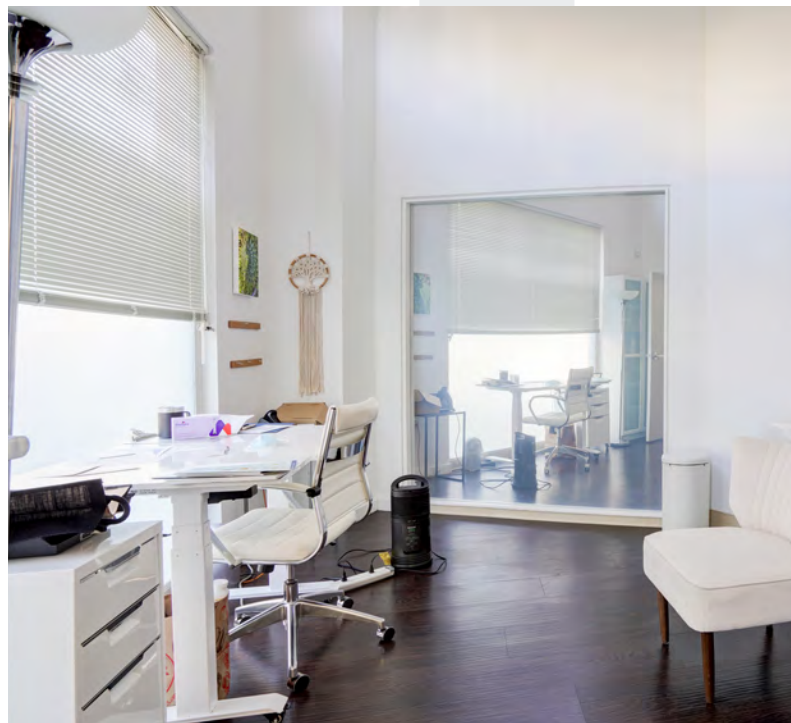
FULL FLOOR OFFICES
CHESTNUT STREET
San Francisco, CA 94133



GROUND MATRIX

FOR LEASE | MEDICAL OFFICE SPACE

Additional Photos



Jerry Adamson
707.570.7802
jerry@groundmatrix.com
CalDRE #01935945

665

FULL FLOOR OFFICES
CHESTNUT STREET
San Francisco, CA 94133



GROUND MATRIX

FOR LEASE | OFFICE BUILDING

Second Floor



SECOND FLOOR DETAILS

Availability:	Direct Lease
Size:	+/- 3,850 RSF
Rate:	Please Inquire

SPACE HIGHLIGHTS:

- FULL FLOOR OCCUPANCY
- DIRECT ACCESS FROM ELEVATOR
- OPEN PLAN OFFICE ENVIRONMENT
- HIGH CEILINGS
- GREAT WINDOW LINE
- OPERABLE WINDOWS
- FULL HVAC
- THREE (3) GLASS FRONT CONFERENCE ROOMS
- KITCHENETTE WITH SINK AND DISHWASHER
- TWO (2) RESTROOMS
- IT ROOM

Jerry Adamson

707.570.7802
jerry@groundmatrix.com
CalDRE #01935945

665

FULL FLOOR OFFICES
CHESTNUT STREET
San Francisco, CA 94133



GROUND MATRIX

FOR LEASE | OFFICE BUILDING

Second Floor Photos



Jerry Adamson

707.570.7802
jerry@groundmatrix.com
CalDRE #01935945

665

FULL FLOOR OFFICES
CHESTNUT STREET
San Francisco, CA 94133



GROUND MATRIX

FOR LEASE | OFFICE BUILDING

Third Floor

THIRD FLOOR DETAILS

Availability:	Direct Lease
Size:	+/- 3,924 RSF
Rate:	Please Inquire

SPACE HIGHLIGHTS:

- FULL TOP FLOOR OCCUPANCY
- DIRECT EXCLUSIVE ACCESS TO THE ROOF
- BRAND NEW BUILDOUT FOR LAW FIRM
- FOUR (4) LARGE PRIVATE OFFICES
- TWO (2) LARGE CONFERENCE ROOMS
- TWO (2) RESTROOMS, ONE (1) SHOWER
- LARGE OPEN KITCHEN SPACE
- RECEPTION AREA
- OPEN OFFICE ENVIRONMENT
- FURNITURE POTENTIALLY AVAILABLE
- STORAGE AND IT ROOM



Jerry Adamson

707.570.7802
jerry@groundmatrix.com
CalDRE #01935945

665

FULL FLOOR OFFICES
CHESTNUT STREET
San Francisco, CA 94133



GROUND MATRIX

FOR LEASE | OFFICE BUILDING

[Additional Photos](#)



Jerry Adamson

707.570.7802
jerry@groundmatrix.com
CalDRE #01935945

665

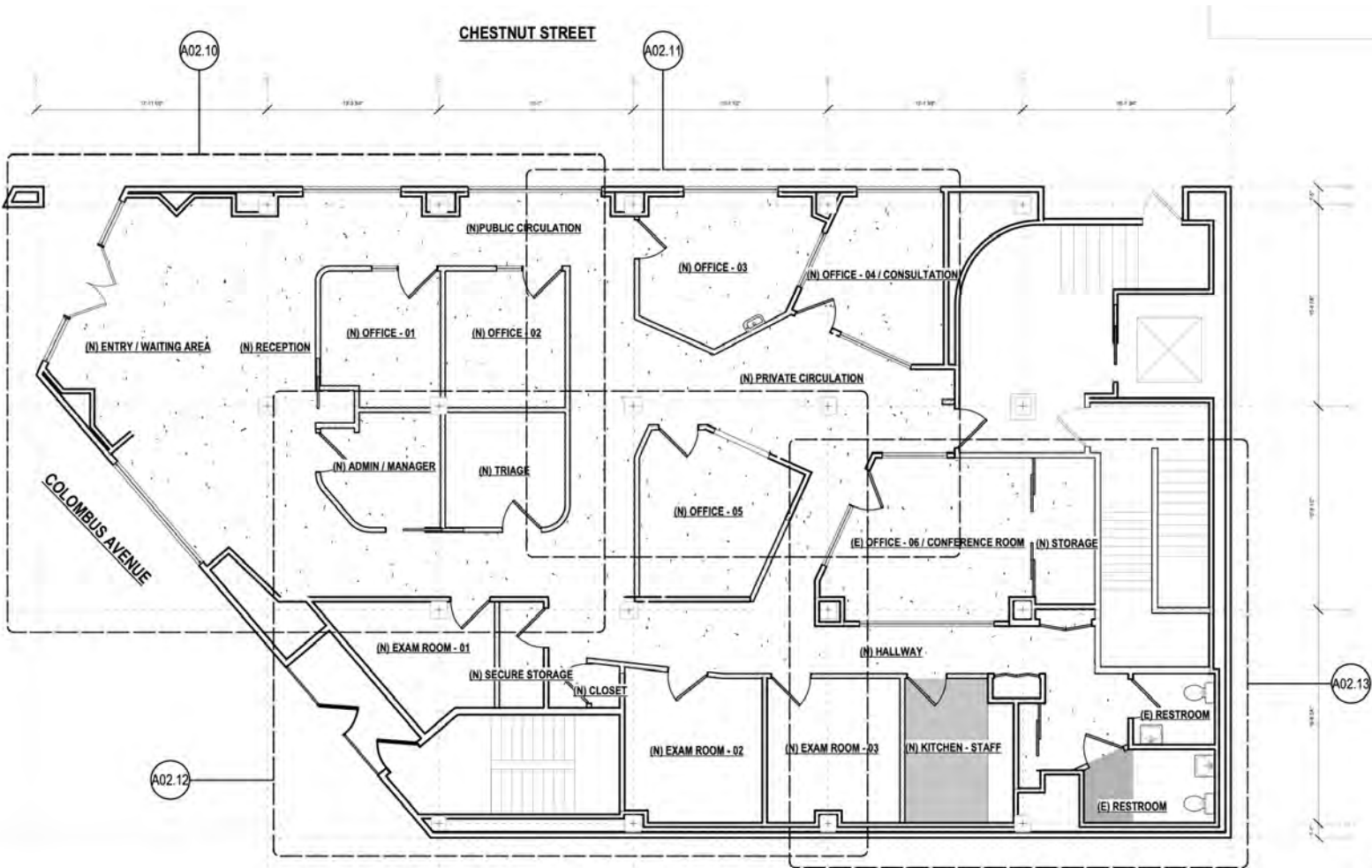
FULL FLOOR OFFICES
CHESTNUT STREET
San Francisco, CA 94133



GROUND MATRIX

FOR LEASE | MEDICAL SUITE

1st Floor Plans



Jerry Adamson

707.570.7802
jerry@groundmatrix.com
CalDRE #01935945

665

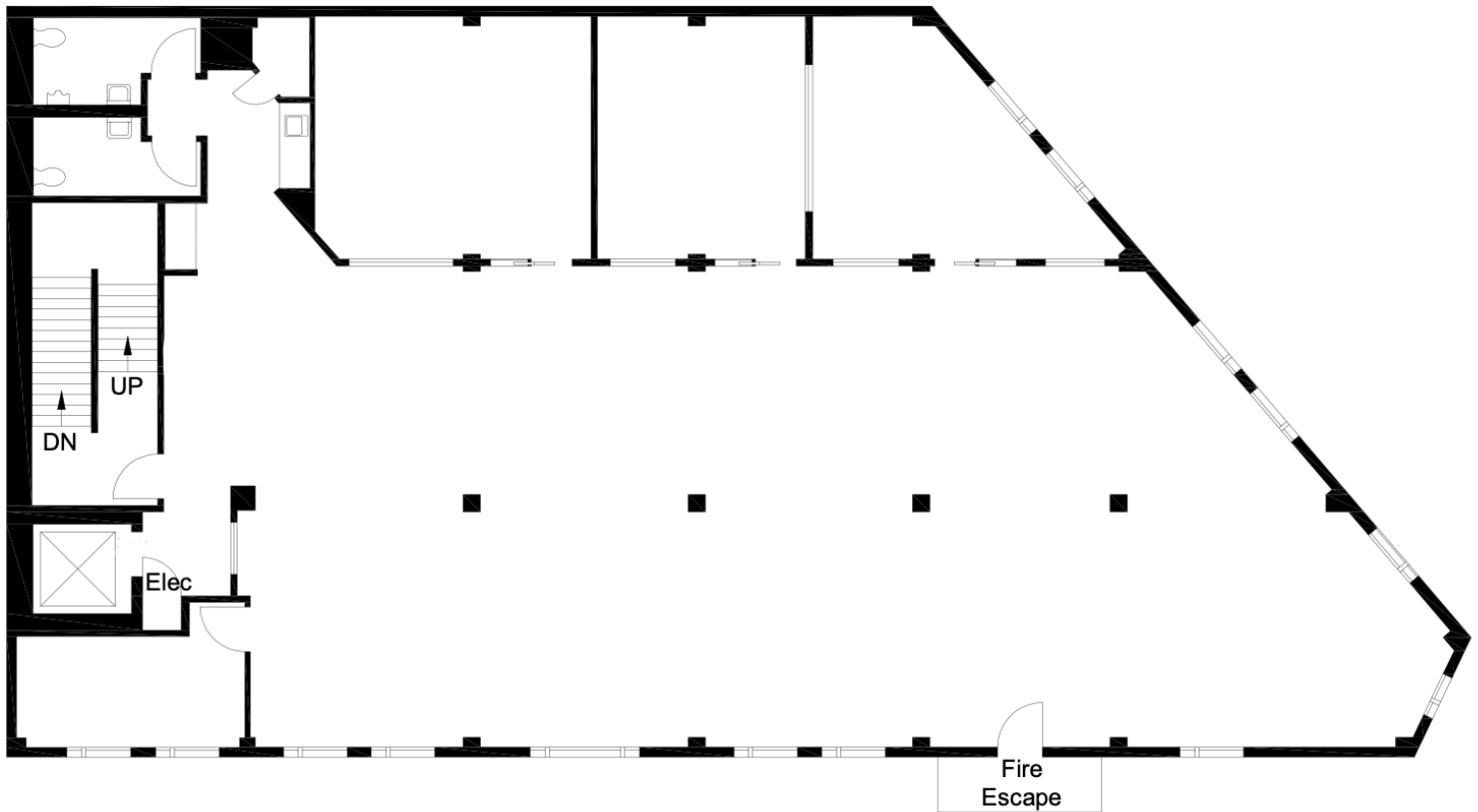
FULL FLOOR OFFICES
CHESTNUT STREET
San Francisco, CA 94133



GROUND MATRIX

FOR LEASE | OFFICE BUILDING

Second Floor Plans



Jerry Adamson
707.570.7802
jerry@groundmatrix.com
CalDRE #01935945

665

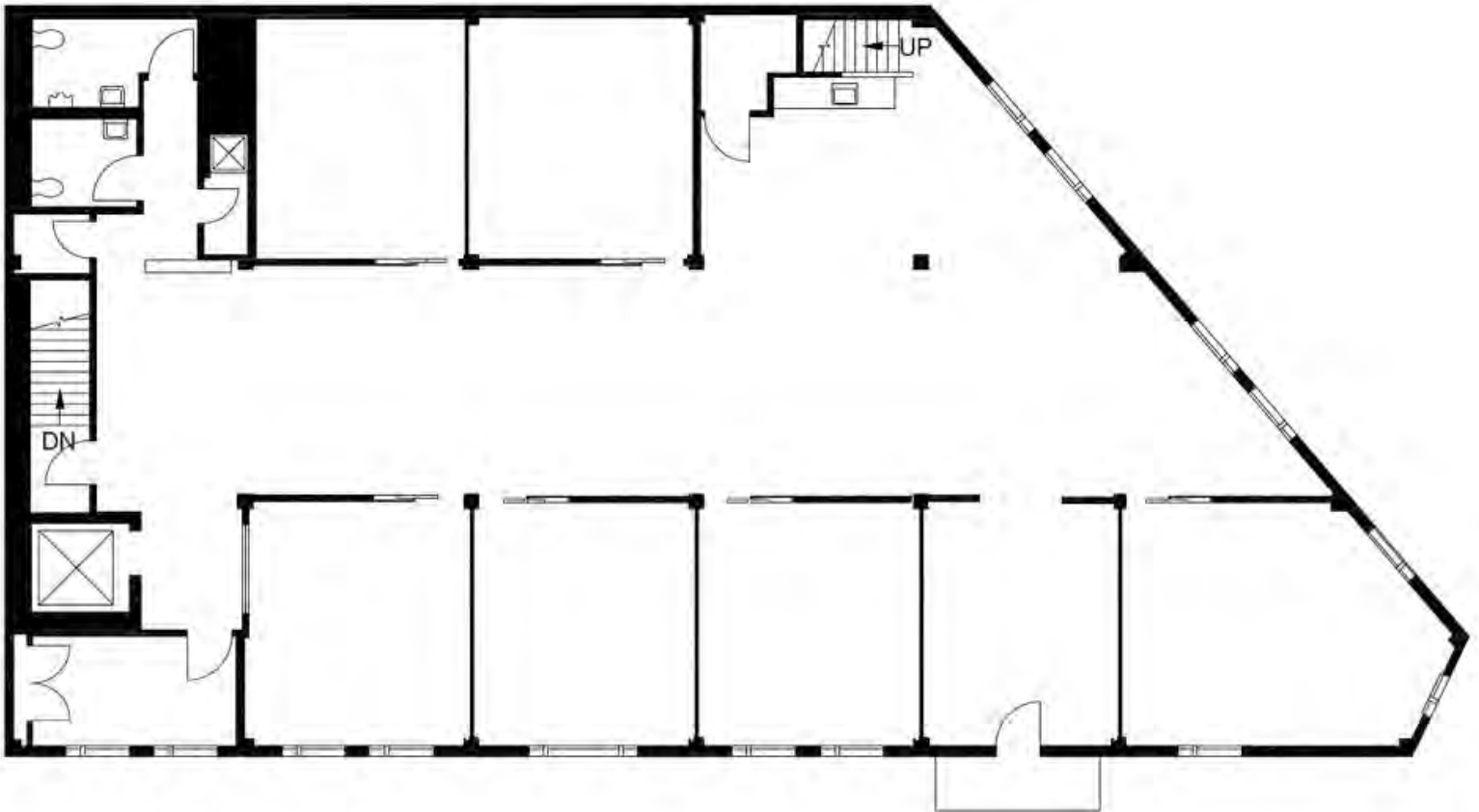
FULL FLOOR OFFICES
CHESTNUT STREET
San Francisco, CA 94133



GROUND MATRIX

FOR LEASE | OFFICE BUILDING

Third Floor Plans



Jerry Adamson
707.570.7802
jerry@groundmatrix.com
CalDRE #01935945

665

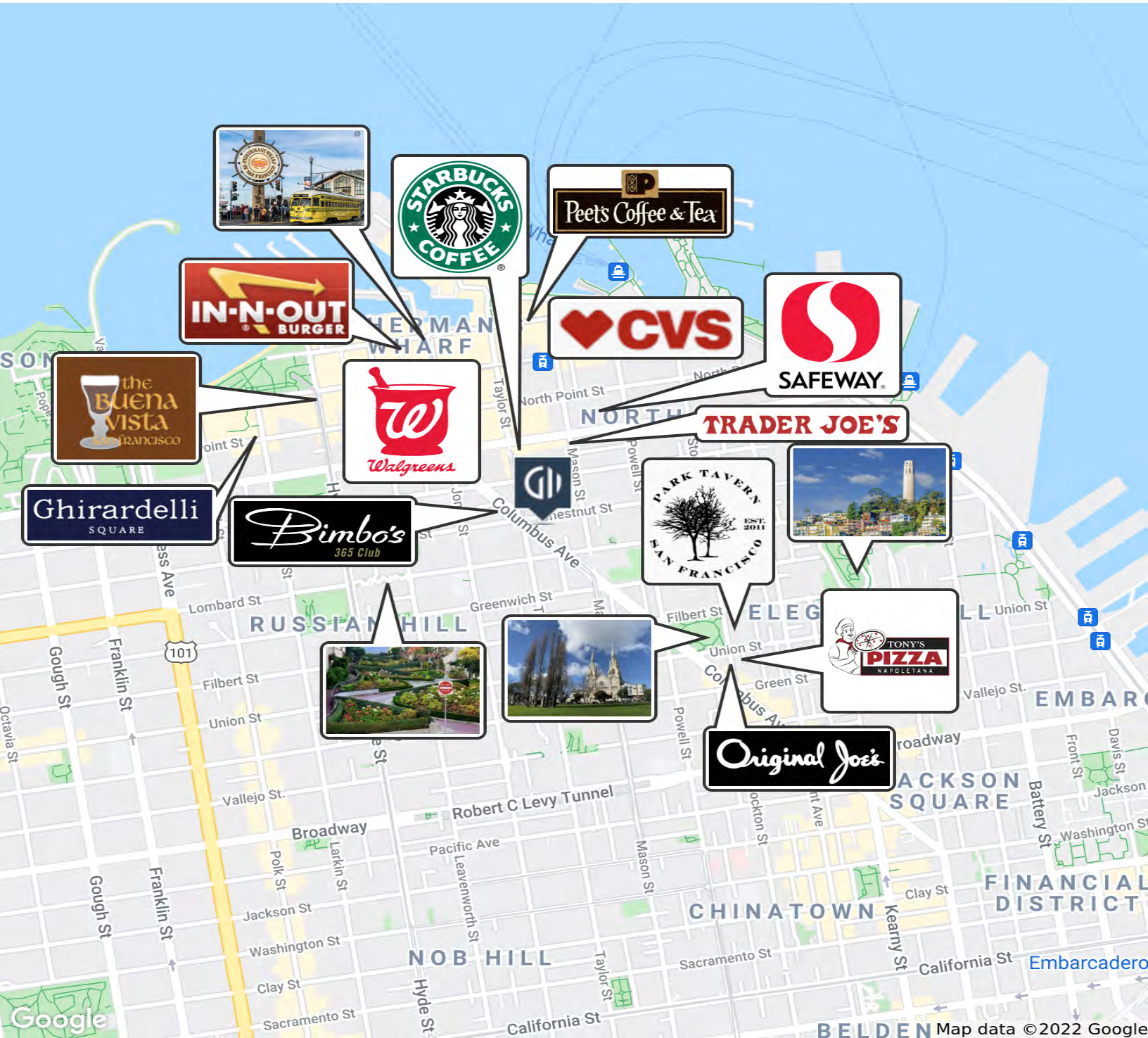
FULL FLOOR OFFICES
CHESTNUT STREET
San Francisco, CA 94133



GROUND MATRIX

FOR LEASE | OFFICE BUILDING

Location Maps



Jerry Adamson
707.570.7802
jerry@groundmatrix.com
CalDRE #01935945