



10,000 - 51,761 SF AVAILABLE

5335 Dividend Drive

SUITES A, B, C & D | DECATUR, GA 30035

OWNED BY:

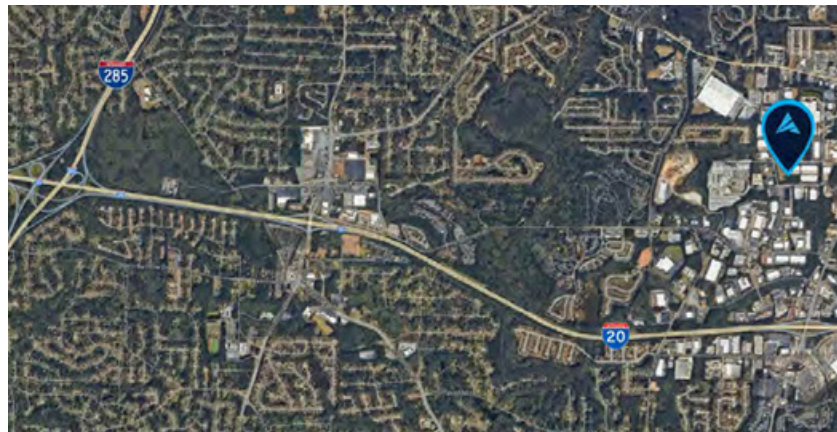
Dalfen
INDUSTRIAL

FOR SUBLEASE



PROPERTY INFORMATION

Total Size: 10,000 - 51,761 SF
Office: 5,700 SF
Warehouse: 46,051 SF
Term: Sublease through 7/31/2027
Loading: Fourteen (14) Dock High Doors
Three (3) Drive-In Doors
Clear Height: 26'
Location: +/- 1.2 miles to I - 20
+/- 4.8 miles to I - 285



APEX INDUSTRIAL
REAL ESTATE ADVISORS

3500 Lenox Road NE | Suite 1275 | Atlanta, GA 30326 | apexindustrialre.com

For more information,
please contact:

ANDY HEAD

Office: (404) 595 - 1466
Cell: (404) 713 - 4601
ahead@apexindustrialre.com

BRYCE MCCAIN

Office: (404) 595 - 1552
Cell: (770) 845 - 3559
bmccain@apexindustrialre.com

Although the information contained therein was provided from sources believed to be reliable, Apex Industrial makes no representation, expressed or implied, as to its accuracy and said information is subject to errors, omissions or changes.



10,000 - 51,761 SF AVAILABLE

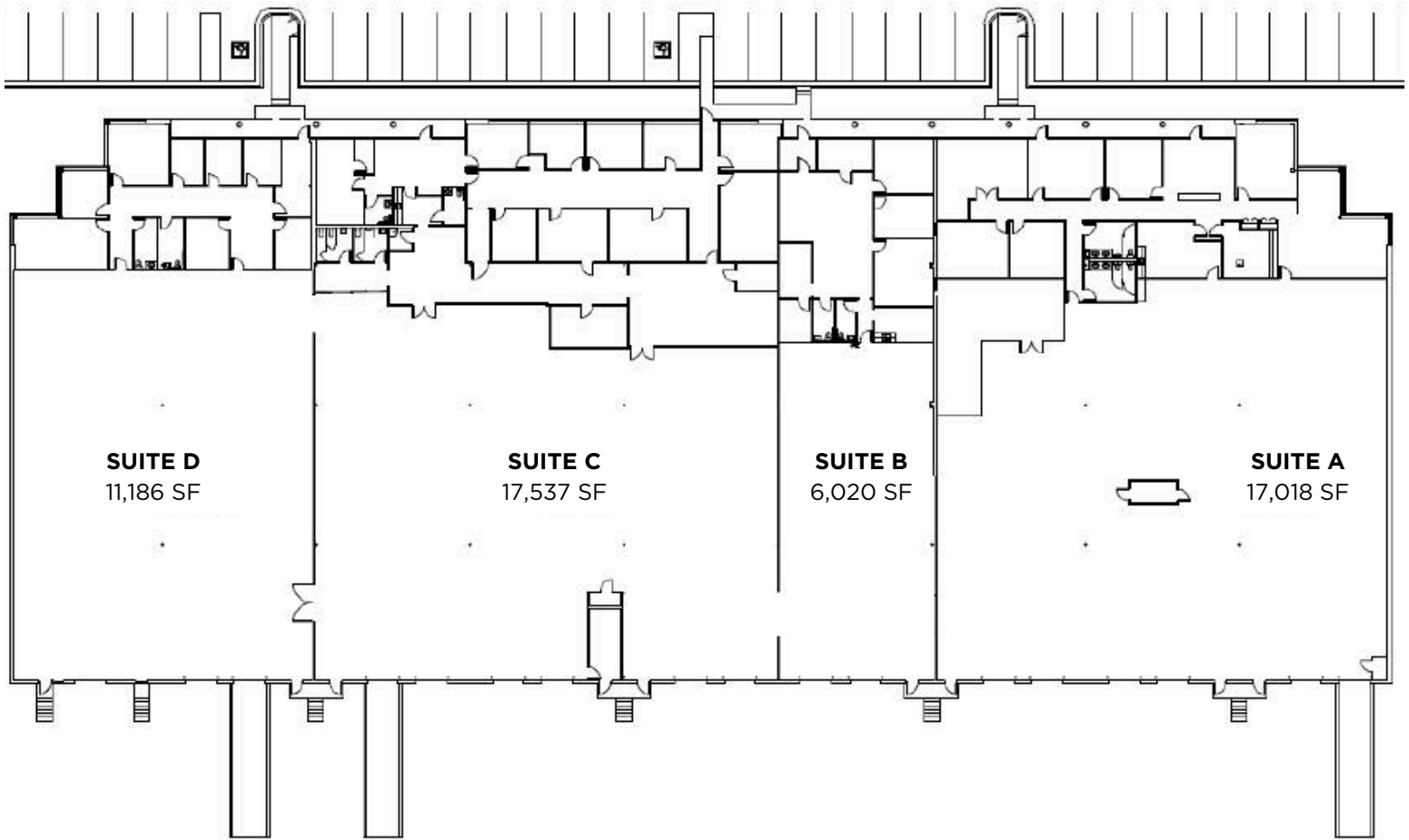
5335 Dividend Drive

SUITES A, B, C & D | DECATUR, GA 30035

OWNED BY:



FLOORPLAN



APEX INDUSTRIAL
REAL ESTATE ADVISORS

3500 Lenox Road NE | Suite 1275 | Atlanta, GA 30326 | apexindustrialre.com

For more information,
please contact:

ANDY HEAD

Office: (404) 595 - 1466
Cell: (404) 713 - 4601
ahead@apexindustrialre.com

BRYCE MCCAIN

Office: (404) 595 - 1552
Cell: (770) 845 - 3559
bmccain@apexindustrialre.com

Although the information contained therein was provided from sources believed to be reliable, Apex Industrial makes no representation, expressed or implied, as to its accuracy and said information is subject to errors, omissions or changes.



17,018 SF AVAILABLE

5335 Dividend Drive

SUITES A, B, C & D | DECATUR, GA 30035

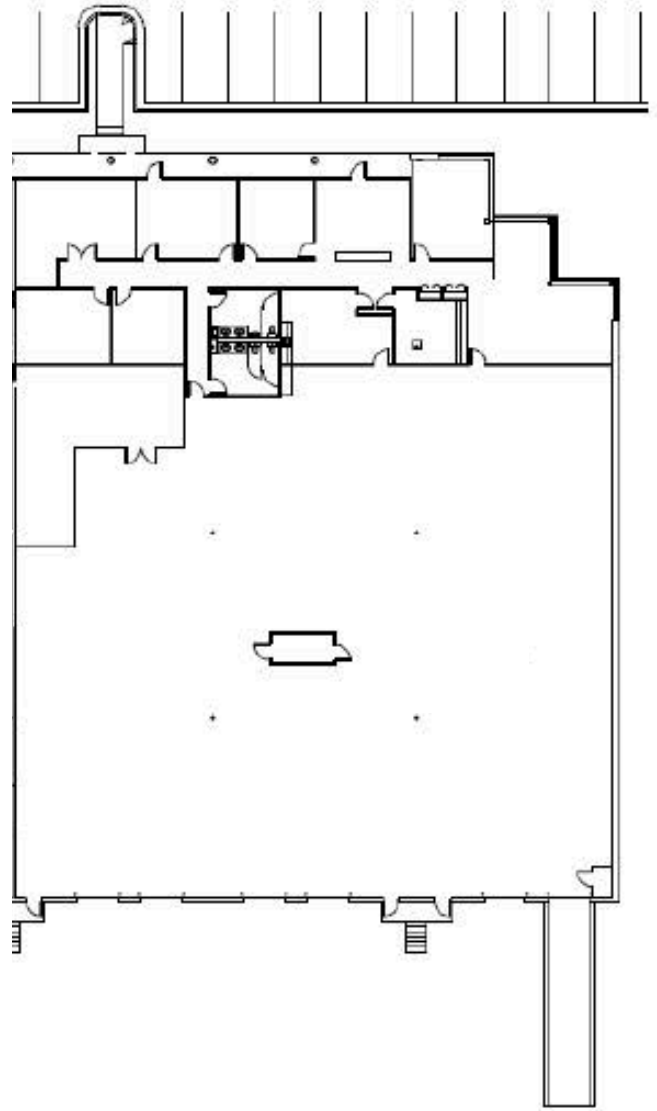
OWNED BY:



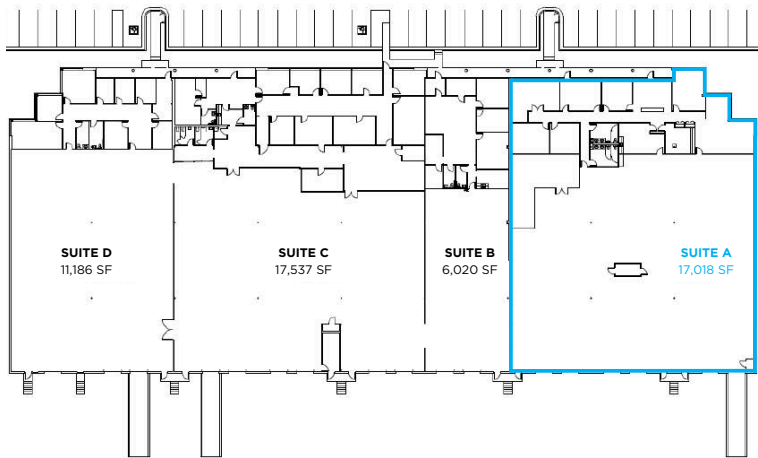
PROPERTY INFORMATION

Total Size: 17,018 SF
 Office: 2,000 SF
 Warehouse: 15,018 SF
 Term: Sublease through 7/31/2027
 Loading: Five (5) Dock High Doors
 One (1) Drive-In Door
 Clear Height: 26'
 Location: +/- 1.2 miles to I - 20
 +/- 4.8 miles to I - 285

FLOORPLAN



KEYPLAN



APEX INDUSTRIAL
REAL ESTATE ADVISORS

3500 Lenox Road NE | Suite 1275 | Atlanta, GA 30326 | apexindustrialre.com

For more information,
please contact:

ANDY HEAD

Office: (404) 595 - 1466
Cell: (404) 713 - 4601
ahead@apexindustrialre.com

BRYCE MCCAIN

Office: (404) 595 - 1552
Cell: (770) 845 - 3559
bmccain@apexindustrialre.com

Although the information contained therein was provided from sources believed to be reliable, Apex Industrial makes no representation, expressed or implied, as to its accuracy and said information is subject to errors, omissions or changes.



6,020 SF AVAILABLE

5335 Dividend Drive

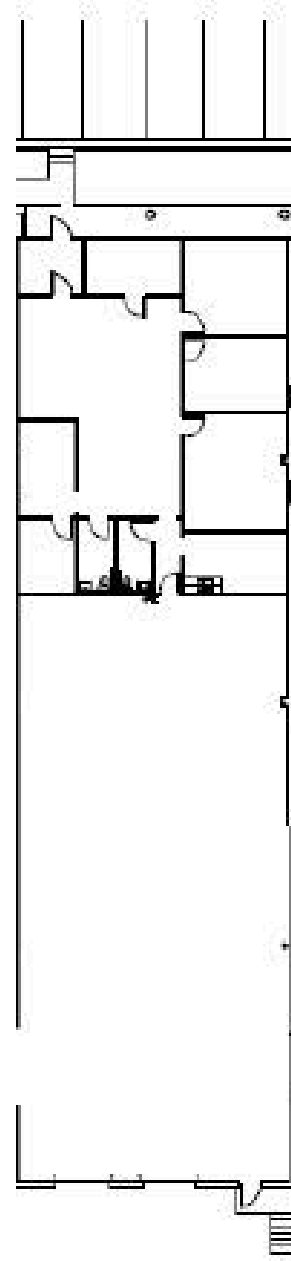
SUITES A, B, C & D | DECATUR, GA 30035

OWNED BY:

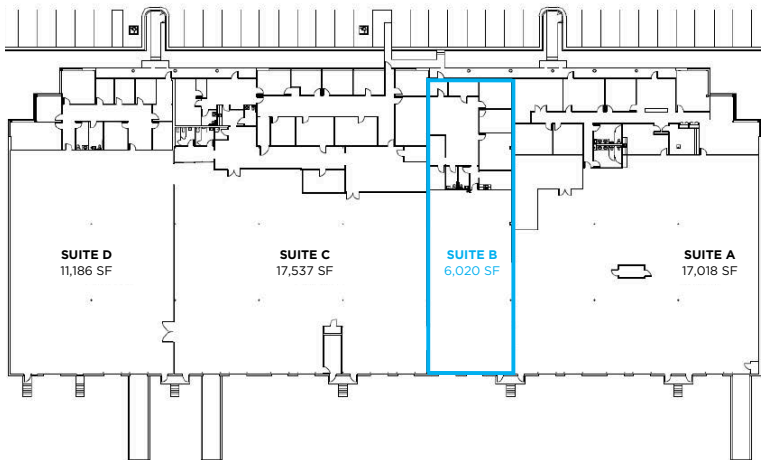


PROPERTY INFORMATION

- Total Size: 6,020 SF
- Office: 1,000 SF
- Warehouse: 5,020 SF
- Term: Sublease through 7/31/2027
- Loading: Two (2) Dock High Doors
- Clear Height: 26'
- Location: +/- 1.2 miles to I - 20
+/- 4.8 miles to I - 285



KEYPLAN



APEX INDUSTRIAL
REAL ESTATE ADVISORS

3500 Lenox Road NE | Suite 1275 | Atlanta, GA 30326 | apexindustrialre.com

For more information,
please contact:

ANDY HEAD

Office: (404) 595 - 1466
Cell: (404) 713 - 4601
ahead@apexindustrialre.com

BRYCE MCCAIN

Office: (404) 595 - 1552
Cell: (770) 845 - 3559
bmccain@apexindustrialre.com

Although the information contained therein was provided from sources believed to be reliable, Apex Industrial makes no representation, expressed or implied, as to its accuracy and said information is subject to errors, omissions or changes.



17,537 SF AVAILABLE

5335 Dividend Drive

SUITES A, B, C & D | DECATUR, GA 30035

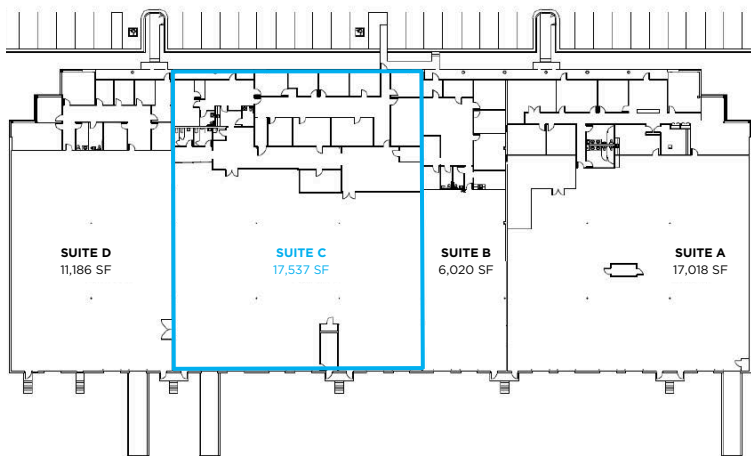
OWNED BY:



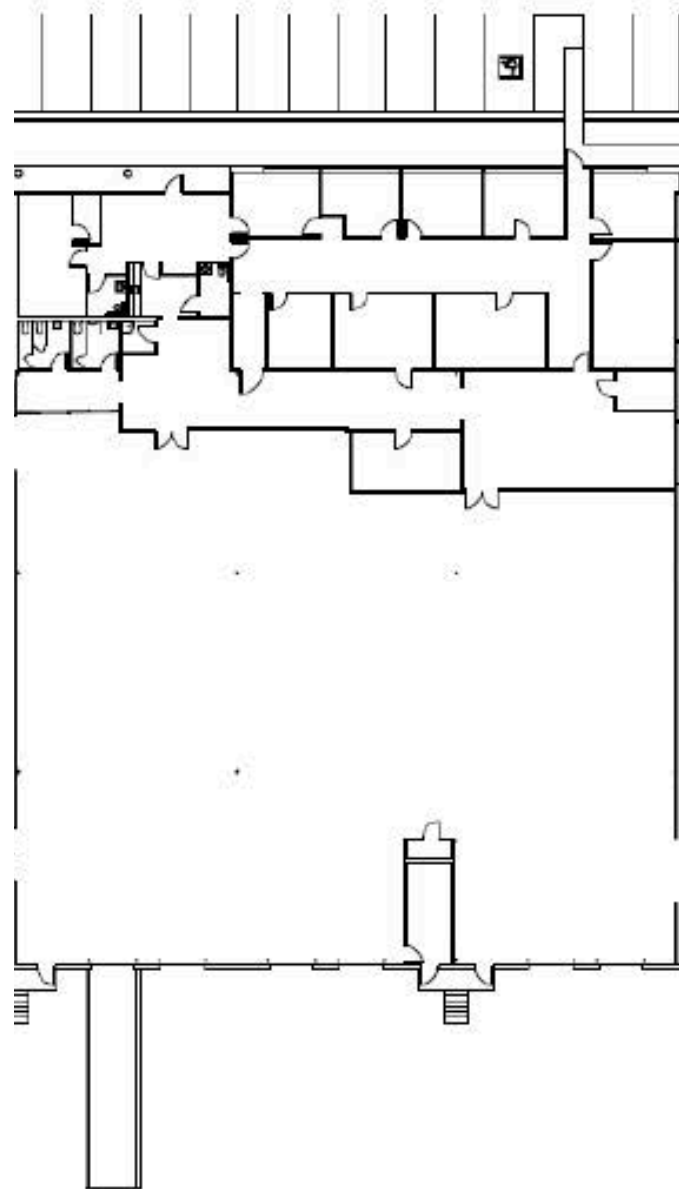
PROPERTY INFORMATION

Total Size: 17,537 SF
Office: 1,700 SF
Warehouse: 15,837 SF
Term: Sublease through 7/31/2027
Loading: Five (5) Dock High Doors
One (1) Drive-In Door
Clear Height: 26'
Location: +/- 1.2 miles to I - 20
+/- 4.8 miles to I - 285

KEYPLAN



FLOORPLAN



APEX INDUSTRIAL
REAL ESTATE ADVISORS

3500 Lenox Road NE | Suite 1275 | Atlanta, GA 30326 | apexindustrialre.com

For more information,
please contact:

ANDY HEAD

Office: (404) 595 - 1466
Cell: (404) 713 - 4601
ahead@apexindustrialre.com

BRYCE MCCAIN

Office: (404) 595 - 1552
Cell: (770) 845 - 3559
bmccain@apexindustrialre.com

Although the information contained therein was provided from sources believed to be reliable, Apex Industrial makes no representation, expressed or implied, as to its accuracy and said information is subject to errors, omissions or changes.



11,186 SF AVAILABLE

5335 Dividend Drive

SUITES A, B, C & D | DECATUR, GA 30035

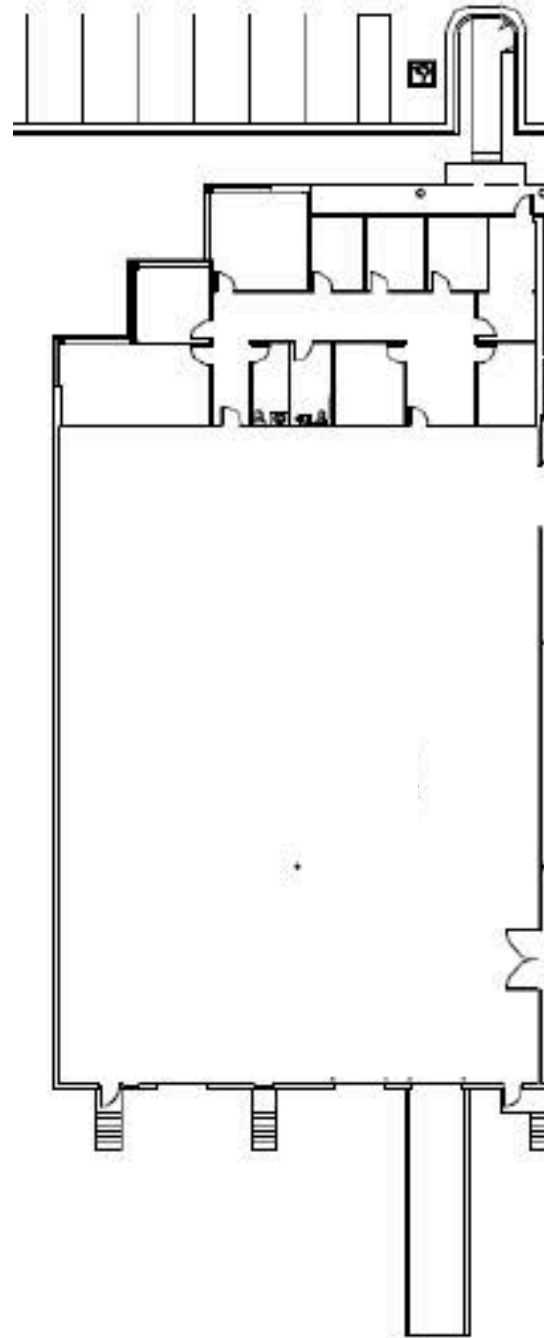
OWNED BY:



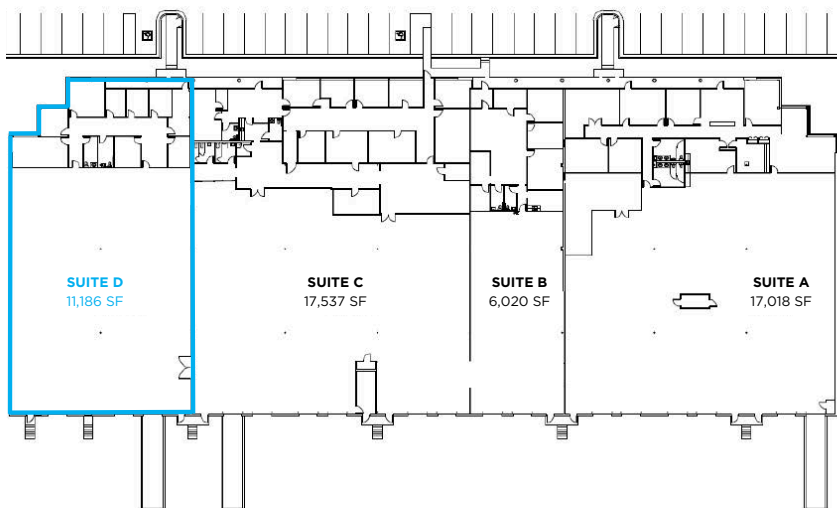
PROPERTY INFORMATION

Total Size: 11,186 SF
 Office: 1,000 SF
 Warehouse: 10,186 SF
 Term: Sublease through 7/31/2027
 Loading: Two (2) Dock High Doors
 One (1) Drive-In Door
 Clear Height: 26'
 Location: +/- 1.2 miles to I - 20
 +/- 4.8 miles to I - 285

FLOORPLAN



KEYPLAN



APEX INDUSTRIAL
REAL ESTATE ADVISORS

3500 Lenox Road NE | Suite 1275 | Atlanta, GA 30326 | apexindustrialre.com

For more information,
please contact:

ANDY HEAD

Office: (404) 595 - 1466
Cell: (404) 713 - 4601
ahead@apexindustrialre.com

BRYCE MCCAIN

Office: (404) 595 - 1552
Cell: (770) 845 - 3559
bmccain@apexindustrialre.com

Although the information contained therein was provided from sources believed to be reliable, Apex Industrial makes no representation, expressed or implied, as to its accuracy and said information is subject to errors, omissions or changes.



10,000 - 51,761 SF AVAILABLE

5335 Dividend Drive

SUITES A, B, C & D | DECATUR, GA 30035

EXTERIOR PHOTOS

OWNED BY:



APEX INDUSTRIAL
REAL ESTATE ADVISORS

3500 Lenox Road NE | Suite 1275 | Atlanta, GA 30326 | apexindustrialre.com

For more information,
please contact:

ANDY HEAD

Office: (404) 595 - 1466
Cell: (404) 713 - 4601
ahead@apexindustrialre.com

BRYCE MCCAIN

Office: (404) 595 - 1552
Cell: (770) 845 - 3559
bmccain@apexindustrialre.com

Although the information contained therein was provided from sources believed to be reliable, Apex Industrial makes no representation, expressed or implied, as to its accuracy and said information is subject to errors, omissions or changes.



10,000 - 51,761 SF AVAILABLE

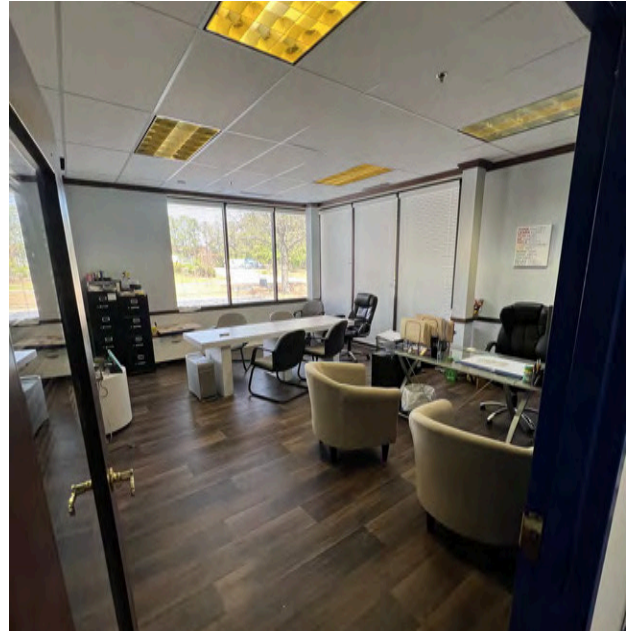
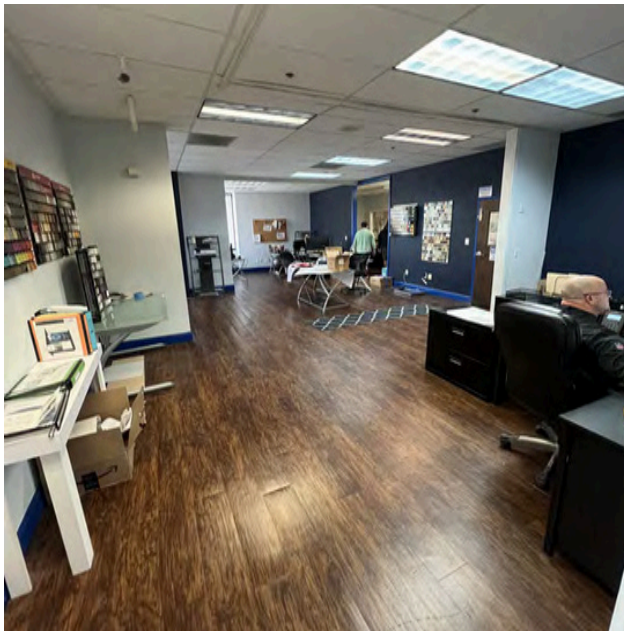
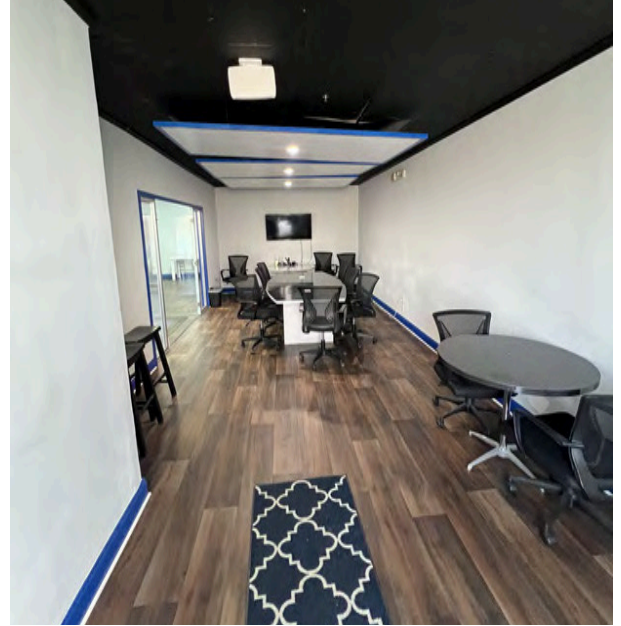
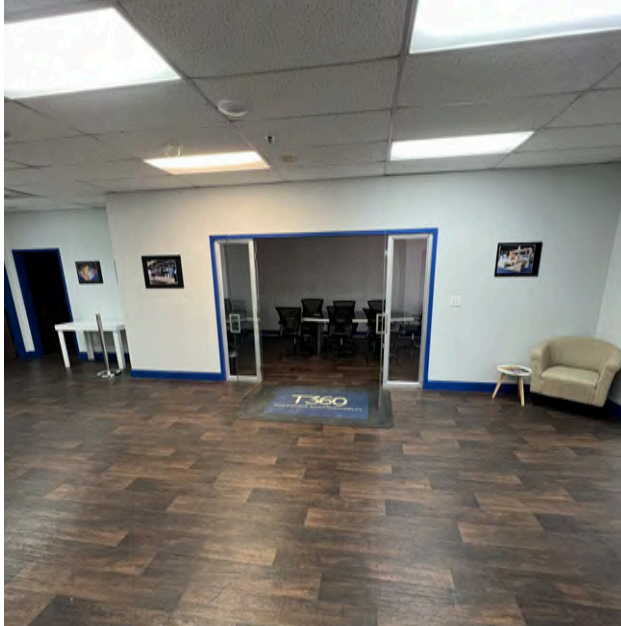
5335 Dividend Drive

SUITES A, B, C & D | DECATUR, GA 30035

INTERIOR PHOTOS

OWNED BY:

Dalfen
INDUSTRIAL



APEX INDUSTRIAL
REAL ESTATE ADVISORS

3500 Lenox Road NE | Suite 1275 | Atlanta, GA 30326 | apexindustrialre.com

For more information,
please contact:

ANDY HEAD

Office: (404) 595 - 1466
Cell: (404) 713 - 4601
ahead@apexindustrialre.com

BRYCE MCCAIN

Office: (404) 595 - 1552
Cell: (770) 845 - 3559
bmccain@apexindustrialre.com

Although the information contained therein was provided from sources believed to be reliable, Apex Industrial makes no representation, expressed or implied, as to its accuracy and said information is subject to errors, omissions or changes.