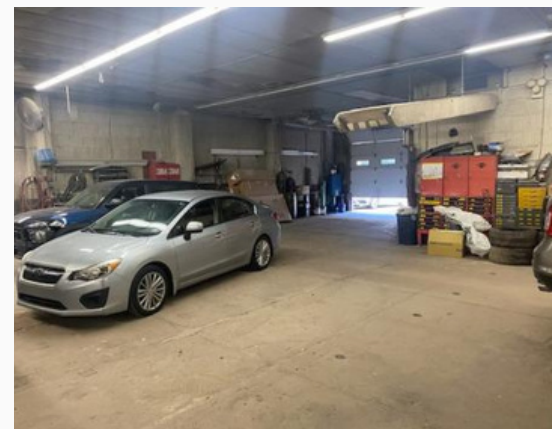


# COMMERCIAL BUILDING, BUSINESS AND HOUSE

LOCATION: 512 CHURCH STREET & 517 SPRING STREET - ROUTE 6  
HAWLEY, PENNSYLVANIA, 18428, UNITED STATES  
PROPERTY TYPE: COMMERCIAL



Commercial building with separate residential house. Property spans from Church Street all the way through to Route 6. The building is currently an auto body shop, fits between 15-20 cars, spray booth and shop area, attic storage space and two bathrooms, large bay door, two front offices and waiting area. Sale includes all equipment. Large yard for storage. The house is vacant, two meters; handyman special.

## PRICING (USD)



List Price: \$1,100,000

## FEATURES

-  10,000 Sq. Ft.
-  0.5 Acres
-  Storage Space
-  Multiple Bathrooms
-  Includes Equipment



## CONTACT & SHOWING INFO

Michael Chubirka

(866) 615-9548 | [email@realtyhive.com](mailto:email@realtyhive.com)

