



For Sublease

Site Features:

- **Total:** ±23,555 SF
- **Office:** ±16,523SF
- **Warehouse Shop:** ±7,032 SF
- **Land:** 10.2 AC
- Fully furnished office space
- One (1) 5-Ton Crane
- **Available Now**
- **Sublease Term:** 12/31/2029
- **Sublease Rate:** \$1.30/sf/mo NNN
- **Operating Expenses:** \$10,000/mo (approx.)

2909 Aaron Street Deer Park, TX 77536

Ryan Fuselier

+1 713 888 4032

ryan.fuselier@jll.com

Kevin Erck, SIOR

+1 713 888 4067

kevin.erck@jll.com

Bryant Lach

+1 713 888 4093

bryant.lach@jll.com



For Sublease

±23,555 SF Industrial Office/Warehouse on ±10.2 AC

2909 Aaron Street | Deer Park, TX 77536

Office Area



Conference Room



Break Area



Kitchen



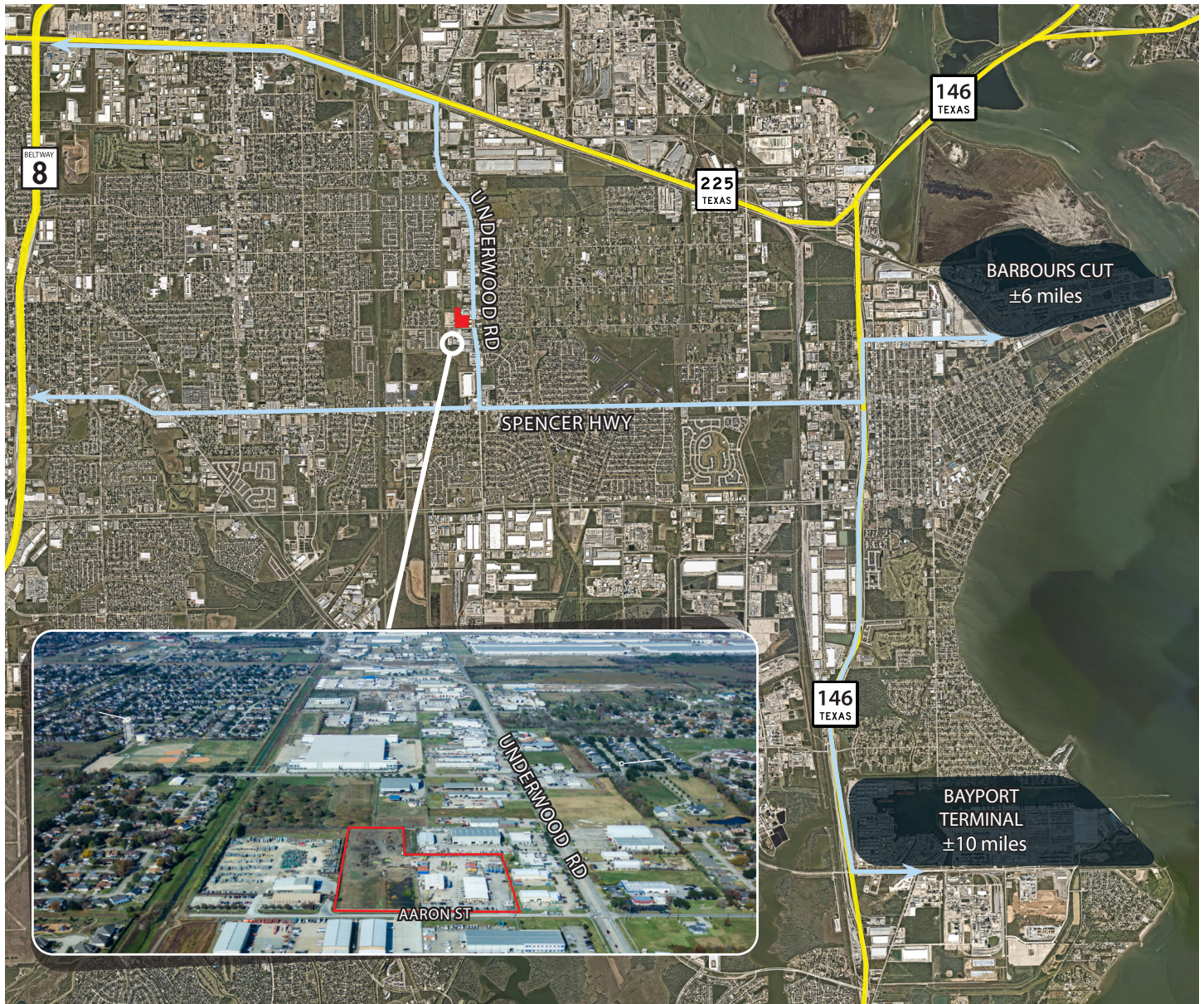
Although information has been obtained from sources deemed reliable, JLL does not make any guarantees, warranties or representations, express or implied, as to the completeness or accuracy as to the information contained herein. Any projections, opinions, assumptions or estimates used are for example only. There may be differences between projected and actual results, and those differences may be material. JLL does not accept any liability for any loss or damage suffered by any party resulting from reliance on this information. If the recipient of this information has signed a confidentiality agreement with JLL regarding this matter, this information is subject to the terms of that agreement. ©2023 Jones Lang LaSalle IP, Inc. All rights reserved.



For Sublease

±23,555 SF Industrial Office/Warehouse on ±10.2 AC

2909 Aaron Street | Deer Park, TX 77536



Ryan Fuselier

+1 713 888 4032

ryan.fuselier@jll.com

Kevin Erck, SIOR

+1 713 888 4067

kevin.erck@jll.com

Bryant Lach

+1 713 888 4093

bryant.lach@jll.com

Although information has been obtained from sources deemed reliable, JLL does not make any guarantees, warranties or representations, express or implied, as to the completeness or accuracy as to the information contained herein. Any projections, opinions, assumptions or estimates used are for example only. There may be differences between projected and actual results, and those differences may be material. JLL does not accept any liability for any loss or damage suffered by any party resulting from reliance on this information. If the recipient of this information has signed a confidentiality agreement with JLL regarding this matter, this information is subject to the terms of that agreement. ©2023 Jones Lang LaSalle IP, Inc. All rights reserved.

