



UC San Diego

3333 - 10350  
N Torrey Pines Ct

**LINK** | *Torrey Pines*

**UC San Diego Innovation Hub**

[LinkTorreyPines.com](http://LinkTorreyPines.com)

**LINK** *Torrey Pines*  
UC San Diego Innovation Hub

 **SALK INSTITUTE**  
FOR BIOLOGICAL STUDIES

**UC San Diego**

TORREY PINES

GOLF COURSE

N TORREY PINES ROAD


**ALTOS**

 **Calibr**



**SYNTHETIC GENOMICS®**

SORRENTO VALLEY


 **Scripps Research**

**SBP**

© *Johnson & Johnson*

**SBP**

  
**VERTEX**

 **Scripps Research**


SORRENTO

**PACIRA**  
PHARMACEUTICALS, INC.

**PACIRA**  
PHARMACEUTICALS, INC.

805

5

 **Scripps Research**

Gary & Mary  
**West Wireless Health Institute™**

**conKwest**  **astellas**

 **GENERAL ATOMICS**

 **LabCorp**

GENESEE AVENUE

**ThermoFisher**  
SCIENTIFIC



Click here to take flight and see the unmatched views that **LINK** has to offer

3344

3366

3377

10350

3333

# LINK TODAY WITH YESTERDAY

Perched above the Pacific Ocean and nestled along the 10th hole of the Torrey Pines Golf Course, Link boasts panoramic views, awe-inspiring sunsets and cool ocean breezes. Come be a part of this community rich with history, overlooking a famous course built on the site of Camp Callan, a U.S. Army installation during World War II.



## Campus Amenities

On campus without ever needing to leave. Enjoy our gym, shower and lockers, impromptu gathering spaces, and incredible views overlooking the Torrey Pines Golf Course and ocean.

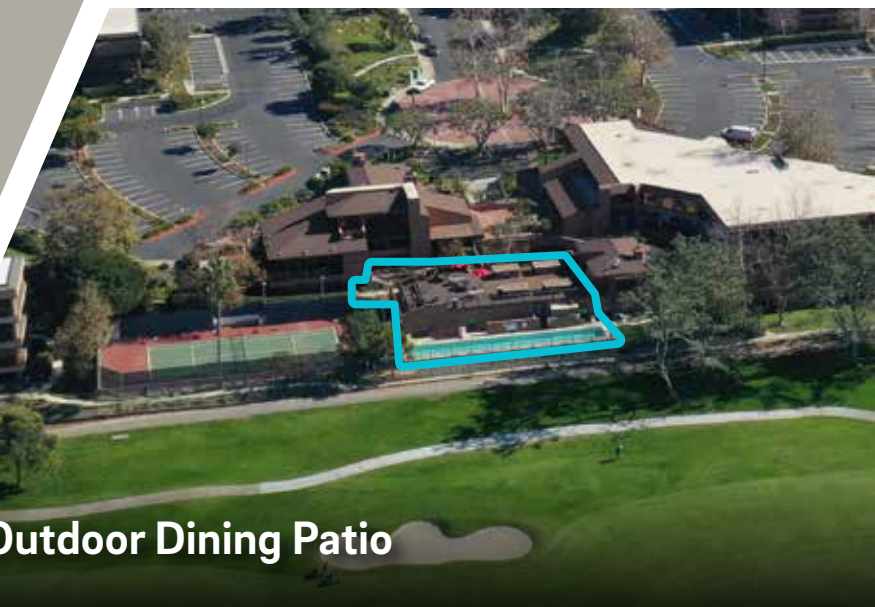
Golf, hike, surf, paddle, run and glide... We offer the quickest access to San Diego's best outdoor activities without wasting extra time.



**Outdoor Seating**



**Fitness Center + Showers & Lockers**



**Outdoor Dining Patio**



**Weekly Food Trucks**

# Nearby Dining Options within ±5-minute drive



Greenfinch | Mustangs and Burros

Cliff Hanger Cafe

**LINK** Torrey Pines  
UC San Diego Innovation Hub

The Grill at Torrey Pines

Bella Vista Social Club

The Bistro at The Strand

The Farmer & The Sea Horse

Cafe Ventanas

Joya Kitchen



# LINK TO CHANGE

Are you looking for concrete floors, expansive window lines and modern finishes? Link will change the way you work with just the right workspace.

# Availability Summary

Building - Suite	RSF	Details
3366 - Suite 110	2,400	Available April 2025 w/60-days' notice. Creative space with exposed ceilings, partial ocean views, 2 meeting rooms, conference room, open kitchen, and balance open office. <b>Can be combined with Suite 130 for 5,500 sf.</b>
3366 - Suite 140	1,722	3 offices, conference room, break area, reception, IT/server room.
3366 - Suite 220	2,190	Cool & creative space with upgraded finishes, polished concrete and ocean/golf course views.
3366 - Suite 250	2,153	Available February 2025. Reception area, 4 offices, 3 conference/huddle rooms, break room.
3366 - Suite 310	3,493	Available June 2025. 5 offices, large conference room, small conference room, open area for cubicles, kitchen, polished concrete to the open area & kitchen. Ocean/golf course views.  Furniture shown on floor plan is not included.
3366 - Suite 318	950	2 offices, copy/print room and reception. <b>Can be combined with Suite 320 for 1,942 sf.</b>
3366 - Suite 320	992	2 offices, conference room, copy/print room and break room. <b>Can be combined with Suite 318 for 1,942 sf.</b>
3377 - Suite 150	9,095	Shell space. Direct entry from building exterior. Potential creative space with ocean views.

[▶ Take a Virtual Tour - Fitness Center](#)





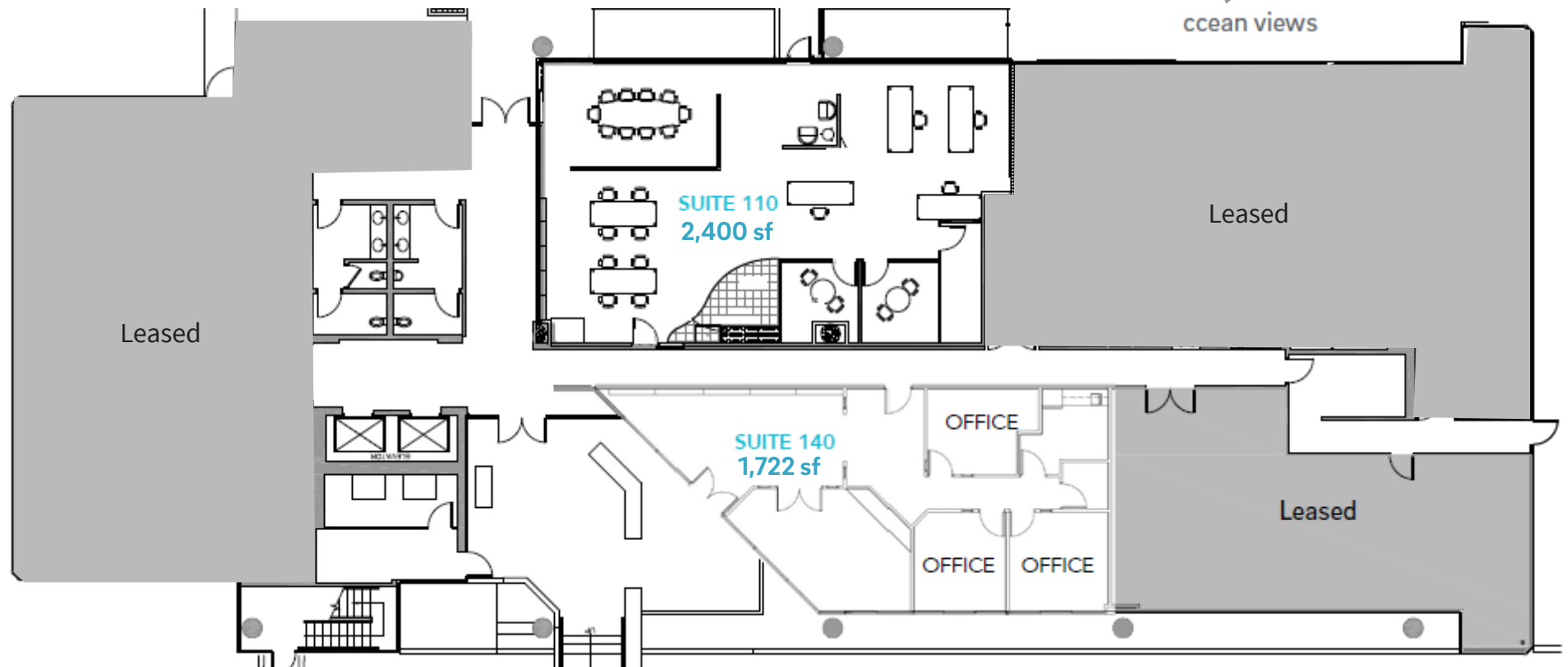
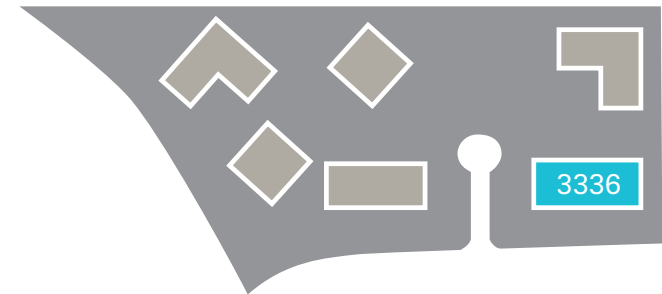


3366 N. Torrey Pines Court | **Third floor**

Suite 110 - 2,400 sf

Suite 140 - 1,722 sf

↑ West



**Suite 110 - 2,400 sf** (avail. April 2025 w/60-days' notice)

- Creative space w/exposed ceilings
- Partial ocean views
- 2 meeting rooms
- Conference room
- Open kitchen
- Balance open office

[▶ Take a Virtual Tour - 3366 #110](#)

**Suite 140 - 1,722 sf** (avail. now)

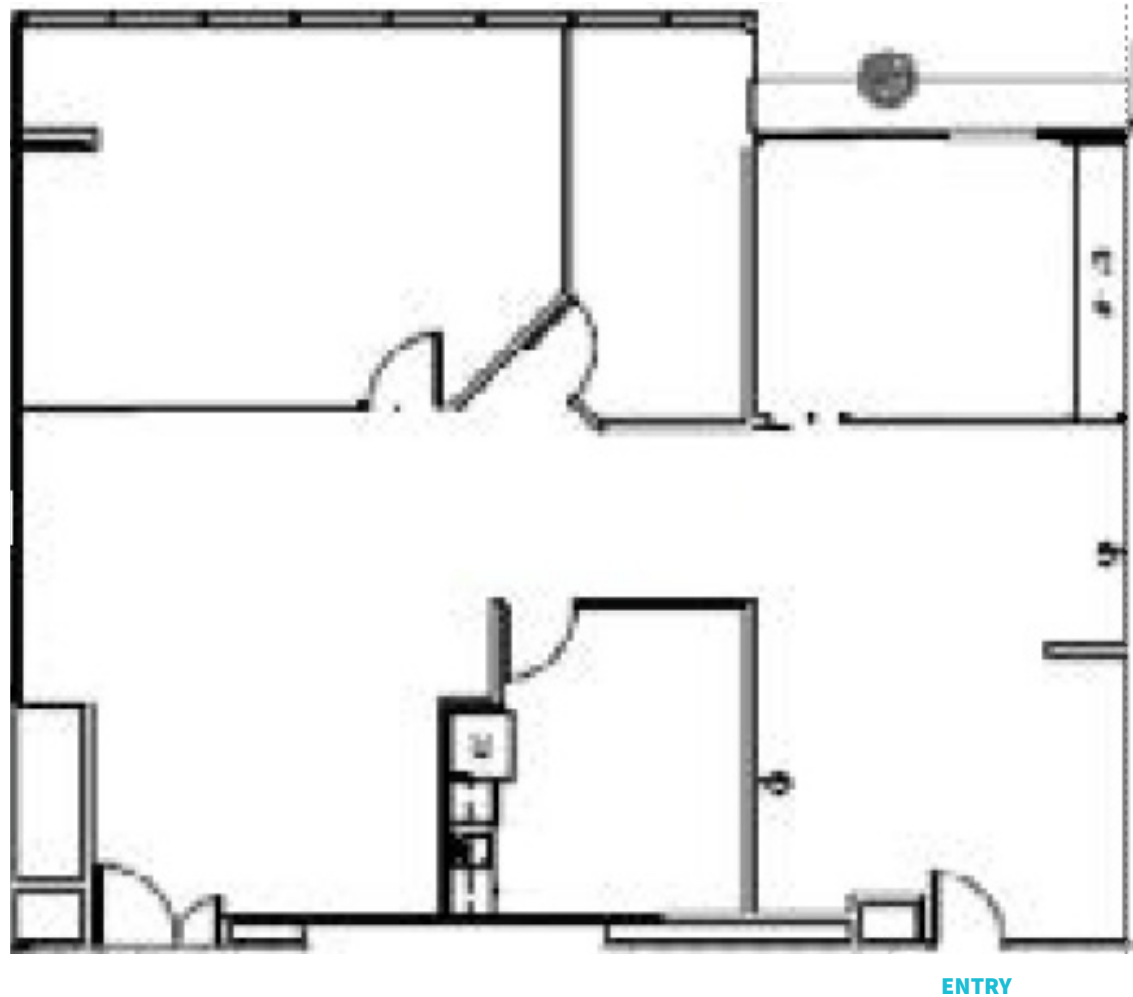
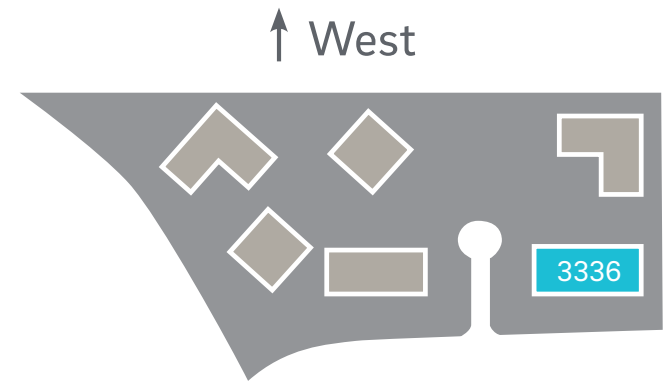
- Reception
- 3 Offices
- Conference room
- Break area
- IT/server room

[▶ Take a Virtual Tour - 3366 #140](#)

# 3366 N. Torrey Pines Court Suite 220 - 2,190 sf | available now

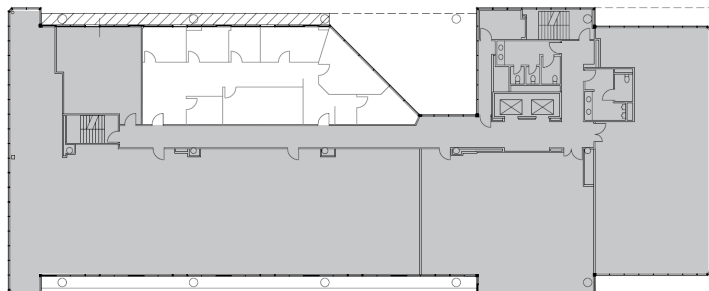
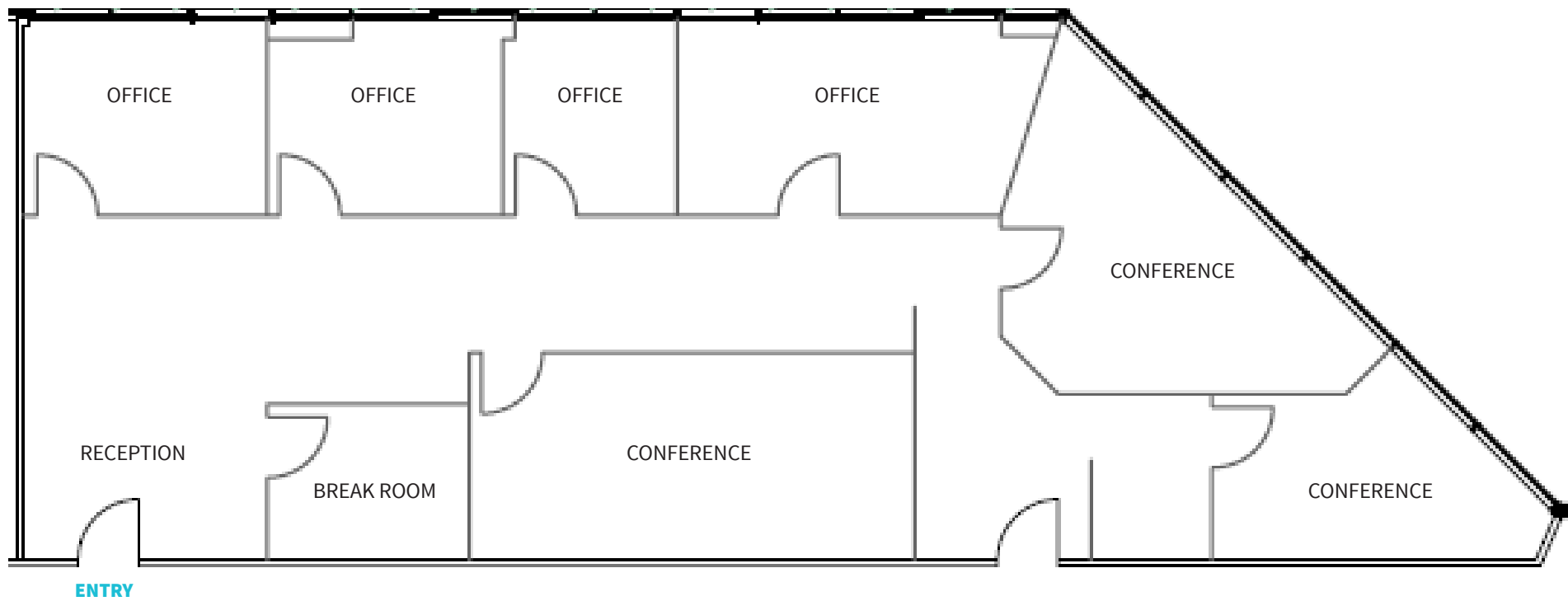
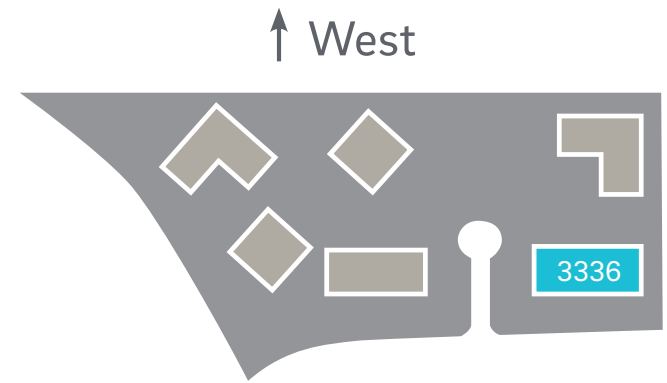
- Suite 220
- Ocean/golf course views
- Cool & creative space with upgraded finishes, polished concrete
- Private office
- Huddle room
- Conference room
- Break area
- Open office

 [Take a Virtual Tour - 3366 #220](#)



# 3366 N. Torrey Pines Court Suite 250 - 2,153 sf | available February 2025

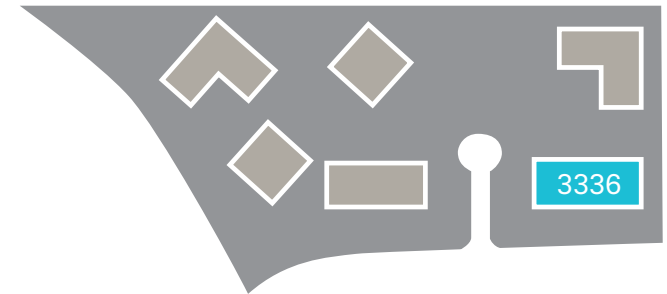
- Reception
- 4 Offices
- 3 Conference rooms
- Break room



# 3366 N. Torrey Pines Court

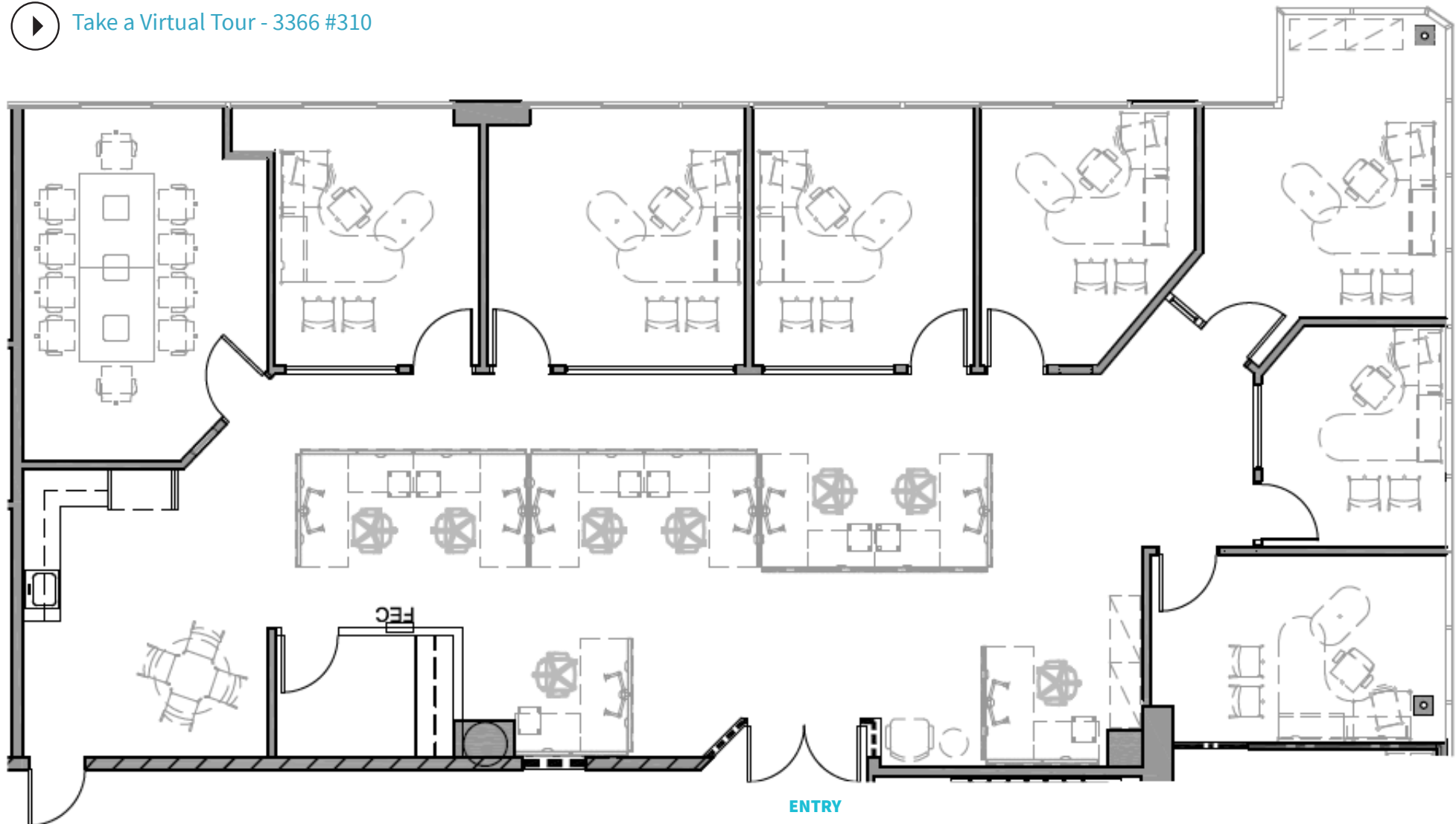
## Suite 310 - 3,493 sf | available June 2025

↑ West



- 5 offices
- Large conference room
- Small conference room
- Open area for cubicles
- Kitchen
- Polished concrete to the open area and kitchen
- Ocean views - see photos on next page
- Furniture not included

[▶ Take a Virtual Tour - 3366 #310](#)



3366 N. Torrey Pines Court  
Suite 310 | [Ocean view photos](#)

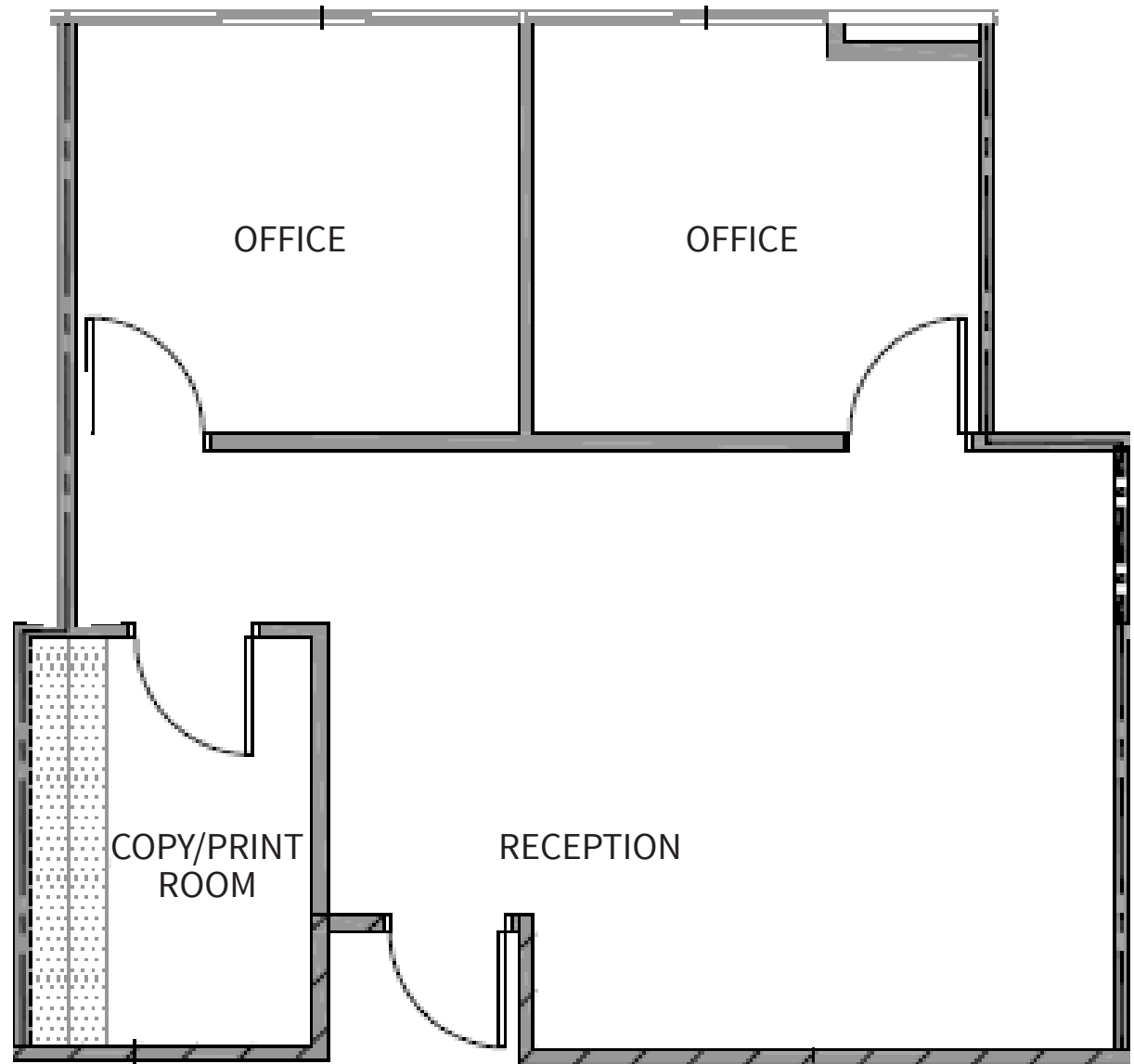
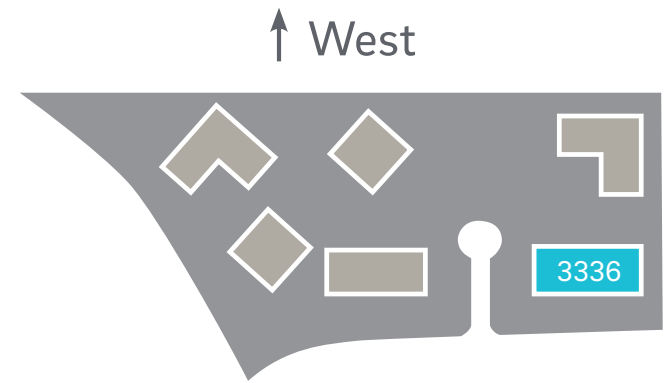


# 3366 N. Torrey Pines Court Suite 318 - 950 sf | available now

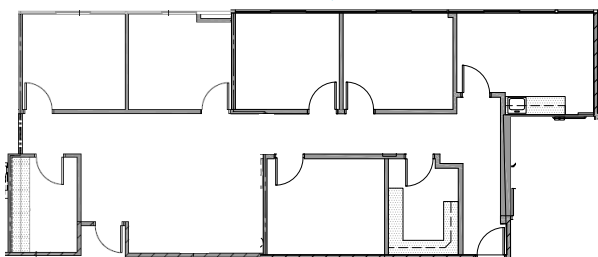
(can be combined with Suite 320 for ± 1,942 sf)

- 2 offices
- Copy/print room
- Reception

[▶ Take a Virtual Tour - 3366 #318](#)



Suites combined for ± 1,942 sf



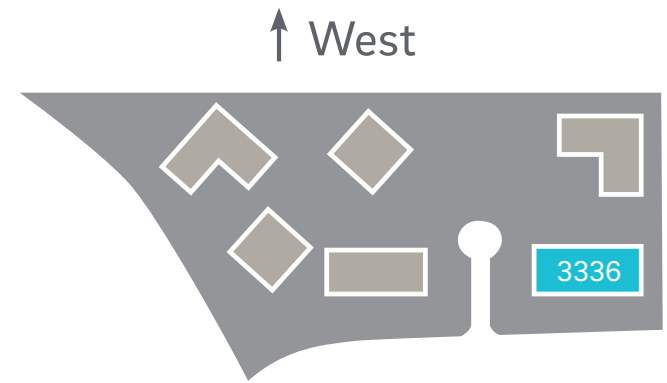
# 3366 N. Torrey Pines Court

## Suite 320 - 992 sf | available now

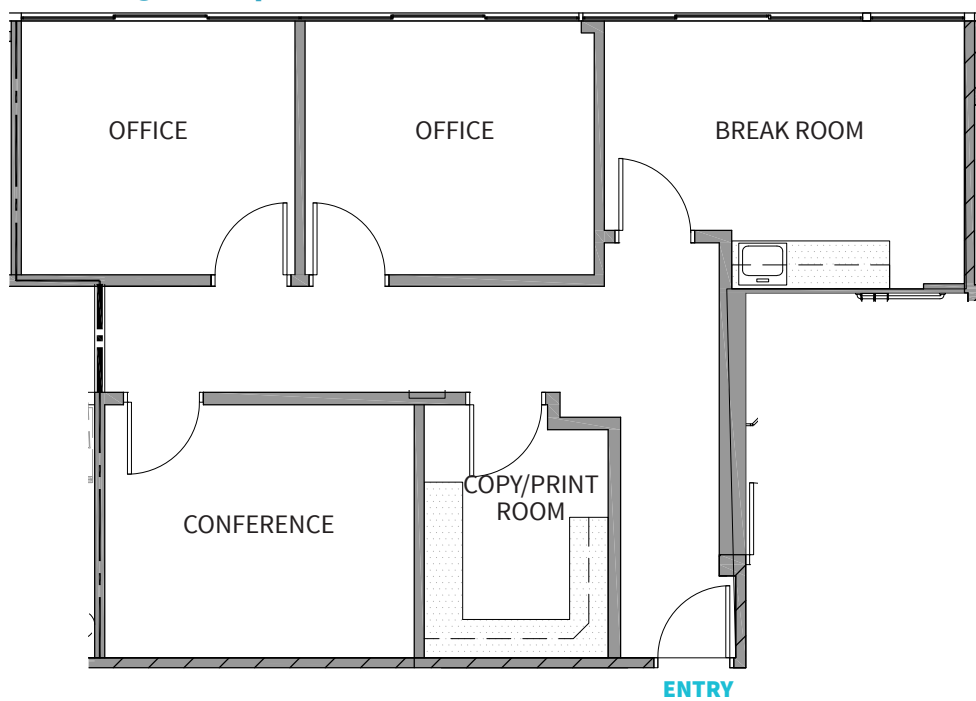
(can be combined with Suite 318 for ± 1,942 sf)

- 2 offices
- Conference room
- Copy/print room
- Breakroom

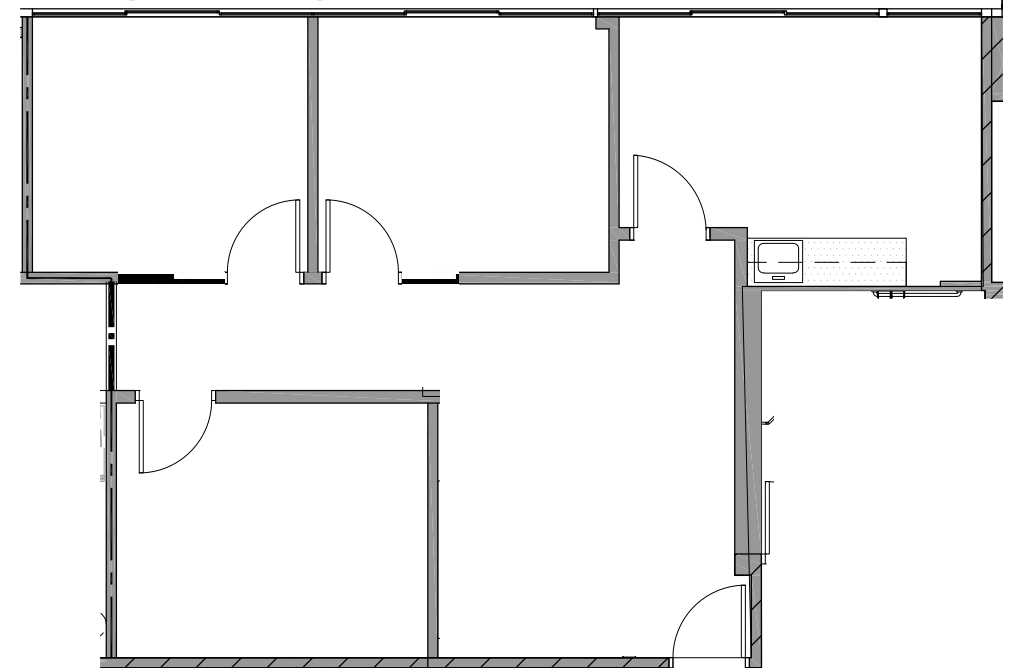
 [Take a Virtual Tour - 3366 #320](#)



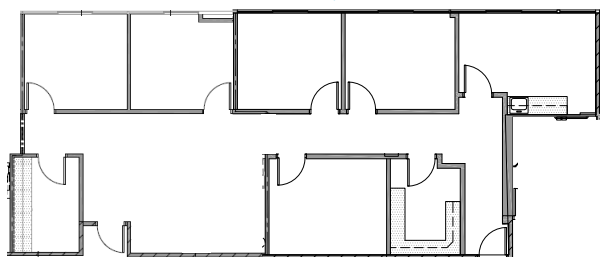
### Existing floor plan



### Conceptual floor plan



### Suites combined for ± 1,942 sf





3377

N. TORREY PINES COURT



Center for  
Creative Leadership



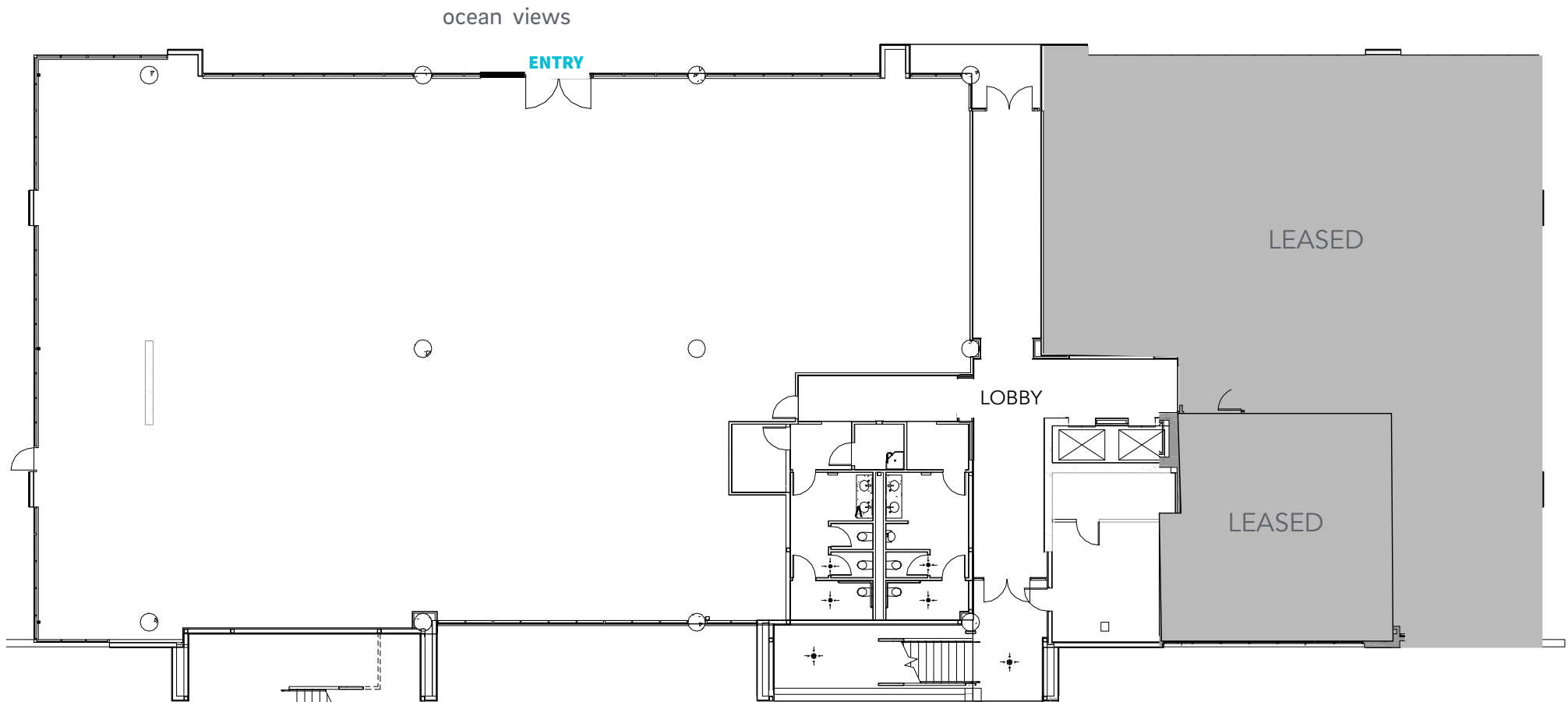
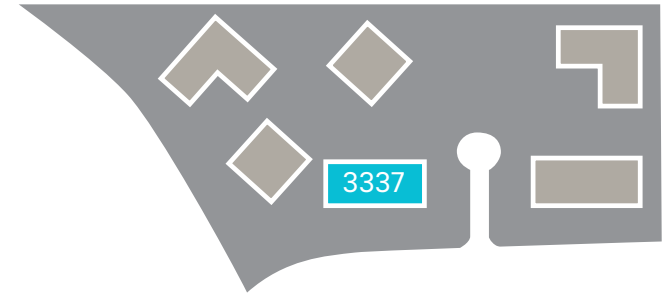
# 3377 N. Torrey Pines Court | **Existing floor plan**

## Suite 150 - 9,095 sf | available now

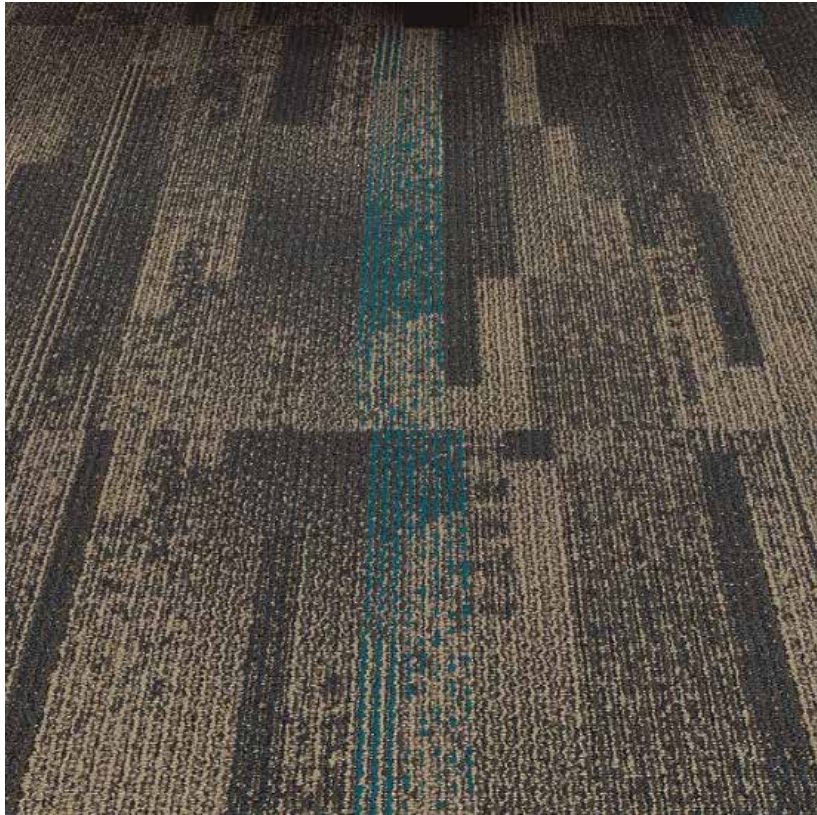
- Shell Condition - potential creative space
- Direct entry from building exterior
- Ocean views

 [Take a Virtual Tour - 3377 #150](#)

↑ West



# Spec Suite Finishes



CARPET



ENTRY CHANDELIER



ISLAND PENDANT



GENERAL LIGHTING



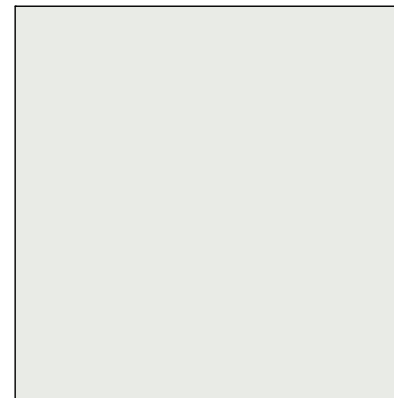
SOLID SUFACE COUNTERTOP



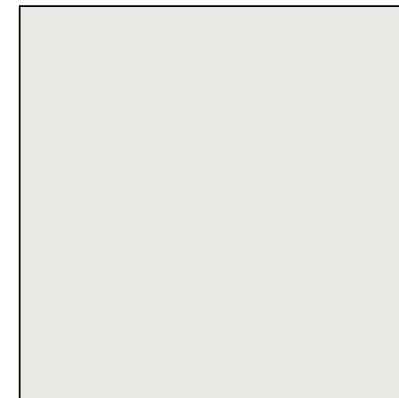
MILLWORK LAMINATE



TILE BACKSPLASH



FIELD PAINT



WALL BASE



**Tim Olson**  
858.410.1253  
tim.olson@jll.com  
RE lic. #01364117

**Greg Moore**  
858.410.6367  
greg.moore@jll.com  
RE lic. #02068852