

NORTHSTAR

LOGISTICS CENTER

1260 Northland Lane, Apopka, FL



737,823 SF
5 Class A Industrial Buildings
Ready for Occupancy

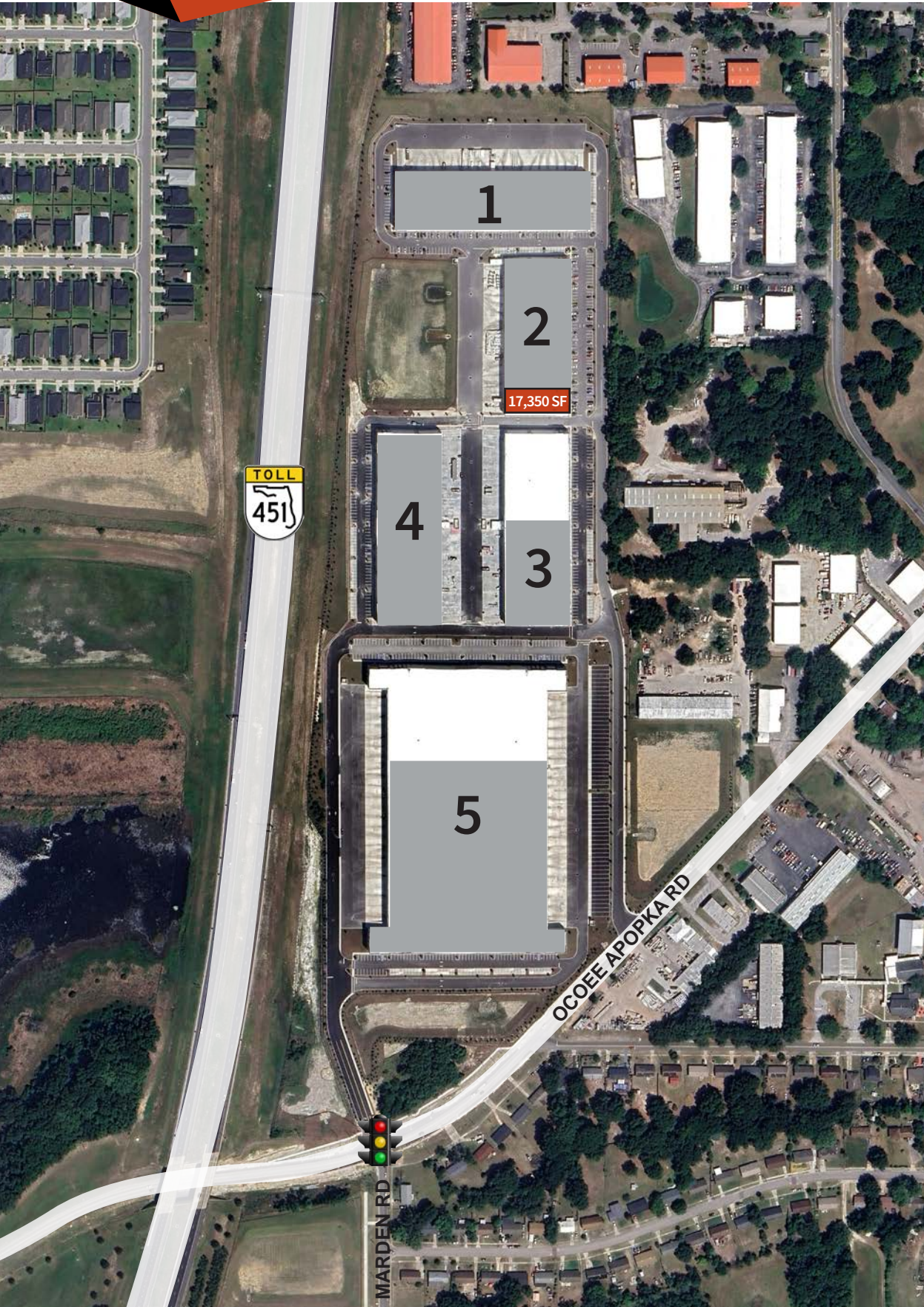
Owners/Developers



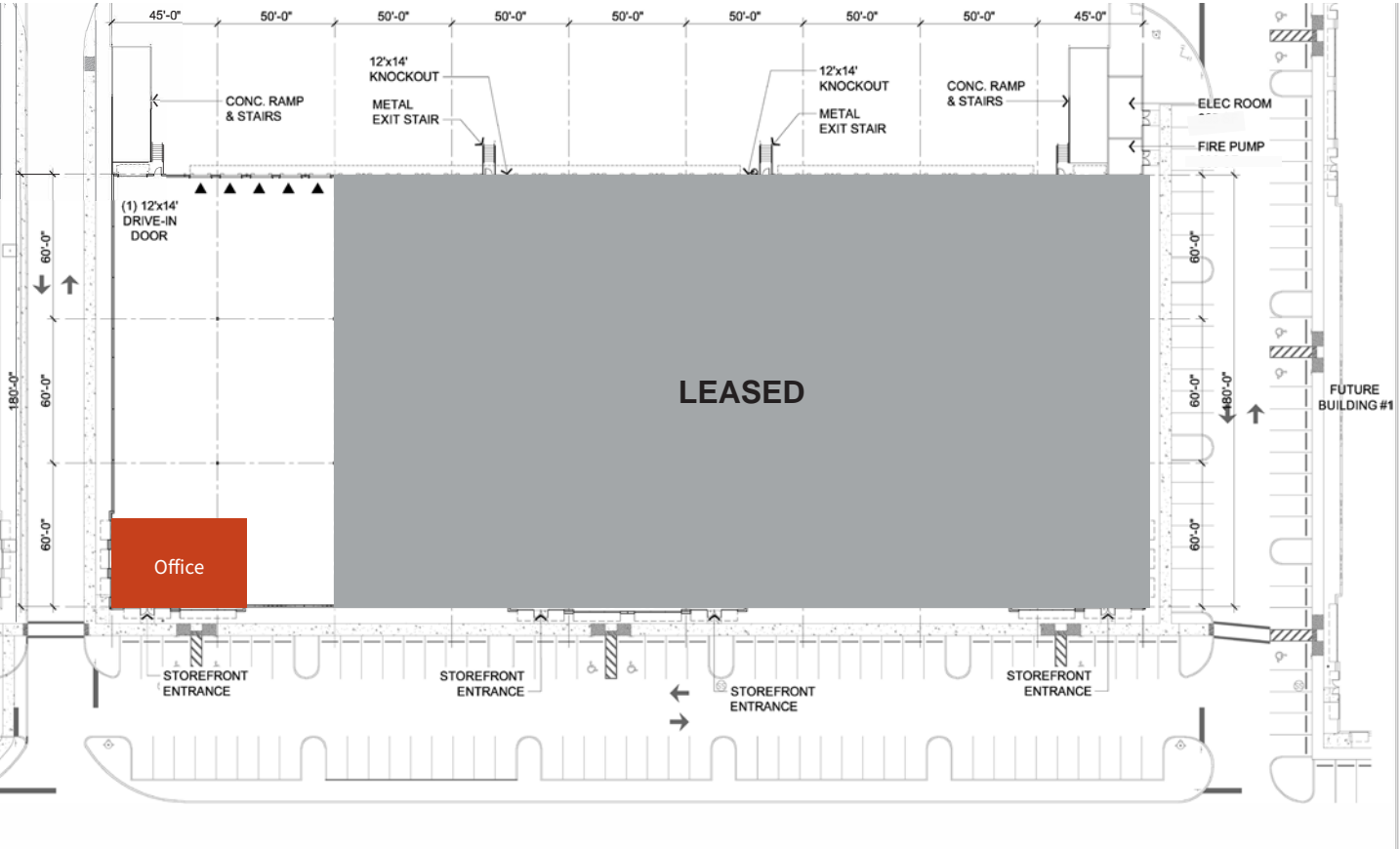
Leasing Agent



BUILDING 2



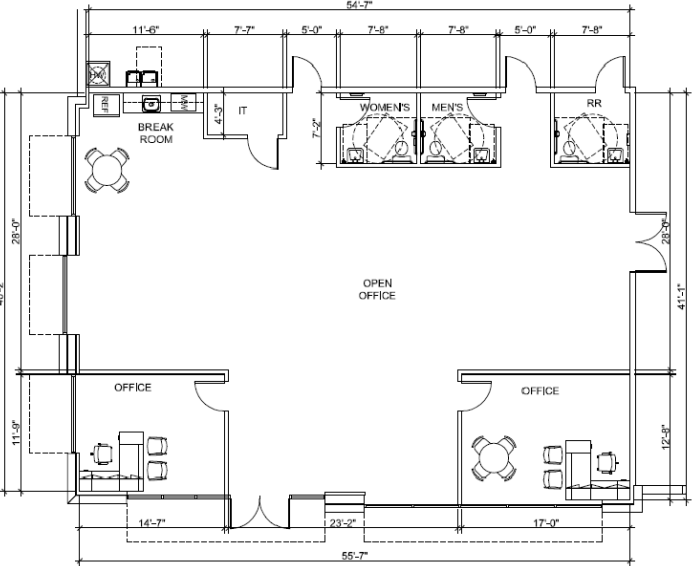
1220 Starpoint Drive



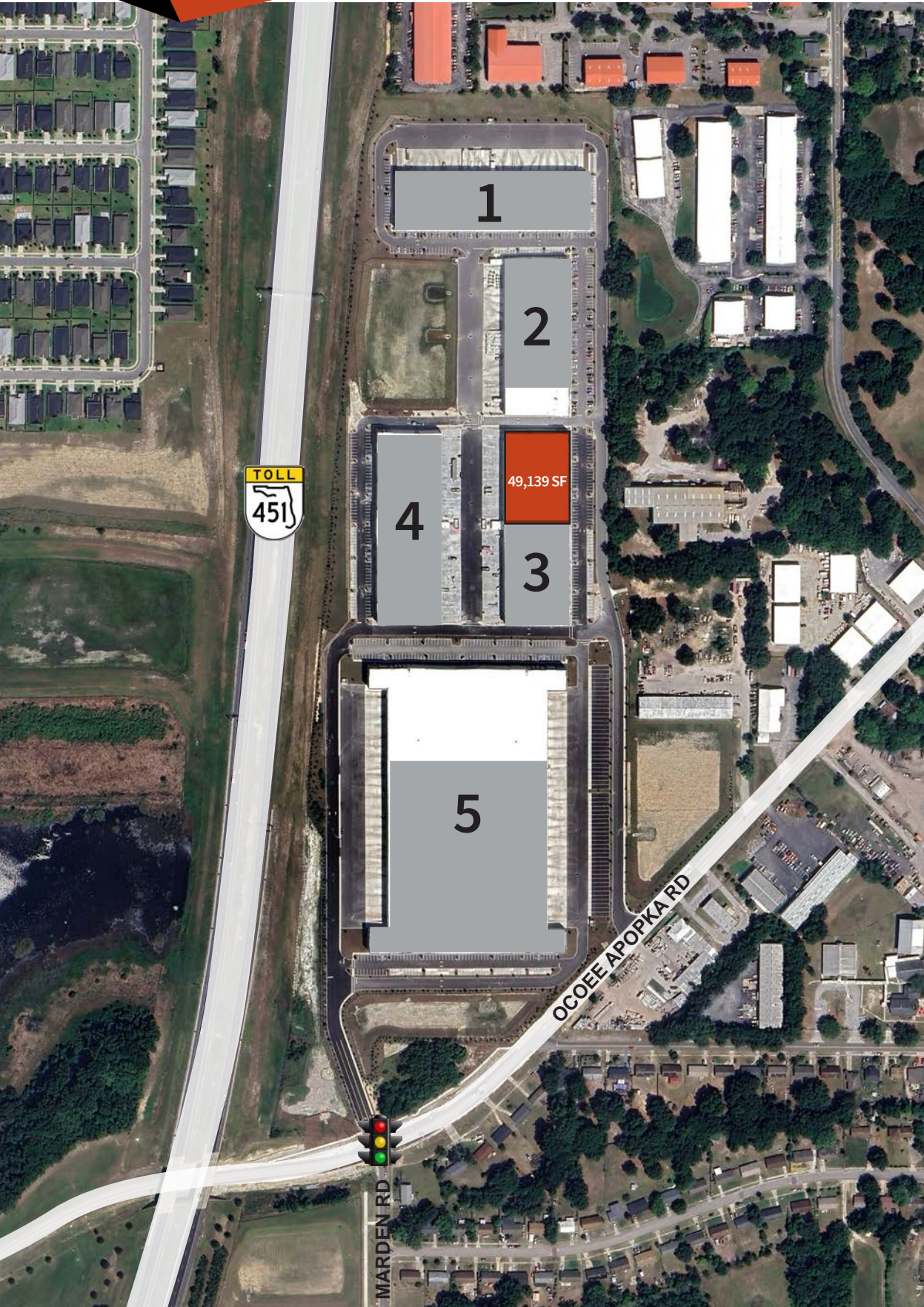
Building Details

Building Size	80,351 SF
Available	17,350 SF
Office SF	2,406 SF
Clear Height	32'
Dock Doors	5
Drive-Ins	1
Loading	Rear
Building Dimensions	440' X 180'
Column Spacing	50' X 60'
Sprinkler	ESFR
Construction	Tilt wall
Parking Spaces	100
Parking Ratio	1.25/1,000
Truck Court	130'

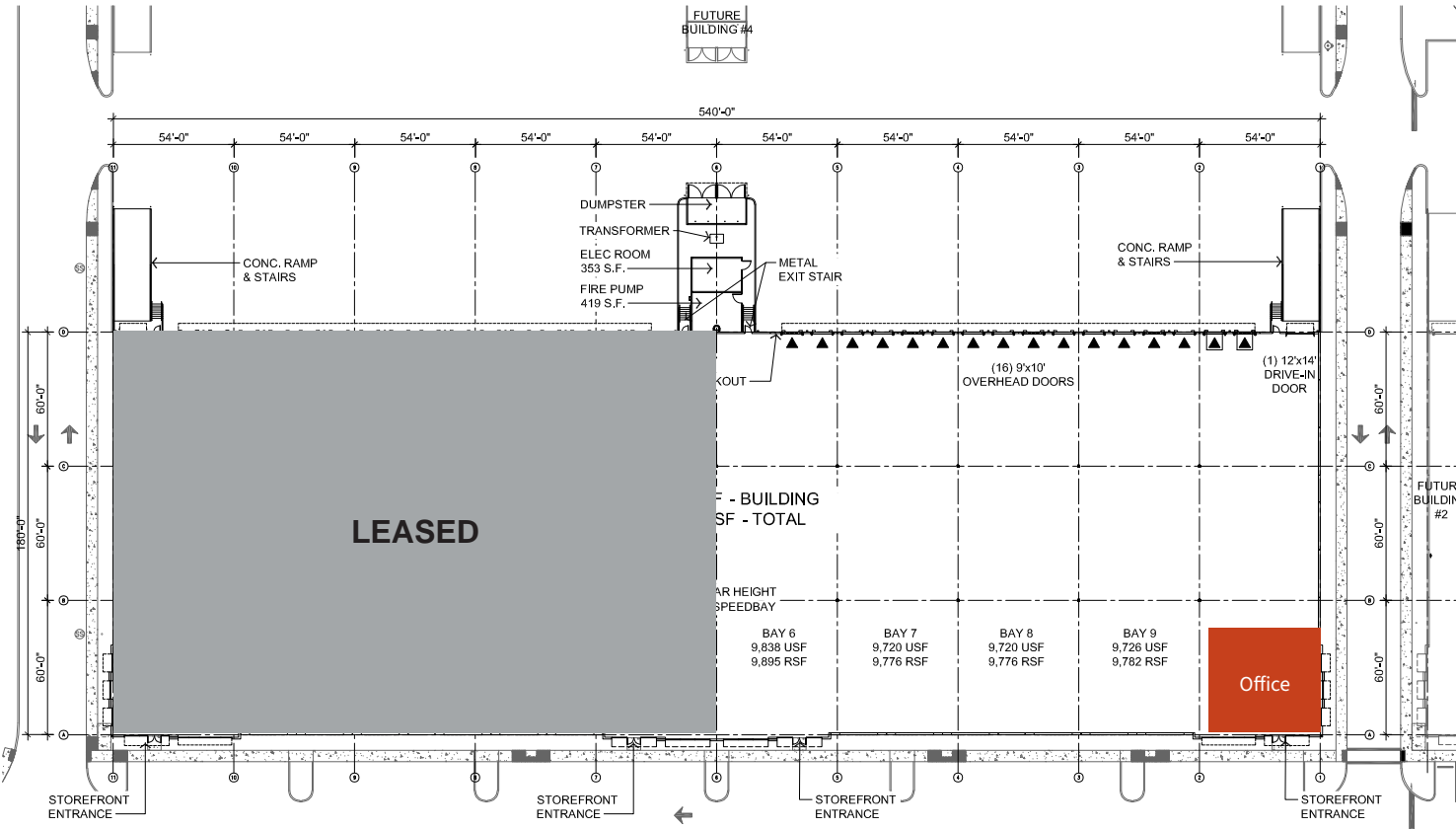
2,406 SF Office



BUILDING 3



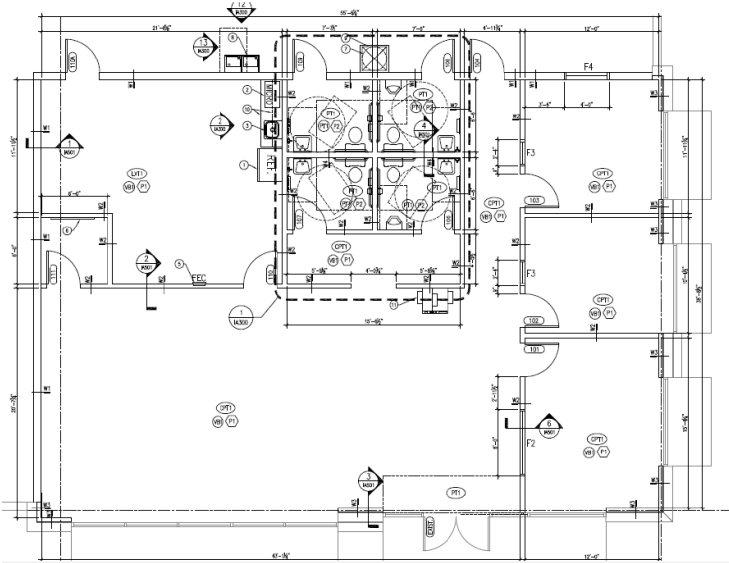
1200 Starpoint Drive



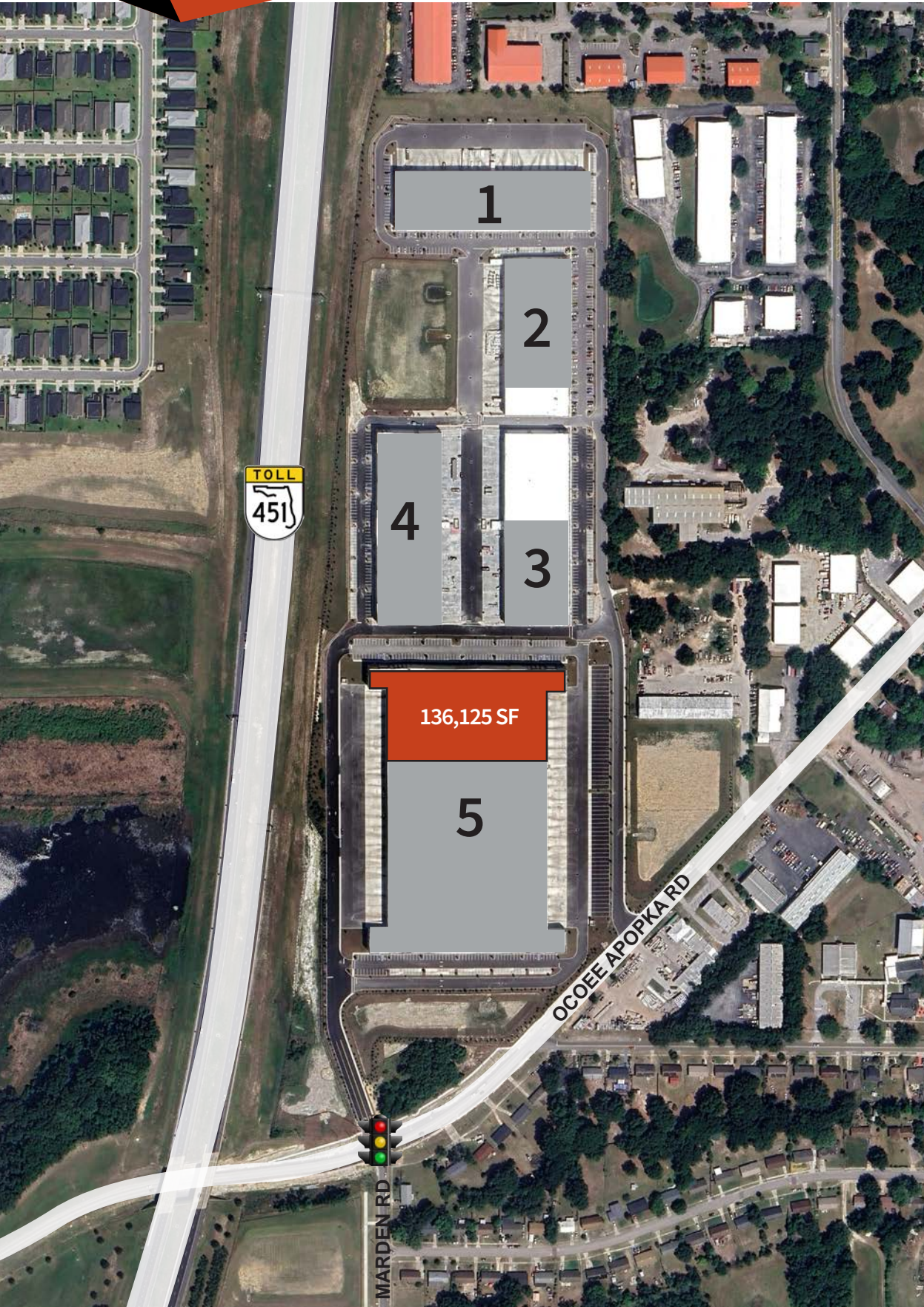
Building Details

Building Size	98,279 SF
Available	49,139 SF
Office SF	2,331 SF
Clear Height	32'
Dock Doors	16
Drive-Ins	1
Loading	Rear
Building Dimensions	540' X 180'
Column Spacing	54' X 60'
Sprinkler	ESFR
Construction	Tilt wall
Parking Spaces	100
Parking Ratio	1.02/1,000
Truck Court	180', shared

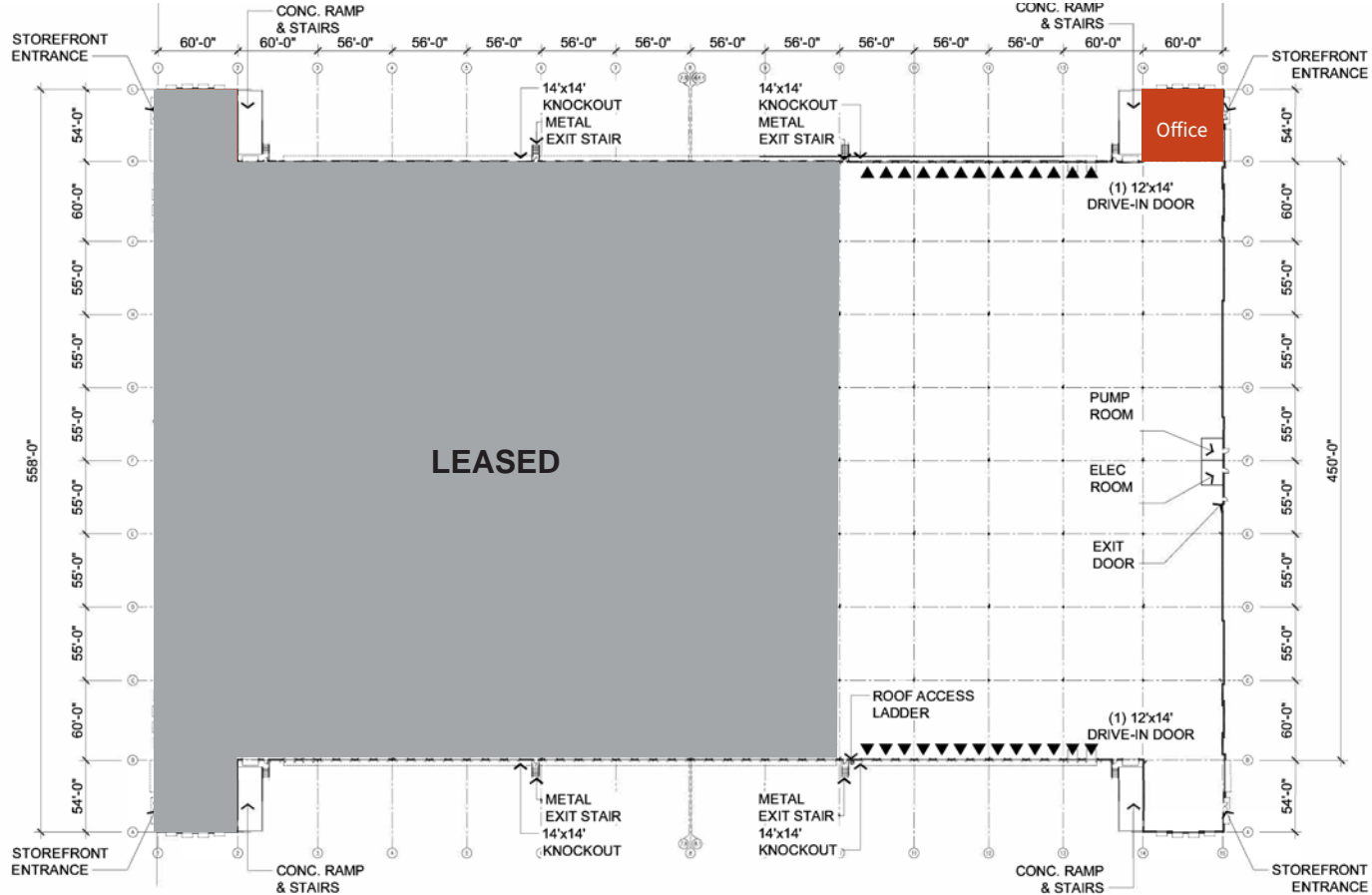
2,331 SF Office



BUILDING 5



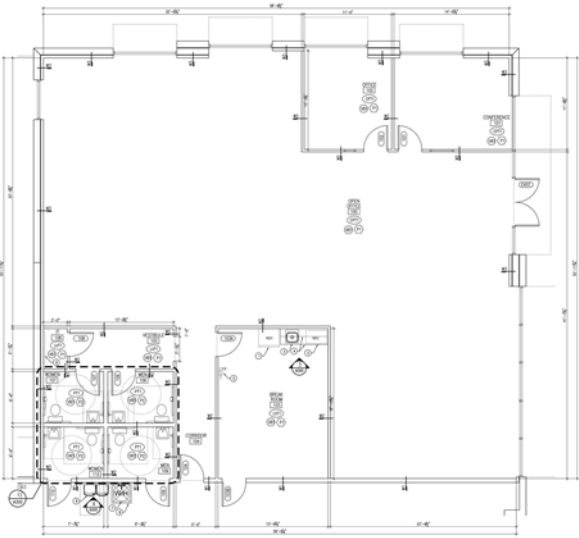
1260 Northland Lane



Building details

Building Size	373,773 SF
Available	136,125 SF, divisible
Office SF	3,371 SF
Clear Height	36'
Dock Doors	26
Drive-Ins	2
Loading	Cross Dock
Building Dimensions	800' X 450'
Column Spacing	56' X 55'
Sprinkler	ESFR
Construction	Tilt wall
Parking Spaces	226
Parking Ratio	0.60/1,000
Truck Court	130'
Trailer Parking	58 Spaces

3,371 SF Office



ACCESS AND AMENITIES



NORTHSTAR

LOGISTICS CENTER



For more information:

Bobby Isola, SIOR, CCIM
Executive Managing Director
+1 407 930 1804
bobby.isola@jll.com

W. Malcolm Clayton
Vice President
+1 407 670 9115
malcolm.clayton@jll.com

