

Sale Price

**\$820,000**

Lease Price

**\$35 per S.F.**

*Plus electric & janitorial*

- 1,818 S.F. bi-level unit
- Elevator accessible
- Four (4) reserved garage parking spaces
- New operable windows
- High-end finishes
- Kitchenette and bathroom

For more information  
please call:

**301.961.9696**

**Sam Farnum**

[sfarnum@amrcommercial.com](mailto:sfarnum@amrcommercial.com)

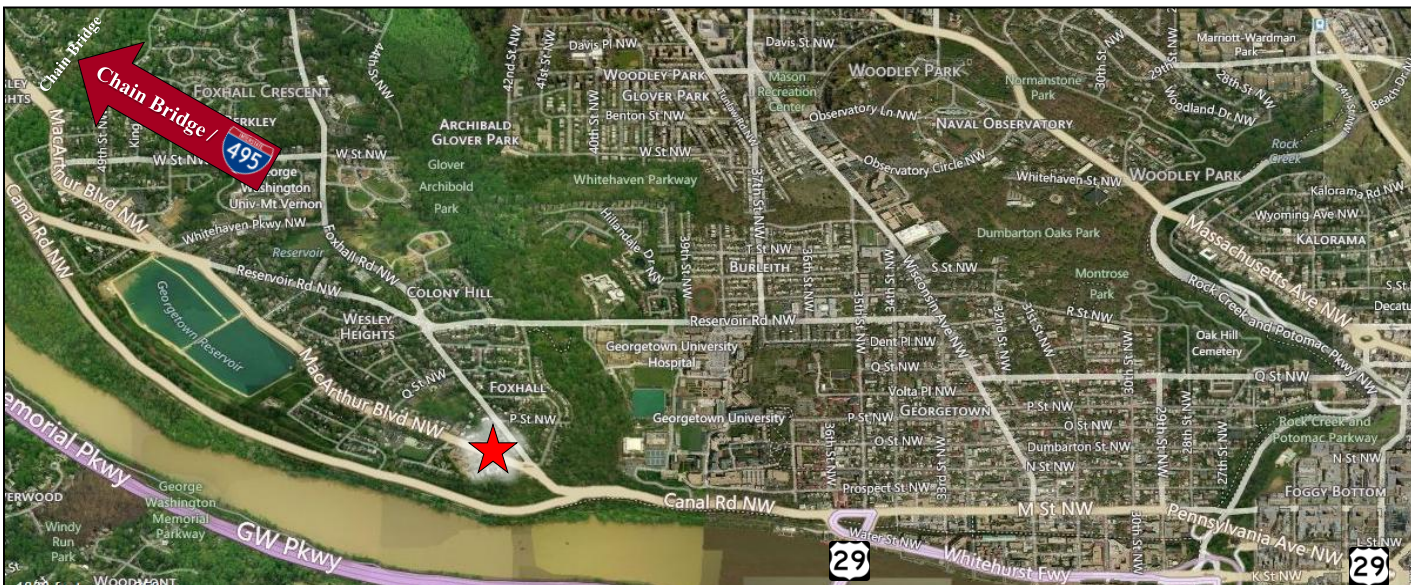
# **PALISADES / GEORGETOWN**

## **OFFICE CONDO FOR LEASE**

**4400 MacArthur Boulevard, NW**  
**Suite #305**  
**Washington, DC 20007**



*Nice mix of offices and open space with conference room and kitchen. Close proximity to great amenities; and convenient access to Downtown Washington, DC via K Street, Northern Virginia via Chain Bridge, and Maryland via Clara Barton Parkway/I-270.*



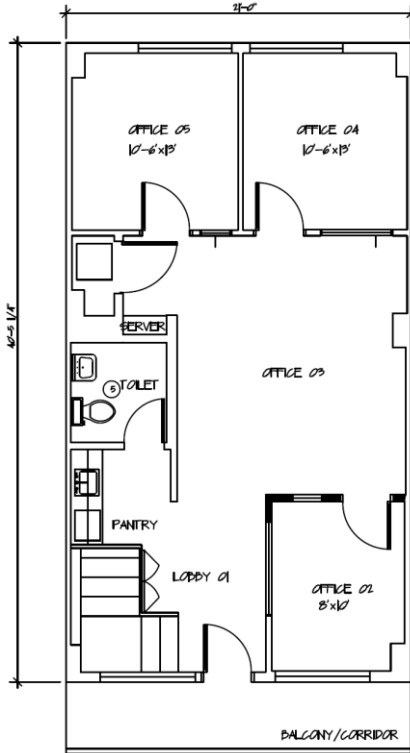
ALEXANDER, MONTROSE, RITTENBERG  
Commercial Real Estate Brokerage  
Est. 1994

*Celebrating*  
**31** Years  
1994-2025



# 4400 MacArthur Boulevard, NW Washington, DC 20007

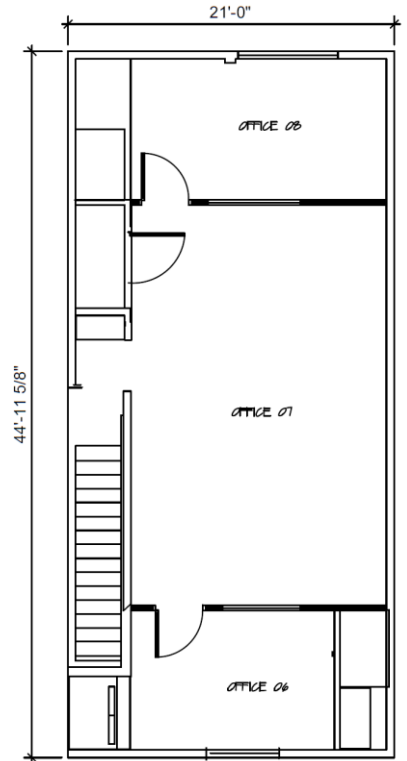
## 1st Floor



### Area Schedule (Rentable)

Name	Area
1st Floor	873 SF
2nd Floor	945 SF
Total:	1,818 SF

## 2nd Floor



NOT TO SCALE | MEASUREMENTS APPROXIMATE

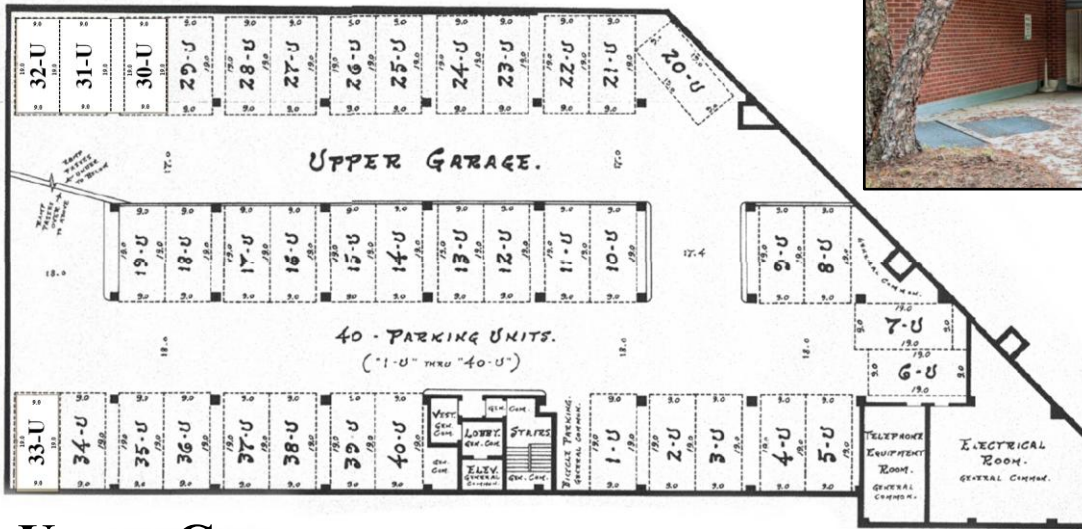
Although all information furnished is from sources we deem reliable, such information has not been verified and no express representation is made, nor is any to be implied, as to the accuracy thereof, and it is submitted subject to errors, omissions, changes of price/rental or other conditions prior to sale or lease, and subject to withdrawal without notice.



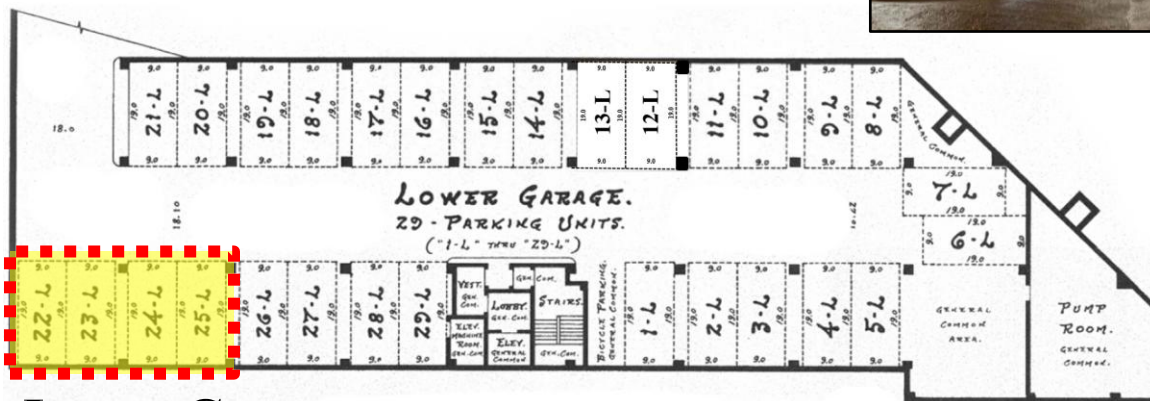
ALEXANDER, MONTROSE, RITTENBERG  
Commercial Real Estate Brokerage  
Est. 1994

Celebrating  
31 Years  
1994-2025

# 4400 MacArthur Boulevard, NW Washington, DC 20007



## Upper Garage



## Lower Garage

NOT TO SCALE | MEASUREMENTS APPROXIMATE

Although all information furnished is from sources we deem reliable, such information has not been verified and no express representation is made, nor is any to be implied, as to the accuracy thereof, and it is submitted subject to errors, omissions, changes of price/rental or other conditions prior to sale or lease, and subject to withdrawal without notice.

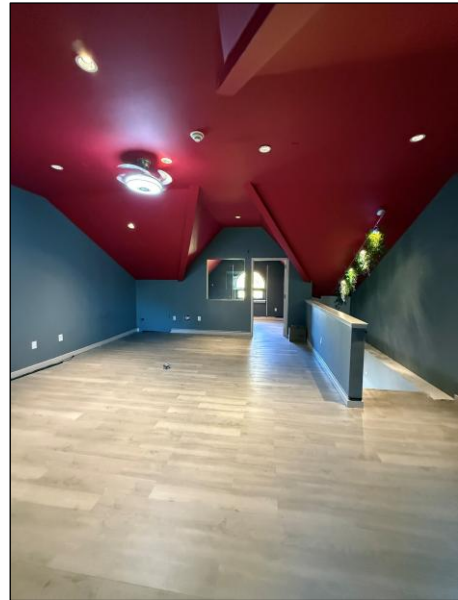
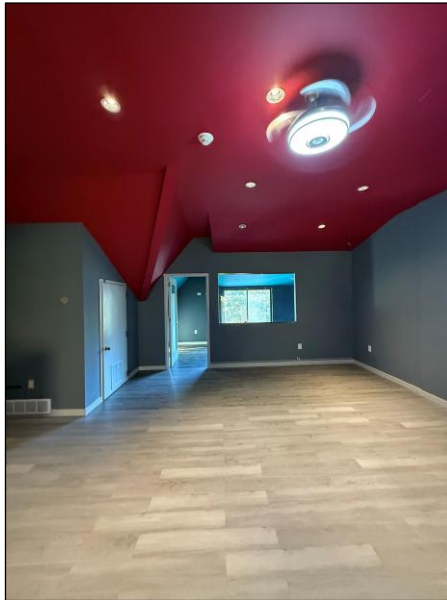


ALEXANDER, MONTROSE, RITTENBERG  
Commercial Real Estate Brokerage  
Est. 1994

*Celebrating*  
**31** Years  
1994-2025



# 4400 MacArthur Boulevard, NW Washington, DC 20007



NOT TO SCALE | MEASUREMENTS APPROXIMATE

Although all information furnished is from sources we deem reliable, such information has not been verified and no express representation is made, nor is any to be implied, as to the accuracy thereof, and it is submitted subject to errors, omissions, changes of price/rental or other conditions prior to sale or lease, and subject to withdrawal without notice.



ALEXANDER, MONTROSE, RITTENBERG  
Commercial Real Estate Brokerage  
Est. 1994

*Celebrating*  
**31** *Years*  
1994-2025