

GREEN OAK INDUSTRIAL DR. BRIGHTON, MICHIGAN

BUILD-TO-SUIT FOR SALE OR LEASE
20,000-350,000 Sq. Ft. / 36.37 Acres

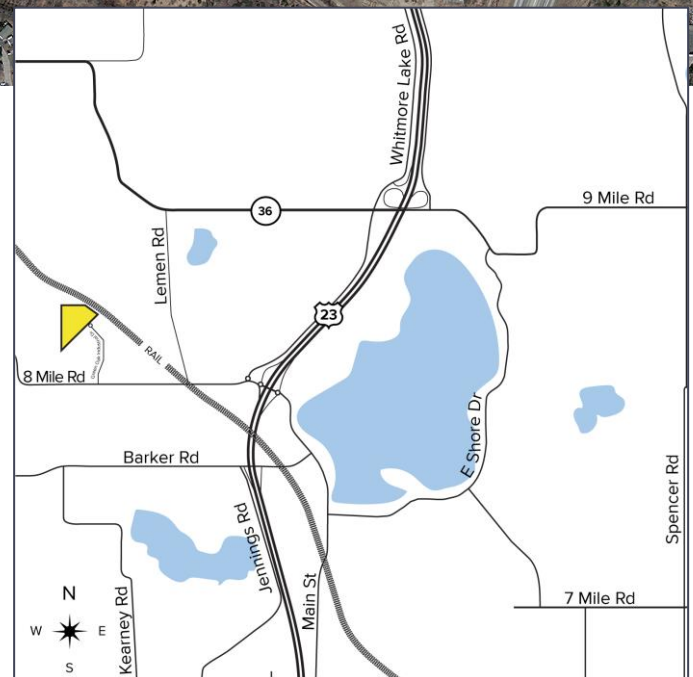


**SIGNATURE
ASSOCIATES**
KNOW SIGNATURE | KNOW RESULTS



PROPERTY FEATURES

- 36.67 acres fully developed
- 20,000 – 350,000 square foot build-to-suit for sale or lease
- Outside storage permitted
- Immediate access to US-23 between Ann Arbor and Brighton
- Tax abatement available



For more information, please contact:

JIM MONTGOMERY
(248) 359 0614
jmontgomery@signatureassociates.com

SIGNATURE ASSOCIATES
One Towne Square, Suite 1200
Southfield, MI 48076
www.signatureassociates.com

Green Oak Industrial Drive – Brighton, Michigan

Build-to-Suit For Sale or Lease

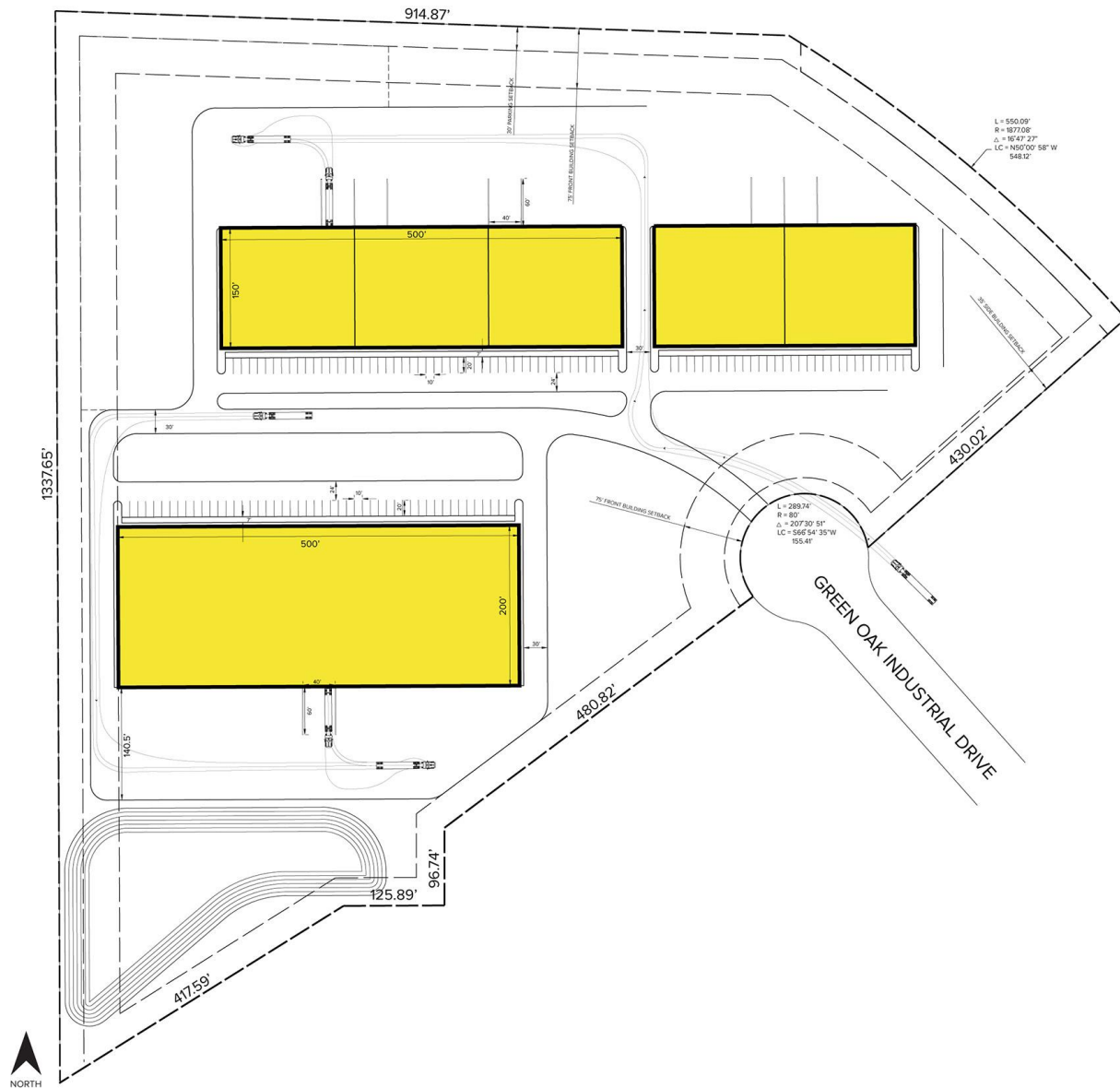
20,000 –
350,000
Square Feet /
36.67
Acres

DEMOGRAPHICS

	POPULATION	MED. HH INCOME
1 MILE	2,250	\$56,276
3 MILE	14,458	\$89,754
5 MILE	33,851	\$109,648

TRAFFIC COUNTS (TWO-WAY)

64,444	US-23 N. of 8 Mile Rd.
62,923	US-23 S. of 8 Mile Rd.
6,900	8 Mile Rd. W. of US-23
7,225	9 Mile Rd. E. of US-23



For more information, please contact:

JIM MONTGOMERY
(248) 359 0614
jmontgomery@signatureassociates.com

SIGNATURE ASSOCIATES
One Towne Square, Suite 1200
Southfield, MI 48076
www.signatureassociates.com