

REQCE<sup>SM</sup>

# 56 E 11th St

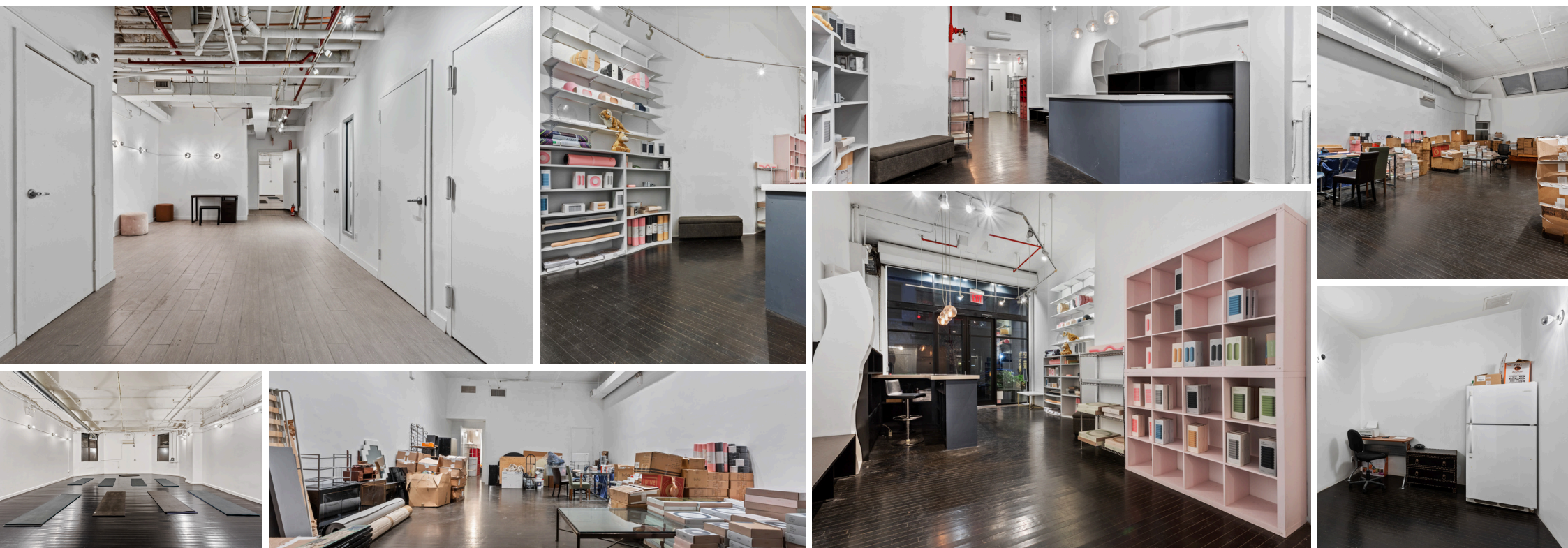
## Retail Space for Lease | Greenwich Village

This turn-key retail space is tailor-made for a business seeking to make a statement in a dynamic community. With its strategic location, thoughtful design, and proximity to both Union Square and Washington Square Park, 56 E 11th St presents a rare opportunity for your brand to thrive in one of the most sought-after neighborhoods in the city. The property features a well-designed layout, including a coveted full lower-level studio space that adds a touch of flexibility to the opportunity. This additional level provides versatility, whether you choose to create a private office, showcase exclusive merchandise, or design an inviting lounge area.

High Ceilings | Natural Light | Shower Facilities | Hardwood Floors

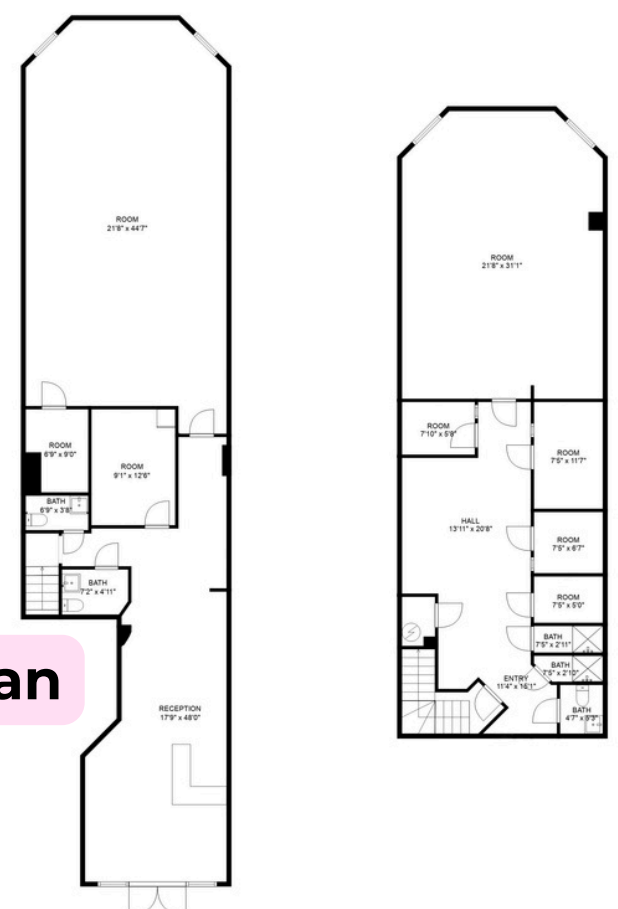


### Ground Level | 2,330 SF



A Modernized & Beautiful Retail Space with Hard Wood Floors, High Ceilings, and an Additional 1,500 SF Finished Lower-Level Space. New Façade with a Floor to Ceiling glass window and 20 Ft of Frontage. Seize the chance to establish your presence in this iconic neighborhood and captivate an upscale demographic that appreciates the intersection of style, culture, and innovation.

### Floor Plan



TERM	RENTAL RATE	SPACE USE	CONDITION	AVAILABILITY
Negotiable	Upon Request	Retail	Full Build-Out	Now

Sam Hamway | ☎ (917) 270-5120 | ✉ sam.hamway@reqce.com  
Benjamin Schanzer | ☎ (914) 364-3628 | ✉ benjamin.schanzer@reqce.com

See Listing

