



NEWMARK

  
PURPLE  
BRANDS

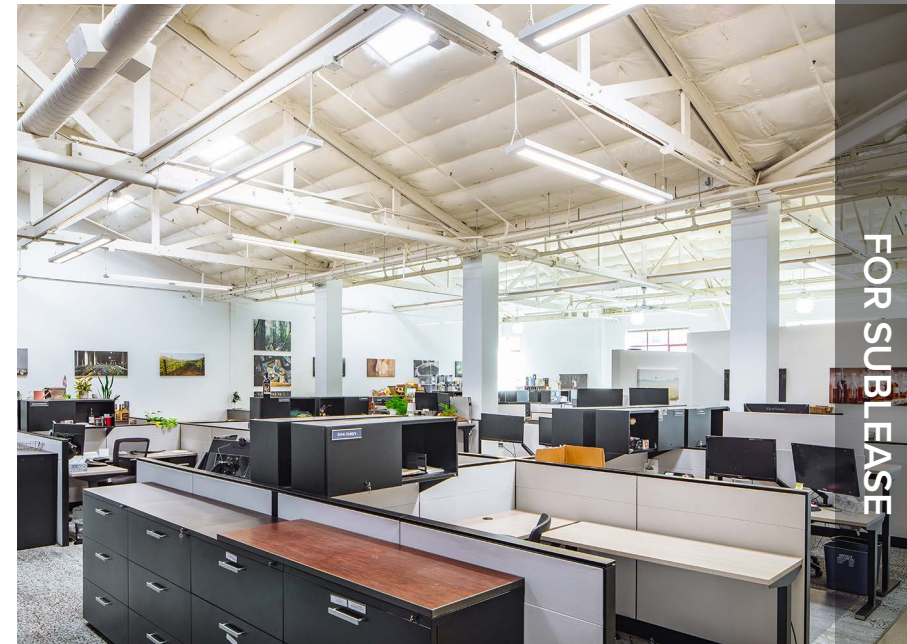


## FLOOR PLAN

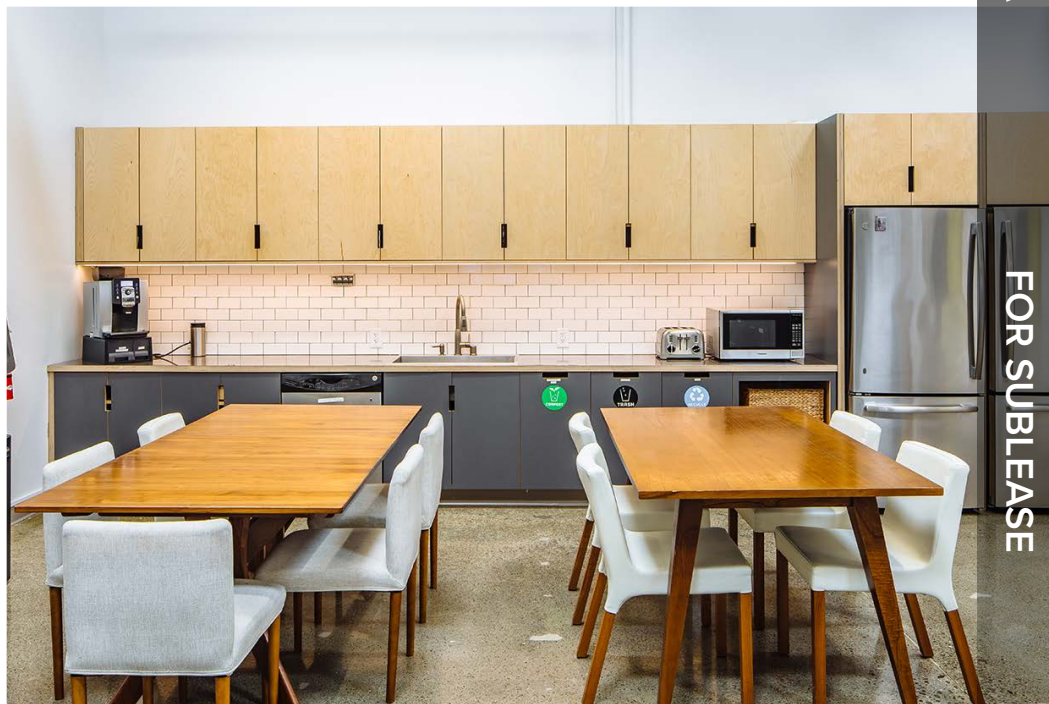
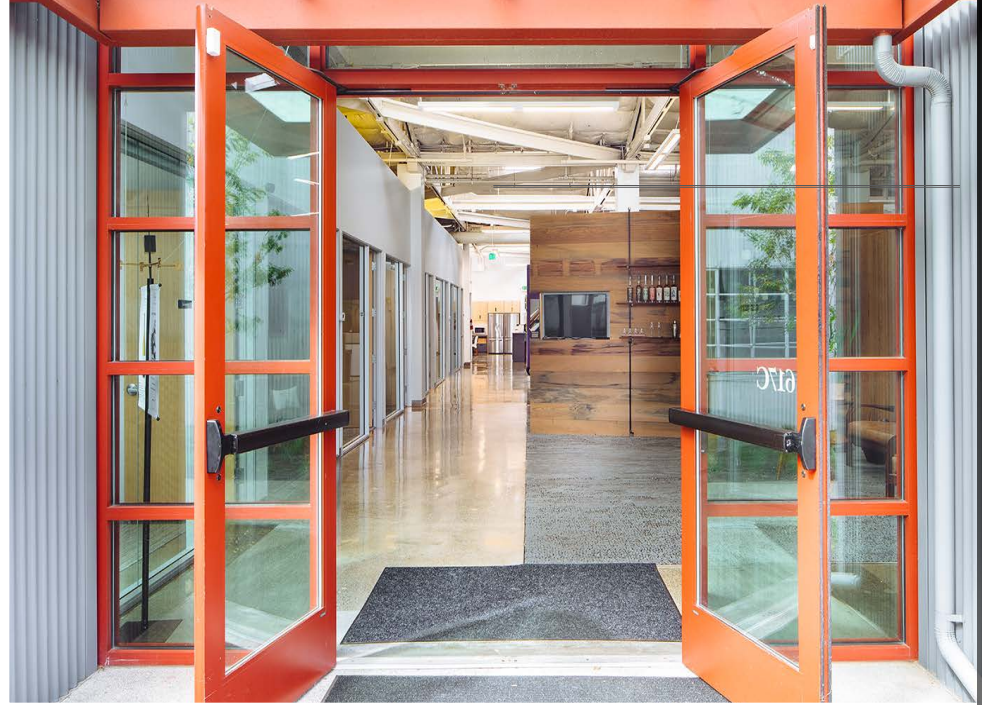


## SPECIFICATIONS

- ±7,900 SF Sublease in Foundry Wharf
- Asking \$1.90 FSG (\$15,000/mo) includes Water / Trash, Subtenant pays PG&E, Janitorial and Wifi
- Furnished / Plug & Play with High-End, Custom FF&E
- 8 Offices, 2 Conference Rooms, Kitchen, Storage, Phone, IT
- Term through June 2028







617 2ND STREET | PETALUMA | CA

FOR SUBLEASE

NEWMARK

  
PURPLE  
BRANDS





**SHANE ZUVELLA**  
415-526-7677  
shane.zuvella@nmrk.com  
CA RE LIC #02125003

**HADEN ONGARO**  
415-526-7649  
haden.ongaro@nmrk.com  
CA RE LIC #00916960

**TOM POSER**  
415-526-7651  
tom.poser@nmrk.com  
CA RE LIC #01475459

**NEWMARK**



1101 Fifth Avenue, Suite 370, San Rafael, CA 94901 415-526-7676

[nmrk.com](https://nmrk.com)

The distributor of this communication is performing acts for which a real estate license is required. The information contained herein has been obtained from sources deemed reliable but has not been verified and no guarantee, warranty or representation, either express or implied, is made with respect to such information. Terms of sale or lease and availability are subject to change or withdrawal without notice. Last updated: December 1, 2025 12:07 PM