



LOWER MAIN STREET SUB-LEASE OPPORTUNITY

OLD TOWN 890 MAIN STREET, SUITE 5-103 | PARK CITY, UTAH 84060

\$43.70 / SF NNN

KATIE WILKING CCIM, MRED
435 640-4964
katie@wswcommercial.com

JILL SNYDER
435 671-0793
jill@wswcommercial.com

CHELSEA WALL
435 671-3541
chelsea@wswcommercial.com

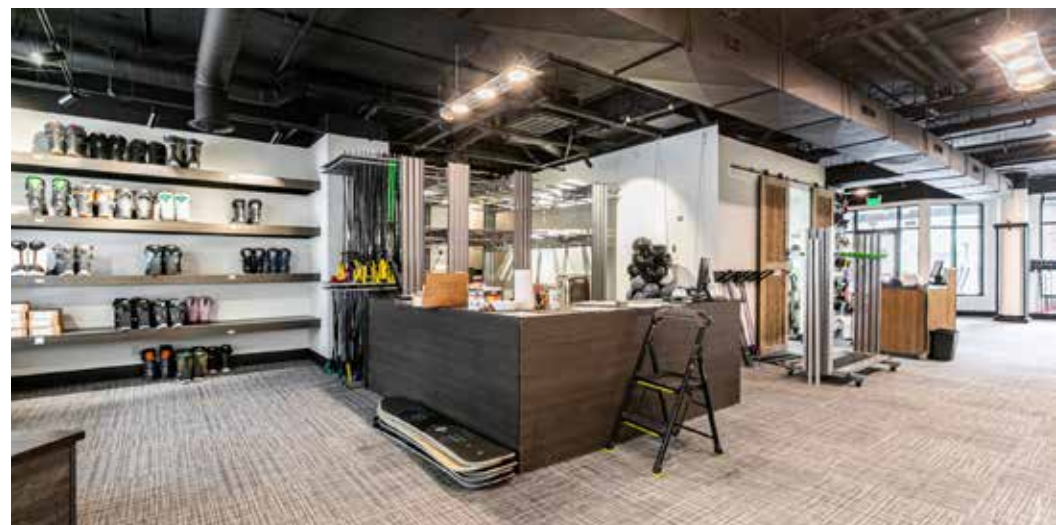
**BERKSHIRE
HATHAWAY** | UTAH
HOMESERVICES | PROPERTIES

COMMERCIAL DIVISION

© 2024 BHH Affiliates, LLC. An independently owned and operated franchisee of BHH Affiliates, LLC. Berkshire Hathaway HomeServices and the Berkshire Hathaway HomeServices symbol are registered service marks of Columbia Insurance Company, a Berkshire Hathaway affiliate. Information not verified or guaranteed. Berkshire Hathaway HomeServices and/or its representatives do not warrant or guarantee this information. Information herein was provided by Owner/Seller. Lessee/Purchaser is responsible to confirm any information considered a factor in a decision to lease or purchase.

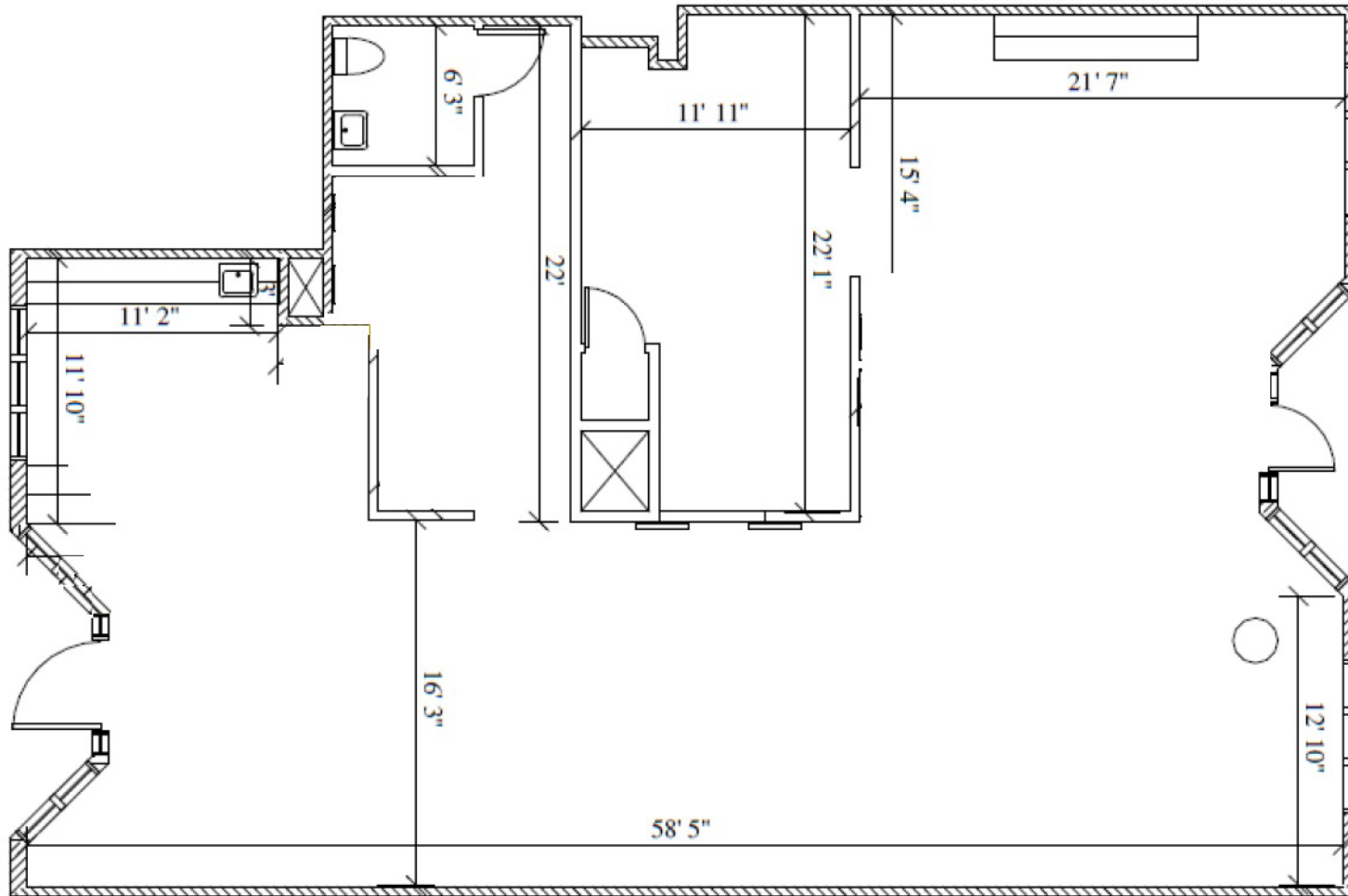
PROPERTY PHOTOS

OLD TOWN 890 MAIN STREET, SUITE 5-103 | PARK CITY, UTAH 84060



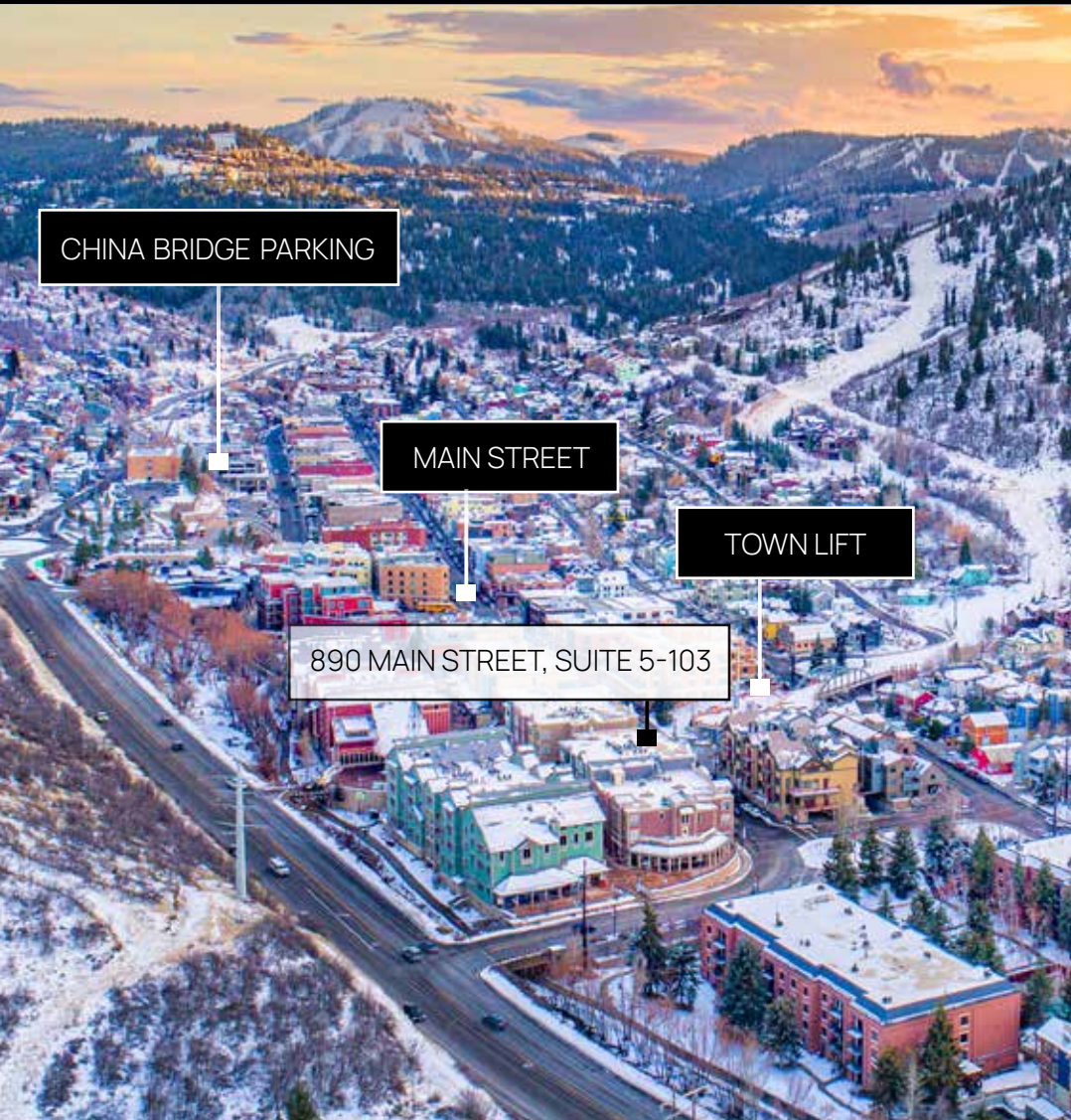
FLOORPLANS

OLD TOWN 890 MAIN STREET, SUITE 5-103 | PARK CITY, UTAH 84060



LOCATION

OLD TOWN 890 MAIN STREET, SUITE 5-103 | PARK CITY, UTAH 84060





OLD TOWN

890 MAIN STREET, SUITE 5-103
PARK CITY, UTAH 84060

- 2,100 Square Feet
- Below market rent
- Bright, open floor plan
- Dual entrance and signage on Main Street and Marriott Plaza
- Close to parking, bus stop, restaurants and total walk-ability
- Current lease ends July 31, 2031

i

BHHSUTAH.COM

KATIE WILKING CCIM, MRED
435 640-4964
katie@swcommercial.com

JILL SNYDER
435 671-0793
jill@swcommercial.com

CHELSEA WALL
435 671-3541
chelsea@swcommercial.com

**BERKSHIRE
HATHAWAY** | UTAH
HOMESERVICES | PROPERTIES

COMMERCIAL DIVISION