

# INDUSTRIAL SPACE FOR SUBLEASE

±11,370 SQUARE FEET

14751-B FRANKLIN AVENUE, TUSTIN, CA



## PROPERTY FEATURES

- ±11,370 SF End Unit
- ±2,700 SF of Heated/Air Conditioned Office
- ±8,600 SF Warehouse
- 400 amps of 120/208 volt, 3 phase power
- Truck Well
- Three 12'x14' Truck Doors
- 16' Clearance
- Sky Lights
- Fully Sprinklered
- Sublease through July 31, 2029



## CONTACT

**JORDAN KEMPER**

949-773-5668

[jkemper@lee-associates.com](mailto:jkemper@lee-associates.com)

DRE # 02228841

**MATT CHRISTENSEN**

949.724.4705

[mchristensen@lee-associates.com](mailto:mchristensen@lee-associates.com)

DRE # 01848147

**LEE & ASSOCIATES**  
COMMERCIAL REAL ESTATE SERVICES  
NEWPORT BEACH

DISCLAIMER: The information contained herein has been obtained from the property owner or other third party and is provided to you without verification as to accuracy. We (Lee & Associates, its brokers, employees, agents, principals, officers, directors and affiliates) make no warranty or representation regarding the information, property, or transaction. You and your attorneys, advisors and consultants should conduct your own investigation of the property and transaction.

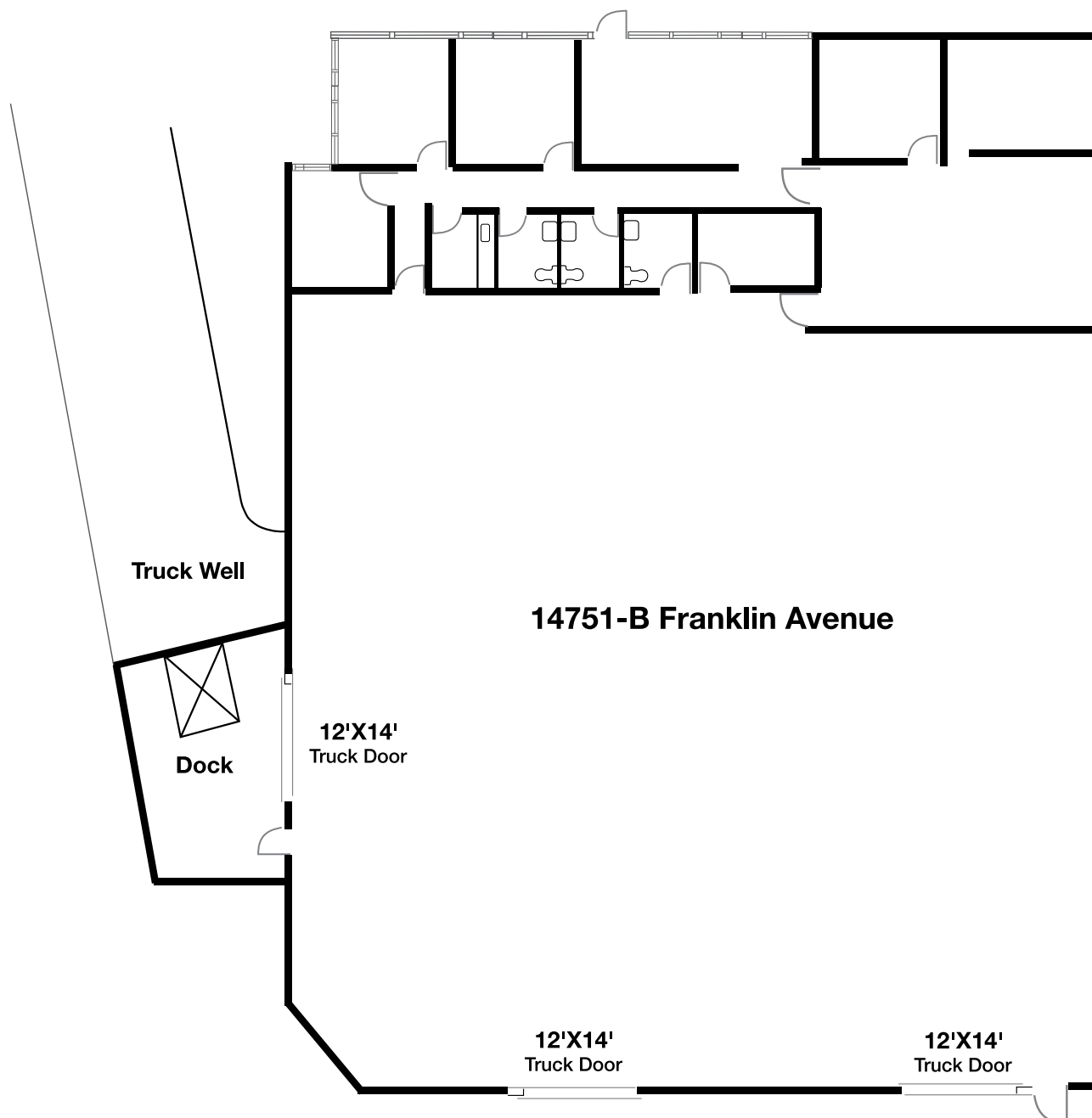
# INDUSTRIAL SPACE FOR SUBLEASE

±11,370 SQUARE FEET

14751-B FRANKLIN AVENUE, TUSTIN, CA



## SITE PLAN



### CONTACT

**JORDAN KEMPER**

949-773-5668

[jkemper@lee-associates.com](mailto:jkemper@lee-associates.com)

DRE # 02228841

**MATT CHRISTENSEN**

949.724.4705

[mchristensen@lee-associates.com](mailto:mchristensen@lee-associates.com)

DRE # 01848147

**LEE &  
ASSOCIATES**  
COMMERCIAL REAL ESTATE SERVICES  
NEWPORT BEACH

DISCLAIMER: The information contained herein has been obtained from the property owner or other third party and is provided to you without verification as to accuracy. We (Lee & Associates, its brokers, employees, agents, principals, officers, directors and affiliates) make no warranty or representation regarding the information, property, or transaction. You and your attorneys, advisors and consultants should conduct your own investigation of the property and transaction.