



2060, 2070 & 2080 LIDELL DRIVE ATLANTA GA 30324

INDUSTRIAL BUILDINGS AND OUTSIDE STORAGE SPACE FOR LEASE

- Zoning I-1 – Light Industrial
- 2060 Liddell Drive: ±2,310 SF warehouse building with a small office, bathroom, drive-in door, and fenced parking
- 2070 Liddell Drive: ±10,000 SF warehouse building with a dock-high door, offices, bathrooms and fenced parking
- 2080 Liddell Drive: 1.04-acre site, fenced for outside storage and/or parking

Owner prefers to lease at least one of the buildings with the outside storage site but will consider all scenarios.

Contact Broker for lease rates.



JOHN DEYONKER

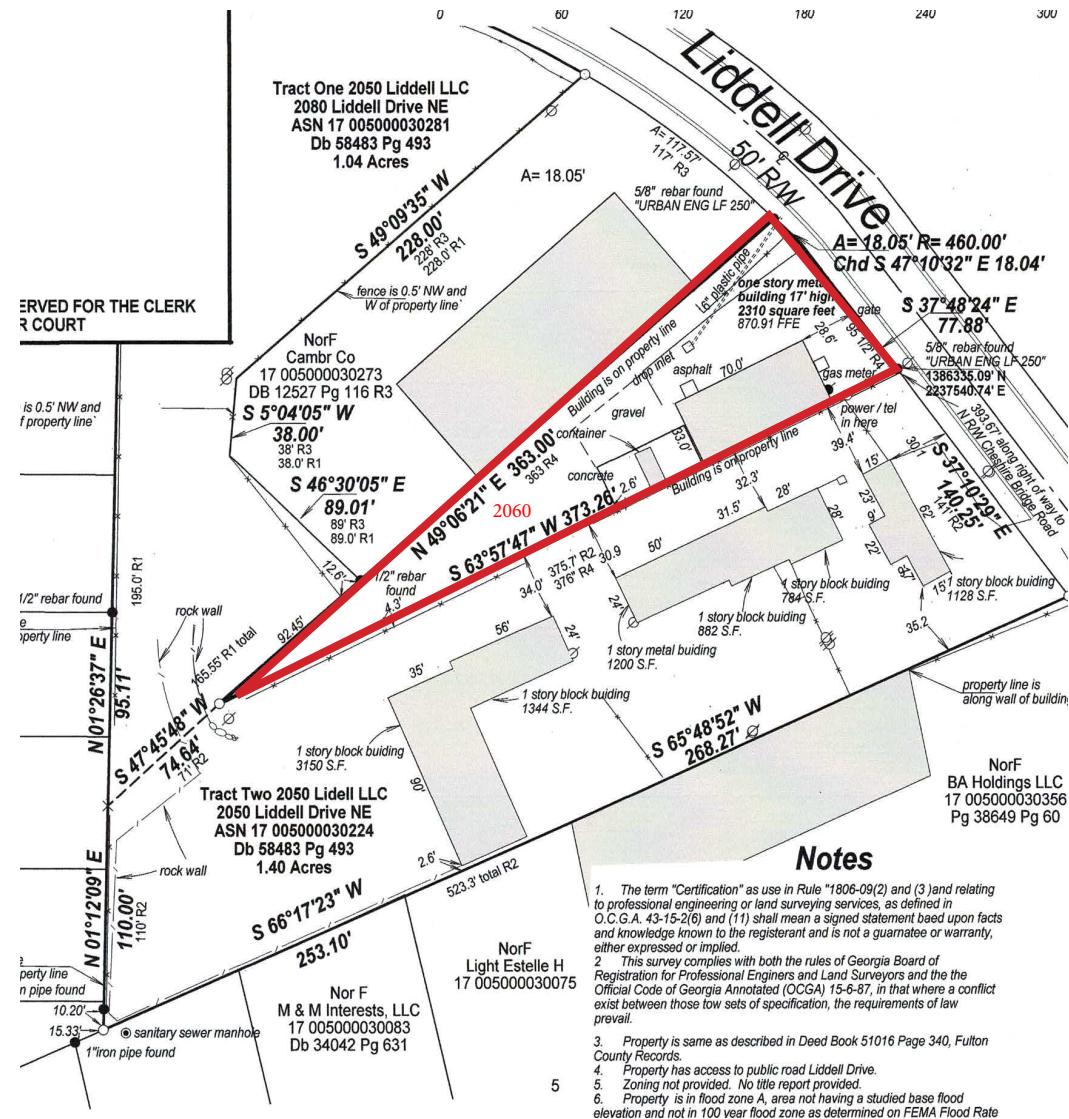
President, Land & Development

JohnD@BullRealty.com

404-876-1640 x142

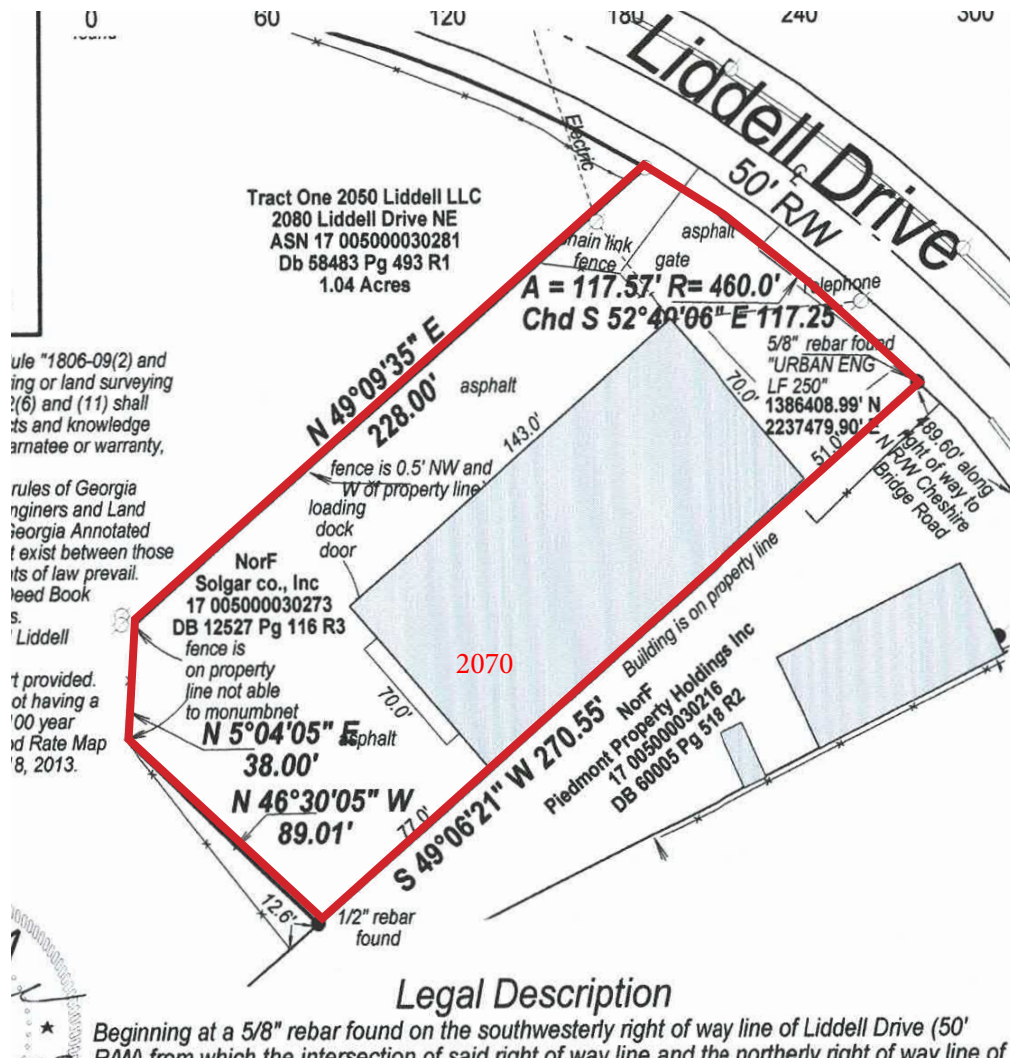


2060 LIDDELL DRIVE



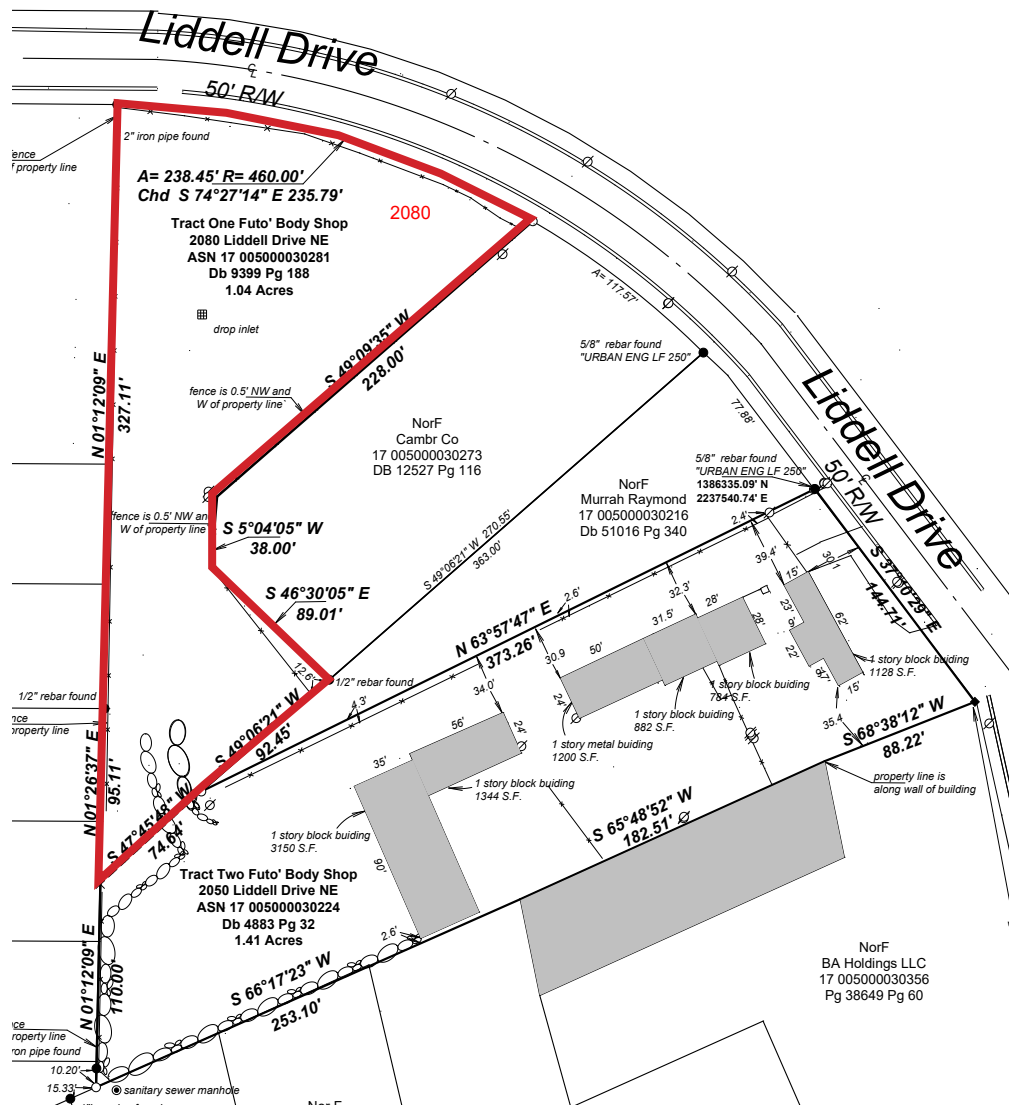
JOHN DEYONKER
President, Land & Development
JohnD@BullRealty.com
404-876-1640 x142

2070 LIDDELL DRIVE



JOHN DEYONKER
 President, Land & Development
 JohnD@BullRealty.com
 404-876-1640 x142

2080 LIDDELL DRIVE



JOHN DEYONKER
 President, Land & Development
 JohnD@BullRealty.com
 404-876-1640 x142



JOHN DEYONKER
President, Land & Development
JohnD@BullRealty.com
404-876-1640 x142

