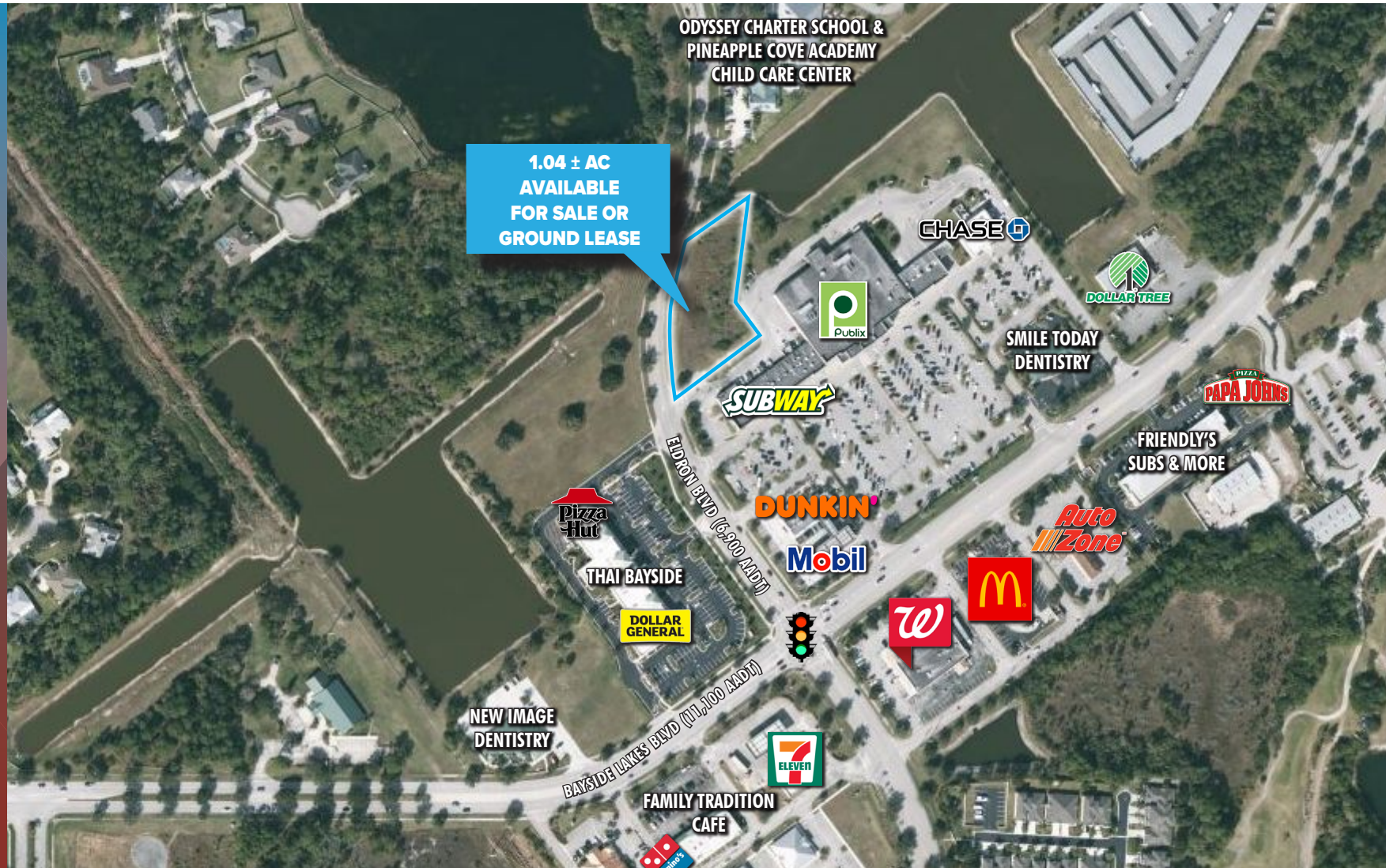


AVAILABLE

# 1.04 ± AC | BAYSIDE LAKES FOR SALE OR GROUND LEASE

1805 Eldron Boulevard SE, Palm Bay, FL 32909



## PROPERTY HIGHLIGHTS

- **Outparcel For Sale or Ground Lease**
- **Bayside Lakes Commercial Center**
- **Land Size: 1.04± AC**
- **List Price: \$600,000**
- **Zoning: PUD**
- **Traffic Counts:**

Eldron Blvd SE: 6,900 AADT  
Bayside Lakes Blvd SE: 11,100 AADT

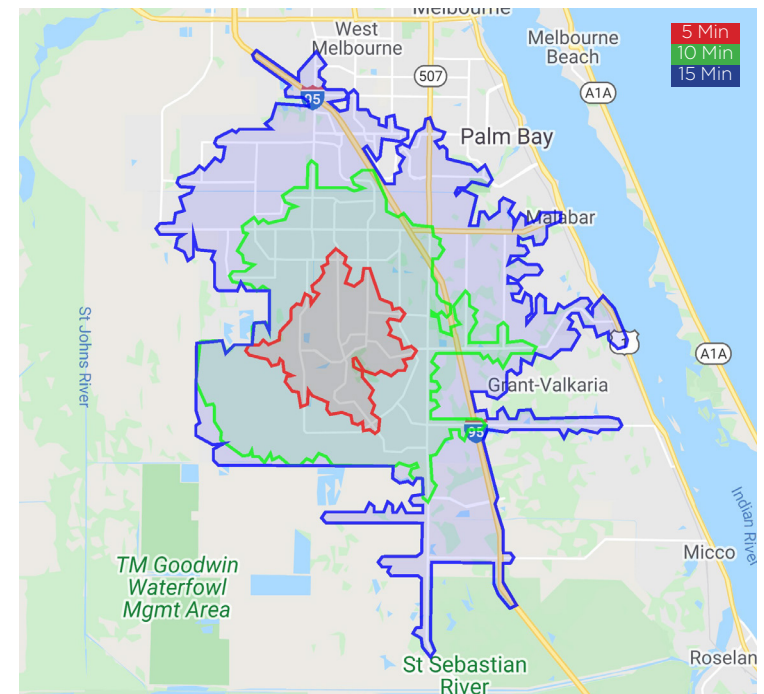
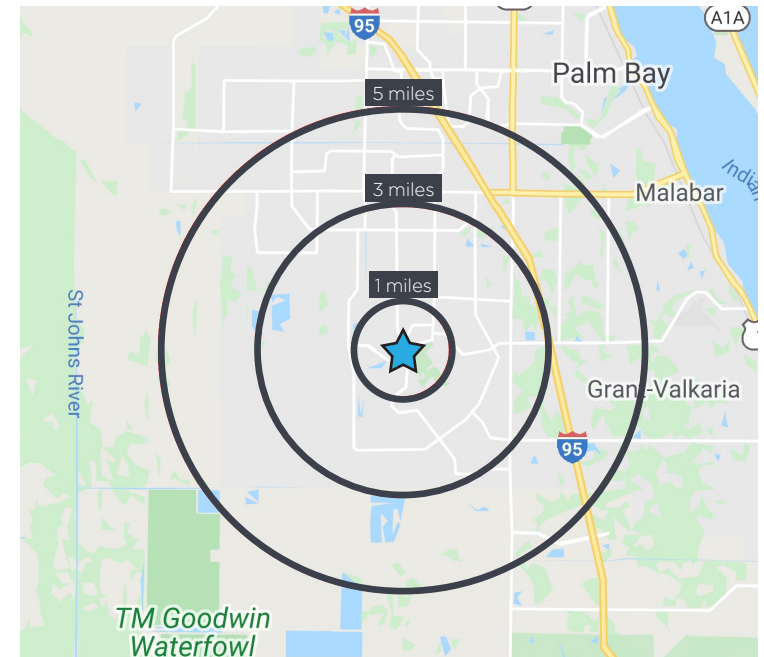
### • Location

Located in Bayside Lakes Commercial Center, PH 2. Publix anchored center with tenants including Subway, Chase Bank, H&R Block, Beef O'Bradys, Mobil Gas on outparcel, and Dollar Tree next door.

Property is adjacent to Pineapple Cove Academy Child Care Center and Odyssey Charter School (elementary school).

## 2020 ESTIMATED DEMOGRAPHICS

	1 mile	3 mile	5 mile	5 min	10 min	15 min
Population	6,825	39,346	75,594	18,381	57,148	103,816
Population Growth (2010 - 2020)	1.50%	1.66%	1.50%	1.97%	1.53%	1.58%
Daytime Population	5,485	29,180	61,926	13,847	46,673	87,104
Households	2,490	13,829	27,359	6,510	20,439	38,130
Median Household Income	\$68,310	\$57,343	\$55,665	\$61,004	\$54,461	\$55,953
Average Household Income	\$78,956	\$70,576	\$70,075	\$73,093	\$67,289	\$70,394



MACRO AERIAL | RETAIL



# *1.04± AC | BAYSIDE LAKES FOR SALE OR GROUND LEASE*

---

## PLEASE CONTACT:

### **Colette Wood**

Associate  
+1 321 960 9202  
[colette.wood@cbre.com](mailto:colette.wood@cbre.com)

### **Martha Scholz**

Associate  
+1 321 890 7002  
[martha.scholz@cbre.com](mailto:martha.scholz@cbre.com)

© 2021 CBRE, Inc. All rights reserved. This information has been obtained from sources believed reliable, but has not been verified for accuracy or completeness. You should conduct a careful, independent investigation of the property and verify all information. Any reliance on this information is solely at your own risk. CBRE and the CBRE logo are service marks of CBRE, Inc. All other marks displayed on this document are the property of their respective owners, and the use of such logos does not imply any affiliation with or endorsement of CBRE. Photos herein are the property of their respective owners. Use of these images without the express written consent of the owner is prohibited.

1805 Eldron Boulevard SE, Palm Bay, FL 32909