

FOR LEASE

Insite

COMMERCIAL
REAL ESTATE



- REGAL
- Publix
- Bar Louie
- LOFT
- REI
- STARBUCKS
- TRADER JOE'S
- Michael's
- petco
- HomeGoods
- Marshall's
- ROSS
- DSW
- LA FITNESS
- BLAZE PIZZA
- ULTA
- J.S.A. BANK
- RUTH'S CHRIS STEAK HOUSE
- CHASE
- CVS
- Wawa
- AVAILABLE
- Fleming's
- Hilton Garden Inn
- WELLS FARGO
- PNC BANK
- MILLER'S ALE HOUSE
- ANEJO COCINA MEXICANA
- WHOLE FOODS MARKET
- NORDSTROM rack

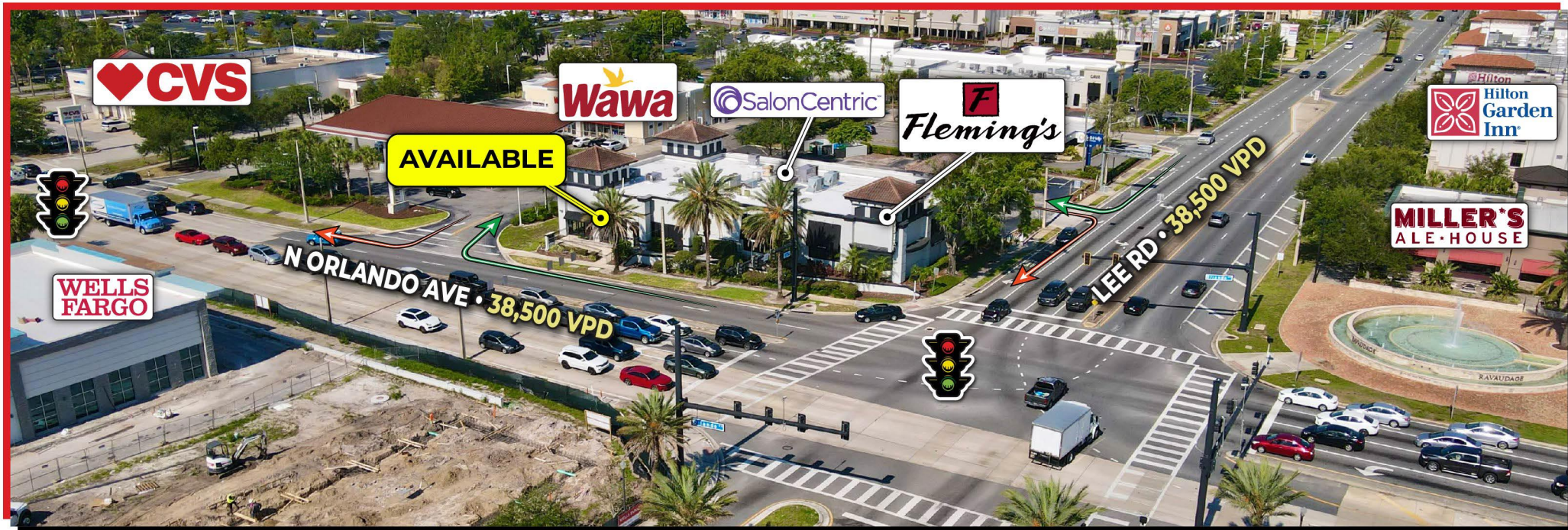


VILLAGE SHOPPES OF WINTER PARK

933 N ORLANDO AVE, WINTER PARK, FL 32789

ALEX BISBEE
407-864-6444



TIFFANY BROWN
772-475-9944



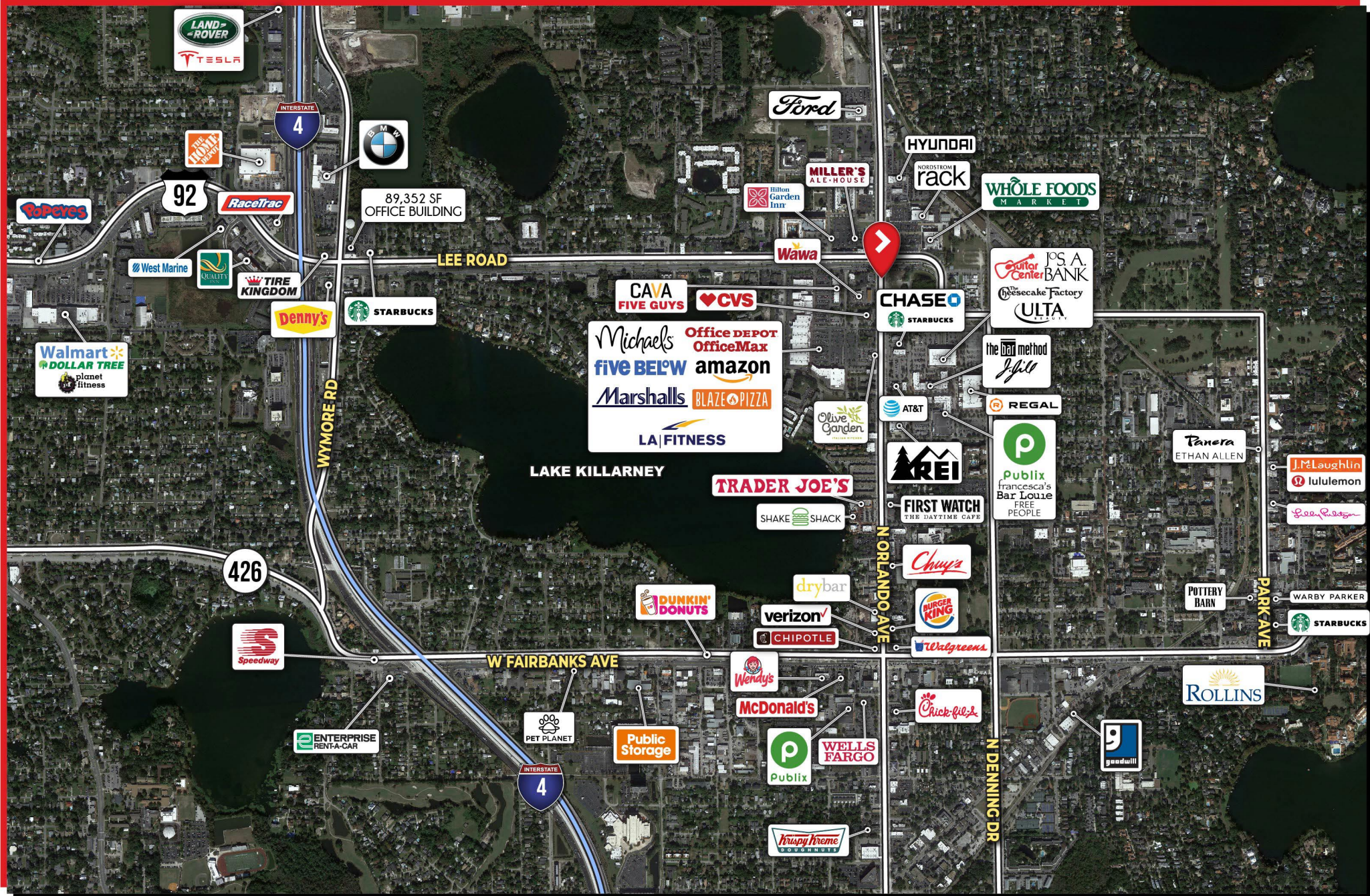
PROPERTY HIGHLIGHTS

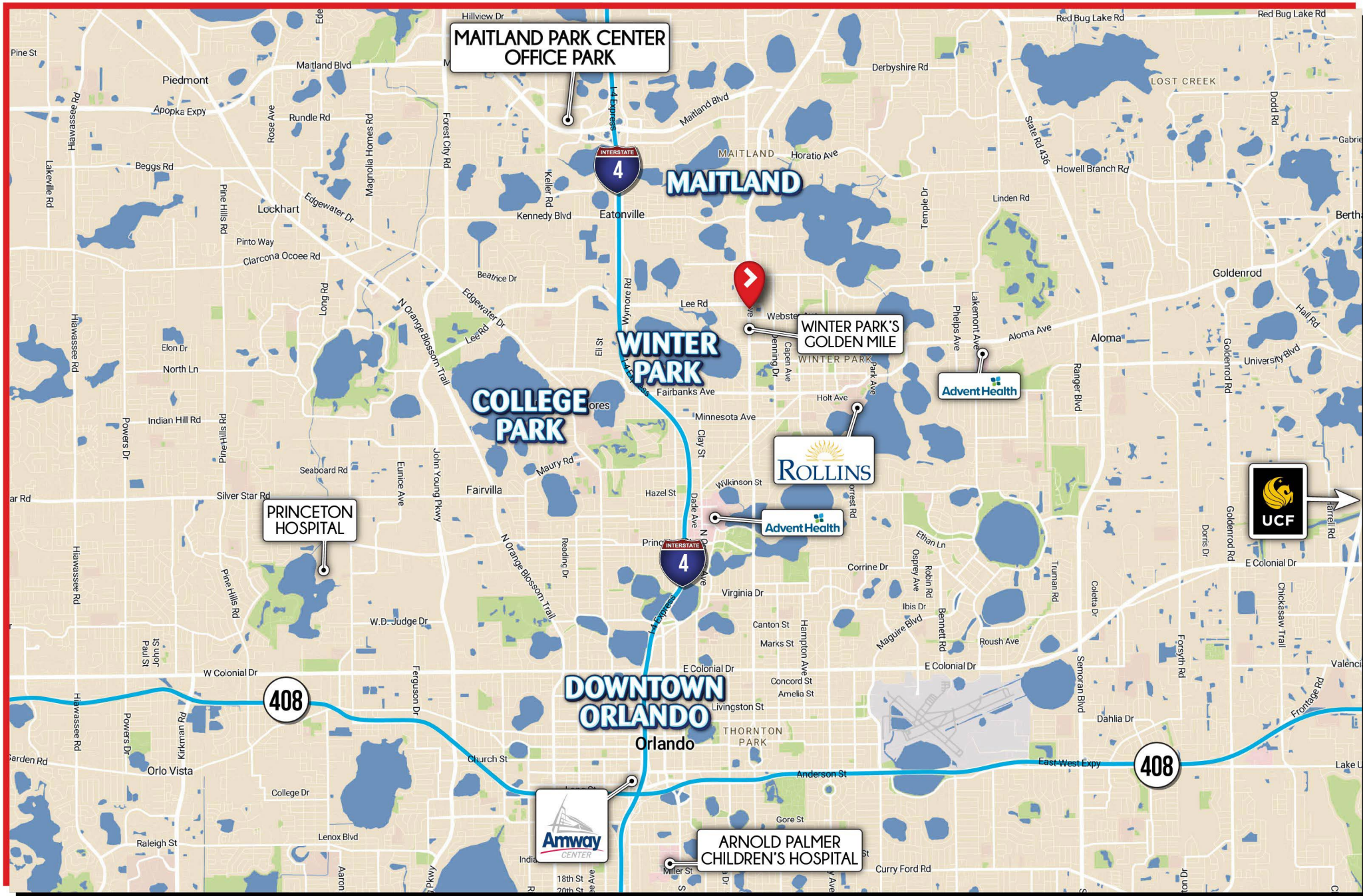
- **Coming Available: 1,460 SF end cap.**
- Prominent signage and frontage on N Orlando Ave (17-92); part of Winter Park's Golden Mile.
- Shadow anchored by Center of Winter Park (LA Fitness, Ross, HomeGoods, Marshalls, DSW) with cross access to Wawa.
- High traffic intersection with close proximity to I-4.

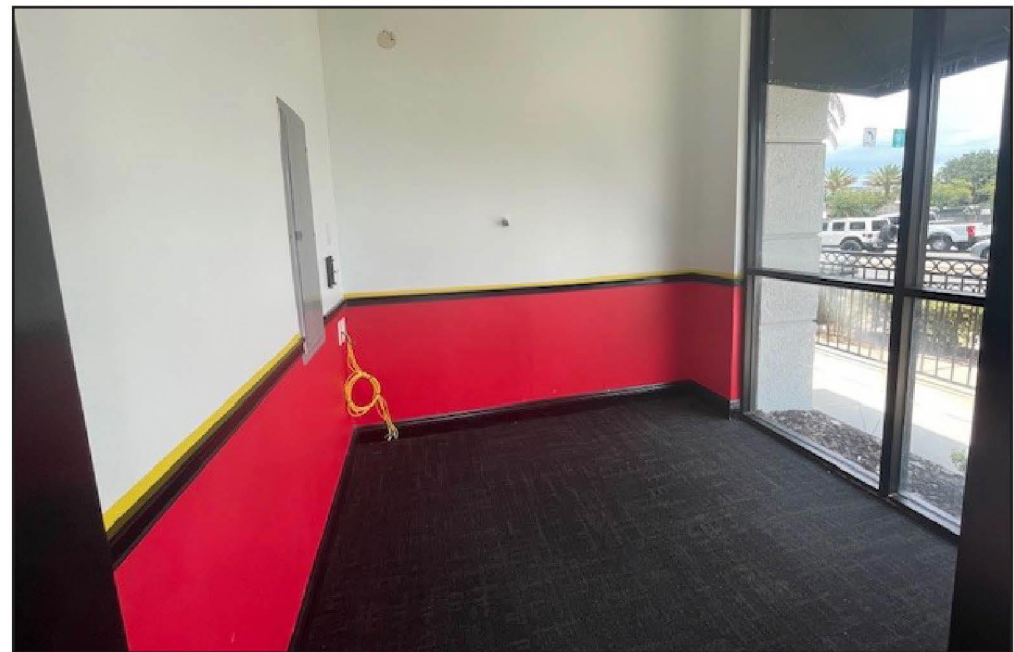
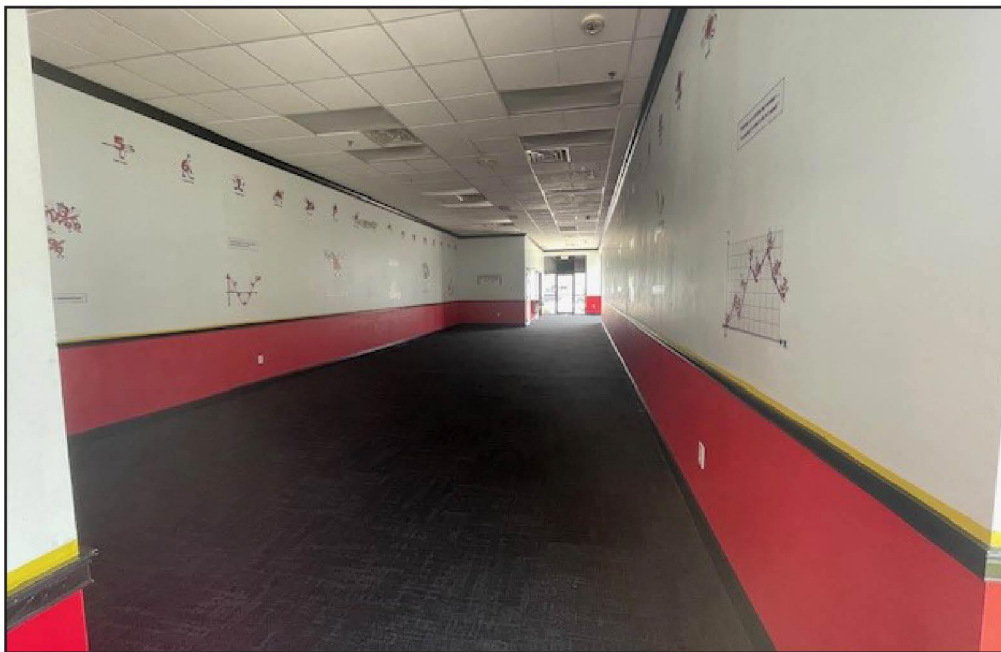
2023 DEMOGRAPHICS

	Population	1 Mile	10,177
		2 Mile	34,413
		3 Mile	83,528
.....			
	Average Household Income	1 Mile	\$133,314
		2 Mile	\$153,612
		3 Mile	\$147,770
.....			
	Employees	1 Mile	22,256
		2 Mile	46,600
		3 Mile	93,794









**FOR MORE
INFORMATION
PLEASE CONTACT**

ALEX BISBEE

407-864-6444

ABISBEE@INSITEREI.COM

TIFFANY BROWN

772-475-9944

TBROWN@INSITEREI.COM

