

AVAILABLE FOR LEASE

LOUDERMILK



LOGISTICS

INLIGHT
REAL ESTATE PARTNERS

STREAM



1000 Loudermilk Drive
Marietta, GA 30060



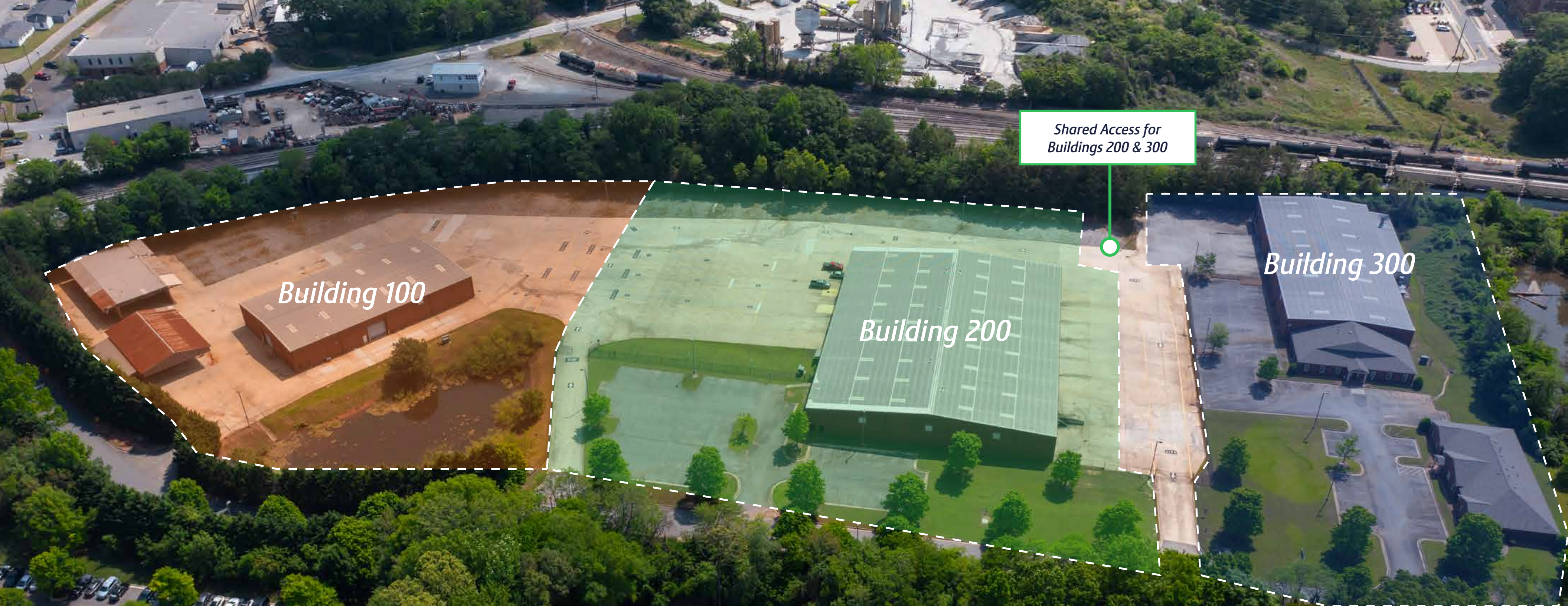
FLEXIBLE INDUSTRIAL STORAGE

1000 Loudermilk Dr, Marietta, GA 30060

Loudermilk Logistics offers a variety of outdoor storage, service, and warehousing capabilities to meet almost any industrial user's needs. The site can be subdivided into a variety of configurations to best meet tenants looking for distribution, trailer & equipment storage, and fleet maintenance. The property is located in Marietta, one of Atlanta's core infill submarkets. This submarket offers a large, high quality and diverse labor pool situated within an affluent neighborhood.

Availability Highlights

LOUDERMILK LOGISTICS OFFERINGS	BUILDING 100	BUILDING 200	BUILDING 300
ACREAGE	2.4	4.2	1.9
BUILDING SQUARE FOOTAGE	14,196	38,250	28,518
LOADING	7 Drive-In Doors	6 Drive-In Doors 2 Dock High	1 Drive-In Door 2 Dock High
OFFICE SQUARE FOOTAGE	500	1,000	8,607
CLEAR HEIGHT	26'	28'	26'
ZONING	Heavy Industrial		
SECURITY	Fully fenced and lit		
OUTDOOR STORAGE	Paved with concrete and gravel		



Building 100

Building 200

Building 300

*Shared Access for
Buildings 200 & 300*



BUILDING 100



Availability Highlights

ACREAGE	2.4
BUILDING SQUARE FOOTAGE	14,196
LOADING	7 Drive-In Doors
OFFICE SQUARE FOOTAGE	500
CLEAR HEIGHT	26'





BUILDING 200



Availability Highlights

ACREAGE	4.2
BUILDING SQUARE FOOTAGE	38,250
LOADING	6 Drive-In Doors 2 Dock High
OFFICE SQUARE FOOTAGE	1,000
CLEAR HEIGHT	28'



BUILDING 300



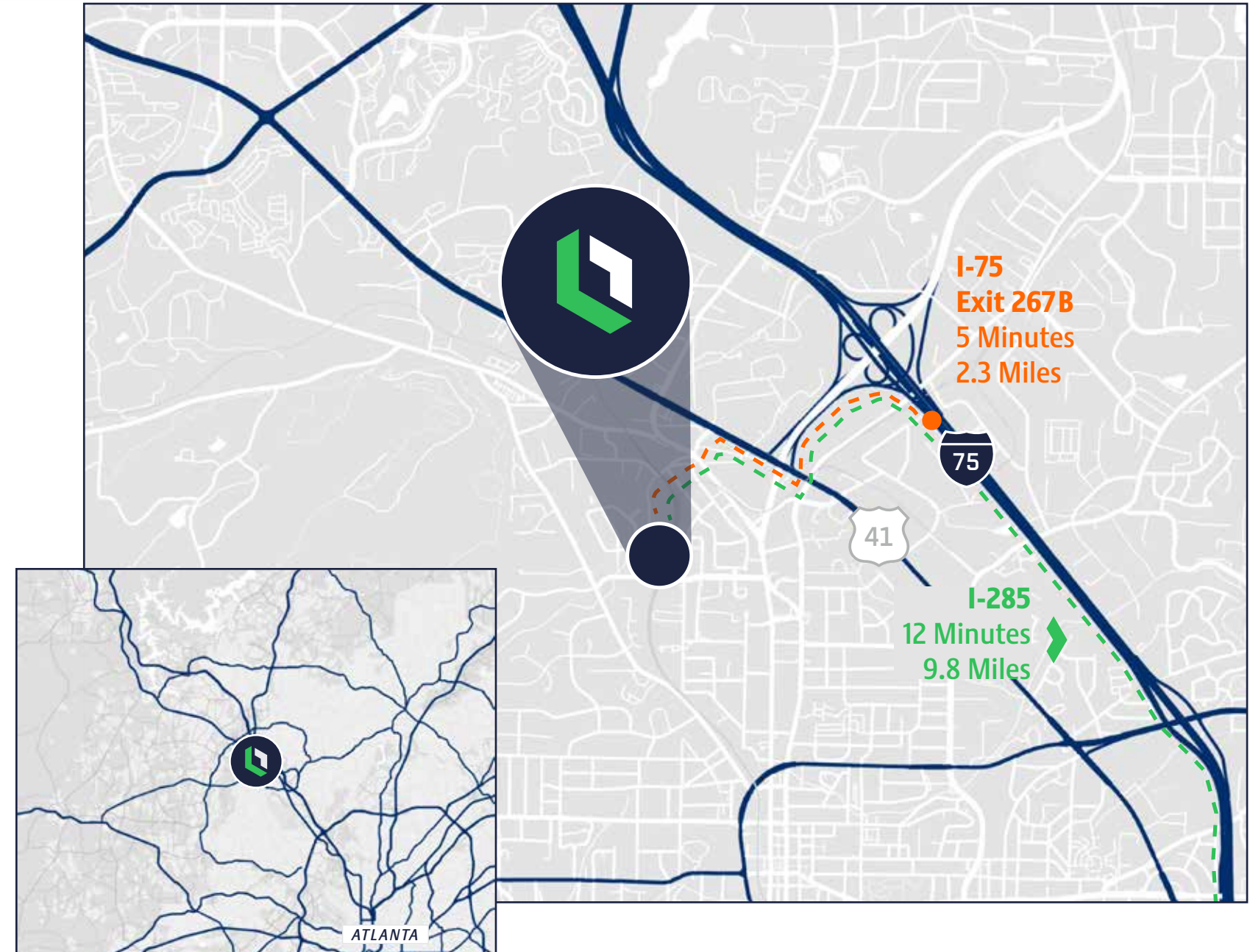
Availability Highlights

ACREAGE	1.9
BUILDING SQUARE FOOTAGE	28,518
LOADING	1 Drive-In Door 2 Dock High
OFFICE SQUARE FOOTAGE	8,607
CLEAR HEIGHT	26'



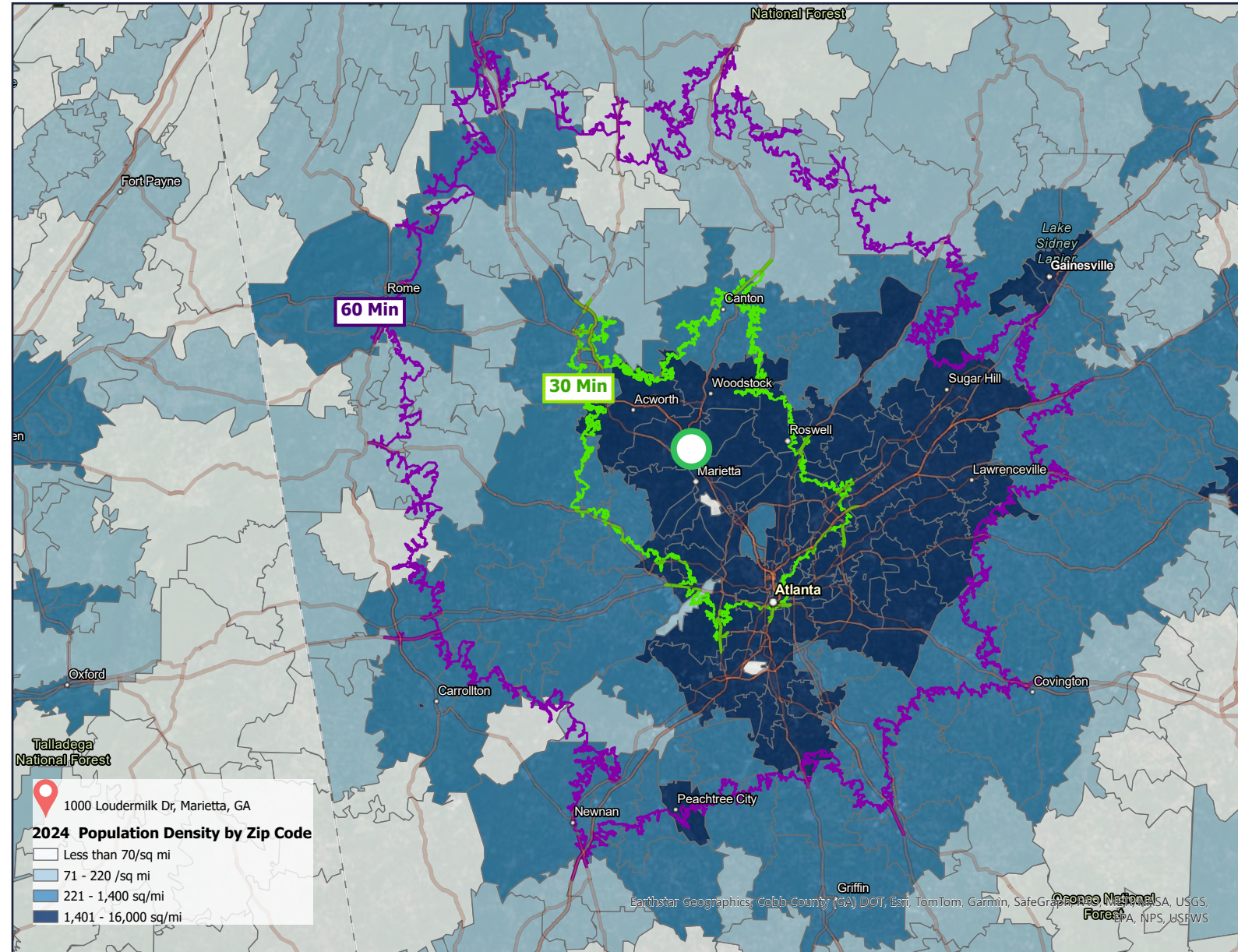


CONVENIENT ACCESS

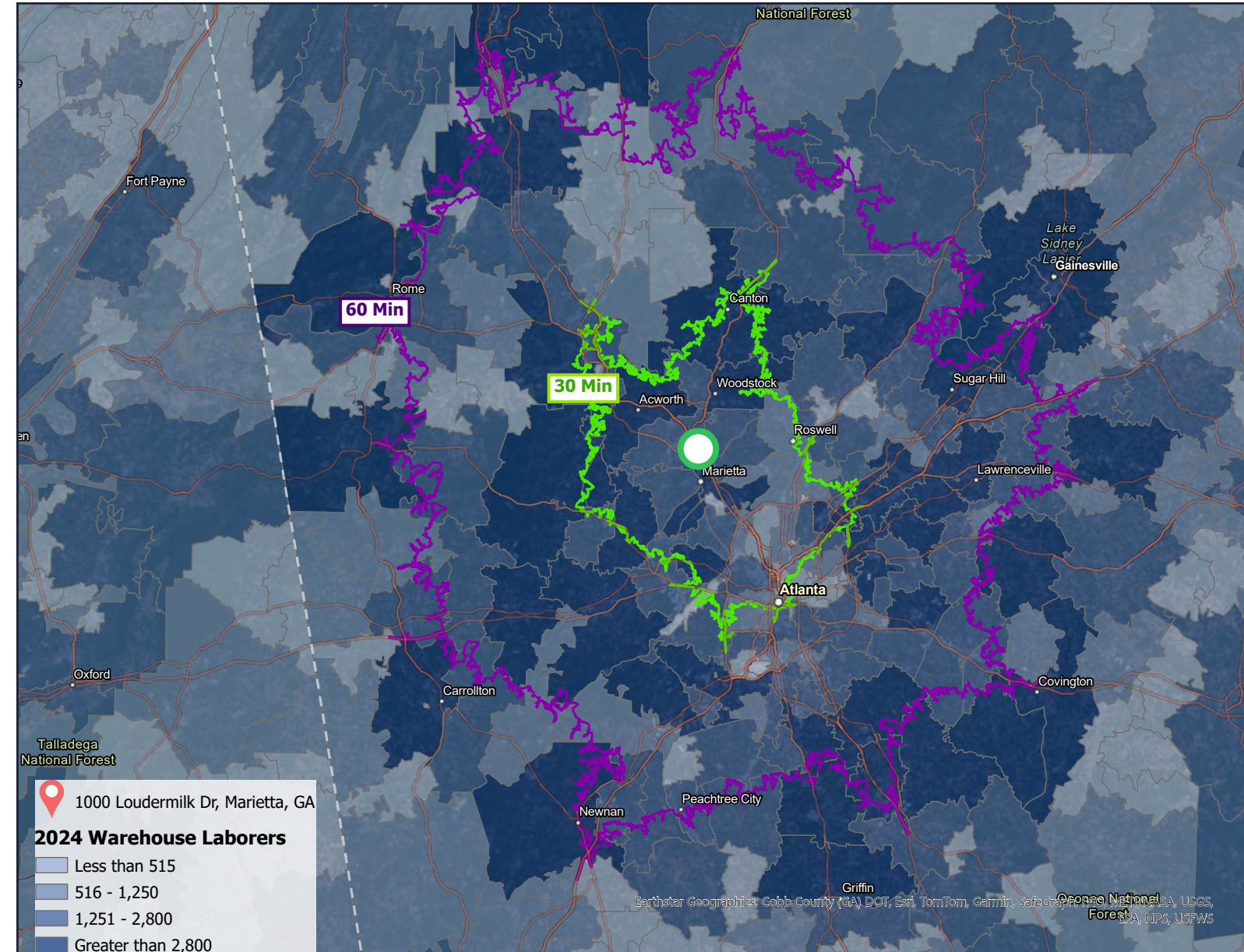




POPULATION DENSITY



STRONG WORKFORCE



For leasing information, please contact:

BEAU ACUFF, SIOR

beau.acuff@streamrealty.com

404.893.9833

NICK PEACHER, SIOR

nicholas.peacher@streamrealty.com

404.416.2328

