

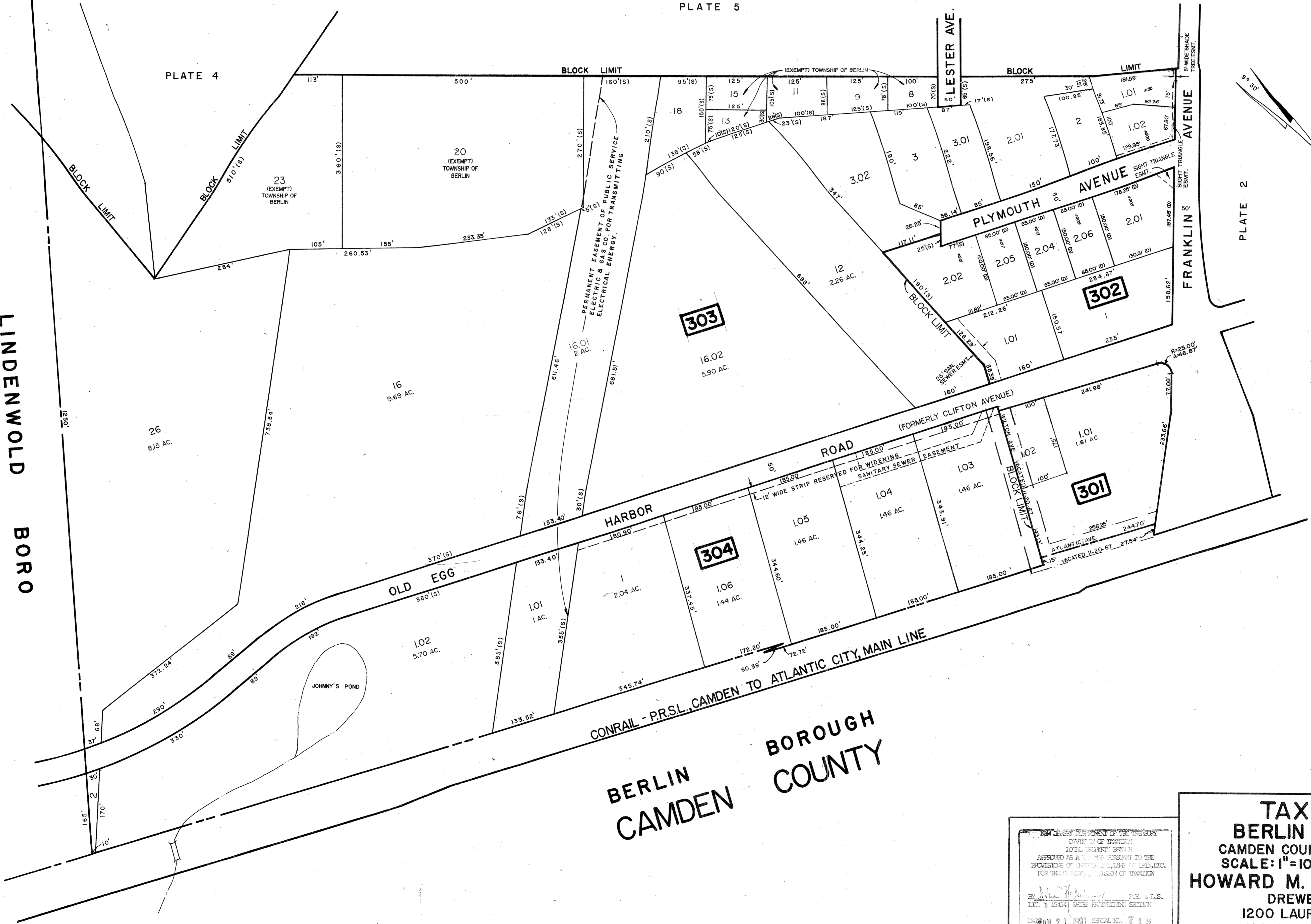
| REVISIONS | | |
|-----------|-----------------------|--------|
| DATE | NAME | NUMBER |
| 4/1/90 | HOWARD M. SCHOOR | 14551 |
| 4/1/97 | CHARLES J. RIEBEL JR. | 29286 |
| 1/18/99 | CHARLES J. RIEBEL JR. | 29286 |
| 1/7/00 | CHARLES J. RIEBEL JR. | 29286 |
| 7/1/01 | CHARLES J. RIEBEL JR. | 29286 |
| 12/5/01 | CHARLES J. RIEBEL JR. | 29286 |
| 3/24/05 | CHARLES J. RIEBEL JR. | 29286 |
| 8/1/05 | CHARLES J. RIEBEL JR. | 29286 |

LINDENWOLD BORO
CAMDEN COUNTY

PLATE 5

PLATE 4

PLATE 2



BERLIN CAMDEN BOROUGH COUNTY

NEW JERSEY DEPARTMENT OF THE TREASURY
DIVISION OF TAXATION
LOCAL GOVERNMENT MAPS
APPROVED AS A PUBLIC RECORD TO THE
PROVISIONS OF CHAPTER 125, TITLE 19, N.J.A.C.
FOR THE TOWNSHIP OF BERLIN

BY: *[Signature]* P.E. & L.S.
LIC. # 15494 CHIEF ENGINEERING SECTION

MAR 21 1991 SERIAL NO. 719

TAX MAP
BERLIN TOWNSHIP
CAMDEN COUNTY, NEW JERSEY
SCALE: 1"=100' OCTOBER 1, 1989
HOWARD M. SCHOOR, P.E.-L.S.
DREWES & LOWE
1200 LAUREL OAK ROAD
VOORHEES, NEW JERSEY