

Another Quality Institutionally Owned & Managed Asset By Rexford Industrial



± 32,050 SF AVAILABLE FOR LEASE

5002 LINDSAY COURT CHINO | CALIFORNIA 91710

AVAILABLE NOW | PRIME CHINO LOCATION | DEEP TRUCK COURT



MACLEOD & CO.



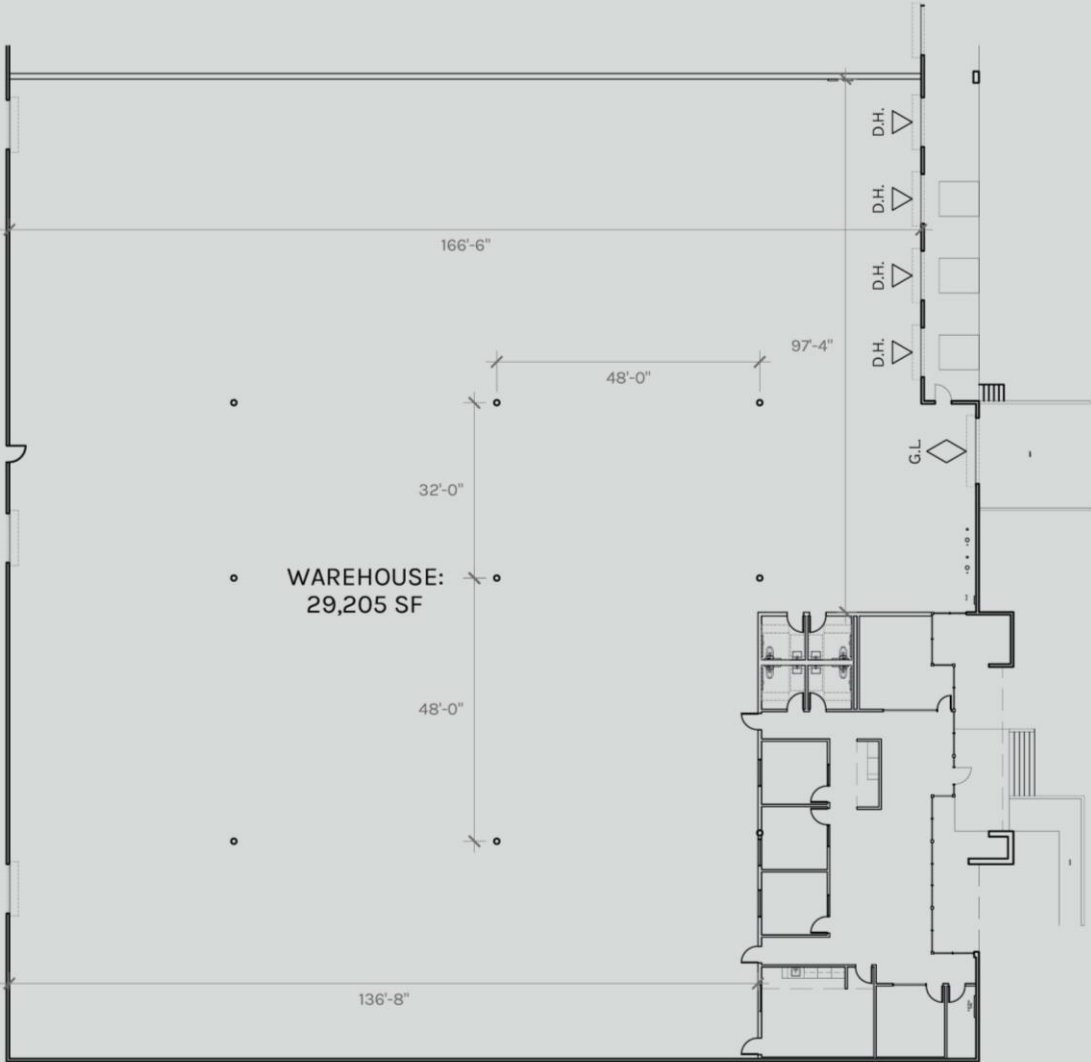
**Rexford  
Industrial**



- ± 29,205 SF of Warehouse Available
- ± 2,845 SF Office
- Clear Height ± 22' – 24'
- 4 Dock High Doors
- 1 Ground Level Door with Ramp
- .60/3,000 GPM Sprinkler System
- ± 139' Truck Court
- 400 Amps, 227/480V
- Approximately 3 Miles to CA – 60
- Newly Renovated

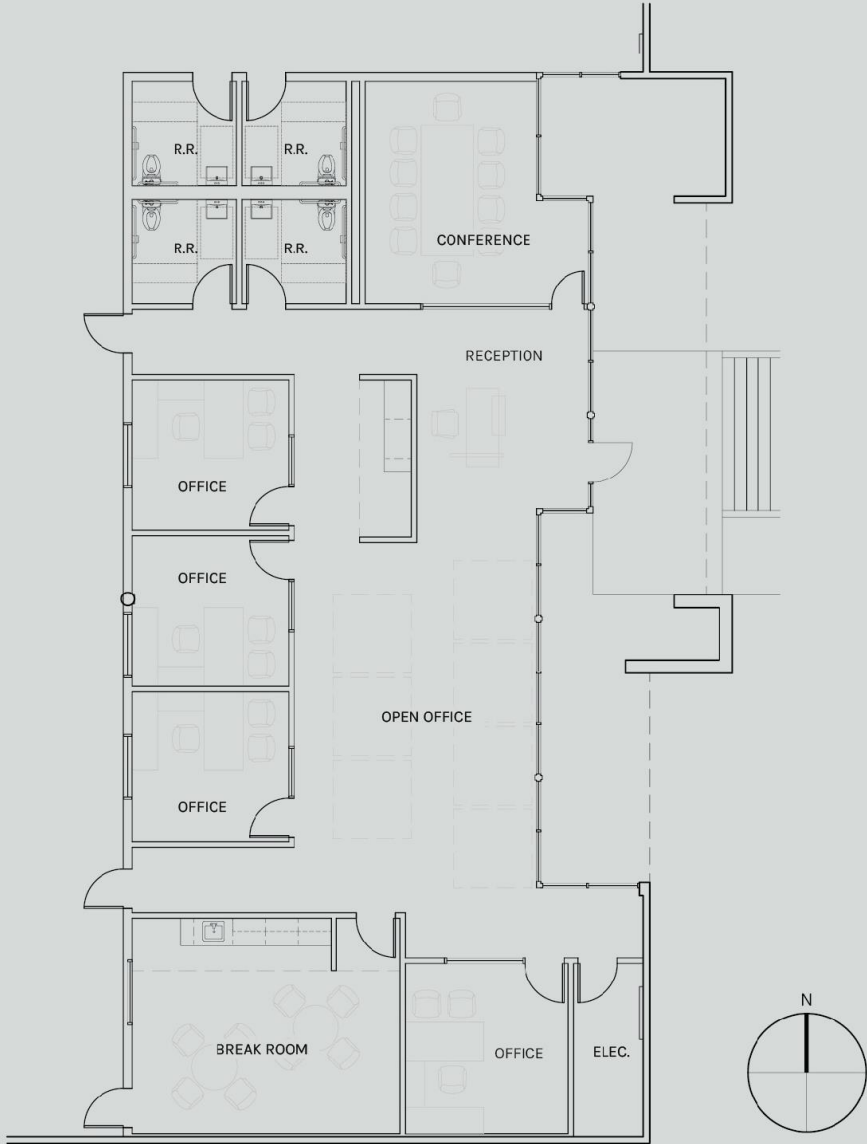






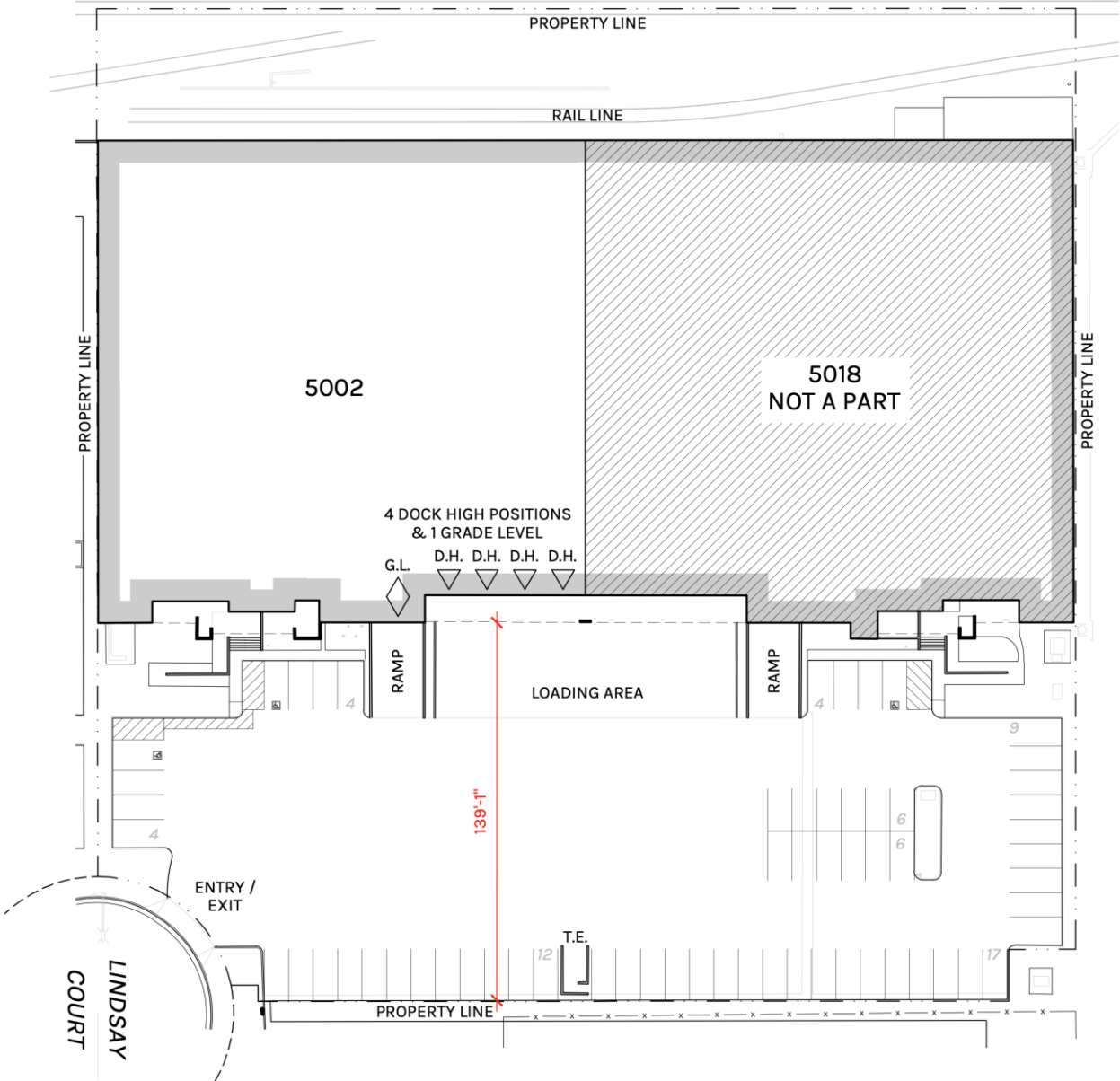
**WAREHOUSE**  
**29,205 SF**

PLAN LAYOUT SUBJECT TO FIELD CONDITIONS AND MAY DIFFER FROM PLAN AS SHOWN. ALL INFORMATION PRESENTED ON THIS DRAWING IS PRESUMED TO BE ACCURATE, HOWEVER TENANT SHOULD VERIFY PERTINENT INFORMATION PRIOR TO COMMITTING TO A LEASE. ANY FURNITURE OR APPLIANCES SHOWN ON PLAN ARE FOR CONCEPT ONLY AND WILL BE TENANT PROVIDED.



OFFICE  
2,845 SF

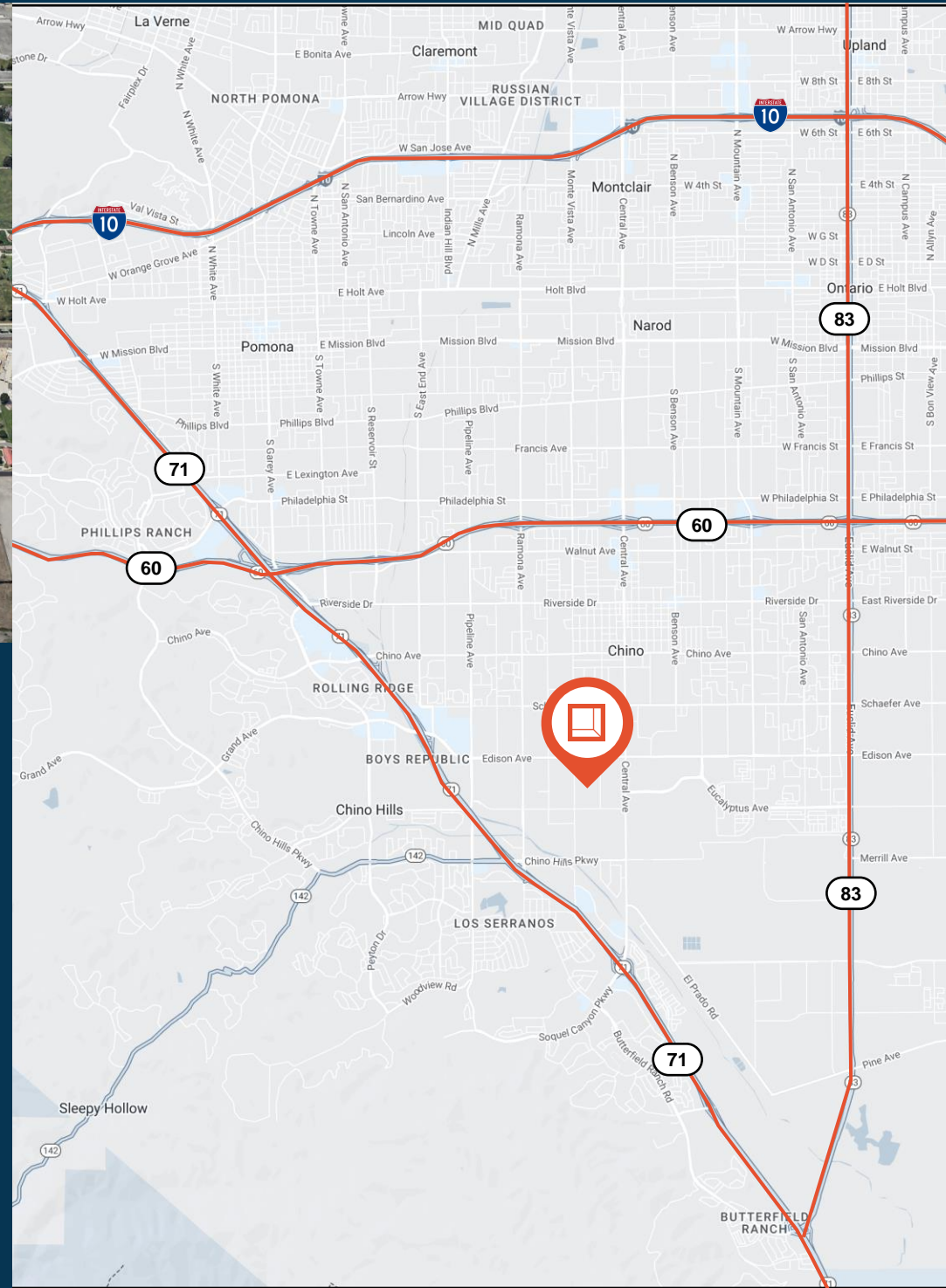
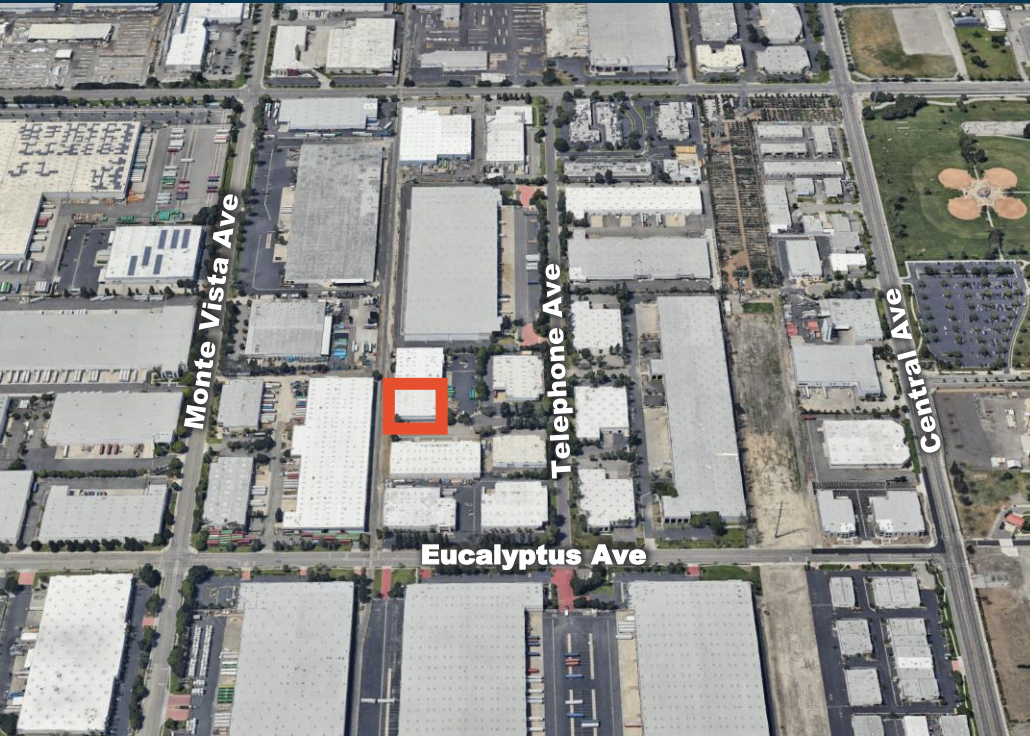
PLAN LAYOUT SUBJECT TO FIELD CONDITIONS AND MAY DIFFER FROM PLAN AS SHOWN. ALL INFORMATION PRESENTED ON THIS DRAWING IS PRESUMED TO BE ACCURATE, HOWEVER TENANT SHOULD VERIFY PERTINENT INFORMATION PRIOR TO COMMITTING TO A LEASE. ANY FURNITURE OR APPLIANCES SHOWN ON PLAN ARE FOR CONCEPT ONLY AND WILL BE TENANT PROVIDED.



PLAN LAYOUT SUBJECT TO FIELD CONDITIONS AND MAY DIFFER FROM PLAN AS SHOWN. ALL INFORMATION PRESENTED ON THIS DRAWING IS PRESUMED TO BE ACCURATE, HOWEVER TENANT SHOULD VERIFY PERTINENT INFORMATION PRIOR TO COMMITTING TO A LEASE. ANY FURNITURE OR APPLIANCES SHOWN ON PLAN ARE FOR CONCEPT ONLY AND WILL BE TENANT PROVIDED.

# LOCATION

# 5002 LINDSAY COURT



- Immediate access to CA – 71 Freeway
- 10.7 miles to Ontario International Airport
- 51.3 miles to Los Angeles International Airport
- 53.5 miles to Ports of Long Beach and Los Angeles
- 46 miles to Long Beach Airport



**Rexford  
Industrial**

## LEASING CONTACTS

Jean Carlo Castillo  
909.300.4519  
jc@macleodco.com  
Lic # 02132021

Chase Macleod  
949.783.7707  
chase@macleodco.com  
Lic # 01899515

Ethan Flor  
909.300.4515  
ethan@macleodco.com  
Lic # 02070247



MACLEOD & CO.

111 Corporate Drive, Suite 260  
Ladera Ranch, CA 92694  
macleodco.com  
Lic # 02235524

This information supplied herein is from sources we deem reliable. It is provided without any representation, warranty or guarantee, expressed or implied as to its accuracy. Prospective Buyer or Tenant should conduct an independent investigation and verification of all matters deemed to be material, including, but not limited to, statements of income and expenses. Consult your attorney, accountant, or other professional advisor.