

SANTA ROSA INDUSTRIAL PARCELS FOR SALE

SANTA ROSA, CA

LAND ACRES **±10.97**

NORTHPOINT **±296,208 SF (4-Parcels)**

HERITAGE **±181,645 SF (2-Parcels)**

NEWMARK

Ron Reinking

Managing Director

707-888-1854

ron.reinking@nmrk.com

CA RE LIC#00931004

PROPERTY SUMMARY

NORTHPOINT- HERITAGE INDUSTRIAL PARCELS SANTA ROSA | CA

- ±4.17 to ±6.90 Acres
- Multiple parcels (individual sales will be considered)
- Price: \$23 PSF
- Parcels Are Fully Mitigated for Wetland and California Tiger Salamander
- Zoned IG (General Industrial) City of Santa Rosa
- Multiple Street Frontage Providing Excellent Access
- Street Improvements: Curb, Gutter, Storm Drain, Fire Hydrants Installed
- Suitable for Logistics, Manufacturing And Warehousing
- City Sewer and Water Service
- Gas & Electric Provided By PG&E
- Located In Established Industrial Park
- Rare Ready-to-Build Parcels with Approved Industrial buildings (115,000 SF & 75,000 SF)
- Perfect Owner/User or Development Opportunity
- 20 Minute Drive To Charles M. Shultz (Sonoma County) Airport



PROPERTY PARCELS



PROMINENT CORPORATE NEIGHBORS

SONIC.



Amy's Kitchen Inc



±4.17 ACRES

±6.80 ACRES



HERITAGE

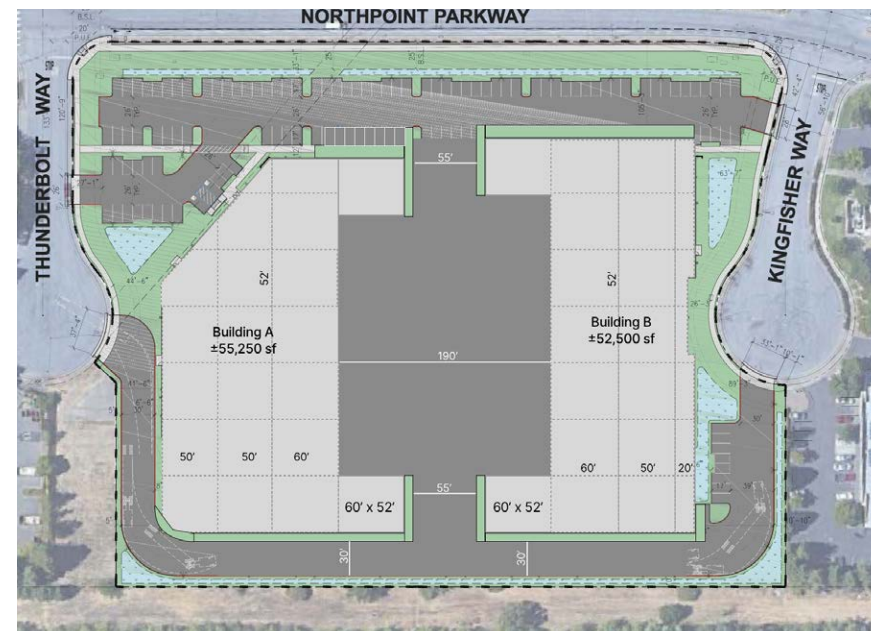
NORTHPOINT



APPROVED INDUSTRIAL BUILDINGS - ±115,000 & ±75,000 SF



CONCEPTUAL TWO BUILDING SITE PLAN



SURROUNDING AMENITIES

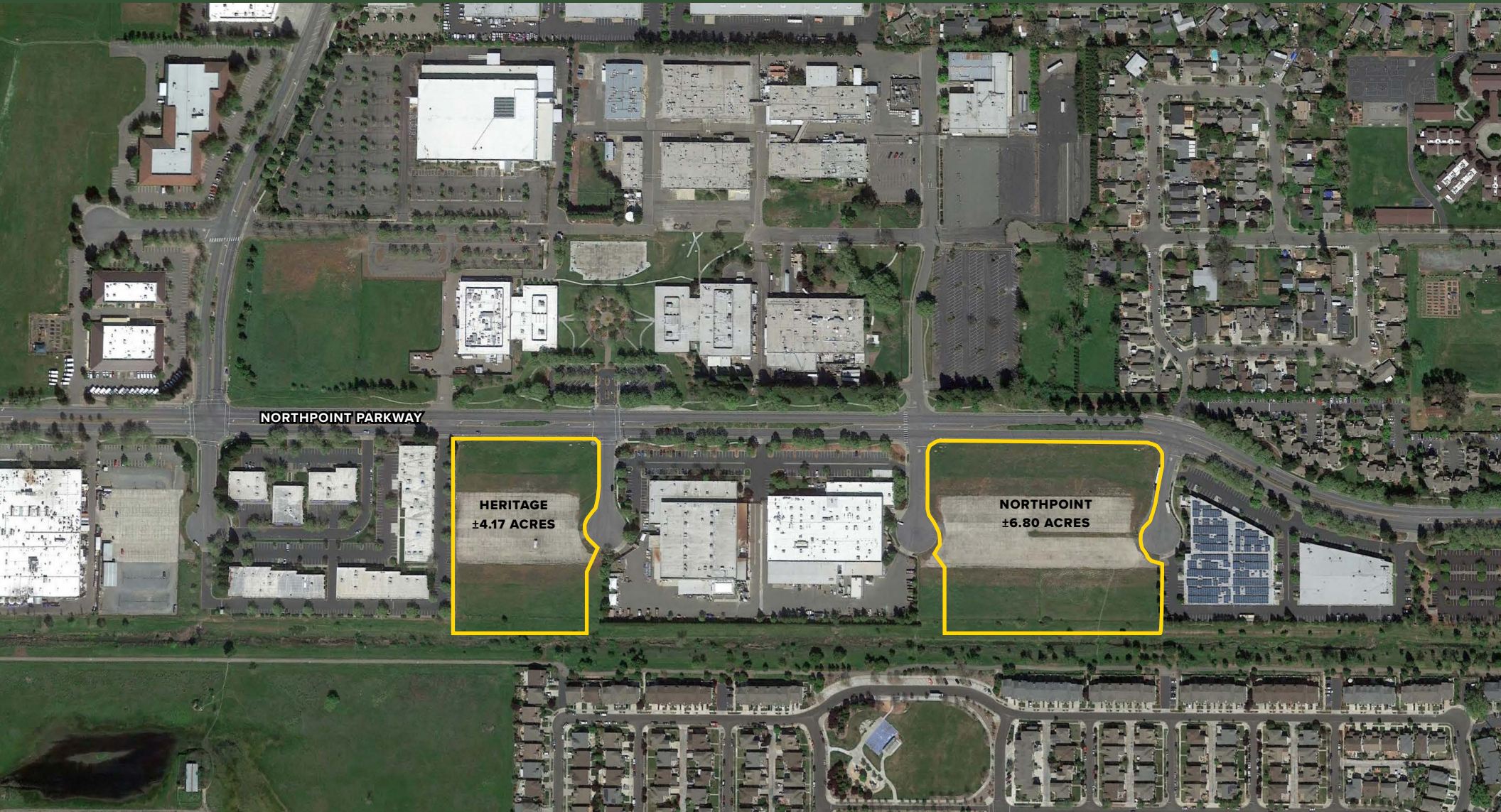


- | | | |
|------------------------------------|---------------|-----------------------------|
| 1 St. Joseph Urgent Care | 9 Kings Tires | 17 Mountain Mike's Pizza |
| 2 FoodMaxx | 10 Boot Barn | 18 Xfinity Store by Comcast |
| 3 FedEx Office Print & Ship Center | 11 Starbucks | |
| 4 Del Valle Mexican Restaurant | 12 Subway | |
| 5 Starbucks | 13 Wendy's | |
| 6 O Sushi | 14 Taco Bell | |
| 7 7-Eleven | 15 KFC | |
| 8 Garcia Tires Plus | 16 Applebee's | |



SANTA ROSA INDUSTRIAL PARCELS FOR SALE

NORTHPOINT PARKWAY, SANTA ROSA, CA



NEWMARK

Ron Reinking

Managing Director

707-888-1854

ron.reinking@nmrk.com

CA RE LIC#00931004

1101 FIFTH AVENUE, SUITE 370, SAN RAFAEL, CA 94901

415-526-7676

NMRK.COM

The distributor of this communication is performing acts for which a real estate license is required. The information contained herein has been obtained from sources deemed reliable but has not been verified and no guarantee, warranty or representation, either express or implied, is made with respect to such information. Terms of sale or lease and availability are subject to change or withdrawal without notice. Last edited:

August 22, 2025 4:58 PM