



FOR LEASE



SANTA CLARA
PLAZA



1,512 SF



Santa Clara Plaza

2110-42 North Tustin Avenue
Santa Ana, California 92705

Property Highlights

- 1,512 SF Retail/Office Space
- High Traffic Area of Santa Ana
- Ample Parking, Great Tenant Mix
- Easy Access to Freeways CA-22, I-5 and State Route 55
- Excellent Street Frontage
- 38,000 Cars Per Day on Tustin Avenue

OFFERING SUMMARY

Lease Rate:	\$2.00 SF/month (NNN, \$0.43)
Available SF:	1,512 SF

DEMOGRAPHICS

	1 MILE	3 MILES	5 MILES
Total Households	8,041	72,031	157,833
Total Population	24,780	246,168	574,971
Average HH Income	\$84,439	\$79,069	\$88,367

Steve Liu

Senior Vice President | C: 714.349.3547
sliu@naicapital.com | CalDRE #01323150

Nikki Liu

Senior Associate | C: 818.744.3398
nliu@naicapital.com | CalDRE #02038755





FOR LEASE



SANTA CLARA
PLAZA



1,512 SF



Steve Liu

Senior Vice President | C: 714.349.3547
 sliu@naicapital.com | CalDRE #01323150

Nikki Liu

Senior Associate | C: 818.744.3398
 nliu@naicapital.com | CalDRE #02038755





FOR LEASE



SANTA CLARA
PLAZA



1,512 SF



SUITE	SIZE (SF)	LEASE TYPE	LEASE RATE	DESCRIPTION
2112	1,512 SF	NNN	\$2.00 SF/month	Former State Farm Insurance Office



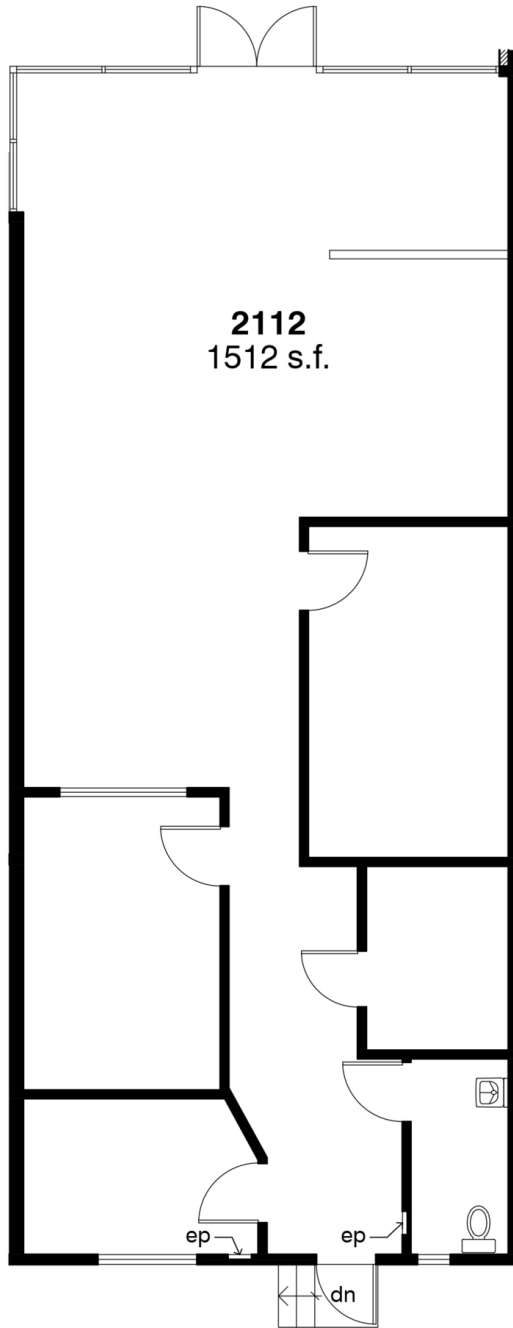
FOR LEASE



SANTA CLARA
PLAZA



1,512 SF



Steve Liu

Senior Vice President | C: 714.349.3547
sliu@naicapital.com | CalDRE #01323150

Nikki Liu

Senior Associate | C: 818.744.3398
nliu@naicapital.com | CalDRE #02038755





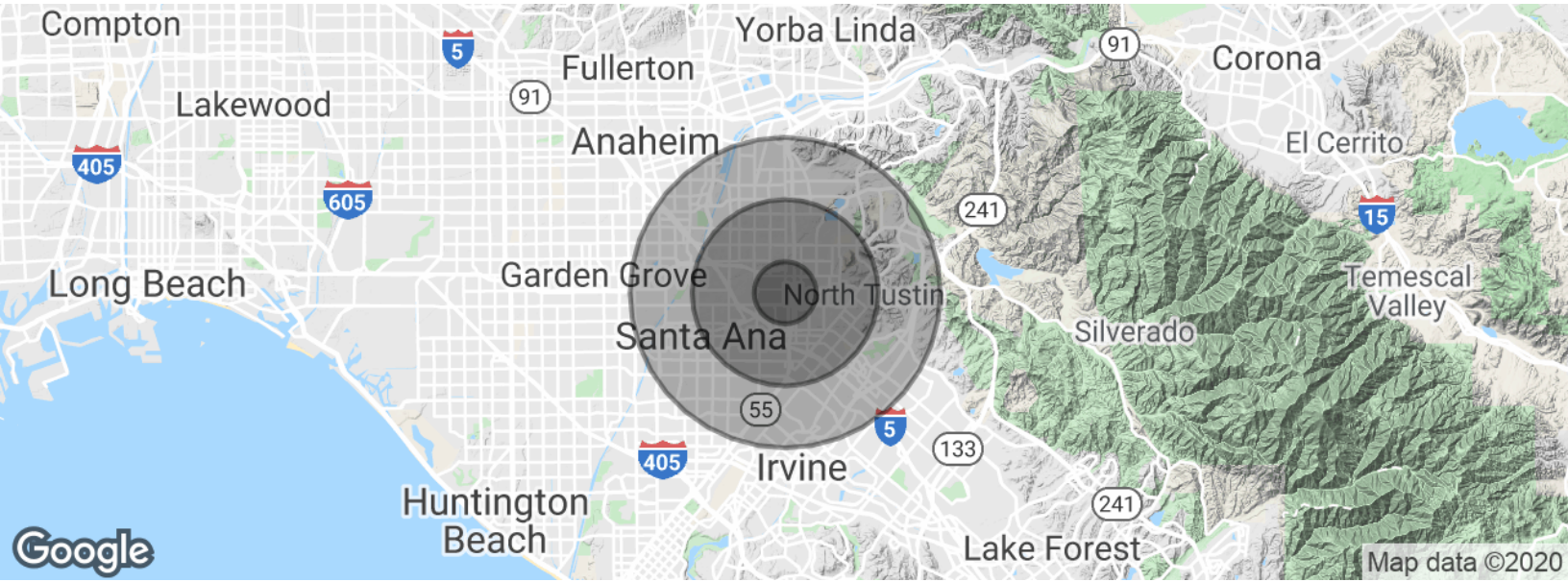
FOR LEASE



SANTA CLARA
PLAZA



1,512 SF



POPULATION

	1 MILE	3 MILES	5 MILES
Total population	24,780	246,168	574,971
Median age	34.6	32.4	32.0
Median age (Male)	33.9	32.0	31.4
Median age (Female)	35.8	32.9	32.7

HOUSEHOLDS & INCOME

	1 MILE	3 MILES	5 MILES
Total households	8,041	72,031	157,833
# of persons per HH	3.1	3.4	3.6
Average HH income	\$84,439	\$79,069	\$88,367
Average house value	\$594,899	\$568,488	\$571,783

* Demographic data derived from 2010 US Census

Steve Liu

Senior Vice President | C: 714.349.3547
sliu@naicapital.com | CalDRE #01323150

Nikki Liu

Senior Associate | C: 818.744.3398
nliu@naicapital.com | CalDRE #02038755

