

DRIVE-THROUGH RETAIL/BANK/OFFICE SPACE FOR LEASE



Southpointe Commons, Suite 100 SOUTHPOINTE BUSINESS PARK

325 SOUTHPOINTE BOULEVARD
CANONSBURG, PA 15317
DRIVE-THROUGH RETAIL/BANK/OFFICE
SPACE FOR LEASE • 2,747 SF

- Available April 1, 2026
- Exterior signage available
- Former bank
- Drive-through available
- Conveniently located at the corner of Southpointe Boulevard and Technology Drive
- Free parking
- NNN Lease
- Flexible lease terms
- Incentives available
- Excellent visibility
- Easily accessible from both the north and south entrances of Southpointe Business Park and from I-79
- Great location
- 25 minutes to Downtown Pittsburgh and the Pittsburgh International Airport

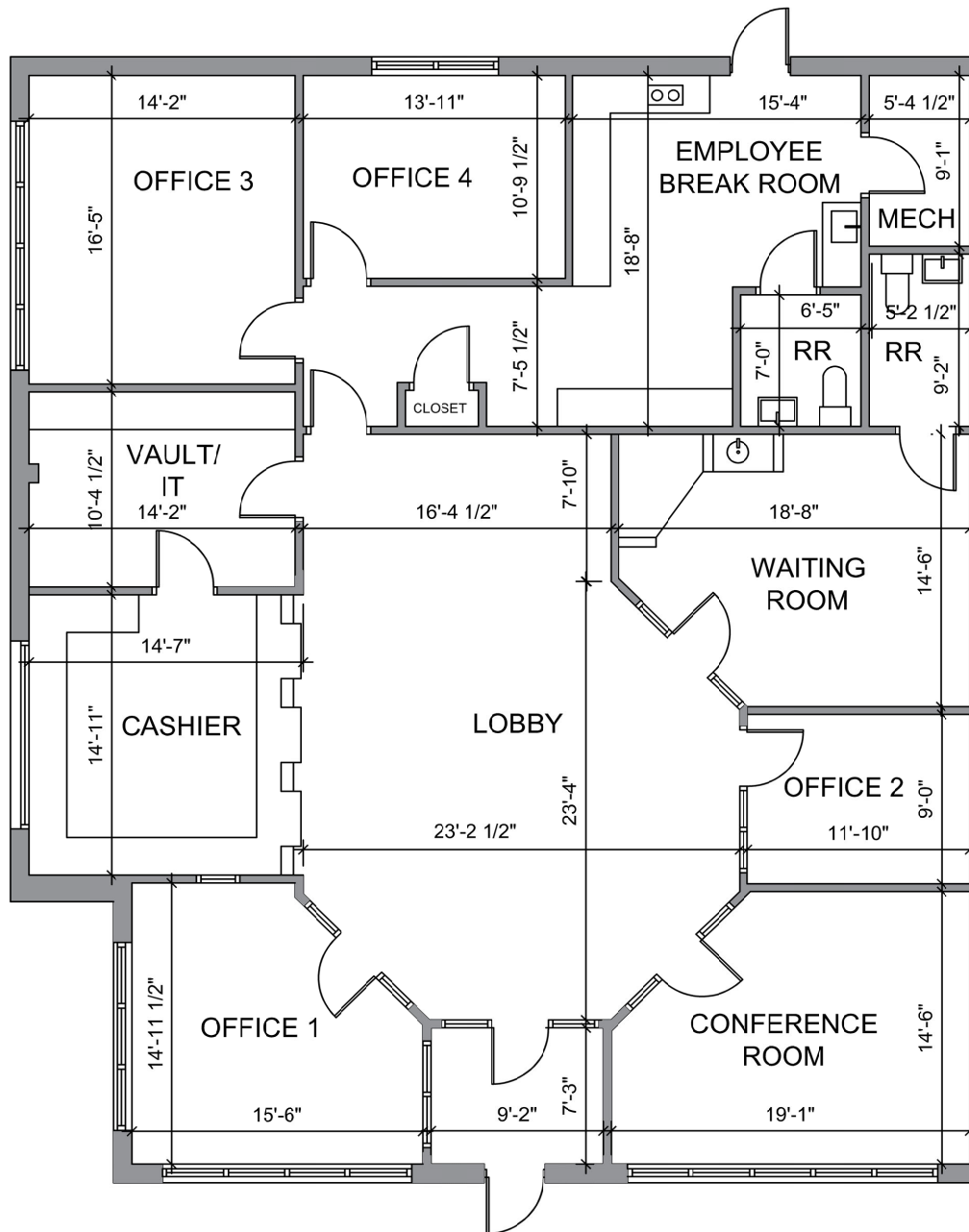
Piatt | Sotheby's
INTERNATIONAL REALTY

COMMERCIAL SERVICES



Southpointe Commons, Suite 100

DRIVE-THROUGH RETAIL/BANK/OFFICE SPACE FOR LEASE • 2,747 SF



Southpointe Commons, Suite 100

DRIVE-THROUGH RETAIL/BANK/OFFICE SPACE FOR LEASE • 2,747 SF



Piatt | Sotheby's
INTERNATIONAL REALTY

COMMERCIAL SERVICES



Patti Dittman

SR. VICE PRESIDENT
OF COMMERCIAL LEASING

LICENSE #RS220903L

724.350.5150 (M)

412.471.4900 (O)

pdittman@piattsir.com

Piatt Sotheby's International Realty
260 Forbes Avenue, Suite 1300 • Pittsburgh, PA 15222 • 412.471.4900 (O)
piattsir.com • info@piattsir.com

Sotheby's International Realty and the Sotheby's International Realty logo are registered (or unregistered) service marks used with permission. Although information has been obtained from sources deemed reliable, Owner, Piatt Sotheby's International Realty, Piatt Companies, and/or its representatives, brokers or agents make no guarantees as to the accuracy of the information contained herein, and offer the Property without expressed or implied warranties of any kind. The offer related to the Property may be withdrawn or changed without notice. Sotheby's International Realty Affiliates LLC fully supports the principles of the Fair Housing Act and the Equal Opportunity Act. Each office is Independently Owned and Operated.

