

RETAIL FOR LEASE

630 EAST STREET

PITTSBORO, NC 27312



NAITRI PROPERTIES

PROPERTY OVERVIEW

Chatham Commons is a premier Pittsboro Shopping Center located at the intersection of East Street (US-64 Business) and Fairgrounds Rd.

ADDRESS	630 East Street, Pittsboro, NC 27312
AVAILABLE SPACE	Suite 4: 2,400 RSF
RENTAL RATE	\$19.00/SF, NNN
TICAM	\$2.36/SF
LOCATION	Located at the intersection of East Street (US-64 Business) and Fairgrounds Road
TRAFFIC COUNTS	East Street (US-64 Bus.) - 12,600 VPD
FEATURES	Tenants include: Food Lion (46,440 SF Shopping Center anchor), Subway, Edward Jones, Second Bloom, China Inn, Acacia Nails, etc.

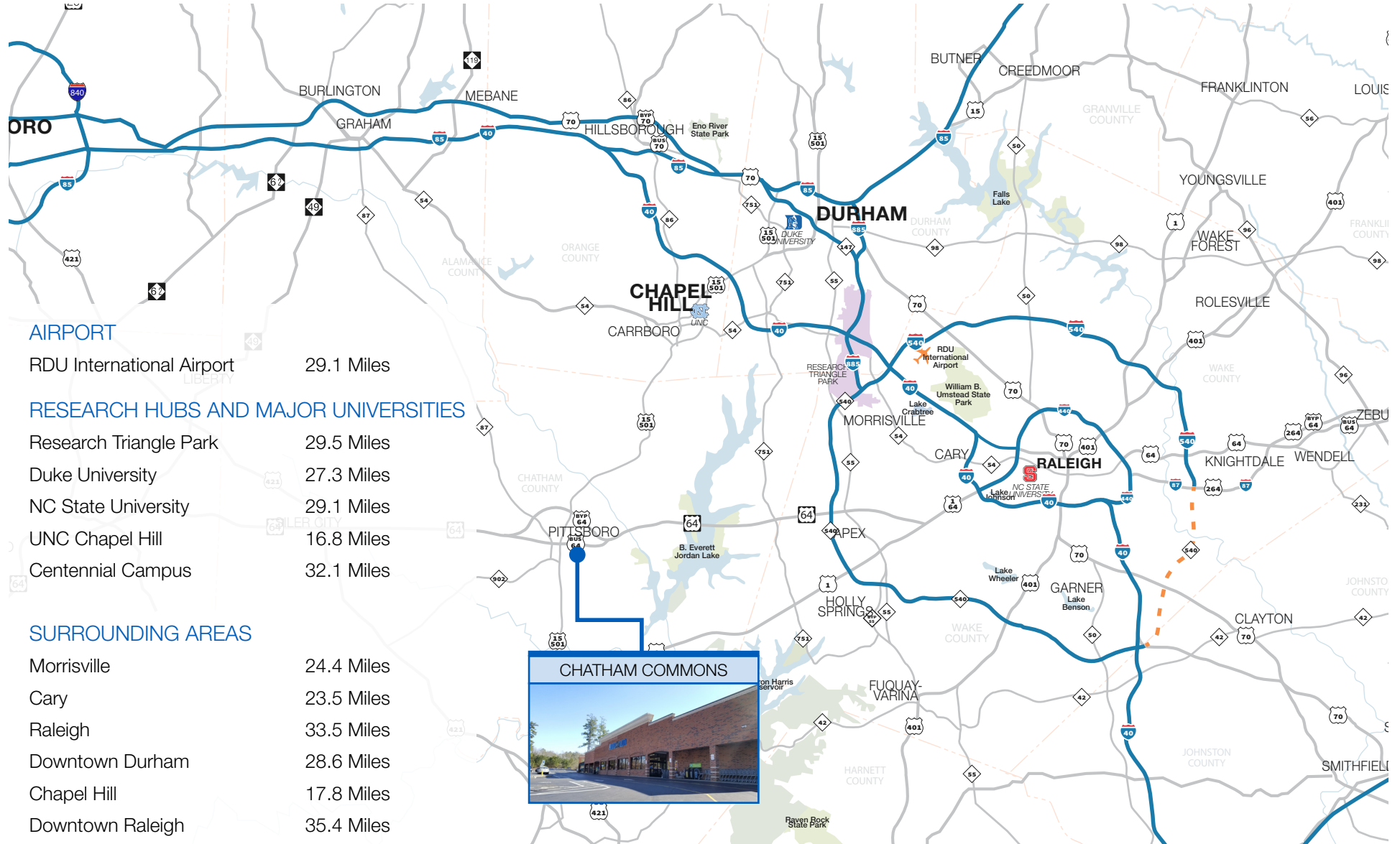
CONTACT

JOAQUIN CANALS | 919.714.7124 | jcanals@triprop.com

NAITRI PROPERTIES



TRIANGLE REGION



CONTACT

JOAQUIN CANALS | 919.714.7124 | jcanals@triprop.com

All information provided herein is from sources deemed reliable. However, all information is subject to verification. NAI Tri Properties does not independently verify nor warrant the accuracy of the information.

NAI TRI PROPERTIES

LOCATION + ACCESS

The map shows the location of Chatham Park North and Downtown Pittsboro, NC. Chatham Park North is highlighted in yellow, and Downtown Pittsboro is highlighted in orange. A blue arrow labeled "SITE" points to a yellow star on East St. Major roads include US 15, US 64, and SR 501. Landmarks include Northwoods High School and Chapel Hill Rd.

JOAQUIN CANALS | 919.714.7124 | jcanals@triprop.com



NATRI PROPERTIES

AERIAL

DOWNTOWN
PITTSBORO

EAST STREET / US-64 BUSINESS

CHATHAM COMMONS
SHOPPING CENTER

630 EAST STREET



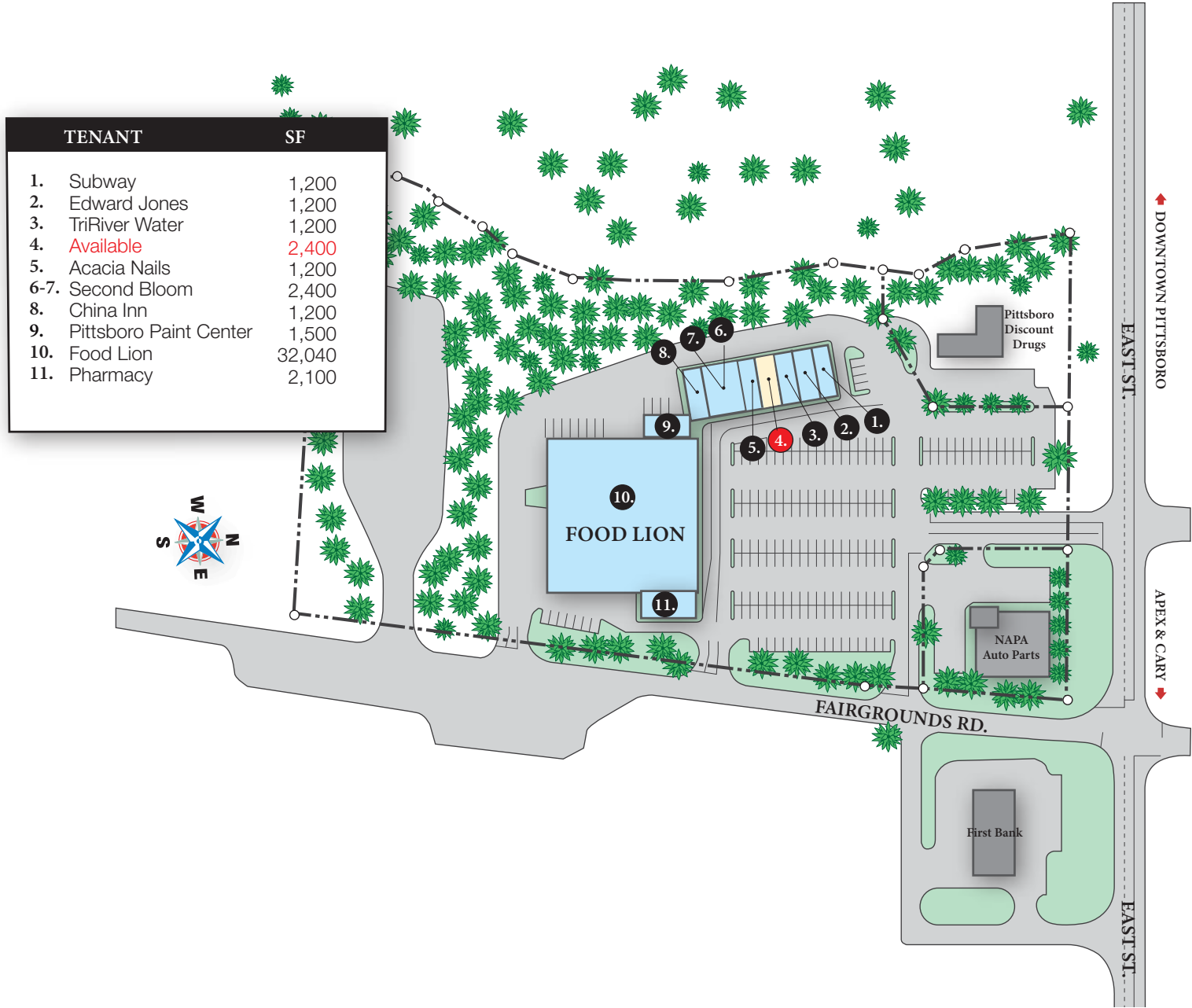
CONTACT

JOAQUIN CANALS | 919.714.7124 | jcanals@triprop.com

All information provided herein is from sources deemed reliable. However, all information is subject to verification. NAI Tri Properties does not independently verify nor warrant the accuracy of the information.

NAITRI PROPERTIES

SITE PLAN



CONTACT

JOAQUIN CANALS | 919.714.7124 | jcanals@triprop.com

All information provided herein is from sources deemed reliable. However, all information is subject to verification. NAI Tri Properties does not independently verify nor warrant the accuracy of the information.



CHATHAM PARK
Many Choices. One Place.

Chatham Park:

Chatham Park is a master planned community located north and east of the Town of Pittsboro, North Carolina on approximately 7,068 acres of land. Chatham Park is a special place that brings together all the elements of life. Here, nature and commerce, art and recreation, homes and schools will thrive on more than 7,000 acres. Boutique shops and artisanal restaurants will be only a short walk from home. With a growing corporate business park, you can commute to work by bike or trail. Chatham Park will provide life-affirming choices for building a career and raising a family.

- Chatham Park will donate up to ten school sites to house both public and private schools
- The Haw River will be protected by a buffer zone greater than the State of North Carolina requires
- New residences will use green power generated from CHATHAM PARK's own solar farm
- All buildings currently built will be LEED certified; new smart homes will be 30% more energy efficient than other area homes
- Chatham Park's first retail center opened fall of 2017, including local specialty shops and restaurants, a grocery store, and a movie theater
- Chatham Park will include 22 million square feet of non-residential space
- Approximately 30% of Chatham Park will be open space
- Trails, parks, and greenways will connect the surrounding neighborhoods
- 50 plus miles of walking and biking trails will offer direct access to nearby Jordan Lake and the historic Haw River
- Chatham Park is zoned for 22,000 new residences
- Amenities include a smart grid, access to a solar farm, and one gigabyte high speed internet

Source: <http://chathampark.com>

CONTACT

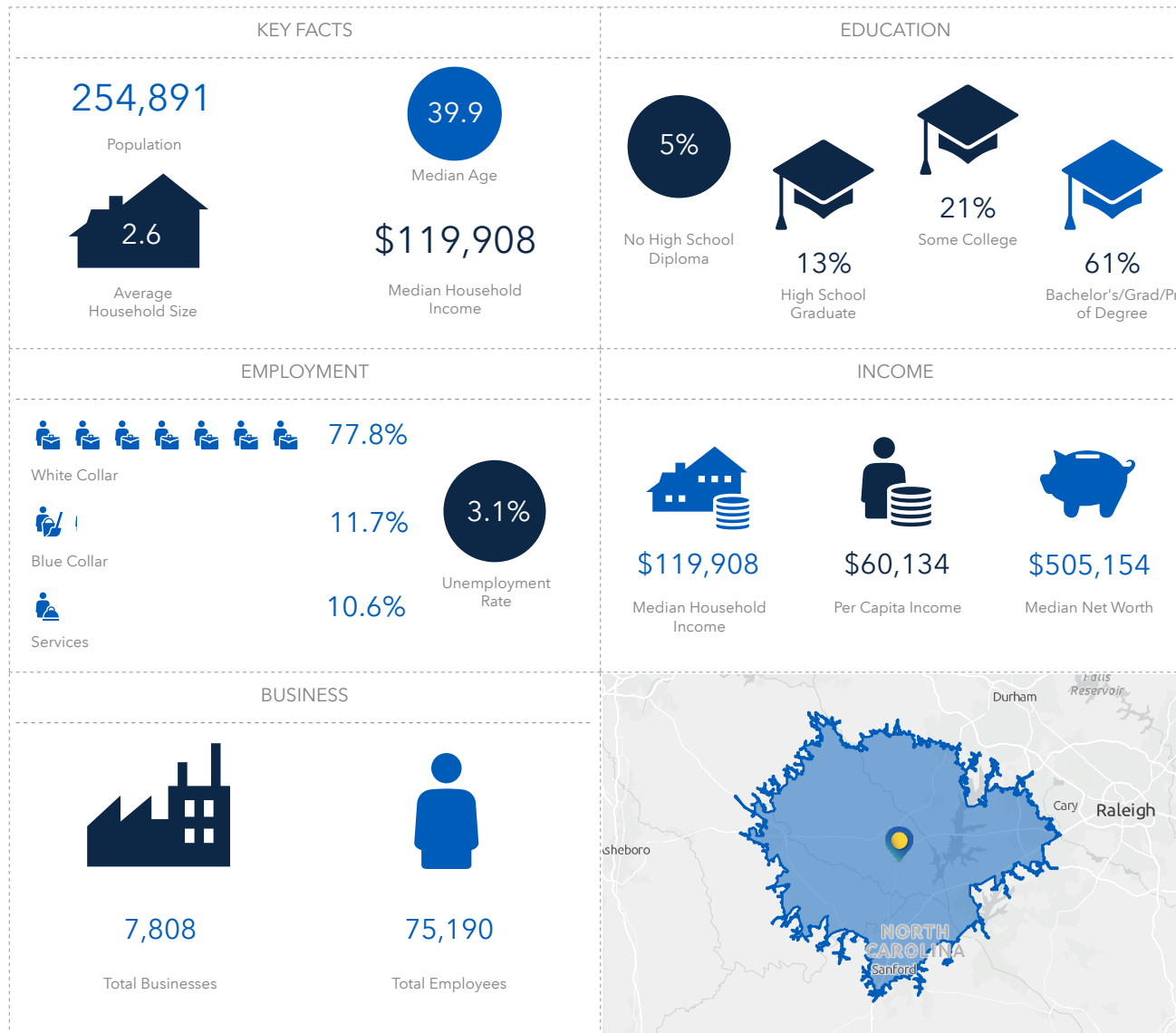
JOAQUIN CANALS | 919.714.7124 | jcanals@triprop.com

All information provided herein is from sources deemed reliable. However, all information is subject to verification. NAI Tri Properties does not independently verify nor warrant the accuracy of the information.

NAI TRI PROPERTIES

DEMOGRAPHICS

27 MINUTE AVERAGE COMMUTE



CONTACT

JOAQUIN CANALS | 919.714.7124 | jcanals@triprop.com

All information provided herein is from sources deemed reliable. However, all information is subject to verification. NAI Tri Properties does not independently verify nor warrant the accuracy of the information.