



REAL ESTATE INVESTMENT AND MANAGEMENT

OFFICE CONDO FOR SALE

19465 DEERFIELD AVE. | SUITE 310 | LANSDOWNE, VA 20176



PROPERTY FEATURES

This 2,821 sf Class A medical/office suite offers a reception, waiting area, offices, exam rooms & breakroom.

- Bright suite with large windows.
- Ideal for medical or professional use.
- Located in Lansdowne Office Park with ample parking.

Available: 2,821 SF

Sale Price: \$846,300

Condo Fee:

Taxes (2025):

Zoning: PDOP

AREA HIGHLIGHTS

Directly across from Inova Loudoun Hospital, a major regional medical campus. Minutes from Route 7 and Belmont Ridge Road, providing quick access to the entire Loudoun County corridor. 12 miles from Washington Dulles International Airport.

Surrounded by medical offices, specialty clinics, corporate offices, and established residential communities.

Close to Lansdowne amenities including Lansdowne Town Center, retail, dining, cafés, fitness centers, and hotels.

Strong demographics and high-income area with continuous growth and demand for medical and professional services.

FOR MORE INFORMATION

MELANIE NOBRIGA

Senior Operations Manager & Agent
melanie@boosalisproperties.com
703.494.7691 (o) | 808.937.9417 (c)

THOMAS VELTSISTAS

Commercial Agent
thomas@boosalisproperties.com
703.494.7691 (o) | 703.628.8978 (c)

GEORGE BOOSALIS

President/Principal Broker
george@boosalisproperties.com
703.494.7691 (o)

BOOSALIS PROPERTIES | 13562 Richmond Highway, Suite 100 | Woodbridge, VA 22191 | www.BoosalisProperties.com

This information has been obtained through sources deemed reliable, but accuracy cannot be guaranteed.



REAL ESTATE INVESTMENT AND MANAGEMENT

OFFICE CONDO FOR SALE

19465 DEERFIELD AVE. | SUITE 310 | LANSDOWNE, VA 20176



FOR MORE INFORMATION

MELANIE NOBRIGA
Senior Operations Manager & Agent
melanie@boosalisproperties.com
703.494.7691 (o) | 808.937.9417 (c)

THOMAS VELTSISTAS
Commercial Agent
thomas@boosalisproperties.com
703.494.7691 (o) | 703.628.8978 (c)

GEORGE BOOSALIS
President/Principal Broker
george@boosalisproperties.com
703.494.7691 (o)

BOOSALIS PROPERTIES | 13562 Richmond Highway, Suite 100 | Woodbridge, VA 22191 | www.BoosalisProperties.com

This information has been obtained through sources deemed reliable, but accuracy cannot be guaranteed.



REAL ESTATE INVESTMENT AND MANAGEMENT

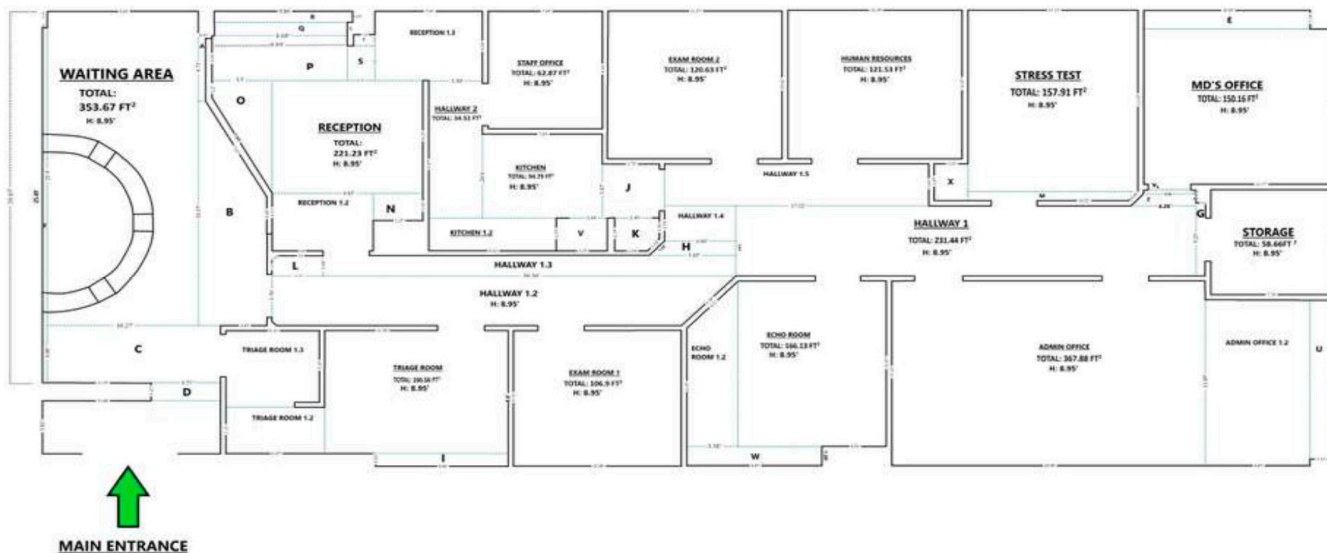
OFFICE CONDO FOR SALE

19465 DEERFIELD AVE. | SUITE 310 | LANSDOWNE, VA 20176

FLOOR PLAN

CHI-Lansdowne, VA

19465 Deerfield Ave,
Lansdowne, VA 20176



FOR MORE INFORMATION

MELANIE NOBRIGA
Senior Operations Manager & Agent
melanie@boosalisproperties.com
703.494.7691 (o) | 808.937.9417 (c)

THOMAS VELTSISTAS
Commercial Agent
thomas@boosalisproperties.com
703.494.7691 (o) | 703.628.8978 (c)

GEORGE BOOSALIS
President/Principal Broker
george@boosalisproperties.com
703.494.7691 (o)

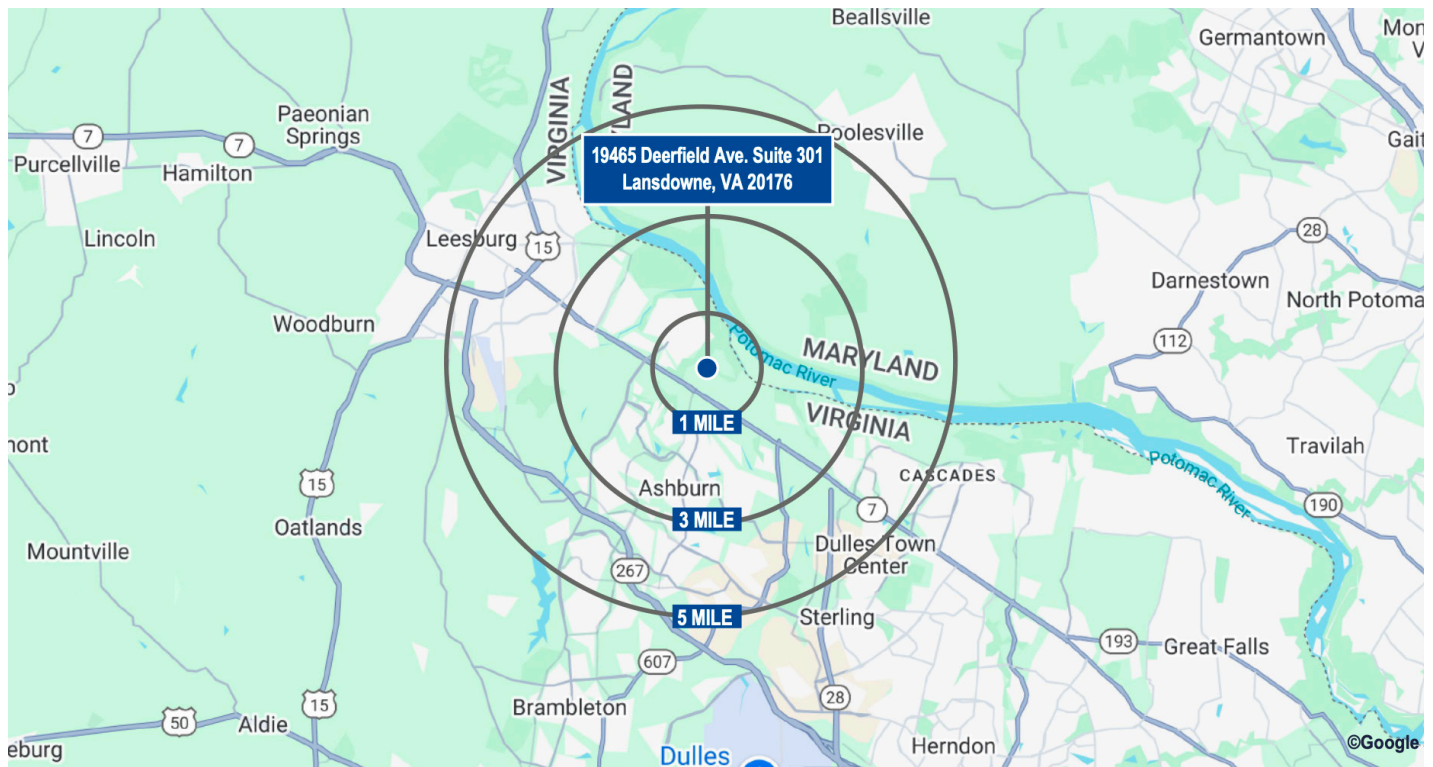


REAL ESTATE INVESTMENT AND MANAGEMENT

OFFICE CONDO FOR SALE

19465 DEERFIELD AVE. | SUITE 310 | LANSDOWNE, VA 20176

DEMOGRAPHICS



DEMOGRAPHICS	1 MILE	3 MILES	5 MILES
Population	9,548	64,784	155,590
Households	4,012	23,734	54,909
Avg. HH Income	\$156,286	\$176,447	\$165,136
Median Home Value	\$126,679	\$154,157	\$140,381
Businesses	1,269	3,149	7,756
Employees	7,980	24,277	61,744

FOR MORE INFORMATION

MELANIE NOBRIGA
Senior Operations Manager & Agent
melanie@boosalisproperties.com
703.494.7691 (o) | 808.937.9417 (c)

THOMAS VELTSISTAS
Commercial Agent
thomas@boosalisproperties.com
703.494.7691 (o) | 703.628.8978 (c)

GEORGE BOOSALIS
President/Principal Broker
george@boosalisproperties.com
703.494.7691 (o)