

2401 E. EL SEGUNDO

El Segundo, CA 90245



CONTACT INFORMATION:

Jason Fine

Managing Director
jason.fine@jll.com
+1 424 294 3431

Marin Turney

Executive Vice President
marin.turney@jll.com
+1 213 239 5902

**RARE BUILDING
TOP SIGNAGE
OPPORTUNITY**

**TWO FULL FLOORS
AVAILABLE | 36,000 RSF**



2401 E. EL SEGUNDO BLVD

Discover 2401 E. El Segundo Blvd, an impressive 107,884 SF office building that sits on a large, 3-acre parcel with abundant, free surface parking and a subterranean garage for reserved parking with direct access to the project.



The neighboring amenities offer a wide variety of shopping, dining, hospitality, and leisure options



City of El Segundo is home to the Los Angeles Lakers, Sparks, Kings, and Chargers



2nd floor corner suite offers 3 corners of glass line



Rare, building top signage opportunity visible from over 90,000 daily vehicles



Easy access to the 405 and 105 freeways



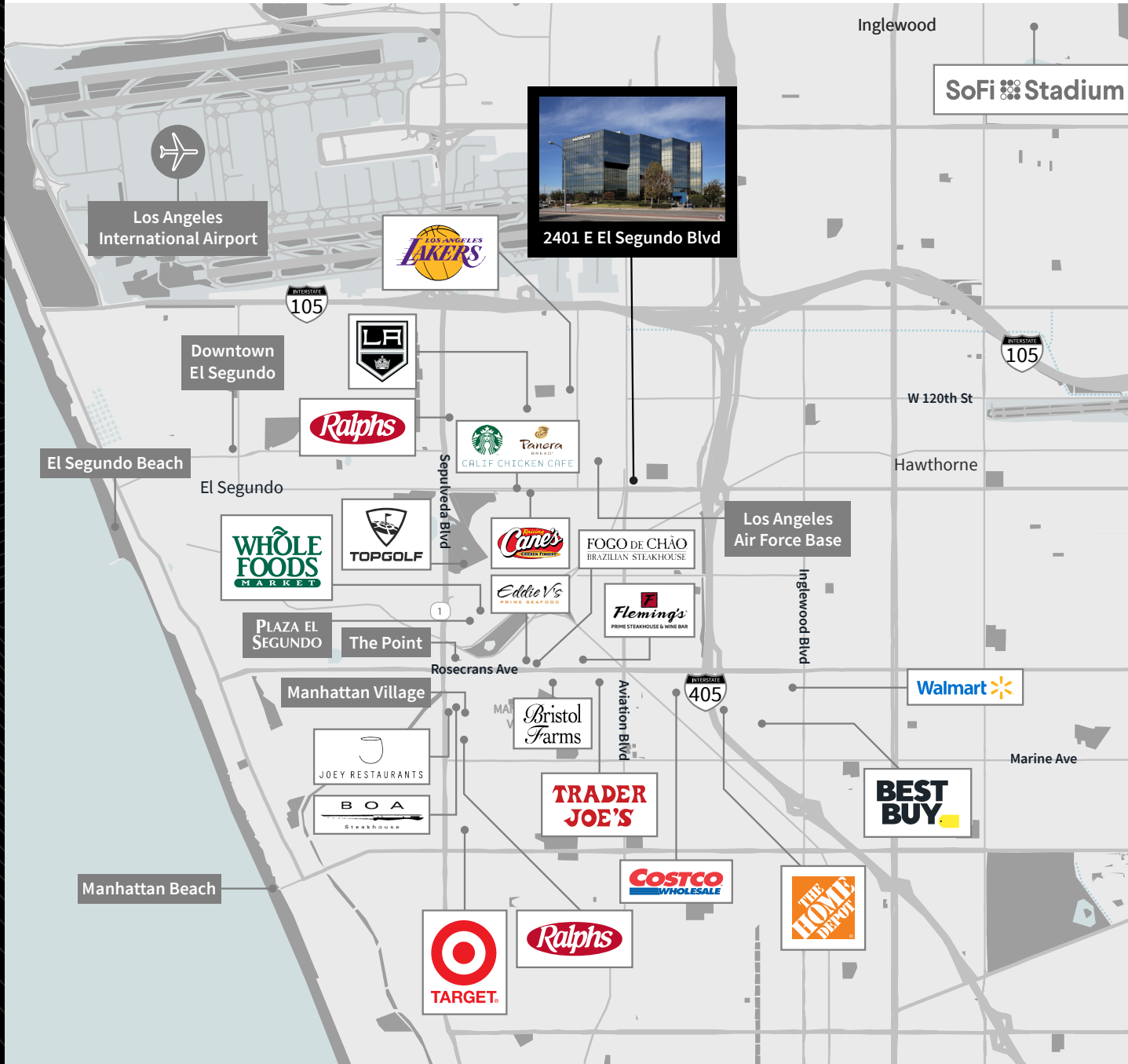
Located within minutes of LAX



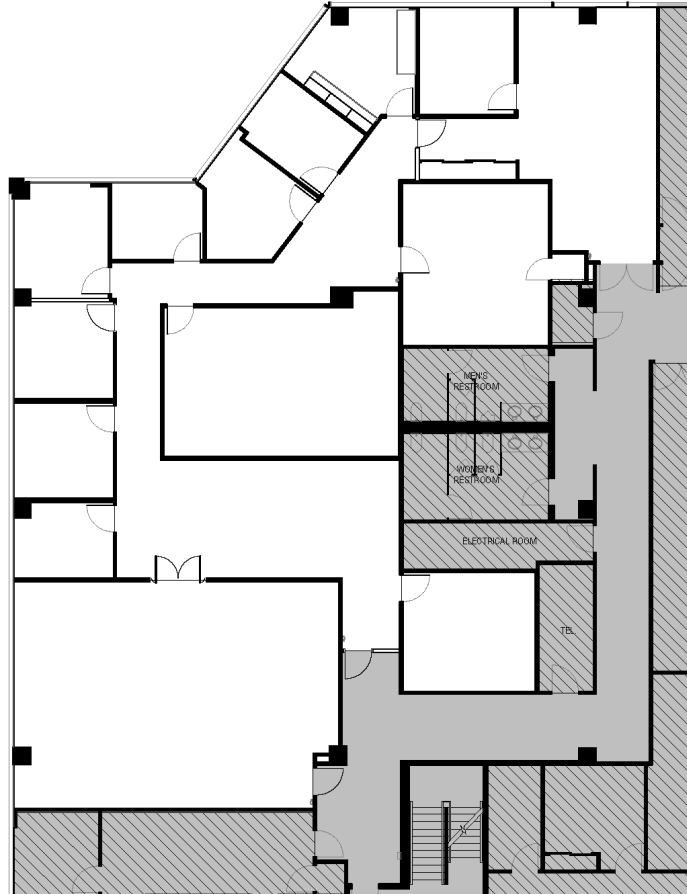
Located directly across the street from the LA Air Force Base, which houses and supports the headquarters of the U.S. Space Force's Space Systems Command (SSC)



AMENITY MAP



SUITE 100



5,350 RSF



\$3.85-\$4.05 PSF/MO FSG



9 OFFICES



OPEN AREA FOR
WORKSTATIONS

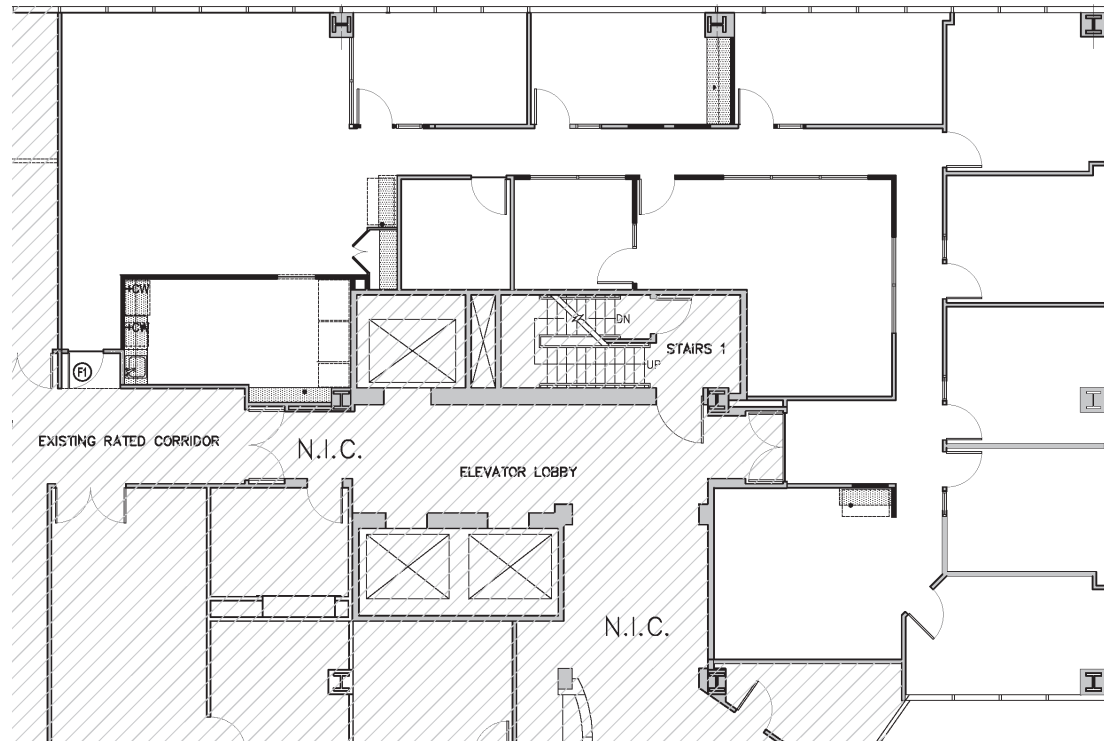


2 CONFERENCE
ROOMS



FREE SURFACE
PARKING

SUITE 120



4,092 RSF



\$3.85-\$4.05 PSF/MO FSG



8 OFFICES



OPEN AREA FOR
WORKSTATIONS

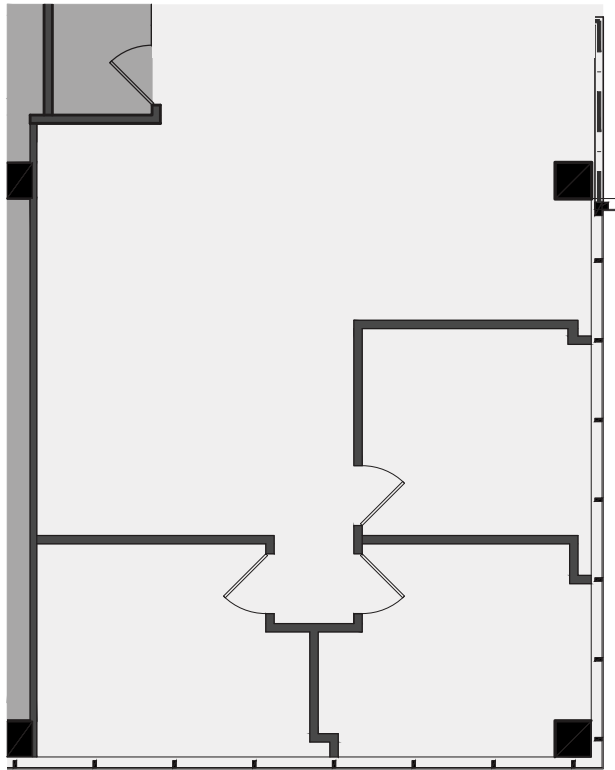


2 CONFERENCE
ROOMS



FREE SURFACE
PARKING

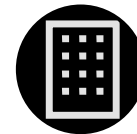
SUITE 210



1,245 RSF



\$3.85-\$4.05 PSF/MO FSG



3 OFFICES



RARE, CORNER
MINI-SUITE

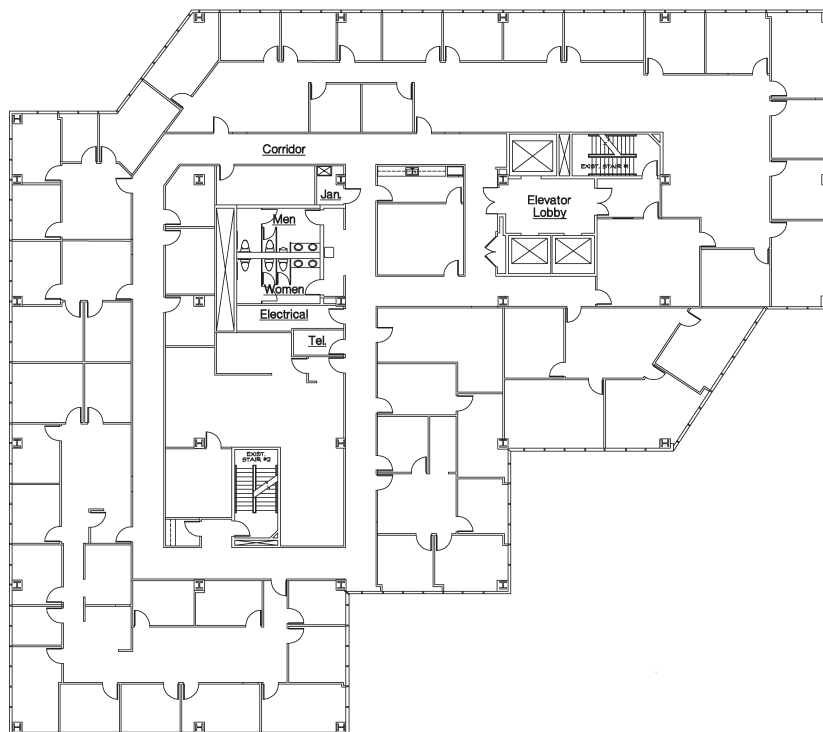


LARGE CONFERENCE/
COMMON TRAINING
ROOM



FREE SURFACE
PARKING

SUITE 300



18,171 RSF



\$3.85-\$4.05 PSF/MO FSG



33 OFFICES



OPEN AREA FOR
WORKSTATIONS



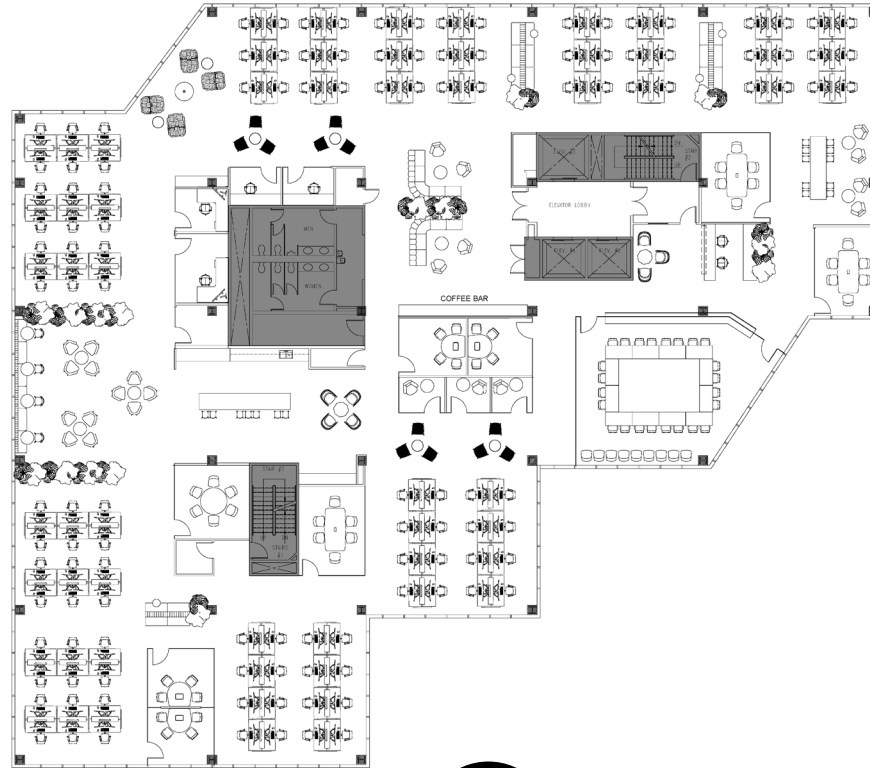
15 CONFERENCE ROOMS



FREE SURFACE
PARKING

SUITE 300

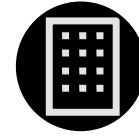
HYPOTHETICAL SPACE PLAN - CREATIVE CONFIGURATION



18,171 RSF



\$3.85-\$4.05 PSF/MO FSG



4 OFFICES



OPEN AREA FOR
WORKSTATIONS



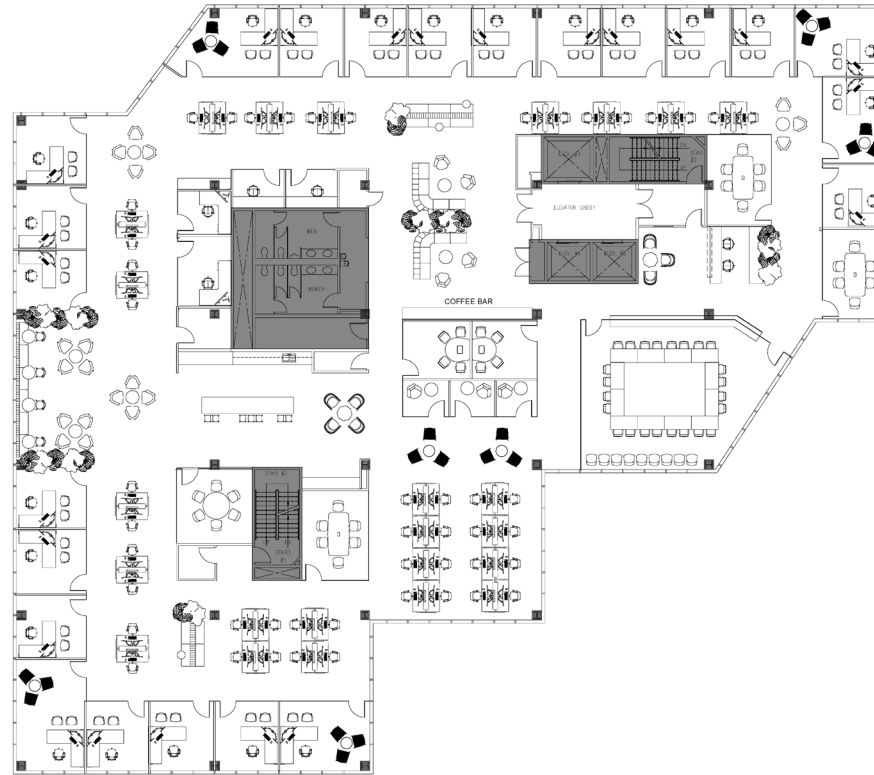
9 CONFERENCE ROOMS



FREE SURFACE
PARKING

SUITE 300

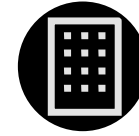
HYPOTHETICAL SPACE PLAN - TRADITIONAL CONFIGURATION



18,171 RSF



\$3.85-\$4.05 PSF/MO FSG



25 OFFICES



OPEN AREA FOR
WORKSTATIONS

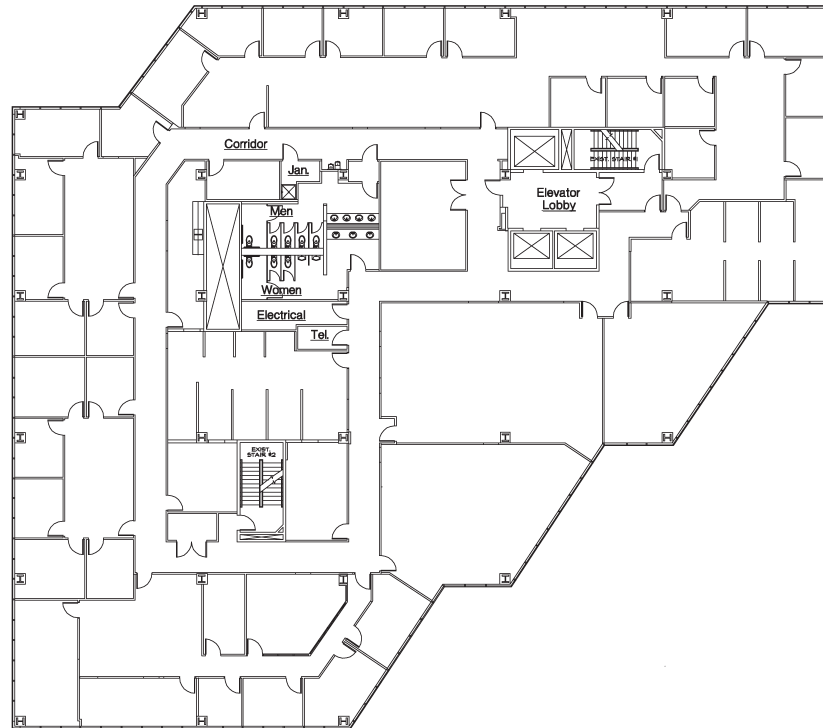


7 CONFERENCE ROOMS



FREE SURFACE
PARKING

SUITE 500



18,625 RSF



\$3.85-\$4.05 PSF/MO FSG



22 OFFICES



3 LARGE TRAINING
ROOMS



11 CONFERENCE ROOMS



FREE SURFACE
PARKING

AERIAL MAP





CONTACT INFORMATION:

Jason Fine

Managing Director
jason.fine@jll.com
+1 424 294 3431

Marin Turney

Executive Vice President
marin.turney@jll.com
+1 213 239 5902

Jones Lang LaSalle Brokerage, Inc. RE License #01856260



Although information has been obtained from sources deemed reliable, neither Owner nor JLL makes any guarantees, warranties or representations, express or implied, as to the completeness or accuracy as to the information contained herein. Any projections, opinions, assumptions or estimates used are for example only. There may be differences between projected and actual results, and those differences may be material. The Property may be withdrawn without notice. Neither Owner nor JLL accepts any liability for any loss or damage suffered by any party resulting from reliance on this information. If the recipient of this information has signed a confidentiality agreement regarding this matter, this information is subject to the terms of that agreement. ©2025 Jones Lang LaSalle IP, Inc. All rights reserved.