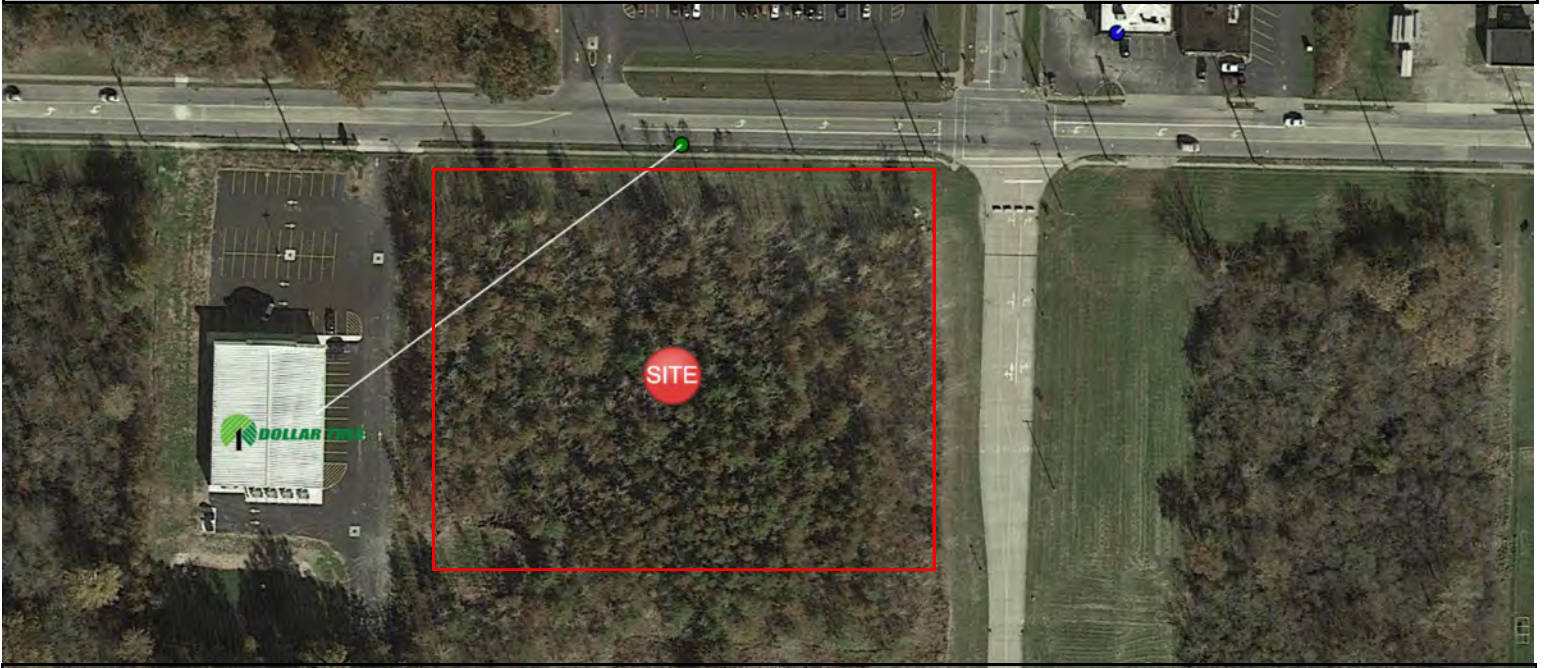


COCCA DEVELOPMENT

VACANT LAND AVAILABLE FOR BTS

COLORADO AVENUE

LORAIN, OH 44052



- Land available next to newly-built Dollar Tree store, across from Discount Drug Mart
- Colorado Avenue is high traffic, rapidly growing area

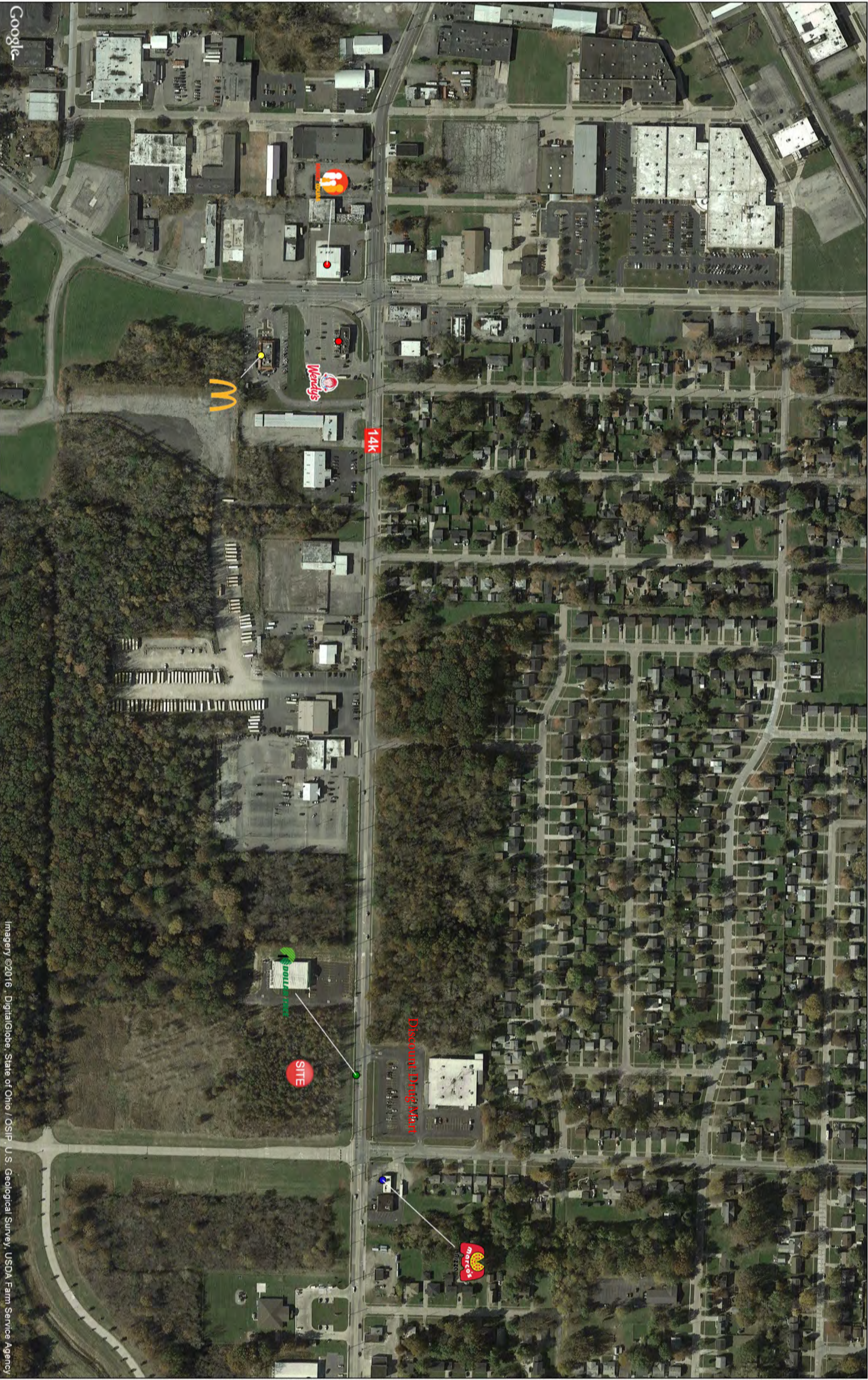
AVAILABLE SUITE AREA—\$/square foot NNN:

Approximately 3.67 Acres
WILL BUILD TO SUIT

NNN: Base rent plus prorata share of Real Estate Taxes, Insurance, and Common Area expenses, including but not limited to snow removal, lawn care, and parking lot maintenance. Tenant pays separately metered utilities for gas, electric, water, sewer, & trash removal.

CALL 330-729-1010 FOR MORE INFORMATION

www.coccadevelopment.com



2250 Colorado Ave

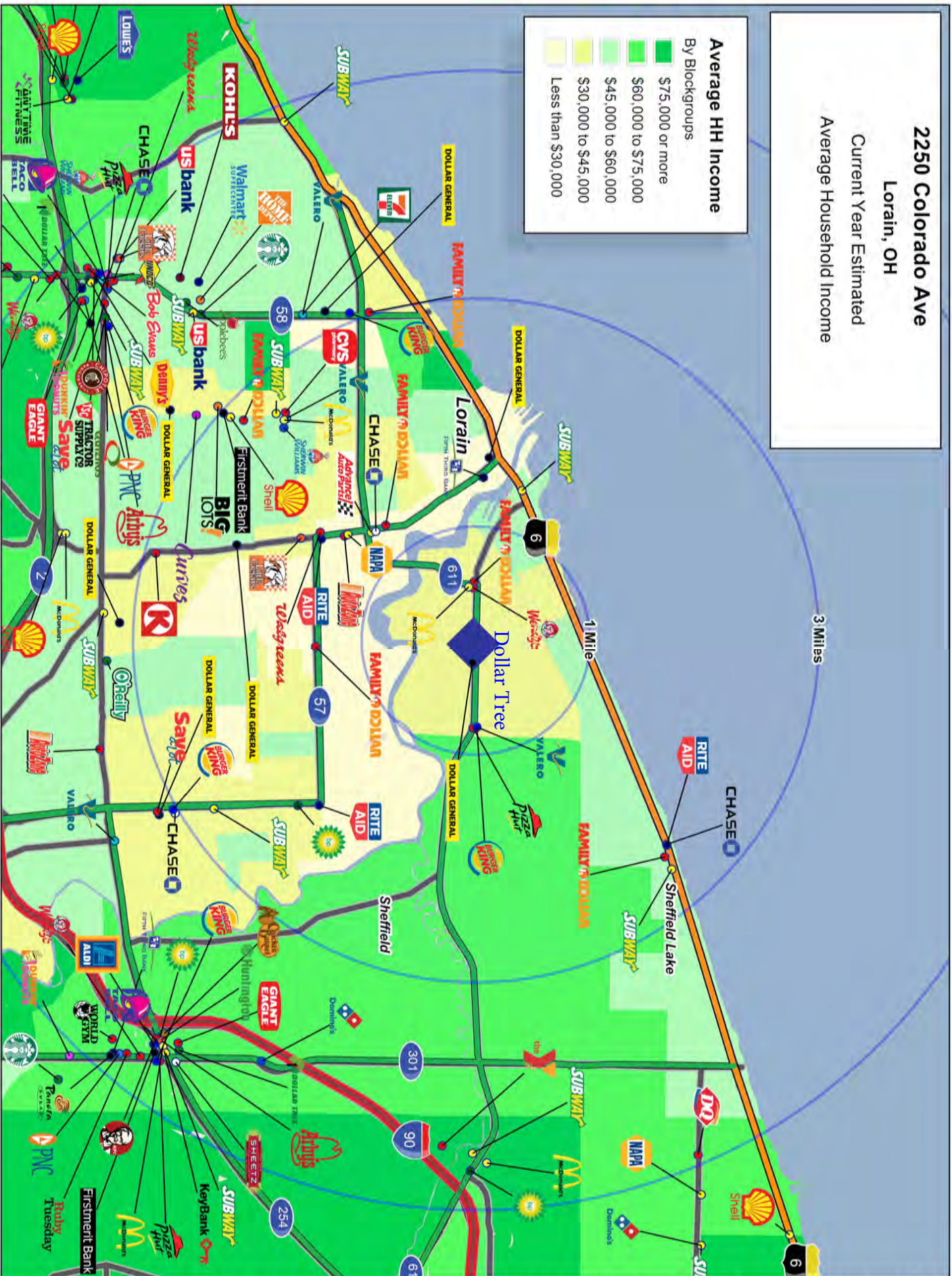
Lorain, OH

Current Year Estimated

Average Household Income

Average HH Income

By Blockgroups



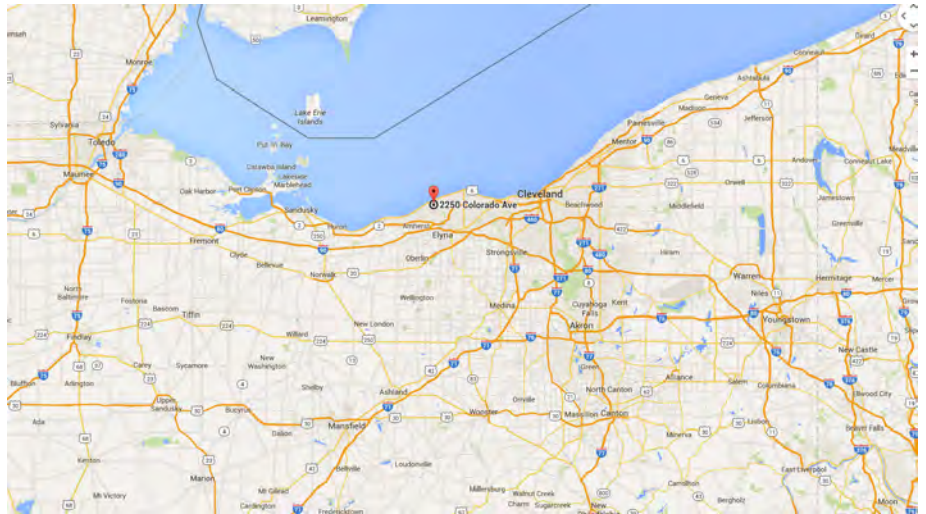
This map was produced using data from private and government sources deemed to be reliable. The information herein is provided without representation or warranty.

Colorado Avenue

Lorain, OH 44052

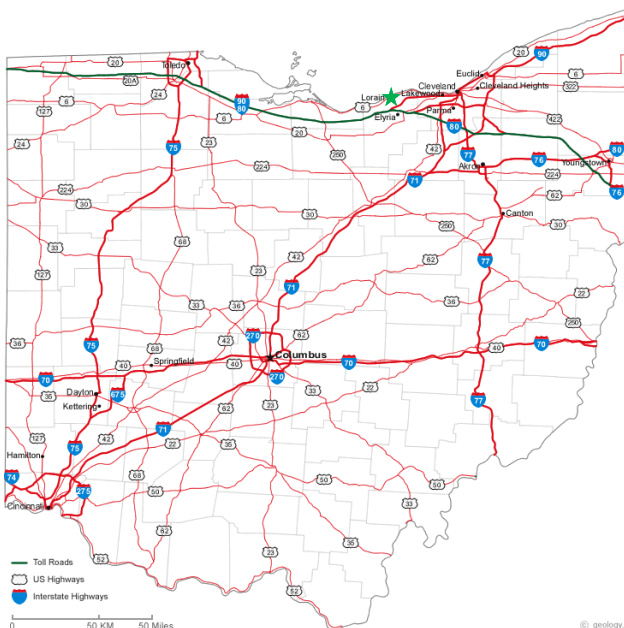
The site is conveniently located on Lake Erie, one of the Great Lakes.

The area is a major tourist draw for boating and fishing.



It is just 6.9 miles North of Interstate 90, 7 miles North of Interstate 80, and 8 miles North of Elyria.

It is nestled midway between two major cities with tourist attractions — 32 miles East of Sandusky, with Cedar Point, a 365-acre amusement park which opened in 1870 and is the second-oldest in the country; the park features 71 rides including 17 roller coasters, and 30 miles West of Cleveland, home of the MLB Cleveland Indians, the NBA Cleveland Cavaliers, and the NFL Cleveland Browns. Cleveland is also home to the Rock and Roll Hall of Fame and Jack Casino.



COCCA DEVELOPMENT, LTD

Colorado Avenue

Lorain, OH 44052

AT A GLANCE

- ◆ Lorain, a municipality in Lorain County of Northeastern Ohio on Lake Erie, was originally settled in 1787 as a small village named “Mouth of Black River”. By 1874 the village had grown and was incorporated as the city of Lorain, named for the county in which it was located.
- ◆ Ford Motor operated Lorain Assembly Plant until it ceased operations in December 2005 because UAW and Ford Management were unable to come to terms on a new contract.
- ◆ Sprawling US Steel, portions acquired by Republic Steel, stretches nearly 3 miles on the city’s south side. It has operated since 1895 and continues to employ 1000’s of local residents. Though the blast furnaces were idled in late 2008, Republic announced in December of 2011 that it was building electric arc furnaces to once again make steel.
- ◆ Notable people born in Lorain include Helen Steiner Rice, renowned author & poet; Don Novello aka Father Guido Sarducci on Saturday Night Live; and Anthony Hitchens, linebacker for the Dallas Cowboys who was drafted in the 4th round of the 2014 NFL draft—he played college football for the University of Iowa.

GRAPHIC PROFILE

2000-2010 Census, 2014 Estimates with 2019 Projections

Calculated using Proportional Block Groups

Lat/Lon: 41.4653/-82.1474

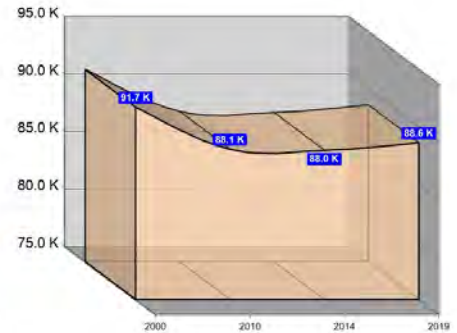
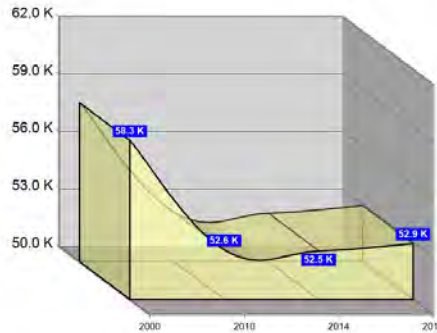
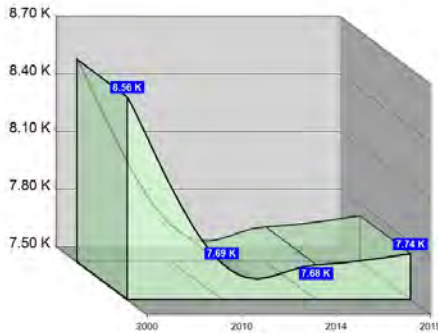
RGRAP3

Colorado Ave

Lorain, OH

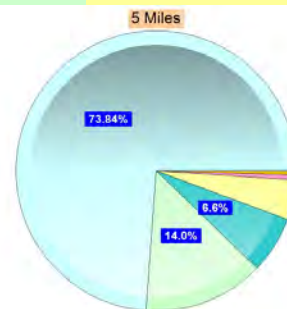
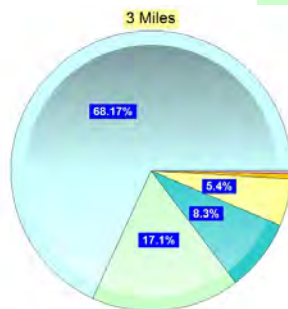
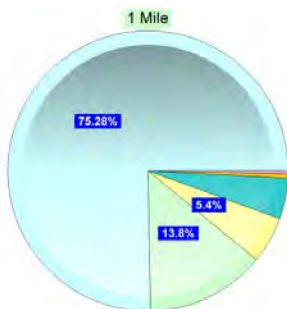
Population

	1 Mile	3 Miles	5 Miles
Estimated Population (2014)	7,680	52,520	87,971
Projected Population (2019)	7,738	52,908	88,615
Census Population (2010)	7,689	52,581	88,070
Census Population (2000)	8,557	58,294	91,722
Projected Annual Growth (2014-2019)	58 0.2%	387 0.1%	644 0.1%
Historical Annual Growth (2010-2014)	-9 -2.8%	-61 -2.7%	-99 -1.0%
Historical Annual Growth (2000-2010)	-868 -1.0%	-5,713 -1.0%	-3,652 -0.4%
Estimated Population Density (2014)	2,447 psm	1,858 psm	1,121 psm
Trade Area Size	3.1 sq mi	28.3 sq mi	78.5 sq mi



Race and Ethnicity (2014)

	1 Mile	3 Miles	5 Miles
Not Hispanic or Latino Population	6,319 82.3%	38,631 73.6%	69,268 78.7%
White	5,012 79.3%	28,700 74.3%	55,188 79.7%
Black or African American	977 15.5%	7,996 20.7%	10,987 15.9%
American Indian or Alaska Native	25 0.4%	166 0.4%	230 0.3%
Asian	28 0.4%	161 0.4%	504 0.7%
Hawaiian or Pacific Islander	- -	2 -	6 -
Other Race	- -	11 -	31 -
Two or More Races	276 4.4%	1,595 4.1%	2,321 3.4%
Hispanic or Latino Population	1,361 17.7%	13,889 26.4%	18,704 21.3%
White	769 56.5%	7,104 51.2%	9,775 52.3%
Black or African American	83 6.1%	1,002 7.2%	1,292 6.9%
American Indian or Alaska Native	11 0.8%	134 1.0%	161 0.9%
Asian	- -	21 0.2%	28 0.1%
Hispanic Hawaiian or Pacific Islander	- -	3 -	5 -
Other Race	360 26.4%	4,366 31.4%	5,732 30.6%
Two or More Races	138 10.1%	1,259 9.1%	1,710 9.1%



White Black or African American American Indian or Alaska Native Asian Hawaiian or Pacific Islander Other Race 2+ Races

This report was produced using data from private and government sources deemed to be reliable. The information herein is provided without representation or warranty.

GRAPHIC PROFILE

2000-2010 Census, 2014 Estimates with 2019 Projections

Calculated using Proportional Block Groups

Lat/Lon: 41.4653/-82.1474

RGRAP3

Colorado Ave

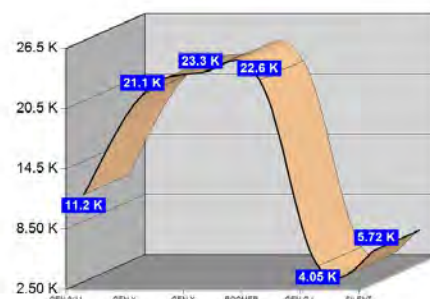
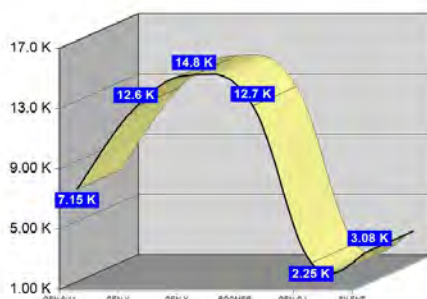
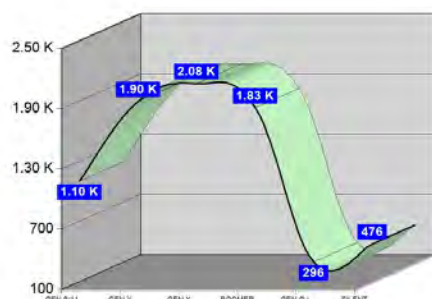
Lorain, OH

Age Distribution (2014)

	1 Mile		3 Miles		5 Miles	
Age Under 5 Years	551	7.2%	3,642	6.9%	5,645	6.4%
Age 5 to 9 Years	552	7.2%	3,513	6.7%	5,548	6.3%
Age 10 to 14 Years	538	7.0%	3,876	7.4%	6,069	6.9%
Age 15 to 19 Years	487	6.3%	4,005	7.6%	6,165	7.0%
Age 20 to 24 Years	513	6.7%	3,623	6.9%	5,811	6.6%
Age 25 to 29 Years	537	7.0%	3,256	6.2%	5,253	6.0%
Age 30 to 34 Years	547	7.1%	3,207	6.1%	5,231	5.9%
Age 35 to 39 Years	449	5.9%	2,970	5.7%	5,014	5.7%
Age 40 to 44 Years	427	5.6%	3,022	5.8%	5,193	5.9%
Age 45 to 49 Years	473	6.2%	3,399	6.5%	5,685	6.5%
Age 50 to 54 Years	526	6.9%	3,746	7.1%	6,461	7.3%
Age 55 to 59 Years	495	6.4%	3,584	6.8%	6,308	7.2%
Age 60 to 64 Years	476	6.2%	3,064	5.8%	5,572	6.3%
Age 65 to 69 Years	336	4.4%	2,283	4.3%	4,250	4.8%
Age 70 to 74 Years	296	3.9%	1,764	3.4%	3,264	3.7%
Age 75 to 79 Years	180	2.3%	1,317	2.5%	2,456	2.8%
Age 80 to 84 Years	149	1.9%	1,127	2.1%	1,979	2.2%
Age 85 Years or Over	148	1.9%	1,121	2.1%	2,067	2.3%
Median Age	35.5		36.3		38.4	

Generation (2014)

Generation 9/11 Millennials (Age Under 10 Years)	1,103	14.4%	7,155	13.6%	11,193	12.7%
Gen Y to Echo Boomers (Age 10 to 29 Years)	2,076	27.0%	14,760	28.1%	23,299	26.5%
Gen Xers (Age 30 to 49 Years)	1,896	24.7%	12,599	24.0%	21,123	24.0%
Baby Boomers (Age 50 to 69 Years)	1,833	23.9%	12,677	24.1%	22,590	25.7%
Silent Generation (Age 70 to 79 Years)	476	6.2%	3,082	5.9%	5,720	6.5%
G.I. Generation (Age 80 Years or Over)	296	3.9%	2,248	4.3%	4,046	4.6%



This report was produced using data from private and government sources deemed to be reliable. The information herein is provided without representation or warranty.

GRAPHIC PROFILE

2000-2010 Census, 2014 Estimates with 2019 Projections

Calculated using Proportional Block Groups

Lat/Lon: 41.4653/-82.1474

RGRAP3

Colorado Ave

Lorain, OH

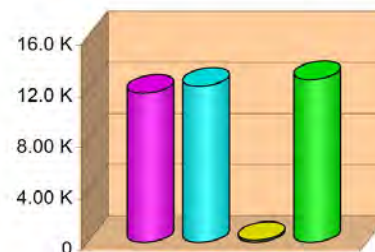
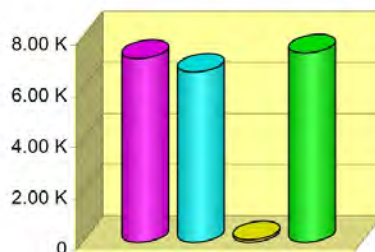
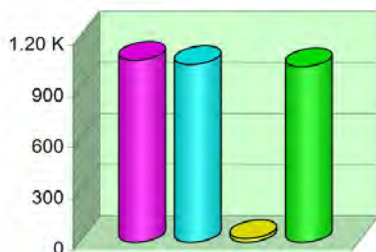
1 Mile

3 Miles

5 Miles

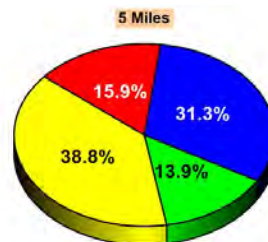
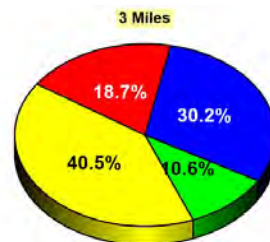
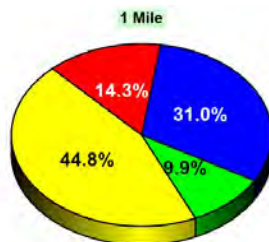
Household Type (2014)

Total Households	3,163	21,345	36,733
Family Households	2,111 33.0%	13,843 31.2%	23,855 33.2%
Family Households with Children	1,068 50.6%	7,188 51.9%	11,659 48.9%
Family Households No Children	1,043 49.4%	6,655 48.1%	12,196 51.1%
Non-Family Households	1,052 33.0%	7,502 31.2%	12,878 33.2%
Non-Family Households with Children	22 2.1%	99 1.3%	151 1.2%
Non-Family Households No Children	1,030 97.9%	7,403 98.7%	12,727 98.8%



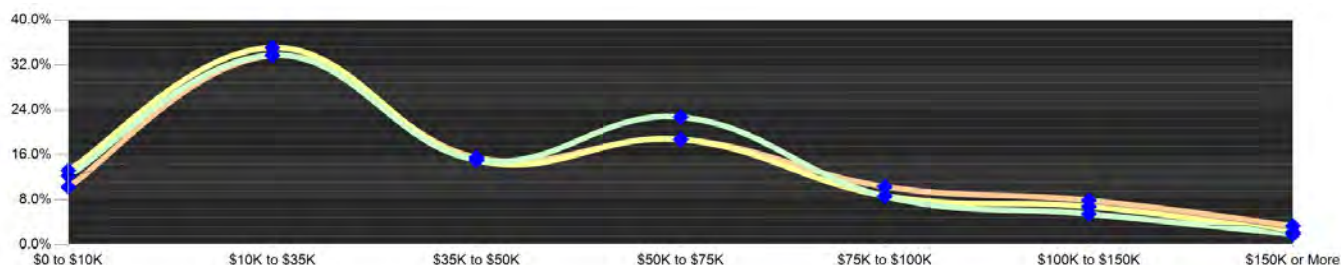
Education Attainment (2014)

Elementary or Some High School	721 14.3%	6,292 18.7%	9,289 15.9%
High School Graduate	2,253 44.8%	13,598 40.5%	22,594 38.8%
Some College or Associate Degree	1,560 31.0%	10,141 30.2%	18,254 31.3%
Bachelor or Graduate Degree	498 9.9%	3,574 10.6%	8,109 13.9%



Household Income (2014)

Estimated Average Household Income	\$41,638	\$41,315	\$46,815
Estimated Median Household Income	\$36,273	\$34,531	\$38,839
HH Income Under \$10,000	389 12.3%	2,828 13.2%	3,789 10.3%
HH Income \$10,000 to \$34,999	1,070 33.8%	7,500 35.1%	12,388 33.7%
HH Income \$35,000 to \$49,999	479 15.1%	3,206 15.0%	5,711 15.5%
HH Income \$50,000 to \$74,999	720 22.8%	4,010 18.8%	6,892 18.8%
HH Income \$75,000 to \$99,999	174 5.5%	1,452 6.8%	2,910 7.9%
HH Income \$100,000 to \$149,999	174 5.5%	1,452 6.8%	2,910 7.9%
HH Income \$150,000 or More	59 1.9%	480 2.3%	1,234 3.4%



This report was produced using data from private and government sources deemed to be reliable. The information herein is provided without representation or warranty.

EXPANDED PROFILE

2000-2010 Census, 2014 Estimates with 2019 Projections

Calculated using Proportional Block Groups

Lat/Lon: 41.4653/-82.1474

RF5

Colorado Ave	1 Mile		3 Miles		5 Miles	
Lorain, OH						
Population						
Estimated Population (2014)	7,680		52,520		87,971	
Projected Population (2019)	7,738		52,908		88,615	
Census Population (2010)	7,689		52,581		88,070	
Census Population (2000)	8,557		58,294		91,722	
Projected Annual Growth (2014 to 2019)	58	0.2%	387	0.1%	644	0.1%
Historical Annual Growth (2010 to 2014)	-9	-	-61	-	-99	-
Historical Annual Growth (2000 to 2010)	-868	-1.0%	-5,713	-1.0%	-3,652	-0.4%
Estimated Population Density (2014)	2,447 <i>psm</i>		1,858 <i>psm</i>		1,121 <i>psm</i>	
Trade Area Size	3.14 <i>sq mi</i>		28.26 <i>sq mi</i>		78.49 <i>sq mi</i>	
Households						
Estimated Households (2014)	3,163		21,345		36,733	
Projected Households (2019)	3,285		22,170		38,153	
Census Households (2010)	3,062		20,667		35,565	
Census Households (2000)	3,262		21,868		35,295	
Estimated Households with Children (2014)	1,090	34.5%	7,287	34.1%	11,810	32.2%
Estimated Average Household Size (2014)	2.43		2.45		2.38	
Average Household Income						
Estimated Average Household Income (2014)	\$43,738		\$44,160		\$49,750	
Projected Average Household Income (2019)	\$46,693		\$47,619		\$53,759	
Estimated Average Family Income (2014)	\$48,639		\$50,556		\$57,970	
Median Household Income						
Estimated Median Household Income (2014)	\$39,932		\$37,085		\$41,300	
Projected Median Household Income (2019)	\$43,198		\$40,103		\$44,729	
Estimated Median Family Income (2014)	\$44,946		\$44,188		\$50,173	
Per Capita Income						
Estimated Per Capita Income (2014)	\$18,026		\$18,000		\$20,825	
Projected Per Capita Income (2019)	\$19,838		\$20,012		\$23,203	
Estimated Per Capita income 5 Year Growth	\$1,812	10.1%	\$2,012	11.2%	\$2,377	11.4%
Estimated Average Household Net Worth (2014)	\$338,484		\$330,433		\$366,131	
Daytime Demos (2014)						
Total Businesses	118		1,230		2,691	
Total Employees	1,965		14,320		32,295	
Company Headquarter Businesses	-	0.2%	5	0.4%	9	0.4%
Company Headquarter Employees	7	0.4%	306	2.1%	1,058	3.3%
Employee Population per Business	16.7		11.6		12.0	
Residential Population per Business	65.1		42.7		32.7	

This report was produced using data from private and government sources deemed to be reliable. The information herein is provided without representation or warranty.

EXPANDED PROFILE

2000-2010 Census, 2014 Estimates with 2019 Projections

Calculated using Proportional Block Groups

Lat/Lon: 41.4653/-82.1474

RF5

Colorado Ave		1 Mile		3 Miles		5 Miles	
Lorain, OH							
Race & Ethnicity							
White (2014)	5,782	75.3%	35,804	68.2%	64,962	73.8%	
Black or African American (2014)	1,060	13.8%	8,998	17.1%	12,279	14.0%	
American Indian or Alaska Native (2014)	37	0.5%	301	0.6%	392	0.4%	
Asian (2014)	28	0.4%	182	0.3%	531	0.6%	
Hawaiian or Pacific Islander (2014)	-	-	4	-	12		
Other Race (2014)	360	4.7%	4,377	8.3%	5,763	6.6%	
Two or More Races (2014)	414	5.4%	2,854	5.4%	4,032	4.6%	
Not Hispanic or Latino Population (2014)	6,319	82.3%	38,631	73.6%	69,268	78.7%	
Hispanic or Latino Population (2014)	1,361	17.7%	13,889	26.4%	18,704	21.3%	
Not Hispanic or Latino Population (2019)	6,271	81.0%	37,930	71.7%	68,446	77.2%	
Hispanic or Latino Population (2019)	1,467	19.0%	14,978	28.3%	20,169	22.8%	
Not Hispanic or Latino Population (2010)	6,396	83.2%	39,385	74.9%	70,299	79.8%	
Hispanic or Latino Population (2010)	1,293	16.8%	13,196	25.1%	17,771	20.2%	
Not Hispanic or Latino Population (2000)	7,487	87.5%	45,817	78.6%	76,128	83.0%	
Hispanic or Latino Population (2000)	1,071	12.5%	12,477	21.4%	15,594	17.0%	
Projected Hispanic Annual Growth (2014 to 2019)	106	1.6%	1,089	1.6%	1,465	1.6%	
Historic Hispanic Annual Growth (2000 to 2014)	290	1.9%	1,411	0.8%	3,109	1.4%	
Age Distribution (2014)							
Age Under 5	551	7.2%	3,642	6.9%	5,645	6.4%	
Age 5 to 9 Years	552	7.2%	3,513	6.7%	5,548	6.3%	
Age 10 to 14 Years	538	7.0%	3,876	7.4%	6,069	6.9%	
Age 15 to 19 Years	487	6.3%	4,005	7.6%	6,165	7.0%	
Age 20 to 24 Years	513	6.7%	3,623	6.9%	5,811	6.6%	
Age 25 to 29 Years	537	7.0%	3,256	6.2%	5,253	6.0%	
Age 30 to 34 Years	547	7.1%	3,207	6.1%	5,231	5.9%	
Age 35 to 39 Years	449	5.9%	2,970	5.7%	5,014	5.7%	
Age 40 to 44 Years	427	5.6%	3,022	5.8%	5,193	5.9%	
Age 45 to 49 Years	473	6.2%	3,399	6.5%	5,685	6.5%	
Age 50 to 54 Years	526	6.9%	3,746	7.1%	6,461	7.3%	
Age 55 to 59 Years	495	6.4%	3,584	6.8%	6,308	7.2%	
Age 60 to 64 Years	476	6.2%	3,064	5.8%	5,572	6.3%	
Age 65 to 74 Years	632	8.2%	4,047	7.7%	7,514	8.5%	
Age 75 to 84 Years	329	4.3%	2,444	4.7%	4,435	5.0%	
Age 85 Years or Over	148	1.9%	1,121	2.1%	2,067	2.3%	
Median Age	35.5		36.3		38.4		
Gender Age Distribution (2014)							
Female Population	3,986	51.9%	27,310	52.0%	45,864	52.1%	
Age 0 to 19 Years	1,032	25.9%	7,417	27.2%	11,531	25.1%	
Age 20 to 64 Years	2,313	58.0%	15,515	56.8%	26,308	57.4%	
Age 65 Years or Over	642	16.1%	4,378	16.0%	8,025	17.5%	
Female Median Age	36.7		37.8		39.9		
Male Population	3,694	48.1%	25,210	48.0%	42,107	47.9%	
Age 0 to 19 Years	1,096	29.7%	7,618	30.2%	11,896	28.3%	
Age 20 to 64 Years	2,131	57.7%	14,357	57.0%	24,221	57.5%	
Age 65 Years or Over	467	12.6%	3,234	12.8%	5,991	14.2%	
Male Median Age	34.1		34.7		36.8		

This report was produced using data from private and government sources deemed to be reliable. The information herein is provided without representation or warranty.

EXPANDED PROFILE

2000-2010 Census, 2014 Estimates with 2019 Projections

Calculated using Proportional Block Groups

Lat/Lon: 41.4653/-82.1474

RF5

Colorado Ave

Lorain, OH

Household Income Distribution (2014)

	1 Mile		3 Miles		5 Miles	
HH Income \$200,000 or More	11	0.3%	116	0.5%	407	1.1%
HH Income \$150,000 to \$199,999	48	1.5%	364	1.7%	828	2.3%
HH Income \$100,000 to \$149,999	174	5.5%	1,452	6.8%	2,910	7.9%
HH Income \$75,000 to \$99,999	273	8.6%	1,868	8.8%	3,808	10.4%
HH Income \$50,000 to \$74,999	720	22.8%	4,010	18.8%	6,892	18.8%
HH Income \$35,000 to \$49,999	479	15.1%	3,206	15.0%	5,711	15.5%
HH Income \$25,000 to \$34,999	394	12.5%	2,759	12.9%	4,750	12.9%
HH Income \$15,000 to \$24,999	407	12.9%	3,102	14.5%	5,155	14.0%
HH Income Under \$15,000	657	20.8%	4,467	20.9%	6,272	17.1%
HH Income \$35,000 or More	1,705	53.9%	11,017	51.6%	20,556	56.0%
HH Income \$75,000 or More	506	16.0%	3,801	17.8%	7,953	21.7%

Housing (2014)

Total Housing Units	3,551		24,053		40,518	
Housing Units Occupied	3,163	89.1%	21,345	88.7%	36,733	90.7%
Housing Units Owner-Occupied	1,966	62.2%	12,492	58.5%	22,707	61.8%
Housing Units, Renter-Occupied	1,196	37.8%	8,853	41.5%	14,026	38.2%
Housing Units, Vacant	389	10.9%	2,708	11.3%	3,785	9.3%

Marital Status (2014)

Never Married	1,799	29.8%	14,201	34.2%	22,994	32.5%
Currently Married	2,320	38.4%	16,210	39.1%	30,046	42.5%
Separated	329	5.5%	2,239	5.4%	3,183	4.5%
Widowed	429	7.1%	3,019	7.3%	5,172	7.3%
Divorced	1,162	19.2%	5,820	14.0%	9,315	13.2%

Household Type (2014)

Population Family	6,224	81.0%	42,380	80.7%	70,678	80.3%
Population Non-Family	1,447	18.8%	9,852	18.8%	16,769	19.1%
Population Group Quarters	9	0.1%	288	0.5%	524	0.6%
Family Households	2,111	66.7%	13,843	64.9%	23,855	64.9%
Non-Family Households	1,052	33.3%	7,502	35.1%	12,878	35.1%
Married Couple with Children	455	19.6%	3,137	19.3%	5,773	19.2%
Average Family Household Size	2.9		3.1		3.0	

Household Size (2014)

1 Person Households	860	27.2%	6,395	30.0%	10,979	29.9%
2 Person Households	1,013	32.0%	6,367	29.8%	11,722	31.9%
3 Person Households	593	18.7%	3,607	16.9%	6,058	16.5%
4 Person Households	407	12.9%	2,576	12.1%	4,390	12.0%
5 Person Households	164	5.2%	1,416	6.6%	2,215	6.0%
6 or More Person Households	126	4.0%	983	4.6%	1,369	3.7%

Household Vehicles (2014)

Households with 0 Vehicles Available	251	7.9%	2,522	11.8%	3,666	10.0%
Households with 1 Vehicles Available	1,332	42.1%	8,988	42.1%	14,741	40.1%
Households with 2 or More Vehicles Available	1,580	49.9%	9,835	46.1%	18,326	49.9%
Total Vehicles Available	4,959		32,748		59,233	
Average Vehicles Per Household	1.6		1.5		1.6	

This report was produced using data from private and government sources deemed to be reliable. The information herein is provided without representation or warranty.

EXPANDED PROFILE

2000-2010 Census, 2014 Estimates with 2019 Projections

Calculated using Proportional Block Groups

Lat/Lon: 41.4653/-82.1474

RF5

Colorado Ave		1 Mile		3 Miles		5 Miles	
Lorain, OH							
Labor Force (2014)							
Estimated Labor Population Age 16 Years or Over	5,934		40,452		69,000		
Estimated Civilian Employed	3,250	54.8%	21,517	53.2%	37,761	54.7%	
Estimated Civilian Unemployed	465	7.8%	2,933	7.3%	4,372	6.3%	
Estimated in Armed Forces	1	-	60	0.1%	83	0.1%	
Estimated Not in Labor Force	2,218	37.4%	15,941	39.4%	26,783	38.8%	
Unemployment Rate	7.8%		7.3%		6.3%		
Occupation (2010)							
Occupation: Population Age 16 Years or Over	3,126		19,958		35,639		
Management, Business, Financial Operations	326	10.4%	1,801	9.0%	3,708	10.4%	
Professional, Related	430	13.7%	3,030	15.2%	6,334	17.8%	
Service	819	26.2%	4,873	24.4%	7,750	21.7%	
Sales, Office	584	18.7%	4,376	21.9%	8,263	23.2%	
Farming, Fishing, Forestry	2	0.1%	95	0.5%	105	0.3%	
Construct, Extraction, Maintenance	306	9.8%	1,555	7.8%	2,580	7.2%	
Production, Transport Material Moving	660	21.1%	4,229	21.2%	6,899	19.4%	
White Collar Workers	1,339	42.8%	9,206	46.1%	18,305	51.4%	
Blue Collar Workers	1,787	57.2%	10,753	53.9%	17,334	48.6%	
Consumer Expenditure (2014)							
Total Household Expenditure	\$127 M		\$859 M		\$1.60 B		
Total Non-Retail Expenditure	\$72.5 M	57.2%	\$491 M	57.2%	\$914 M	57.3%	
Total Retail Expenditure	\$54.2 M	42.8%	\$368 M	42.8%	\$682 M	42.7%	
Apparel	\$6.07 M	4.8%	\$41.2 M	4.8%	\$76.3 M	4.8%	
Contributions	\$4.26 M	3.4%	\$29.2 M	3.4%	\$55.7 M	3.5%	
Education	\$2.77 M	2.2%	\$19.2 M	2.2%	\$35.9 M	2.3%	
Entertainment	\$6.96 M	5.5%	\$47.3 M	5.5%	\$88.3 M	5.5%	
Food and Beverages	\$20.0 M	15.8%	\$136 M	15.8%	\$250 M	15.6%	
Furnishings and Equipment	\$5.29 M	4.2%	\$36.0 M	4.2%	\$67.8 M	4.2%	
Gifts	\$3.11 M	2.5%	\$21.3 M	2.5%	\$40.4 M	2.5%	
Health Care	\$8.17 M	6.4%	\$55.3 M	6.4%	\$102 M	6.4%	
Household Operations	\$4.23 M	3.3%	\$28.9 M	3.4%	\$54.5 M	3.4%	
Miscellaneous Expenses	\$2.18 M	1.7%	\$14.8 M	1.7%	\$27.3 M	1.7%	
Personal Care	\$1.86 M	1.5%	\$12.6 M	1.5%	\$23.3 M	1.5%	
Personal Insurance	\$1.20 M	0.9%	\$8.19 M	1.0%	\$15.5 M	1.0%	
Reading	\$414 K	0.3%	\$2.81 M	0.3%	\$5.24 M	0.3%	
Shelter	\$24.3 M	19.1%	\$165 M	19.2%	\$307 M	19.2%	
Tobacco	\$934 K	0.7%	\$6.28 M	0.7%	\$11.3 M	0.7%	
Transportation	\$25.6 M	20.2%	\$173 M	20.1%	\$321 M	20.1%	
Utilities	\$9.36 M	7.4%	\$63.3 M	7.4%	\$116 M	7.3%	
Educational Attainment (2014)							
Adult Population Age 25 Years or Over	5,032		33,606		58,246		
Elementary (Grade Level 0 to 8)	138	2.7%	1,805	5.4%	2,551	4.4%	
Some High School (Grade Level 9 to 11)	583	11.6%	4,487	13.4%	6,738	11.6%	
High School Graduate	2,253	44.8%	13,598	40.5%	22,594	38.8%	
Some College	1,252	24.9%	7,462	22.2%	13,287	22.8%	
Associate Degree Only	309	6.1%	2,679	8.0%	4,967	8.5%	
Bachelor Degree Only	367	7.3%	2,391	7.1%	5,535	9.5%	
Graduate Degree	131	2.6%	1,183	3.5%	2,574	4.4%	

This report was produced using data from private and government sources deemed to be reliable. The information herein is provided without representation or warranty.

EXPANDED PROFILE

2000-2010 Census, 2014 Estimates with 2019 Projections

Calculated using Proportional Block Groups

Lat/Lon: 41.4653/-82.1474

RF5

Colorado Ave

Lorain, OH

Units In Structure (2010)

	1 Mile		3 Miles		5 Miles	
1 Detached Unit	2,403	78.5%	14,953	72.4%	25,338	71.2%
1 Attached Unit	221	7.2%	1,019	4.9%	1,518	4.3%
2 to 4 Units	279	9.1%	2,142	10.4%	3,049	8.6%
5 to 9 Units	63	2.0%	715	3.5%	1,465	4.1%
10 to 19 Units	42	1.4%	676	3.3%	1,716	4.8%
20 to 49 Units	8	0.2%	218	1.1%	567	1.6%
50 or More Units	33	1.1%	793	3.8%	1,467	4.1%
Mobile Home or Trailer	15	0.5%	150	0.7%	445	1.3%
Other Structure	-	-	-	-	-	-

Homes Built By Year (2010)

Homes Built 2005 or later	50	1.6%	470	2.3%	1,282	3.6%
Homes Built 2000 to 2004	107	3.5%	798	3.9%	1,899	5.3%
Homes Built 1990 to 1999	169	5.5%	1,319	6.4%	2,837	8.0%
Homes Built 1980 to 1989	113	3.7%	1,059	5.1%	2,149	6.0%
Homes Built 1970 to 1979	302	9.9%	2,535	12.3%	5,366	15.1%
Homes Built 1960 to 1969	453	14.8%	2,763	13.4%	5,596	15.7%
Homes Built 1950 to 1959	1,066	34.8%	4,843	23.4%	7,350	20.7%
Homes Built Before 1949	803	26.2%	6,880	33.3%	9,086	25.5%

Home Values (2010)

Home Values \$1,000,000 or More	2	0.1%	19	0.2%	34	0.2%
Home Values \$500,000 to \$999,999	5	0.3%	63	0.5%	153	0.7%
Home Values \$400,000 to \$499,999	8	0.4%	64	0.5%	175	0.8%
Home Values \$300,000 to \$399,999	53	2.8%	273	2.3%	648	3.0%
Home Values \$200,000 to \$299,999	80	4.2%	693	5.8%	2,140	9.8%
Home Values \$150,000 to \$199,999	125	6.6%	1,102	9.2%	3,221	14.7%
Home Values \$100,000 to \$149,999	451	23.8%	3,469	28.9%	6,630	30.3%
Home Values \$70,000 to \$99,999	890	47.0%	4,397	36.6%	5,942	27.2%
Home Values \$50,000 to \$69,999	206	10.9%	1,222	10.2%	1,633	7.5%
Home Values \$25,000 to \$49,999	56	2.9%	463	3.9%	697	3.2%
Home Values Under \$25,000	19	1.0%	251	2.1%	579	2.7%
Owner-Occupied Median Home Value	\$95,151		\$102,909		\$120,587	
Renter-Occupied Median Rent	\$560		\$513		\$533	

Transportation To Work (2010)

Drive to Work Alone	2,578	83.6%	16,201	82.3%	29,543	84.5%
Drive to Work in Carpool	381	12.4%	2,586	13.1%	3,739	10.7%
Travel to Work by Public Transportation	10	0.3%	172	0.9%	332	1.0%
Drive to Work on Motorcycle	6	0.2%	21	0.1%	57	0.2%
Walk or Bicycle to Work	29	0.9%	304	1.5%	468	1.3%
Other Means	14	0.4%	74	0.4%	137	0.4%
Work at Home	66	2.1%	323	1.6%	665	1.9%

Travel Time (2010)

Travel to Work in 14 Minutes or Less	773	25.6%	5,239	27.1%	9,342	27.3%
Travel to Work in 15 to 29 Minutes	1,343	44.5%	7,667	39.6%	13,550	39.5%
Travel to Work in 30 to 59 Minutes	871	28.9%	5,626	29.1%	9,786	28.6%
Travel to Work in 60 Minutes or More	30	1.0%	827	4.3%	1,599	4.7%
Average Minutes Travel to Work	20.5		21.6		21.6	

This report was produced using data from private and government sources deemed to be reliable. The information herein is provided without representation or warranty.