

Corner of W 6th St & Queens Rd

5240 W. 6th St

Land For Sale

Asking Price: \$2,450,000

14.4 Acres

Lawrence, Kansas

Site Overview

This 14-acre site, situated just west of 6th Street and Wakarusa Drive, is ideally located near Rock Chalk Park and major retailers such as Walmart, Sprouts, PetSmart, and CVS. The site benefits from high visibility and easy access via city and KU bus routes. Rock Chalk Park, featuring KU tennis, soccer, and softball fields, as well as a free city fitness center and track, is less than a mile away.

14.4 Acres

Office | Retail | Medical

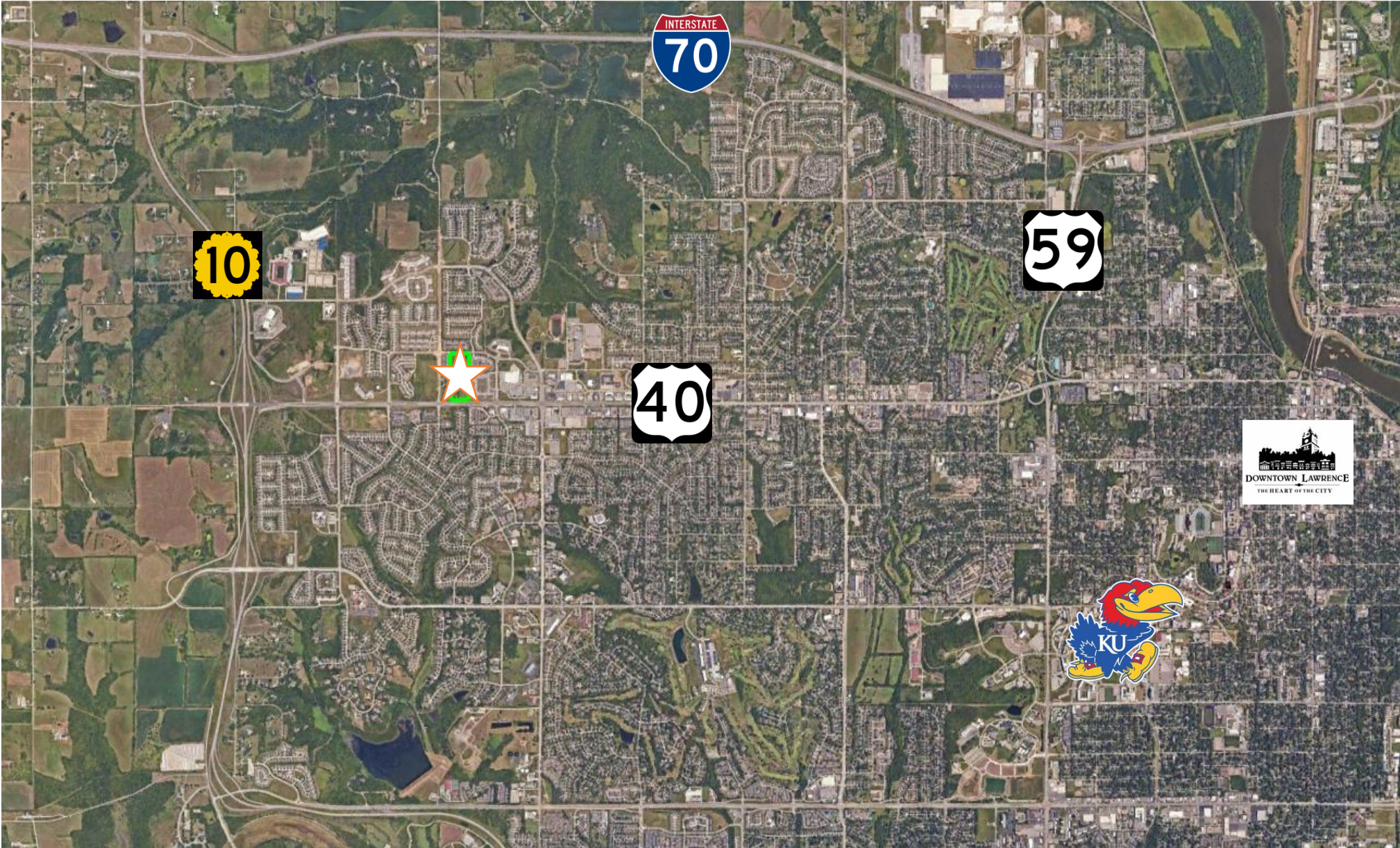
Zoned UR

5240 W 6th St
Lawrence, Kansas

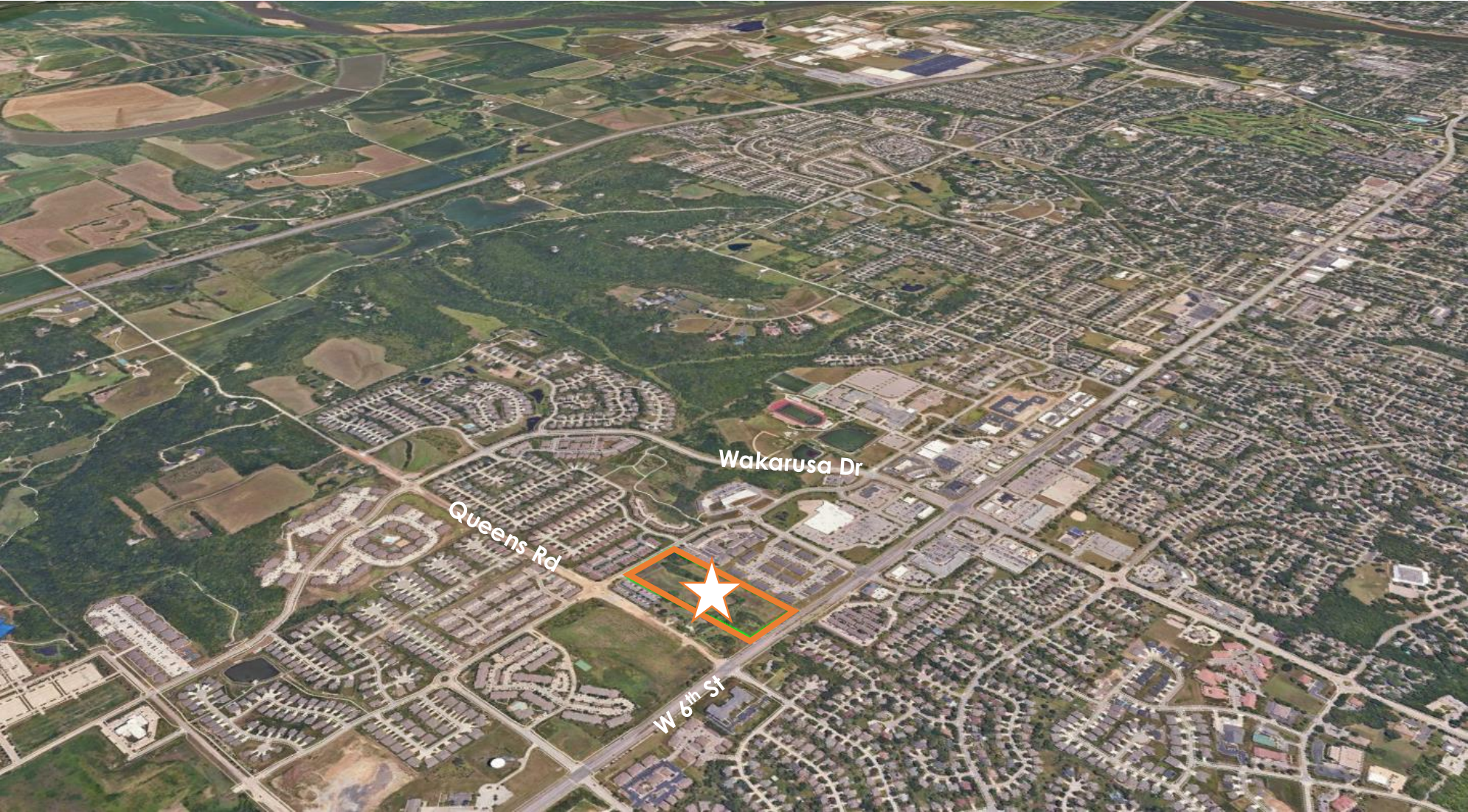
Asking Price: \$2,450,000



Site Aerials



Site Aerials



Demographics

Area Profile



Population (5 Mile)

89,345



Average Household Income (5 Mile)

\$88,400



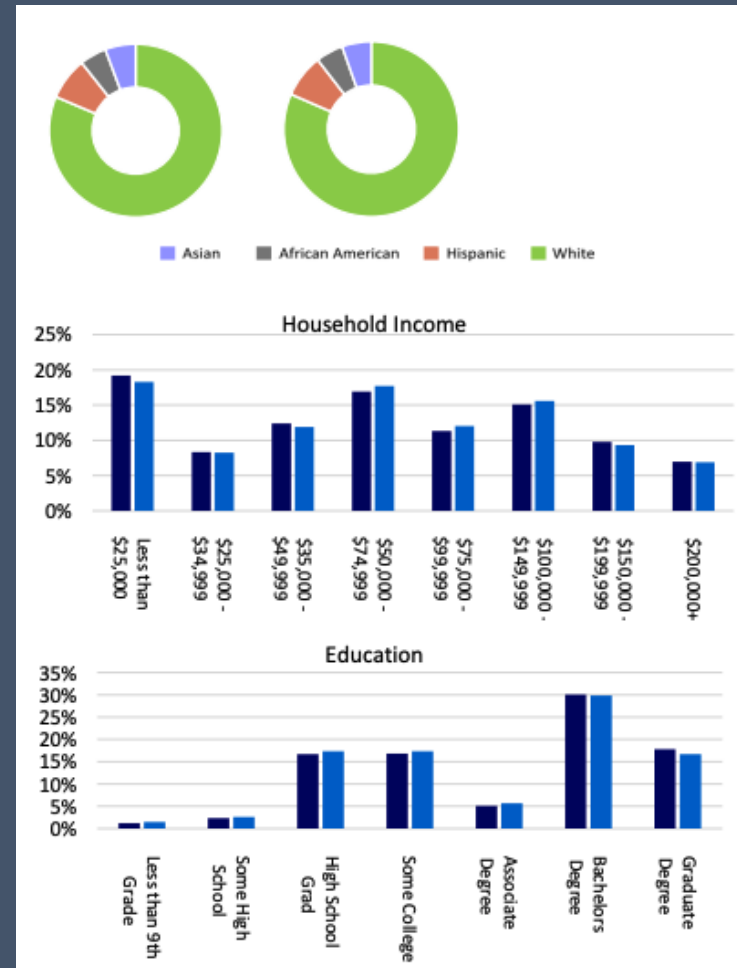
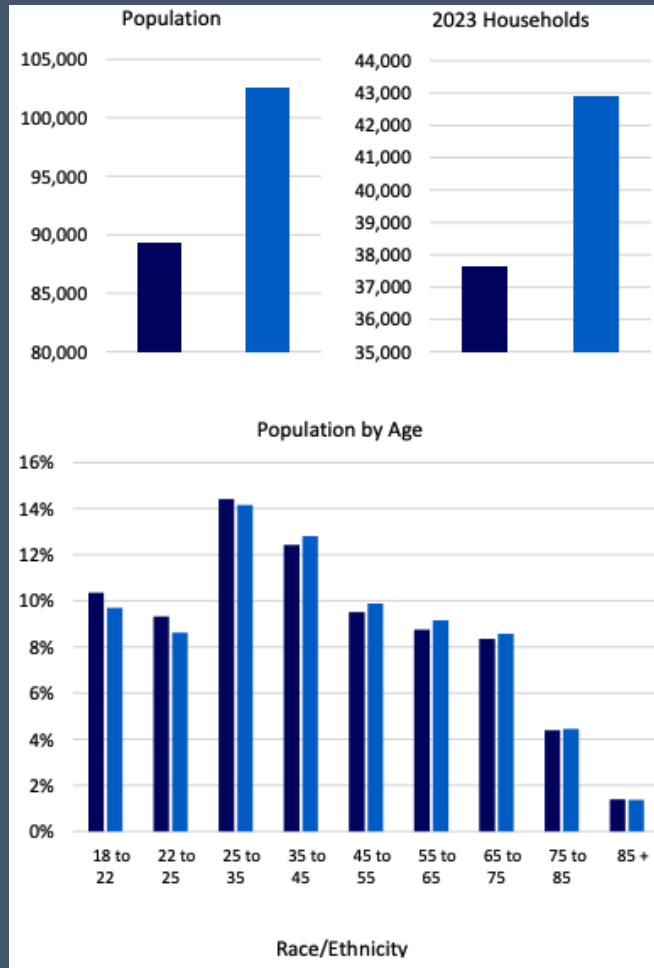
Average Age (5 Mile)

36.2



Traffic Count

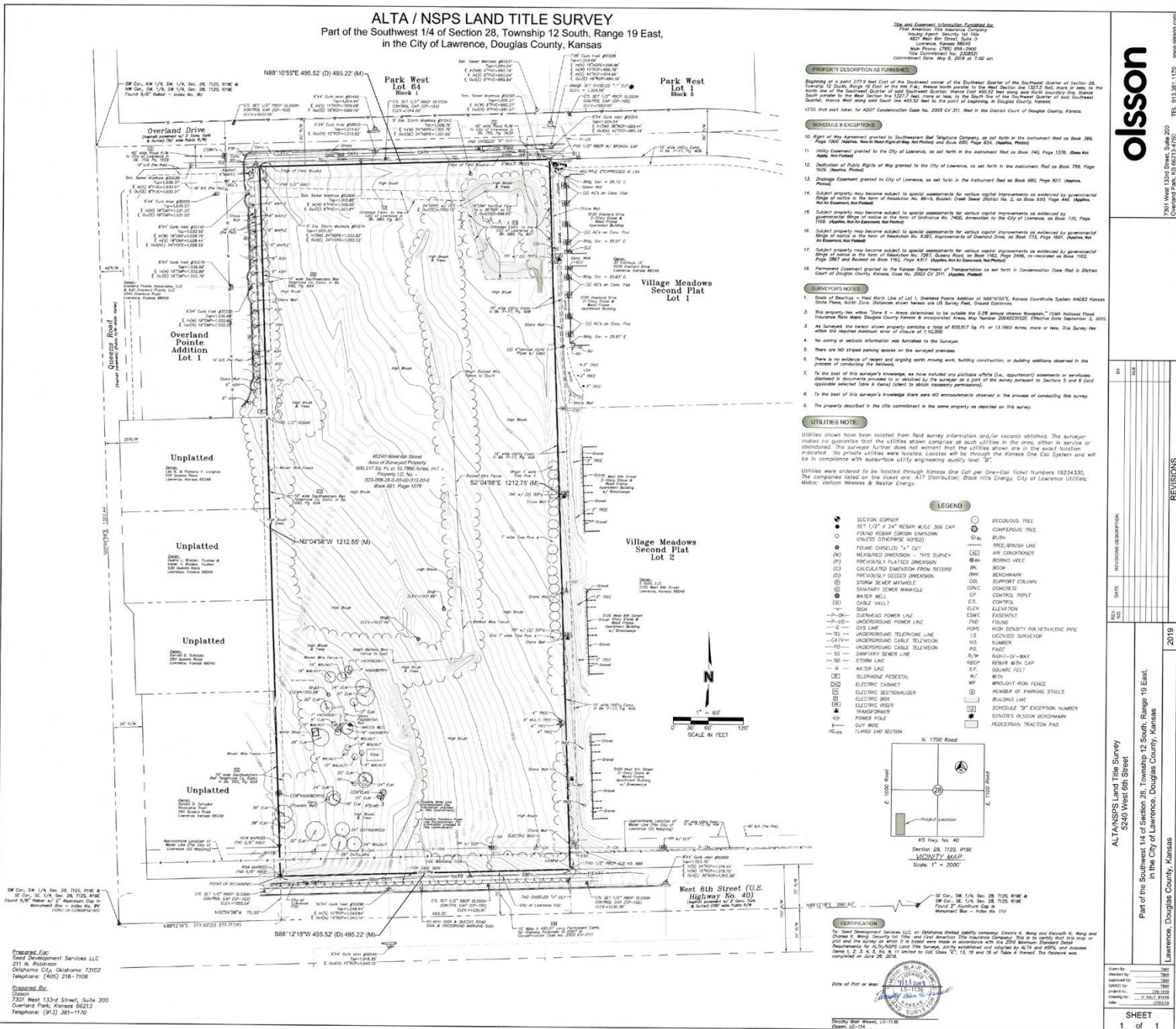
17,551

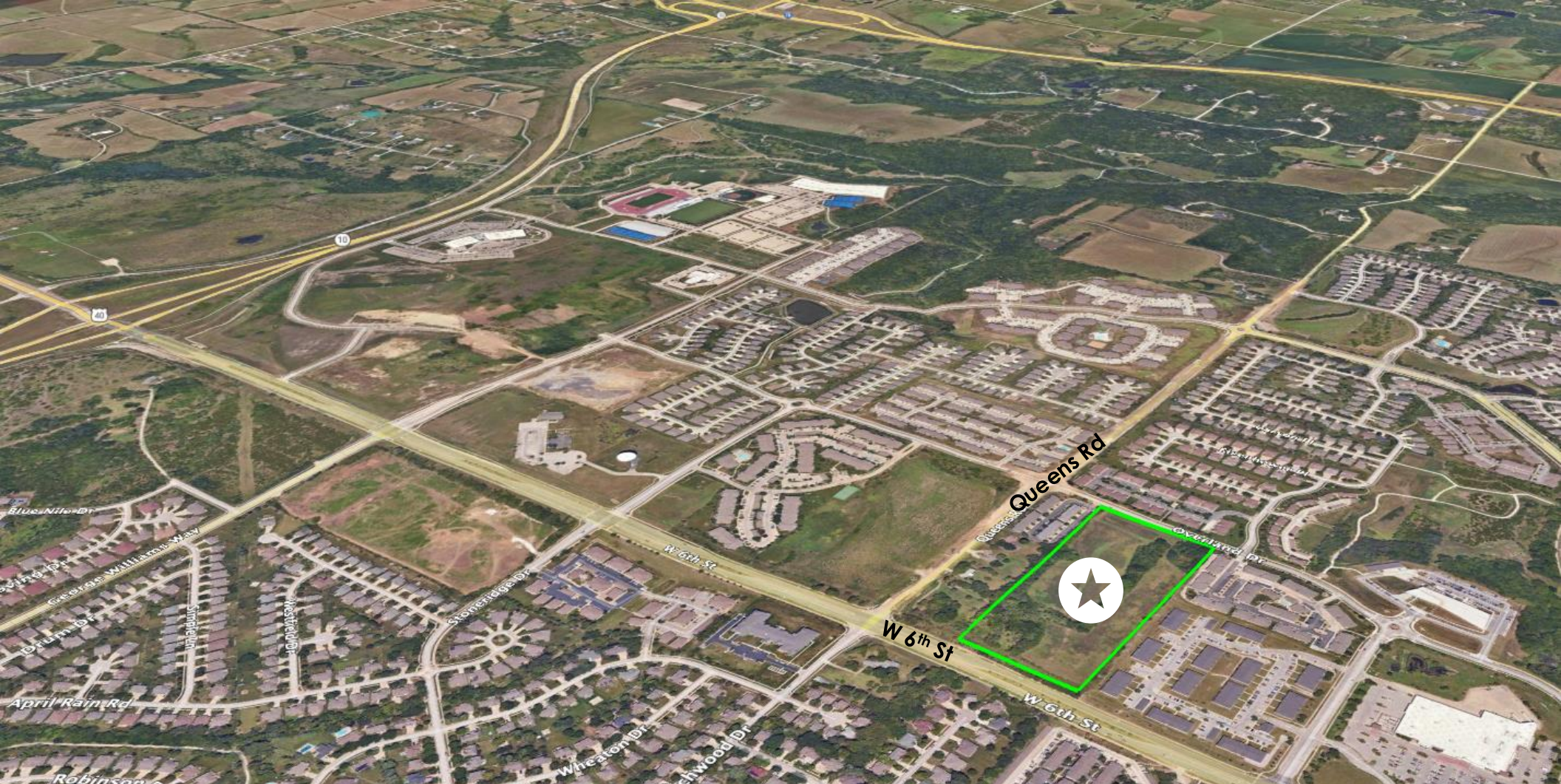


Legend

- 5 Mile Radius
- 20 Minute Drive Time

Site Survey





LAWRENCE SITE

Looking for more info?

To request additional information on this property, or to submit an offer, [click here](#).