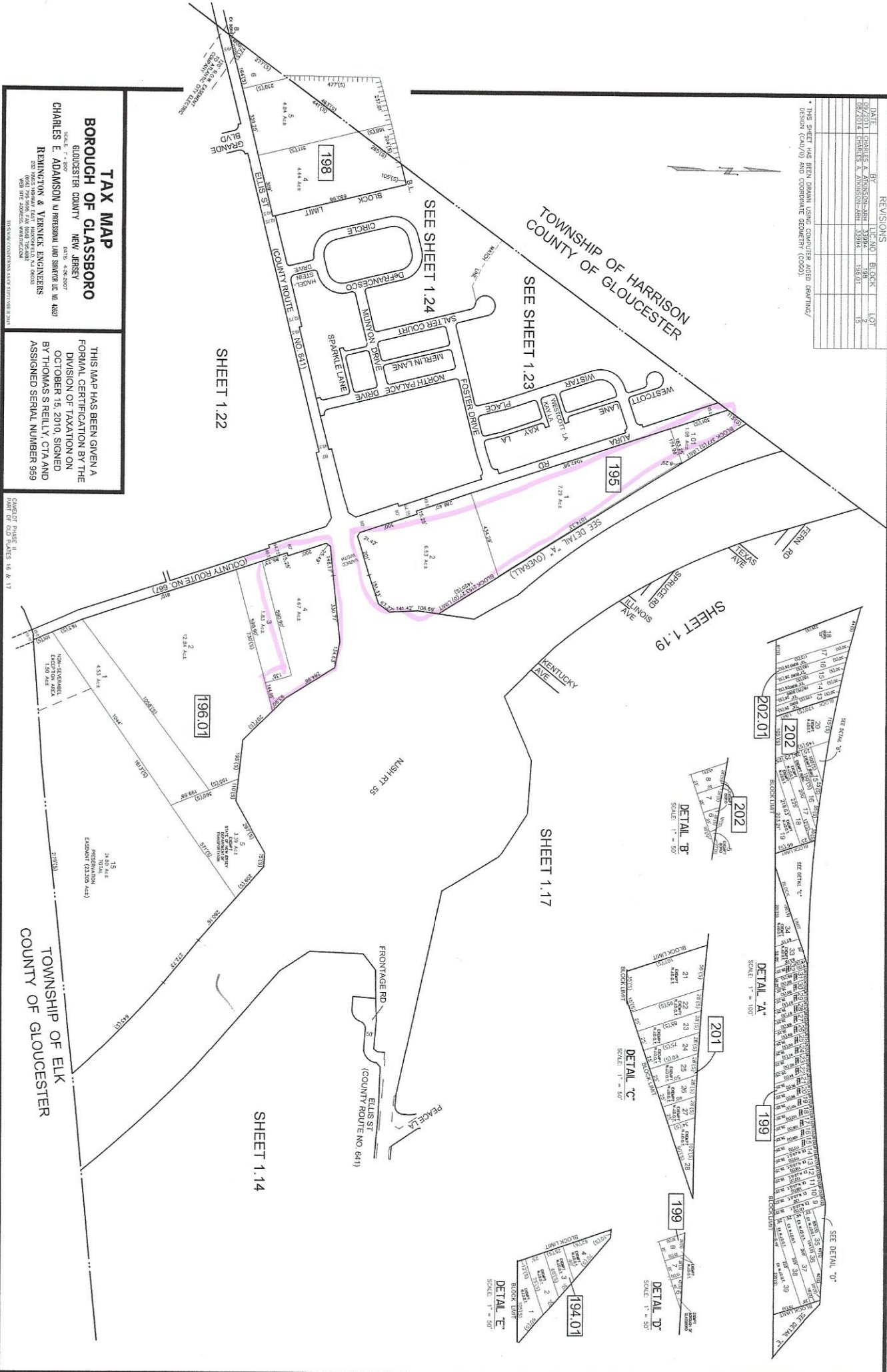


DATE	BY	REVISIONS	BLOCK	LOT
12/2/2011	CHARLES E. ADAMSON-JR		3399A	2
12/2/2011	CHARLES E. ADAMSON-JR		3399A	15

* THIS SHEET HAS BEEN DRAWN USING COMPUTER AIDED DRAFTING / DESIGN (CAD/D) AND COORDINATE GEOMETRY (COGO)



TAX MAP
BOROUGH OF GLASSBORO
 GLoucester County NEW JERSEY
 DATE: 7-1-2007
 CHARLES E. ADAMSON, JR. PROFESSIONAL LAND SURVEYOR, L.S. # 4287
 REHINGTON & YANNICK ENGINEERS
 1000 NEW YORK AVE. (404) 732-8282
 1000 NEW YORK AVE. (404) 732-8282
 1000 NEW YORK AVE. (404) 732-8282

THIS MAP HAS BEEN GIVEN A
 FORMAL CERTIFICATION BY THE
 DIVISION OF TAXATION ON
 OCTOBER 15, 2010, SIGNED
 BY THOMAS S. REILLY, CTA AND
 ASSIGNED SERIAL NUMBER 999

CHARGE: PAGES 14, 15, 16 & 17
 1991 OF CAD PAGES 14 & 17