

# Market Square | FOR LEASE

1442 STATE ROAD 436, CASSELBERRY, FL 32707



FOR MORE INFORMATION  
[MILLENNIA-PARTNERS.COM](http://MILLENNIA-PARTNERS.COM)

PRESENTED BY

**JOSIAH MOORE**

407.304.8485

[jmoore@millenia-partners.com](mailto:jmoore@millenia-partners.com)

IMMEDIATELY AVAILABLE RETAIL SPACE!

1442 STATE ROAD 436, CASSELBERRY, FL 32707

# Market Square Shopping Center



## OFFERING SUMMARY

Center Size:	120,000 SF
Lot Size:	9.83 Acres
Availability	1000-2000 SF
Renovated:	2025
Use:	Retail/Shop
Frontage:	SR-436
Submarket:	Casselberry
Traffic Count:	113,242 (Hard Corner)

## LOCATION OVERVIEW

Market Square Shopping Center is conveniently located approximately eleven miles north of the Orlando International Airport, and seven miles North-East of the Orlando Central Business District. Market Square is one of the larger centers along the State Road 436 (Semoran Boulevard) corridor. It is located in the City of Casselberry with the surrounding area characterized by a mixture of residential and commercial uses.

Direct access to and from the property can be made by State Road 436. This eight-lane highway averages 113,242 cars per day and is designed to facilitate traffic flow in the North-South direction and changing to East-West within two miles of the property.

State Road 436 is heavily developed with commercial properties such as office/retail buildings, restaurants, car dealerships, banks, and service stations. In addition, Howell Branch Road, a six-lane road with 59,660 cars per day serves as an East-West traffic corridor just south of the Center.

### SPACES

### LEASE RATE

### SPACE SIZE

Suite 1000	\$18.00 SF/yr	1,000 - 2,000 SF
Suite 1008	\$18.00 SF/yr	1,000 - 2,000 SF

PRESENTED BY  
**JOSIAH MOORE**  
407.304.8485  
jmoore@millenia-partners.com

RETAIL PROPERTY

# For Lease

IMMEDIATELY AVAILABLE RETAIL SPACE!

1442 STATE ROAD 436, CASSELBERRY, FL 32707

# Market Square Shopping Center



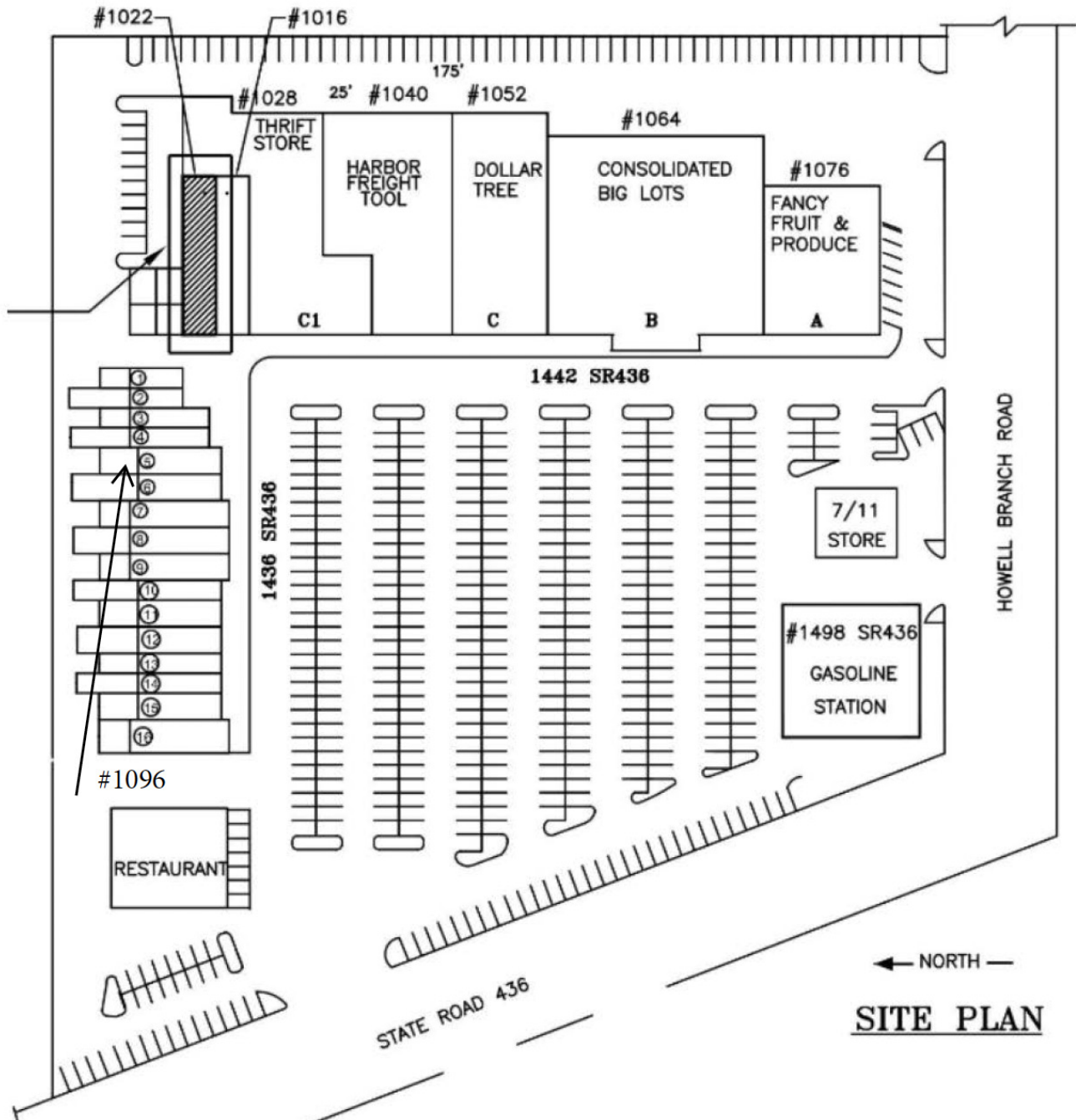
PRESENTED BY  
**JOSIAH MOORE**  
407.304.8485  
jmoore@millenia-partners.com

RETAIL PROPERTY  
**For Lease**

# MARKET SQUARE SITE PLAN!

1442 STATE ROAD 436, CASSELBERRY, FL 32707

# Market Square Shopping Center



1442 SR-436, Casselberry, FL 32707

PRESENTED BY  
**JOSIAH MOORE**  
407.304.8485  
jmoore@millenia-partners.com

RETAIL PROPERTY

# For Lease

IMMEDIATE RETAILER MAP!

1442 STATE ROAD 436, CASSELBERRY, FL 32707

# Market Square Shopping Center



Google

Map data ©2024 Google Imagery ©2024 Airbus, Maxar Technologies

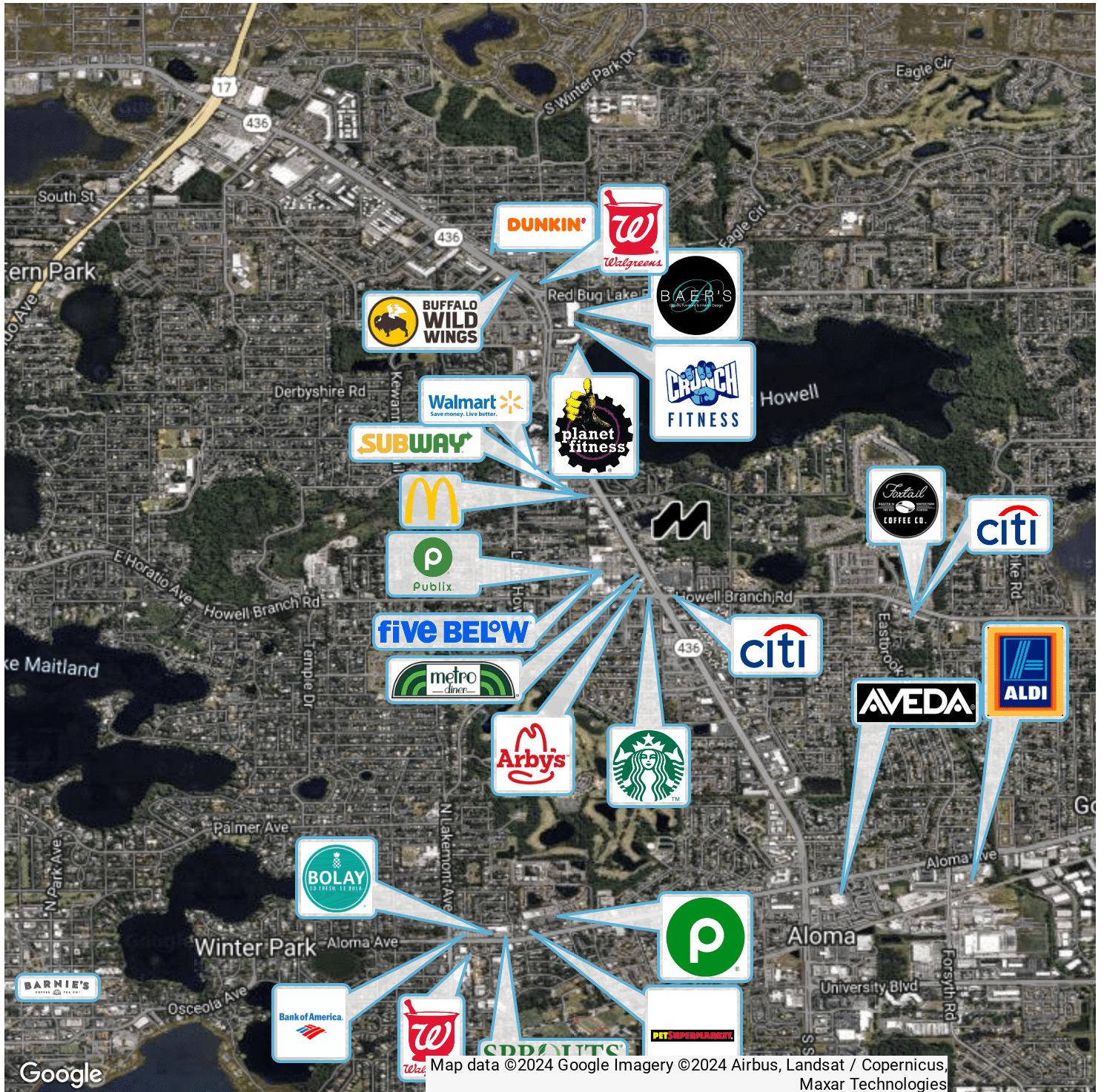
PRESENTED BY  
**JOSIAH MOORE**  
407.304.8485  
jmoore@millenia-partners.com

RETAIL PROPERTY  
**For Lease**

# SUBMARKET MAP

1442 STATE ROAD 436, CASSELBERRY, FL 32707

# Market Square Shopping Center



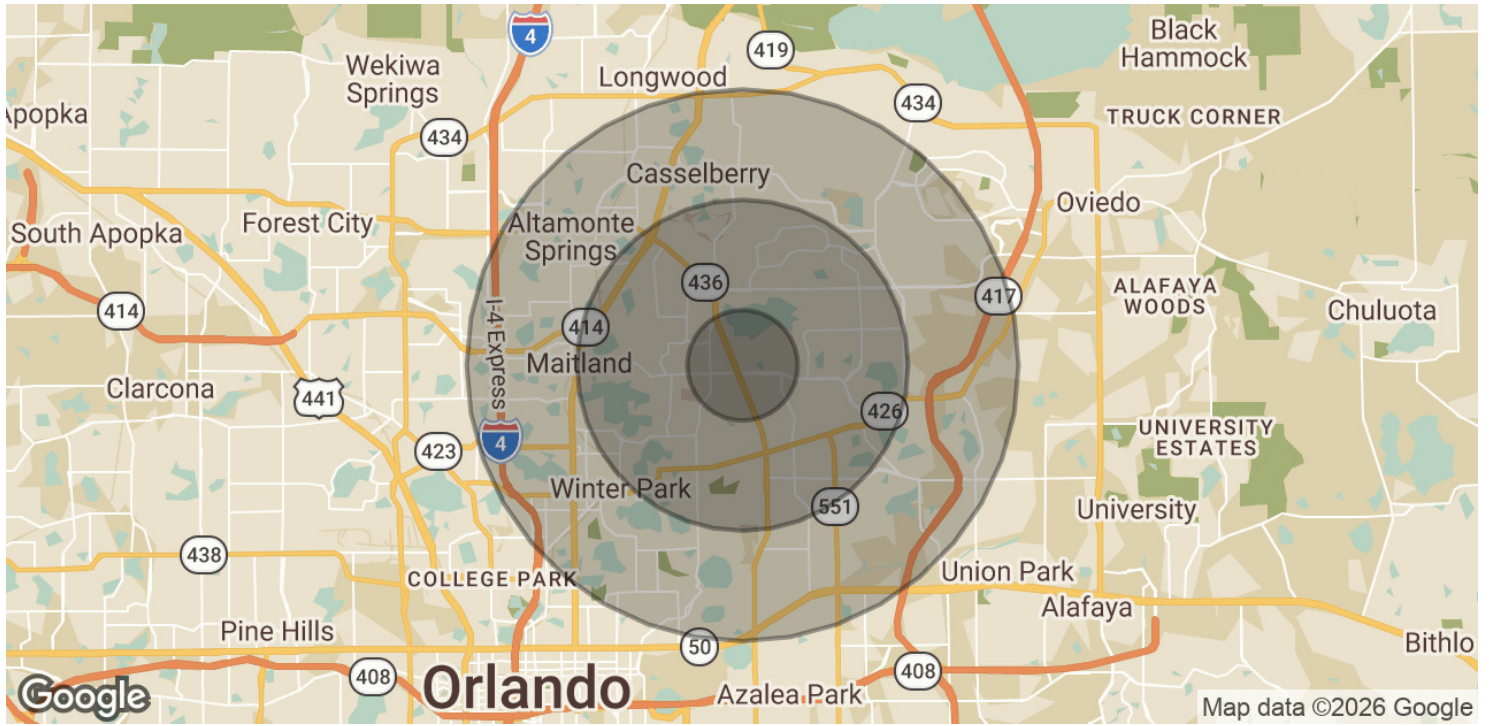
PRESENTED BY  
**JOSIAH MOORE**  
407.304.8485  
jmoore@millenia-partners.com

RETAIL PROPERTY  
**For Lease**

# DEMOGRAPHICS MAP & REPORT

1442 STATE ROAD 436, CASSELBERRY, FL 32707

# Market Square Shopping Center



## POPULATION

	1 MILE	3 MILES	5 MILES
Total Population	10,508	95,847	231,416
Average Age	39.7	39.0	37.9
Average Age (Male)	37.4	36.8	36.4
Average Age (Female)	41.1	41.2	39.7

## HOUSEHOLDS & INCOME

	1 MILE	3 MILES	5 MILES
Total Households	4,708	38,369	91,646
# of Persons per HH	2.2	2.5	2.5
Average HH Income	\$56,326	\$77,638	\$75,867
Average House Value	\$232,707	\$311,060	\$328,455

## TRAFFIC COUNTS

Howell Branch Rd & SR-436	113,242/day
---------------------------	-------------

\* Demographic data derived from 2020 ACS - US Census

PRESENTED BY  
**JOSIAH MOORE**  
 407.304.8485  
 jmoore@millenia-partners.com

RETAIL PROPERTY  
**For Lease**