

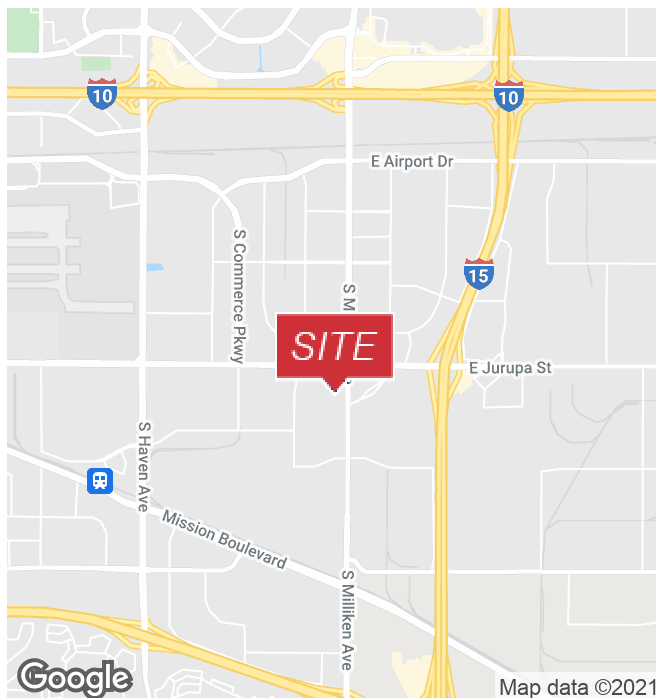


## 1500 S Milliken Ave, Suite B

Ontario, CA 91761

### Property Highlights

- Class A state-of-the-art industrial park
- 1 DH (truck well)
- 1 GL
- Office: 844 SF
- Mezzanine: 896 SF (not included in the 7,717 square feet)
- Excellent Ontario location
- Easy freeway accessibility via CA-60, I-10, and I-15
- 22' clear height
- Fully sprinklered – .45 GPM/3,000
- Built in 2000
- M2 zoning
- Available September 1, 2021



#### Jack Chang

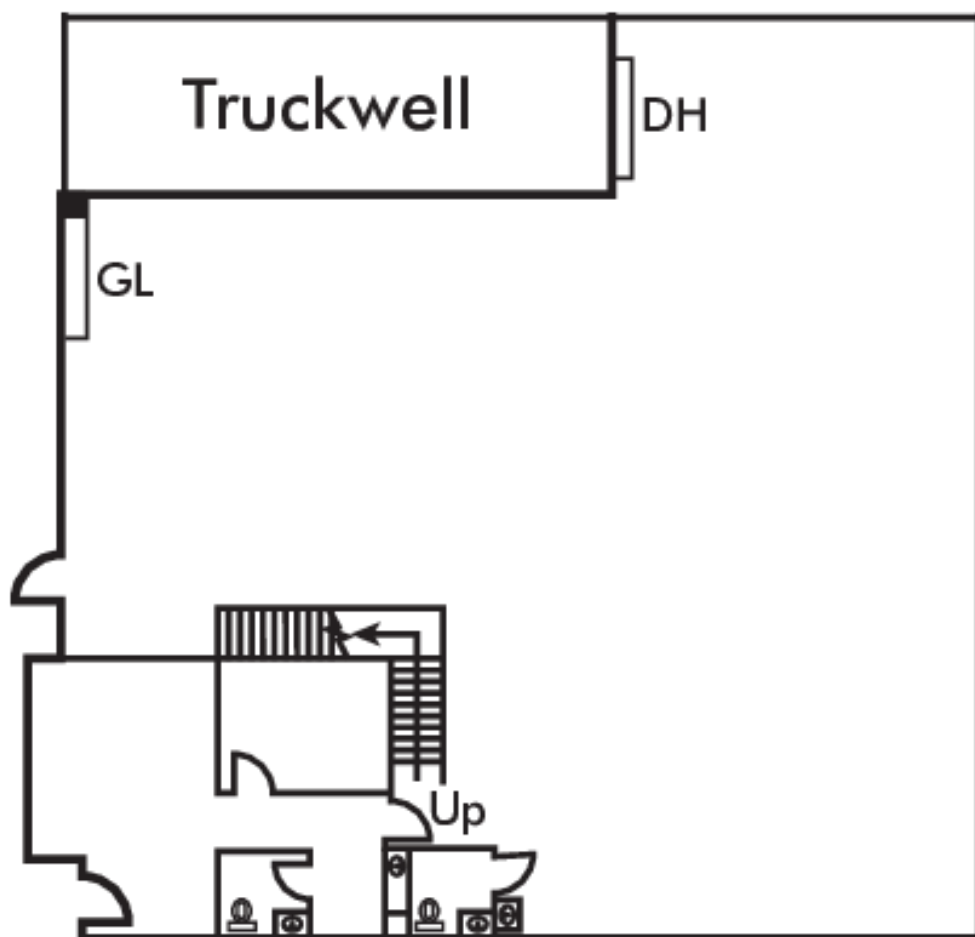
Vice President | 626.512.6337

jchang@naicapital.com | CalDRE #01825984



**1500 MILLIKEN AVE, SUITE B | ONTARIO, CA**

**FIRST FLOOR:**



**SUITE DETAILS:**

Total SF:	7,717 SF
Office SF:	844 SF
Mezzanine SF:	896 SF
Loading:	1 DH/1 GL

**SECOND FLOOR:**

