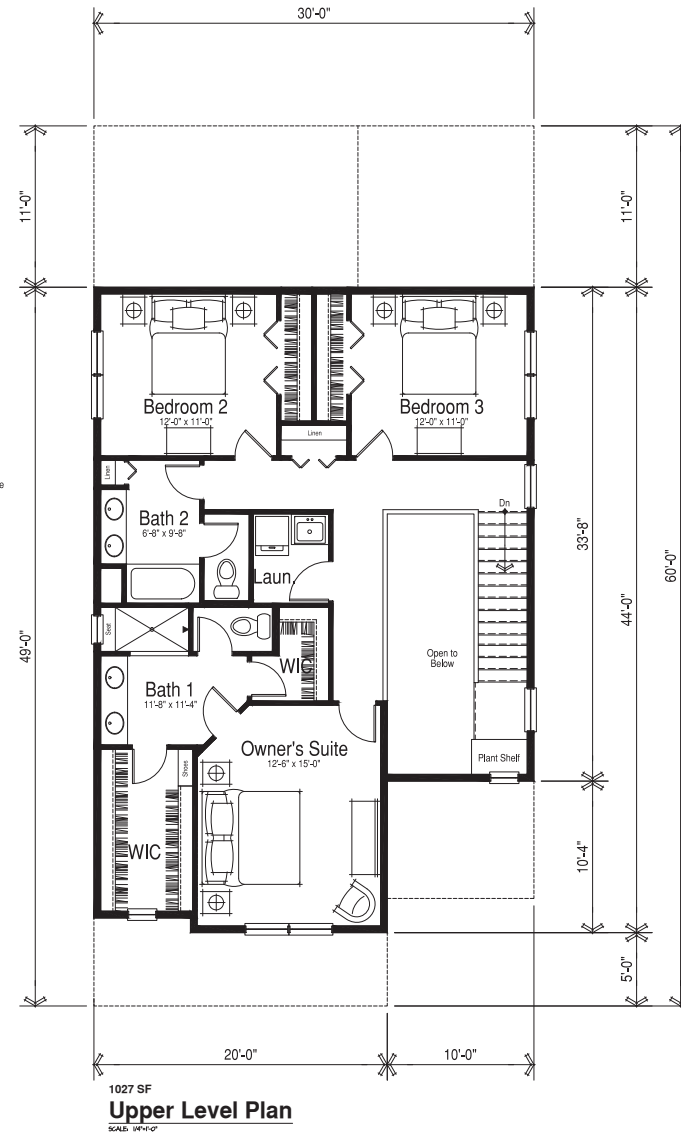
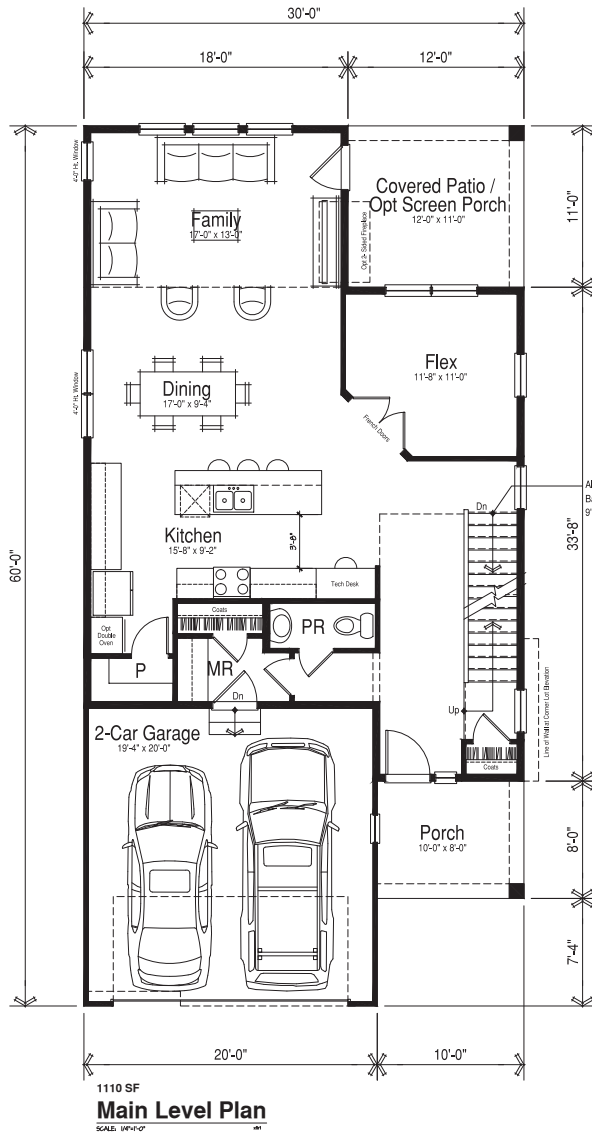


General Notes:

- 1.) Ceiling Heights Shall Be 9'-0" Tall (Approx) on Main and Upper Floors
- 2.) 9'-0" Tall (Approx) Full / Unfinished Basements Are Included With All Homes
- 3.) Provide Basement Windows Per Code
- 4.) Area Ways Where Required for Basement Windows May Project Into Side-Yards
- 5.) Fireplaces May Encroach 18" Into Side and Rear-Yards



Floor Plans: Plan 2 - 2137 SF
Standard 3 Bedroom Model

Single Family Prototype
SF160555

Dubin Consulting, Inc.

bsbdesign.com
The drawings presented are illustrative of character and design intent only, and are subject to change based upon final design considerations (i.e. applicable codes, structural, and MEP design requirements, unit plan / floor plan changes, etc.)



02-03-2017
© 2017 BSB Design, Inc.