

# LAKE ELMO ELEMENTARY SCHOOL

11030 Stillwater Blvd Lake Elmo, MN 55042



FOR MORE INFORMATION CONTACT:

**BRIAN ZELLER**  
C: 612.325.3038  
[bzeller@ccim.net](mailto:bzeller@ccim.net)

**STEVE OGREN**  
C: 651.485.8716  
[sogren@telusproperties.com](mailto:sogren@telusproperties.com)

# Executive Summary



© 2025 Airbus, Landsat / Copernicus, Maxar Technologies, USDA/FPAC/GEO

**SALE PRICE** **\$5,000,000**

## OFFERING SUMMARY

Available SF:	82,570 SF
Acreage:	12.86 Acres
PID #: 13.029.21.22.0001	2.51 Acres
PID #: 13.029.21.22.0004	4.64 Acres
PID #: 13.029.21.23.0001	3.00 Acres
PID #: 13.029.21.23.0002	1.65 Acres
PID #: 13.029.21.23.0003	1.06 Acres
Original Structure Built:	1920
Additions:	12 separate renovations and additions
Zoned:	I-2
City Sewer And Water	

## PROPERTY OVERVIEW

This building is currently operating as the Lake Elmo Elementary school. The Stillwater School District plans to vacate this facility in late Spring 2026 when it plans to move into a new facility which is currently under construction.

**This facility offers a unique opportunity for development.** It is located in the heart of Lake Elmo which is one of the fastest growing cities in the state of MN.

The building offers many traditional elementary school amenities including a wide array of classroom configurations, offices, gymnasium, cafeteria, etc. The exterior of the building offers large parking areas, playground area, two separate ball fields and a large open grass surface area

## FOR MORE INFORMATION CONTACT:

**BRIAN ZELLER**  
C: 612.325.3038  
bzeller@ccim.net

**STEVE OGREN**  
C: 651.485.8716  
sogren@telusproperties.com



No warranty or representation, express or implied, is made to the accuracy or completeness of the information contained herein and same is submitted subject to errors, omissions, change of price, rental, or other conditions, withdrawal without notice and to any special listing conditions imposed by the property owner(s). We make no representations to the as to the condition of the property in question.



## Additional Photos



**BRIAN ZELLER**  
C: 612.325.3038  
bzeller@ccim.net

**STEVE OGREN**  
C: 651.485.8716  
sogren@telusproperties.com

**telus** PROPERTY  
SERVICES+  
SOLUTIONS

No warranty or representation, express or implied, is made to the accuracy or completeness of the information contained herein and same is submitted subject to errors, omissions, change of price, rental, or other conditions, withdrawal without notice and to any special listing conditions imposed by the property owner(s). We make no representations to the as to the condition of the property in question.



## Additional Photos



**BRIAN ZELLER**  
C: 612.325.3038  
bzeller@ccim.net

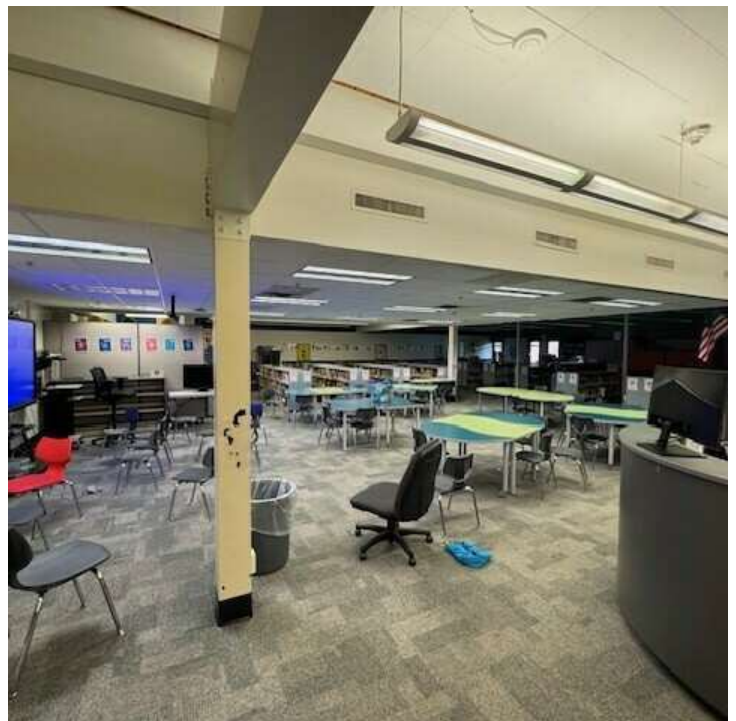
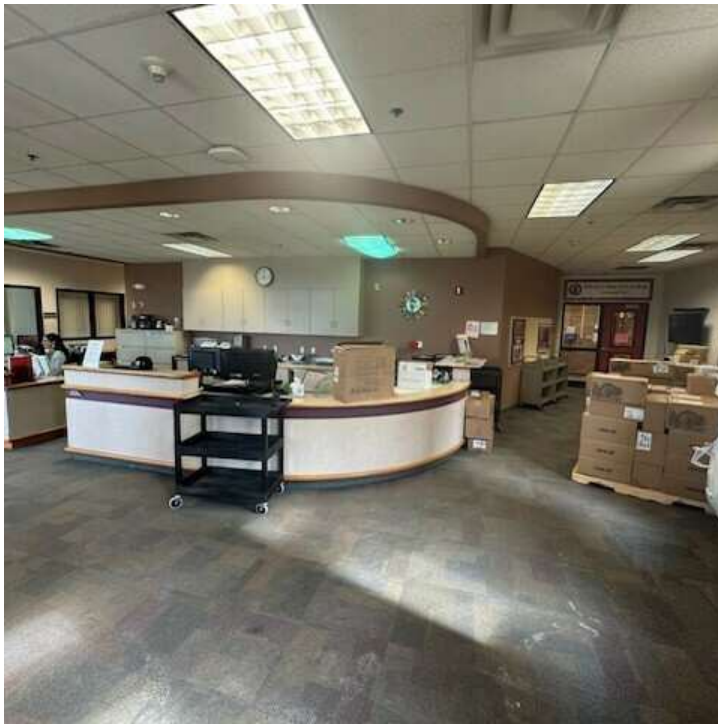
**STEVE OGREN**  
C: 651.485.8716  
sogren@telusproperties.com

**telus** PROPERTY  
SERVICES +  
SOLUTIONS

No warranty or representation, express or implied, is made to the accuracy or completeness of the information contained herein and same is submitted subject to errors, omissions, change of price, rental, or other conditions, withdrawal without notice and to any special listing conditions imposed by the property owner(s). We make no representations to the as to the condition of the property in question.



## Additional Photos



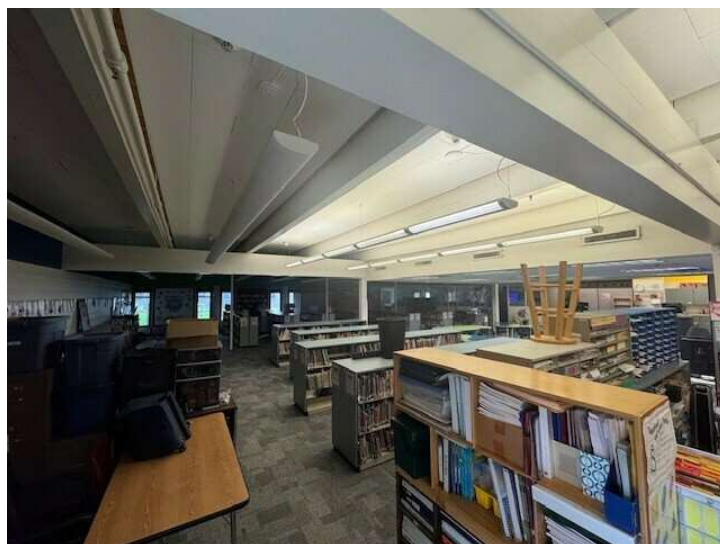
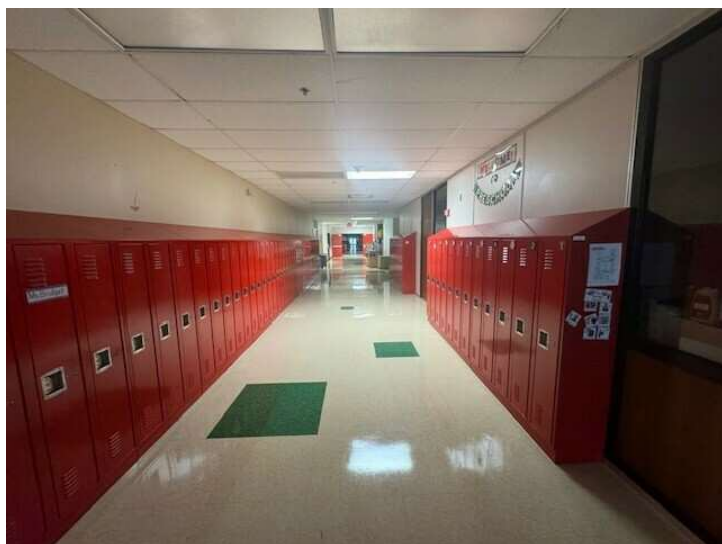
**BRIAN ZELLER**  
C: 612.325.3038  
bzeller@ccim.net

**STEVE OGREN**  
C: 651.485.8716  
sogren@telusproperties.com

No warranty or representation, express or implied, is made to the accuracy or completeness of the information contained herein and same is submitted subject to errors, omissions, change of price, rental, or other conditions, withdrawal without notice and to any special listing conditions imposed by the property owner(s). We make no representations to the as to the condition of the property in question.

**telus** PROPERTY  
SERVICES+  
SOLUTIONS

## Additional Photos



**BRIAN ZELLER**  
C: 612.325.3038  
bzeller@ccim.net

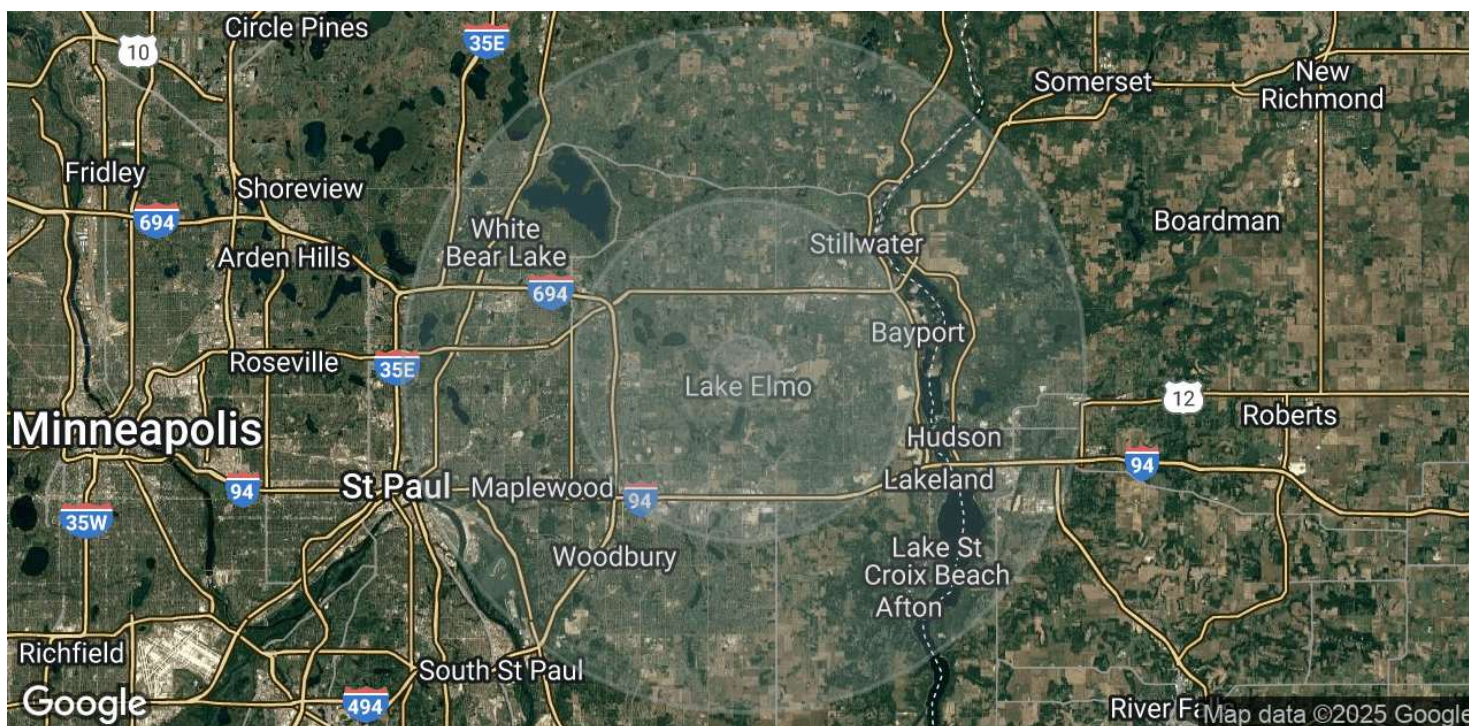
**STEVE OGREN**  
C: 651.485.8716  
sogren@telusproperties.com

No warranty or representation, express or implied, is made to the accuracy or completeness of the information contained herein and same is submitted subject to errors, omissions, change of price, rental, or other conditions, withdrawal without notice and to any special listing conditions imposed by the property owner(s). We make no representations to the as to the condition of the property in question.

**telus** PROPERTY  
SERVICES+  
SOLUTIONS



# Demographics Map & Report



POPULATION	1 MILE	5 MILES	10 MILES
Total Population	1,803	72,470	417,242
Average Age	40	42	40
Average Age (Male)	40	41	39
Average Age (Female)	41	42	41

HOUSEHOLDS & INCOME	1 MILE	5 MILES	10 MILES
Total Households	627	27,582	155,260
# of Persons per HH	2.9	2.6	2.7
Average HH Income	\$237,309	\$155,782	\$129,870
Average House Value	\$694,361	\$493,881	\$413,600

Demographics data derived from AlphaMap

**BRIAN ZELLER**  
C: 612.325.3038  
bzeller@ccim.net

**STEVE OGREN**  
C: 651.485.8716  
sogren@telusproperties.com

**telus** PROPERTY  
SERVICES +  
SOLUTIONS

No warranty or representation, express or implied, is made to the accuracy or completeness of the information contained herein and same is submitted subject to errors, omissions, change of price, rental, or other conditions, withdrawal without notice and to any special listing conditions imposed by the property owner(s). We make no representations to the as to the condition of the property in question.