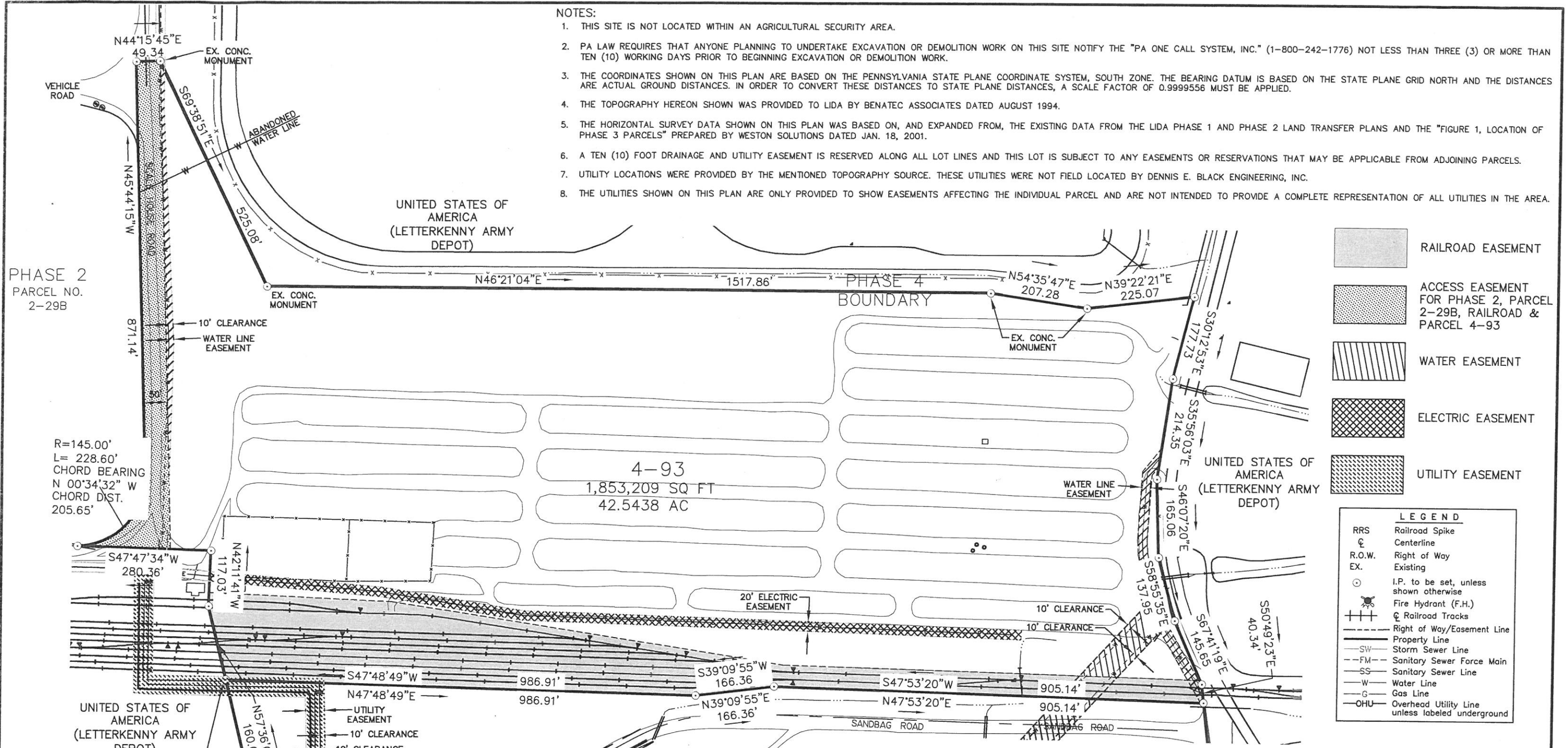


NOTES:

1. THIS SITE IS NOT LOCATED WITHIN AN AGRICULTURAL SECURITY AREA.
2. PA LAW REQUIRES THAT ANYONE PLANNING TO UNDERTAKE EXCAVATION OR DEMOLITION WORK ON THIS SITE NOTIFY THE "PA ONE CALL SYSTEM, INC." (1-800-242-1776) NOT LESS THAN THREE (3) OR MORE THAN TEN (10) WORKING DAYS PRIOR TO BEGINNING EXCAVATION OR DEMOLITION WORK.
3. THE COORDINATES SHOWN ON THIS PLAN ARE BASED ON THE PENNSYLVANIA STATE PLANE COORDINATE SYSTEM, SOUTH ZONE. THE BEARING DATUM IS BASED ON THE STATE PLANE GRID NORTH AND THE DISTANCES ARE ACTUAL GROUND DISTANCES. IN ORDER TO CONVERT THESE DISTANCES TO STATE PLANE DISTANCES, A SCALE FACTOR OF 0.9999556 MUST BE APPLIED.
4. THE TOPOGRAPHY HEREON SHOWN WAS PROVIDED TO LIDA BY BENATEC ASSOCIATES DATED AUGUST 1994.
5. THE HORIZONTAL SURVEY DATA SHOWN ON THIS PLAN WAS BASED ON, AND EXPANDED FROM, THE EXISTING DATA FROM THE LIDA PHASE 1 AND PHASE 2 LAND TRANSFER PLANS AND THE "FIGURE 1, LOCATION OF PHASE 3 PARCELS" PREPARED BY WESTON SOLUTIONS DATED JAN. 18, 2001.
6. A TEN (10) FOOT DRAINAGE AND UTILITY EASEMENT IS RESERVED ALONG ALL LOT LINES AND THIS LOT IS SUBJECT TO ANY EASEMENTS OR RESERVATIONS THAT MAY BE APPLICABLE FROM ADJOINING PARCELS.
7. UTILITY LOCATIONS WERE PROVIDED BY THE MENTIONED TOPOGRAPHY SOURCE. THESE UTILITIES WERE NOT FIELD LOCATED BY DENNIS E. BLACK ENGINEERING, INC.
8. THE UTILITIES SHOWN ON THIS PLAN ARE ONLY PROVIDED TO SHOW EASEMENTS AFFECTING THE INDIVIDUAL PARCEL AND ARE NOT INTENDED TO PROVIDE A COMPLETE REPRESENTATION OF ALL UTILITIES IN THE AREA.



**LETTERKENNY INDUSTRIAL DEVELOPMENT AUTHORITY
PHASE 4 LAND TRANSFER PLAN**
SITUATED IN GREENE TOWNSHIP, FRANKLIN COUNTY, PA

REVISED 4/28/11 PARCEL NUMBER

COMMONWEALTH OF PENNSYLVANIA
REGISTERED SURVEYOR
STEVEN P. WOLFE
No. 24472-E

DENNIS E. BLACK ENGINEERING, INCORPORATED
ENGINEERING—SURVEYING—PLANNING
2400 PHILADELPHIA AVENUE
CHAMBERSBURG, PA. 17201

DWN. C.M.A.	CLIENT No. 3366	ORDER No. 5856	SHEET 2 OF 3
CHK. S.W.	DATE 9-26-07	AutoCAD DRAWING REF. NUMBER	DRAWING No. 07-97
APP. <i>SW</i>	SCALE 1"=200'	see margin	

THE ORIGINAL DRAWING AND THE INFORMATION SHOWN THEREON ARE THE PROPERTY OF D. E. BLACK ENG., INC. AND SHALL NOT BE DUPLICATED WITHOUT WRITTEN PERMISSION

PARCEL 4-93

FILE: N:\land Projects\2002\3656_LIDA\Drawings\Phase 4.dwg LAYOUT: 4-93 BY: Chuck Armstrong 08/14/2011 8:48 AM