

# TAYLOR CREEK

511-545 NE 32ND STREET, OAKLAND PARK, FL 33334

## PROPERTY SUMMARY

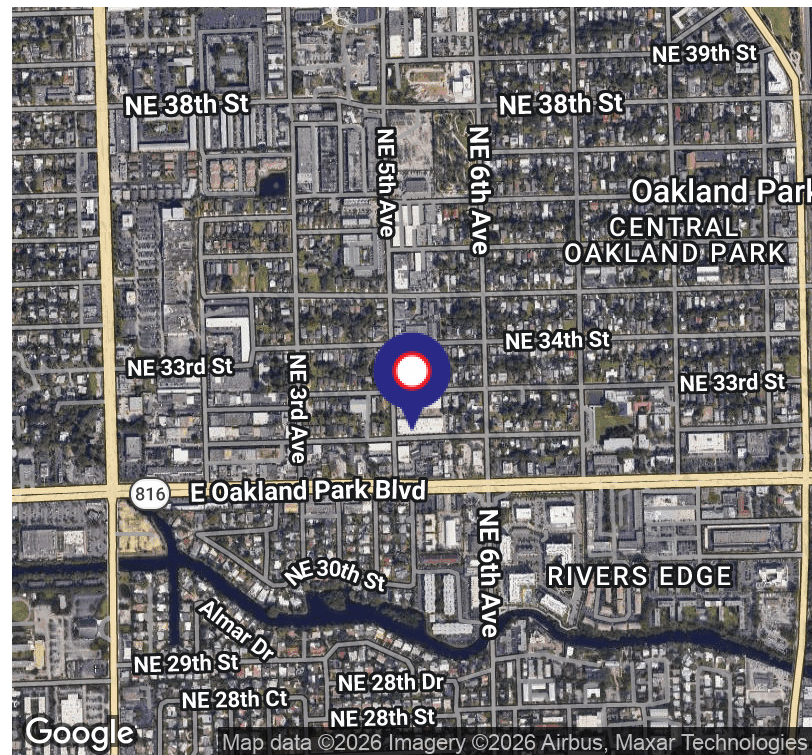


## PROPERTY DESCRIPTION

Taylor Creek is a 64,453 square foot small bay industrial warehouse complex built in 1961. It is located about two miles east of the I-95 highway and one block north of NE 5th Avenue. The unit sizes range from 1,200 square feet up to 6,100 square feet and all of the warehouses have 10' x 10' front and rear grade level overhead doors. The property has 11 foot tall ceilings, small office buildouts, 3 phase electrical service, and LED lighting, making this property an ideal fit for industrial businesses. Taylor Creek is zoned I-1 for Light Industrial.

## PROPERTY HIGHLIGHTS

- 3 Phase power
- Front and rear grade level overhead doors
- Small offices
- 11' Clear ceiling height
- All units have concrete construction
- Close to I-95



### ANGIE WEAVER

Lauderdale Lakes and Lauderhill Manager  
Direct: 954.485.9200 | Cell: 917.645.2339  
angie@levyrai.com

### HALEY PRESSER

Property Manager / Sales Associate  
Direct: 954.485.9200 | Cell: 954.254.5396  
Haley@levyrai.com

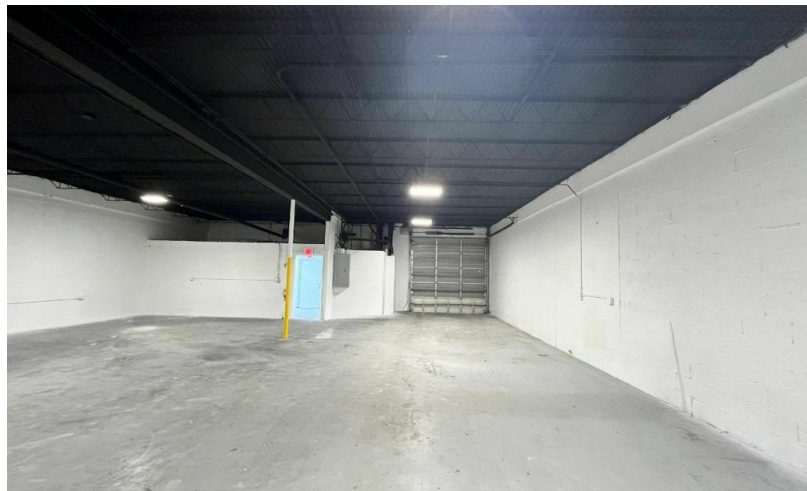
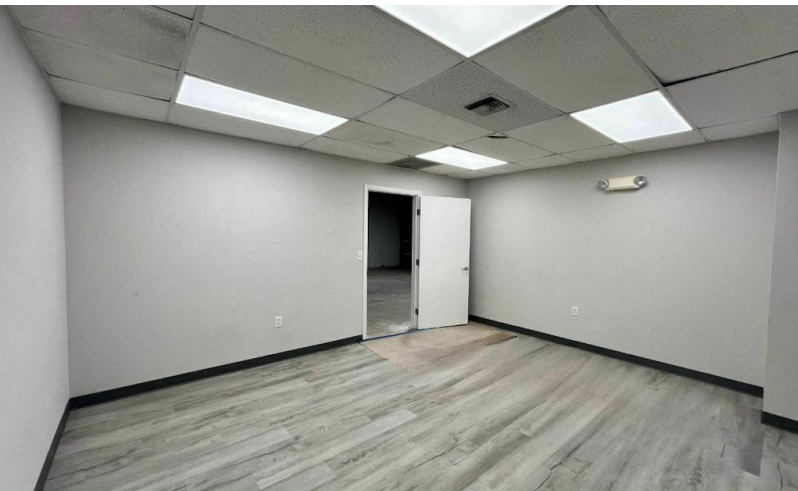


FOR LEASE

# TAYLOR CREEK

511-545 NE 32ND STREET, OAKLAND PARK, FL 33334

## ADDITIONAL PHOTOS



### ANGIE WEAVER

Lauderdale Lakes and Lauderdale Manager  
Direct: 954.485.9200 | Cell: 917.645.2339  
angie@levyrai.com

### HALEY PRESSER

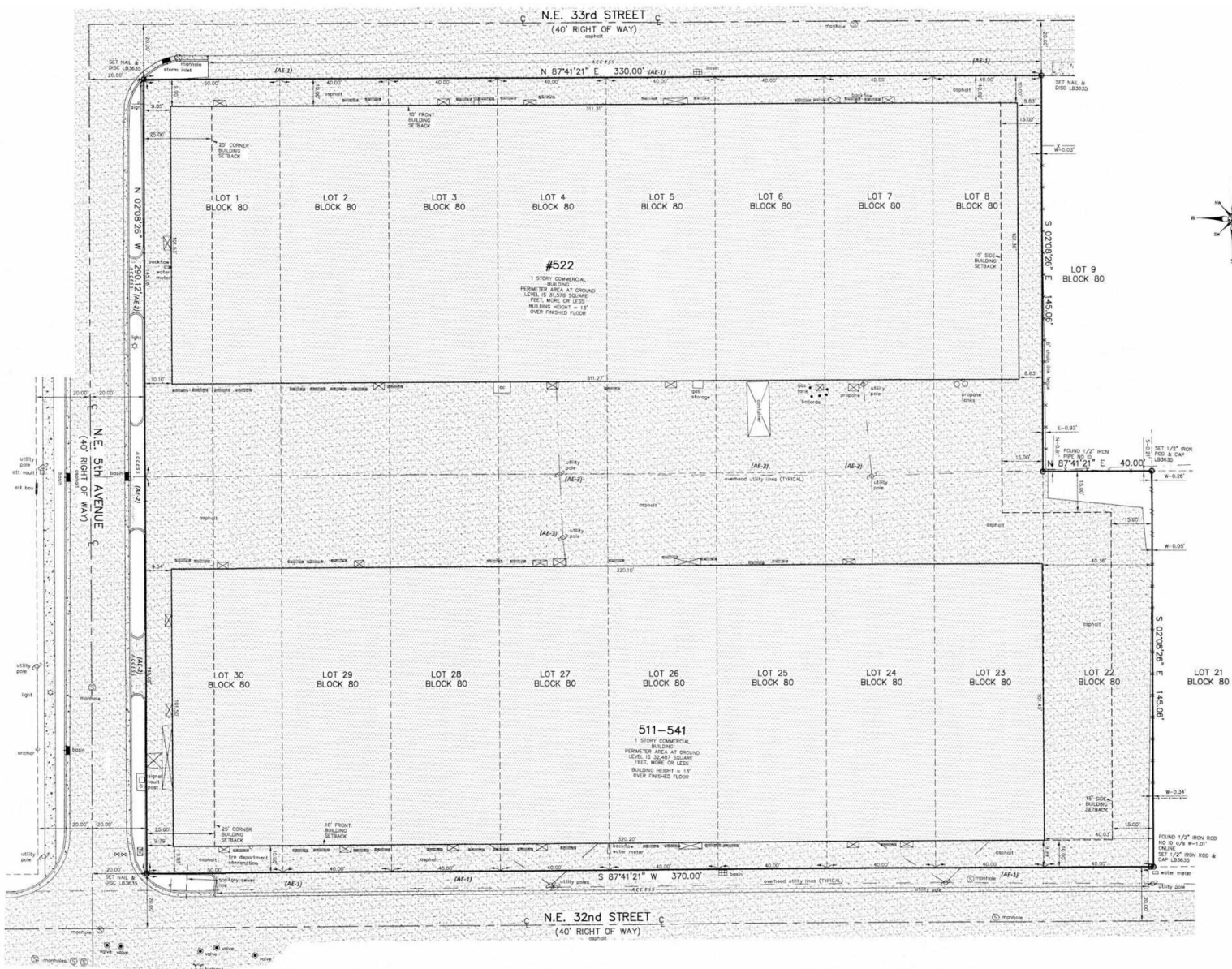
Property Manager / Sales Associate  
Direct: 954.485.9200 | Cell: 954.254.5396  
Haley@levyrai.com



# TAYLOR CREEK

511-545 NE 32ND STREET, OAKLAND PARK, FL 33334

## SITE PLAN



### ANGIE WEAVER

Lauderdale Lakes and Lauderdale Manager  
Direct: 954.485.9200 | Cell: 917.645.2339  
angie@levyrai.com

### HALEY PRESSER

Property Manager / Sales Associate  
Direct: 954.485.9200 | Cell: 954.254.5396  
Haley@levyrai.com

