



BOURBON LOGISTICS CENTER 5

466 Clermont Road, Shepherdsville, Kentucky



LEASING AGENT

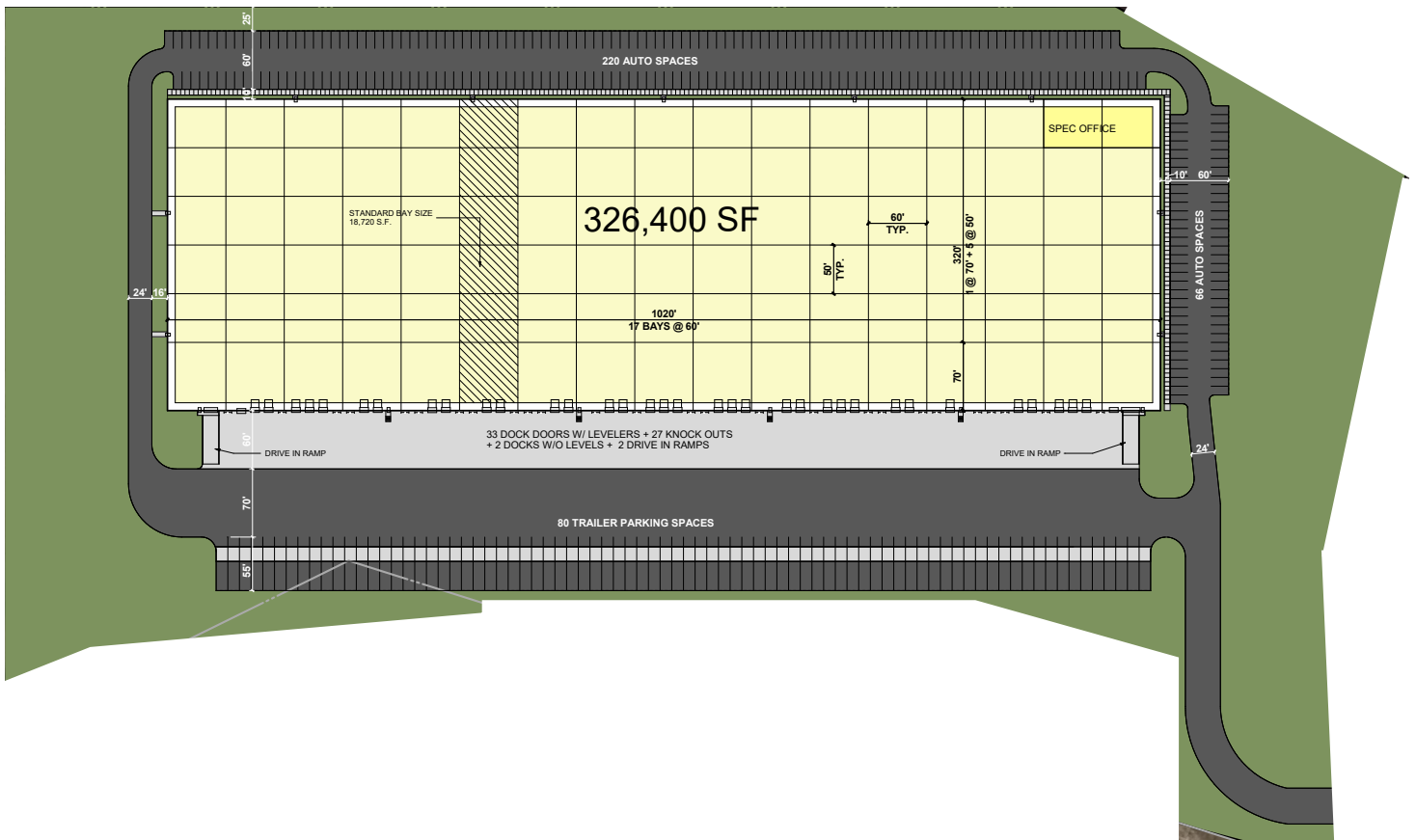


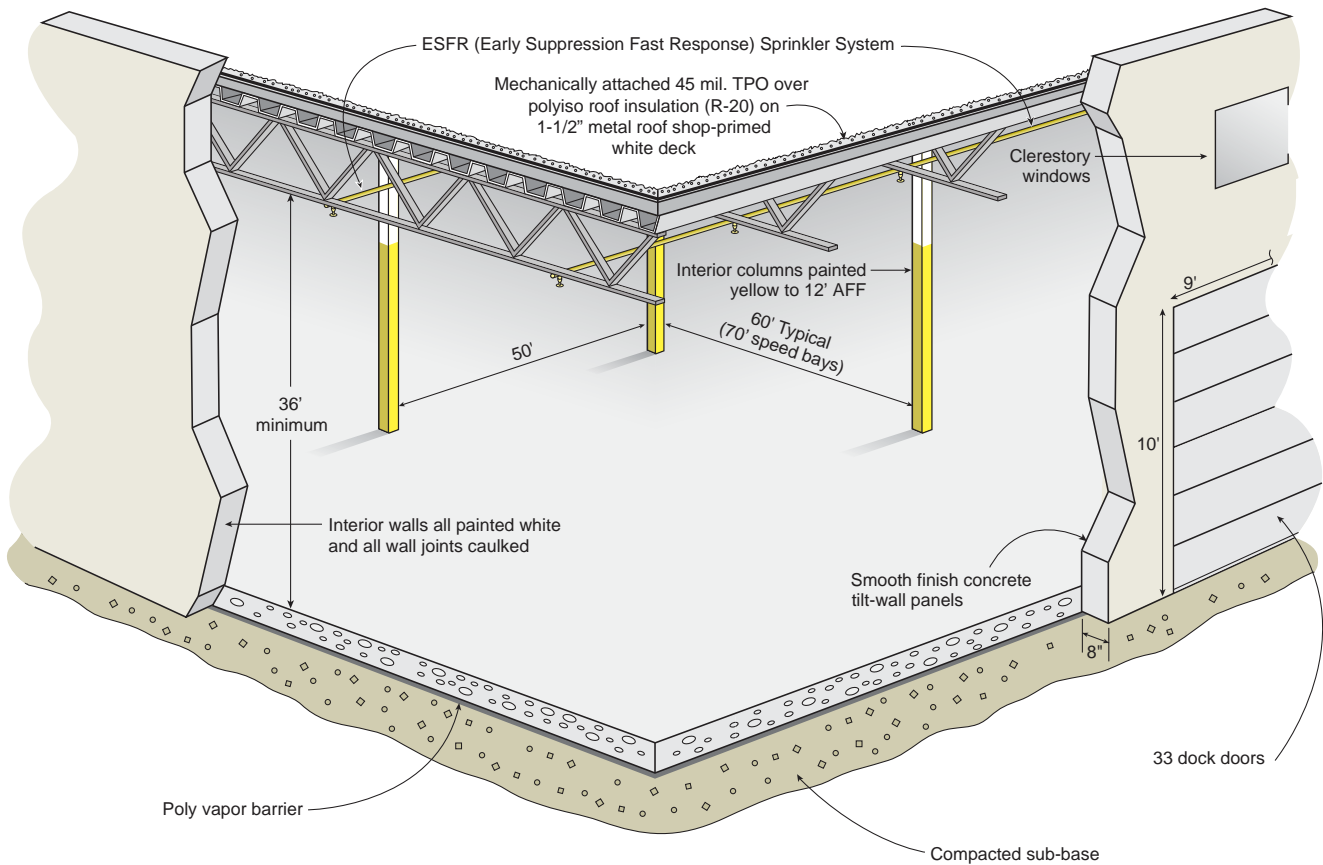
DEVELOPER

BOURBON LOGISTICS CENTER 5

Shepherdsville, Kentucky

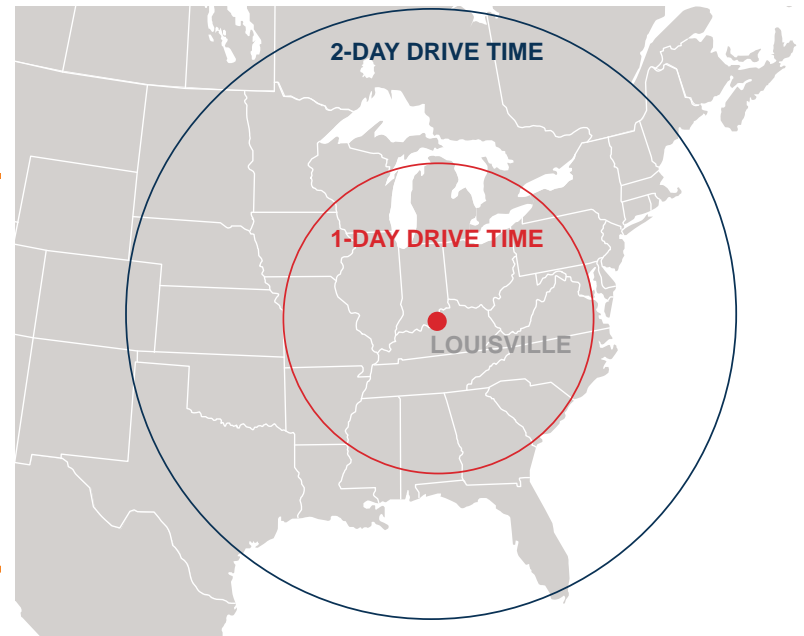
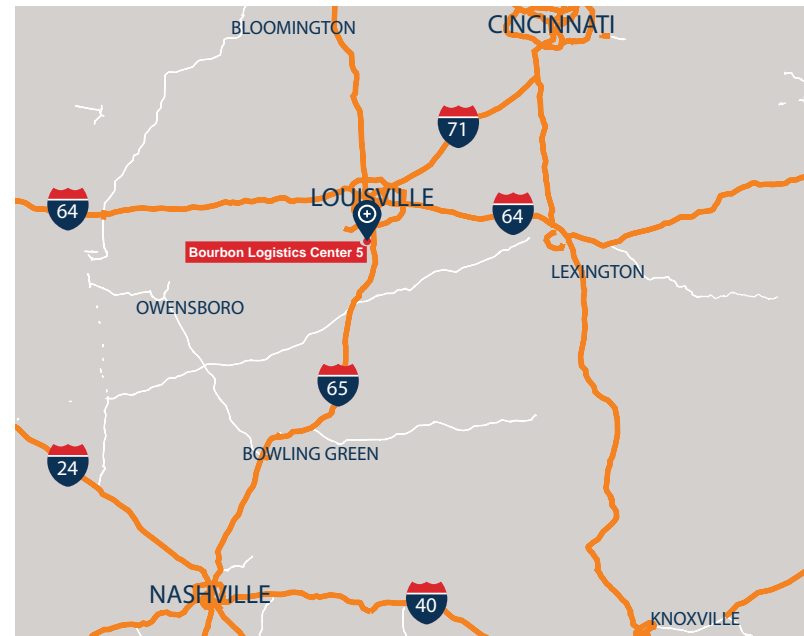
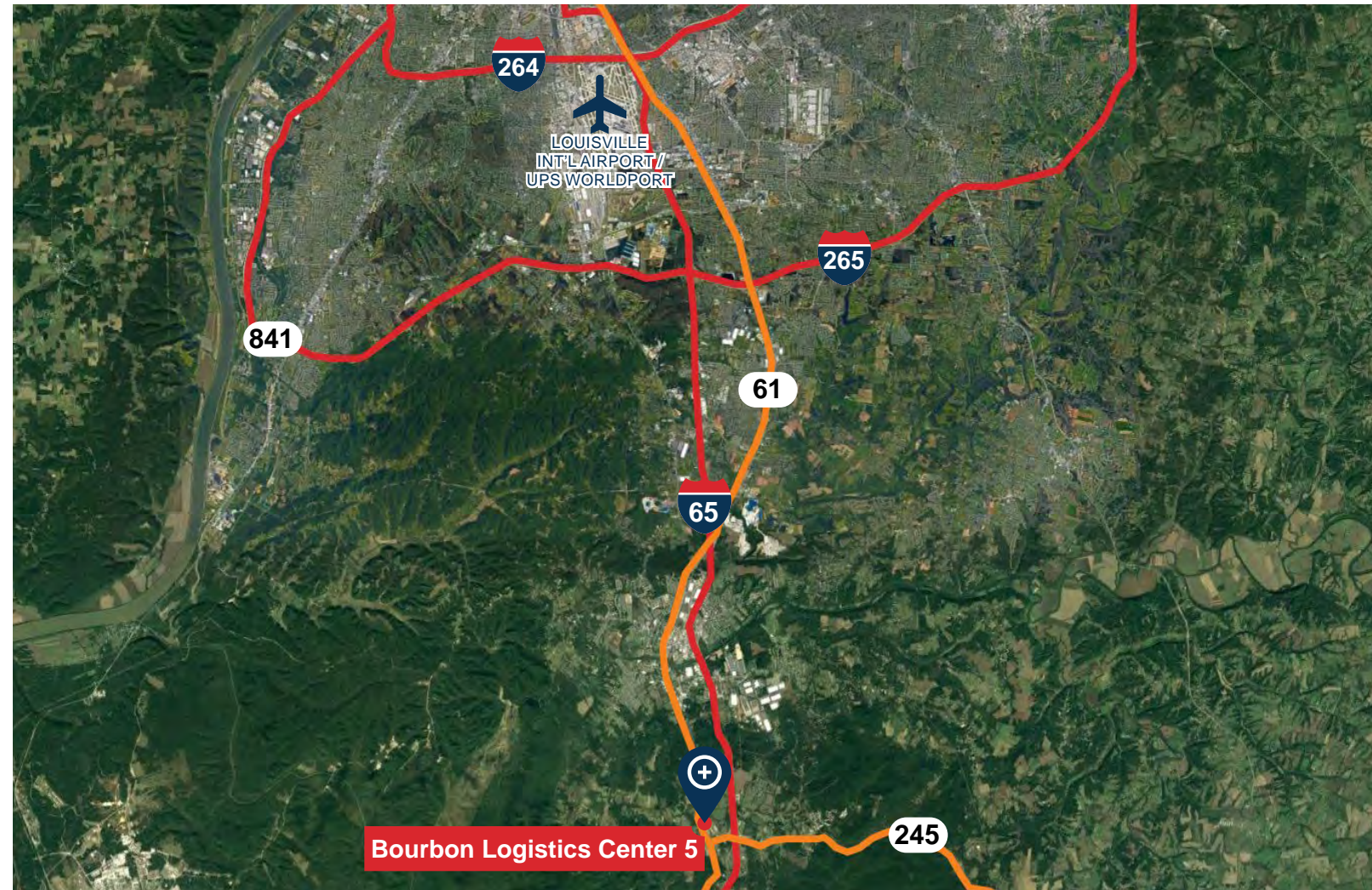
Bourbon Logistics Center 5 is positioned less than one mile from I-65 at KY-245 in Shepherdsville, Kentucky. The location provides superior access to multiple markets. UPS Worldport is 17 miles from the site, providing strategic logistics opportunities to the end-user.





BUILDING SPECIFICATIONS - BOURBON 5

Square Footage	326,400 SF
Site Area	26.9 acres
Column Spacing	50' wd x 60' dp (typical) with 70' speed bays
Clear Height	36'
Dock Doors	33 (expandable)
Drive-In Doors	2 (expandable)
Truck Court Depth	185'
Auto Parking	286 spaces (expandable)
Trailer Storage	80 (expandable)
Lighting	LED
Sprinkler	ESFR sprinkler system



Doug Armbruster
 Senior Vice President and Managing Director
 O 859.287.3707
 C 513.235.3933
darmbruster@c5ip.com



Powell Spears, SIOR
 Senior Managing Director
 O 502.394.2509
 C 502.419.7391
powell.spears@jll.com

Matt Hartlage, SIOR
 Senior Managing Director
 O 502.394.2517
 C 502.807.5339