



**PREMIER**  
COMMERCIAL  
PROPERTIES



# For Lease

590 Cardigan Road  
Shoreview, MN 55126

## PROPERTY DETAILS

- ◆ Former engineering/tech office space for lease
- ◆ Front office space only
- ◆ 2,678 total square feet
  - reception
  - privates on glass
  - bullpen/open area
  - tech space
- ◆ Back room storage area 477sf (11.5' x 43.5') included w/space
- ◆ Total building size 4,800sf (60' x 80')
- ◆ 10 marked surface stalls (includes 1 handicap stall)



## **PROPERTY DETAILS**

LEASE RATE: \$12.00/SF GROSS PLUS  
80% OF HEAT & ELECTRIC

## **FOR MORE INFORMATION, CONTACT**

Marty Fisher  
763.862.2005

[mfisher@premiercommercialproperties.com](mailto:mfisher@premiercommercialproperties.com)



**PREMIER**  
COMMERCIAL  
PROPERTIES

# For Lease

590 Cardigan Road | Shoreview, Minnesota 55126

FOR MORE INFORMATION, CONTACT

Marty Fisher | 763.862.2005 | [mfisher@premiercommercialproperties.com](mailto:mfisher@premiercommercialproperties.com)



**Reception**



**Private offices**



**Open/bullpen area**



**Additional open area**



**Tech area**



**Storage area**

**Spaces will be carpeted**



**PREMIER**  
COMMERCIAL  
PROPERTIES

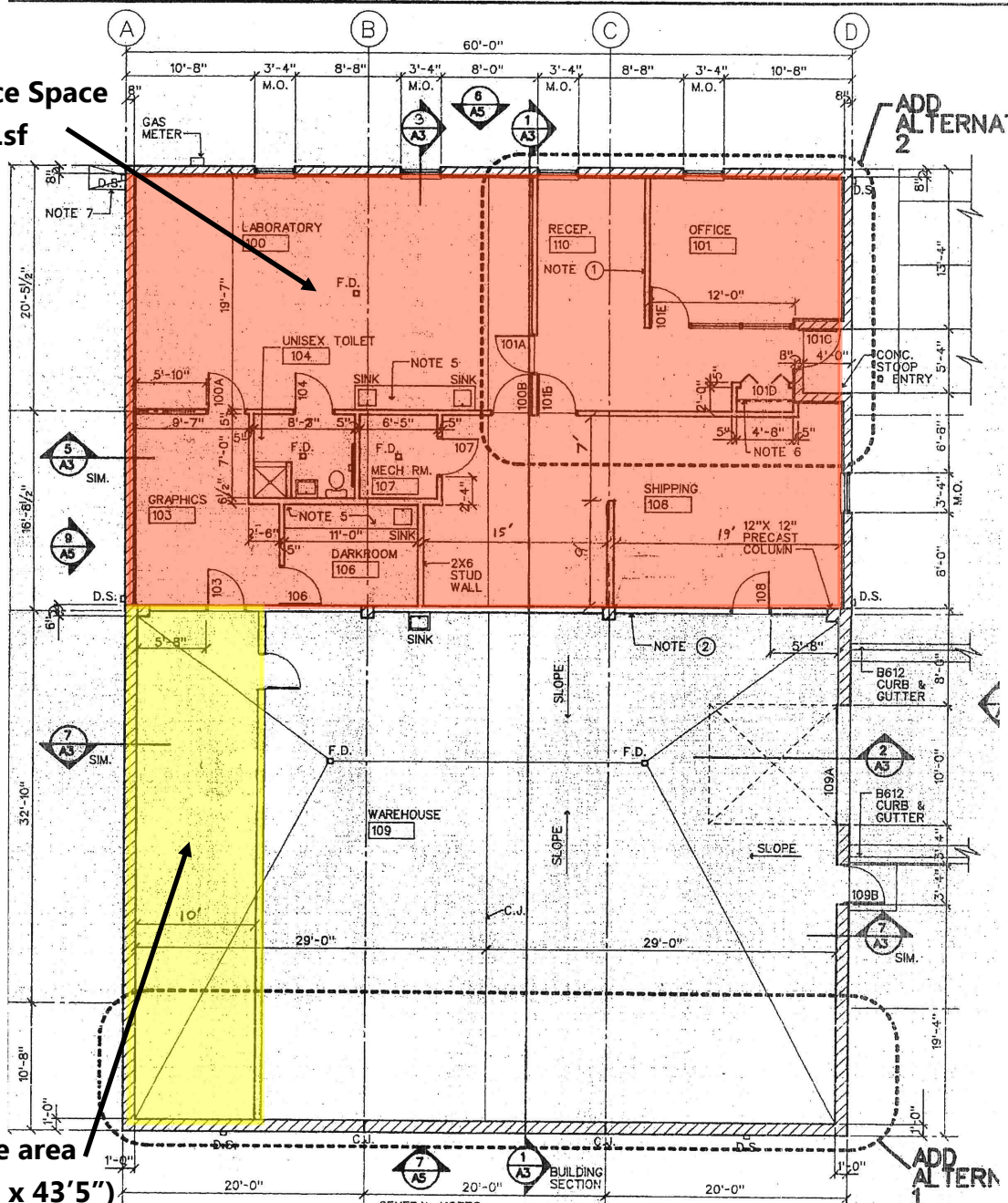
# For Lease

590 Cardigan Road | Shoreview, Minnesota 55126

FOR MORE INFORMATION, CONTACT

Marty Fisher | 763.862.2005 | mfisher@premiercommercialproperties.com

Front Office Space  
2,201sf



Back storage area  
477sf (11'5" x 43'5")

1 FLOOR PLAN

GENERAL NOTES:  
1. CARPENTRY CR. - TYPICAL WALL CONSTRUCTION IS 2 X 4 WD. STUDS @ 16" O.C. W/MTL. RUNN TRACK @ SILL AND HEAD, 3/4" GYP. BD. EACH SIDE. SEE 3/A3 FOR CLOSURE TRIM @ CEILING.  
2. SEPARATION WALL - TWO LAYERS OF 5/8" GYP. BD. EACH SIDE OF 3/8" MTL. STUDS.  
@ 16" O.C. F. & I. BY CARPENTRY. CD. 5/8" W. DATE 11/11/11



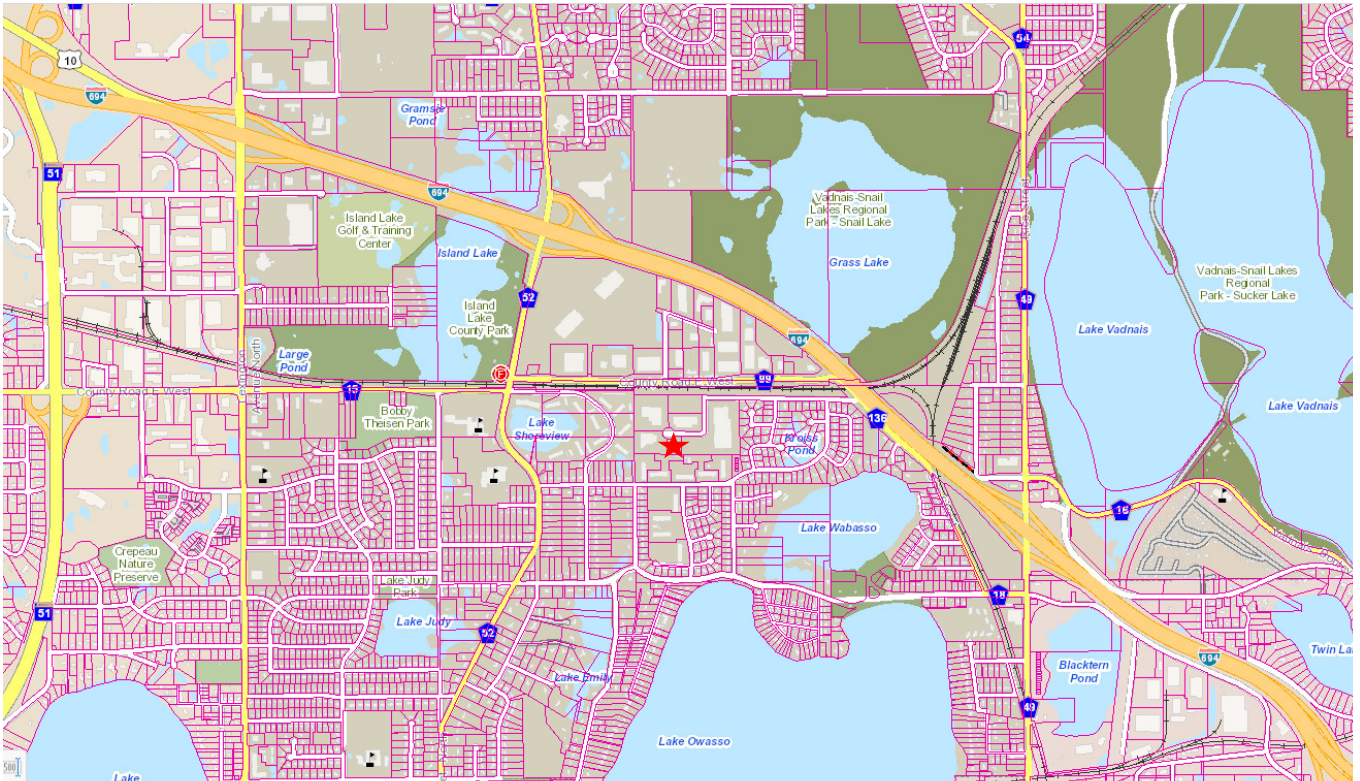
**PREMIER**  
COMMERCIAL  
PROPERTIES

# For Lease

590 Cardigan Road | Shoreview, Minnesota 55126

FOR MORE INFORMATION, CONTACT

Marty Fisher | 763.862.2005 | [mfisher@premiercommercialproperties.com](mailto:mfisher@premiercommercialproperties.com)



6897 139th Lane NW | Ramsey, MN 55303 | [premiercommercialproperties.com](http://premiercommercialproperties.com)