

# 1420 K STREET NW

Washington, DC 20005

## Office For Lease

1,619 - 5,069 SF



Leasing Information:  
202.513.6700

# Lincoln

**Adam Biberaj**  
202.513.6736  
abiberaj@lpc.com

**Merrill Turnbull**  
202.513.6713  
mturnbull@lpc.com

**McKay Elliott**  
202.513.6724  
melliott@lpc.com

**Tim Whitebread**  
202.513.6712  
twhitebread@lpc.com

Lincoln Property Company  
101 Constitution Avenue, NW Suite 325 East  
Washington, DC 20001

[www.lpc.com](http://www.lpc.com)

# 1420 K STREET NW

Washington, DC 20005

Office For Lease

1,619 - 5,069 SF



## Property Highlights

- Mid-block location on prime K Street, one-block from McPherson Square Metro
- Lobby and common area renovations delivering in 2026
- Spec suites delivering in 2026
- Modern lobby directory & on-site security guard
- Window-rich floors with excellent natural light
- High-speed Schindler elevators with upgraded cabs
- Renovated restrooms

## Availabilities

Availabilities	SF	Lease Rate	Date Available
Suite 200	4,860 SF	\$35.00 FS	Immediately
Suite 300	1,772 SF	\$38.00 FS	Immediately
Suite 320	1,828 SF	\$38.00 FS	Immediately
Suite 350	1,619 SF	\$35.00 FS	Immediately
Suite 400	5,069 SF	\$38.00 FS	Immediately
Suite 500	5,069 SF	\$38.00 FS	Immediately
Suite 650	2,854 SF	\$38.00 FS	Immediately
Suite 800	5,069 SF	\$38.00 FS	Immediately
Suite 900	2,561 SF	\$38.00 FS	Immediately
Suite 1000	5,069 SF	\$38.00 FS	Immediately

Adam Biberaj

202.513.6736  
abiberaj@lpc.com

Merrill Turnbull

202.513.6713  
mturnbull@lpc.com

McKay Elliott

202.513.6724  
melliott@lpc.com

Tim Whitebread

202.513.6712  
twhitebread@lpc.com

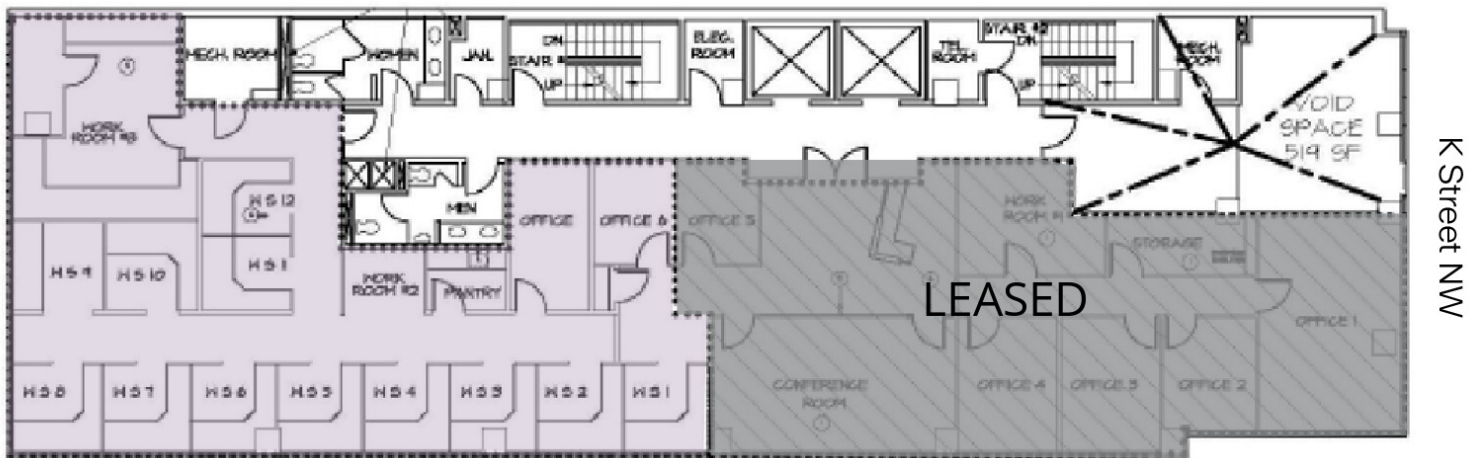
Lincoln

# 1420 K STREET NW

Washington, DC 20005

2nd Floor

4,860 SF



Suite 200

Suite	Size	Lease Rate	Description
■ Suite 200	4,860 SF	\$35.00 FS	Available immediately

**Adam Biberaj**  
202.513.6736  
abiberaj@lpc.com

**Merrill Turnbull**  
202.513.6713  
mturnbull@lpc.com

**McKay Elliott**  
202.513.6724  
melliott@lpc.com

**Tim Whitebread**  
202.513.6712  
twhitebread@lpc.com

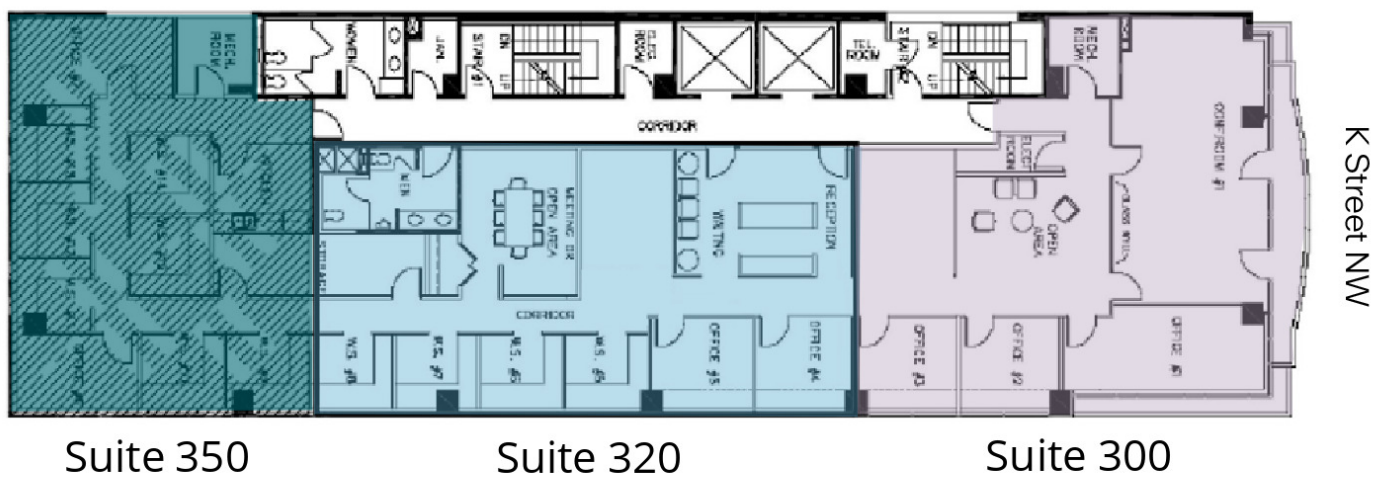
**Lincoln**

# 1420 K STREET NW

Washington, DC 20005

3rd Floor

1,772 SF



Suite	Size	Lease Rate	Description
■ Suite 300	1,772 SF	\$38.00 FS	Front-of-building space available immediately with balcony overlooking K Street
■ Suite 320	1,828 SF	\$38.00 FS	Available immediately
■ Suite 350	1,619 SF	\$35.00 FS	Available immediately

**Adam Biberaj**   **Merrill Turnbull**   **McKay Elliott**   **Tim Whitebread**  
202.513.6736   202.513.6713   202.513.6724   202.513.6712  
abiberaj@lpc.com   mturnbull@lpc.com   mellott@lpc.com   twhitebread@lpc.com

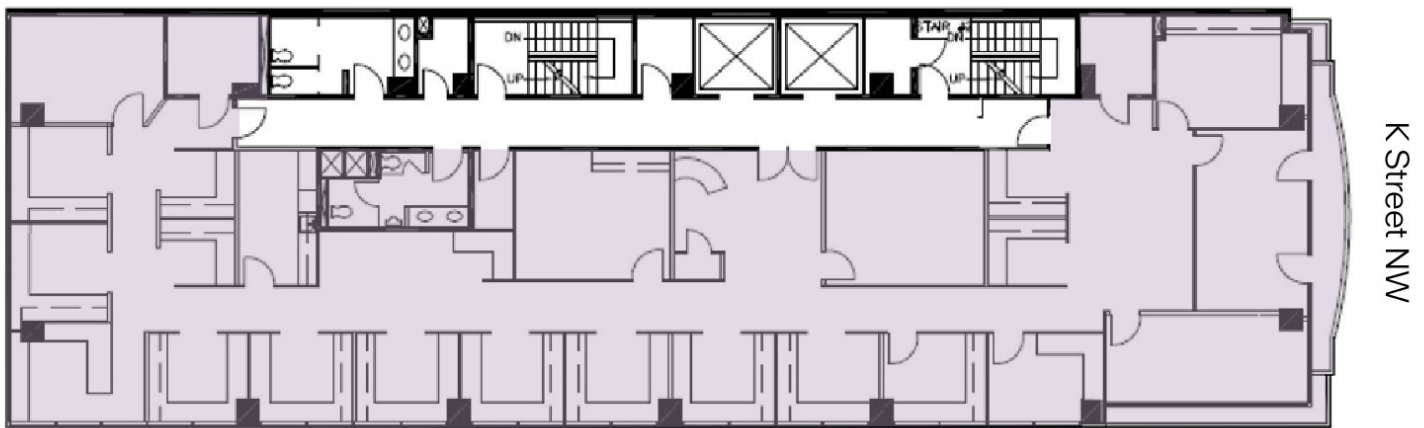
## Lincoln

# 1420 K STREET NW

Washington, DC 20005

4th Floor

5,069 SF



Suite	Size	Lease Rate	Description
■ Suite 400	5,069 SF	\$38.00 FS	Full floor available immediately featuring excellent natural light, private balcony and a mix of open and office intensive space

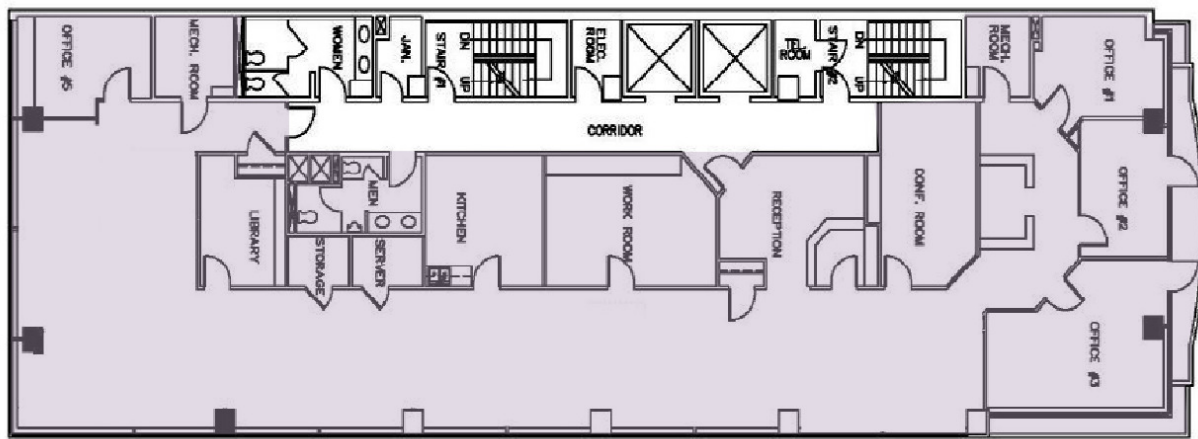
**Adam Biberaj**  
202.513.6736  
abiberaj@lpc.com

**Merrill Turnbull**  
202.513.6713  
mturnbull@lpc.com

**McKay Elliott**  
202.513.6724  
melliott@lpc.com

**Tim Whitebread**  
202.513.6712  
twhitebread@lpc.com

**Lincoln**



K Street NW

Suite	Size	Lease Rate	Description
■ Suite 500	5,069 SF	\$38.00 FS	Full floor available immediately featuring front office, open plan space and a private balcony overlooking K Street with views of Franklin Square Park

<b>Adam Biberaj</b> 202.513.6736 abiberaj@lpc.com	<b>Merrill Turnbull</b> 202.513.6713 mturnbull@lpc.com	<b>McKay Elliott</b> 202.513.6724 melliott@lpc.com	<b>Tim Whitebread</b> 202.513.6712 twhitebread@lpc.com
---	--	--	--

**Lincoln**

# 1420 K STREET NW

Washington, DC 20005

6th Floor

2,854 SF



Suite	Size	Lease Rate	Description
■ Suite 650	2,854 SF	\$38.00 FS	Space available immediately featuring excellent natural light and views of Franklin Square Park

**Adam Biberaj**   **Merrill Turnbull**   **McKay Elliott**   **Tim Whitebread**  
202.513.6736   202.513.6713   202.513.6724   202.513.6712  
abiberaj@lpc.com   mturnbull@lpc.com   mellott@lpc.com   twhitebread@lpc.com

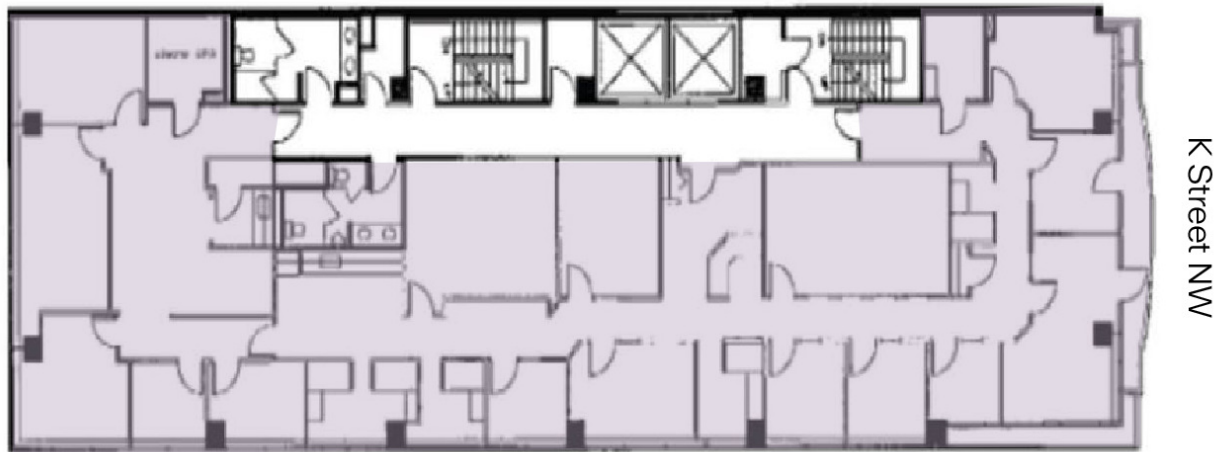
**Lincoln**

# 1420 K STREET NW

Washington, DC 20005

8th Floor

5,069 SF



K Street NW

Suite	Size	Lease Rate	Description
■ Suite 800	5,069 SF	\$38.00 FS	Full floor available immediately

Adam Biberaj  
202.513.6736  
abiberaj@lpc.com

Merrill Turnbull  
202.513.6713  
mturnbull@lpc.com

McKay Elliott  
202.513.6724  
melliott@lpc.com

Tim Whitebread  
202.513.6712  
twhitebread@lpc.com

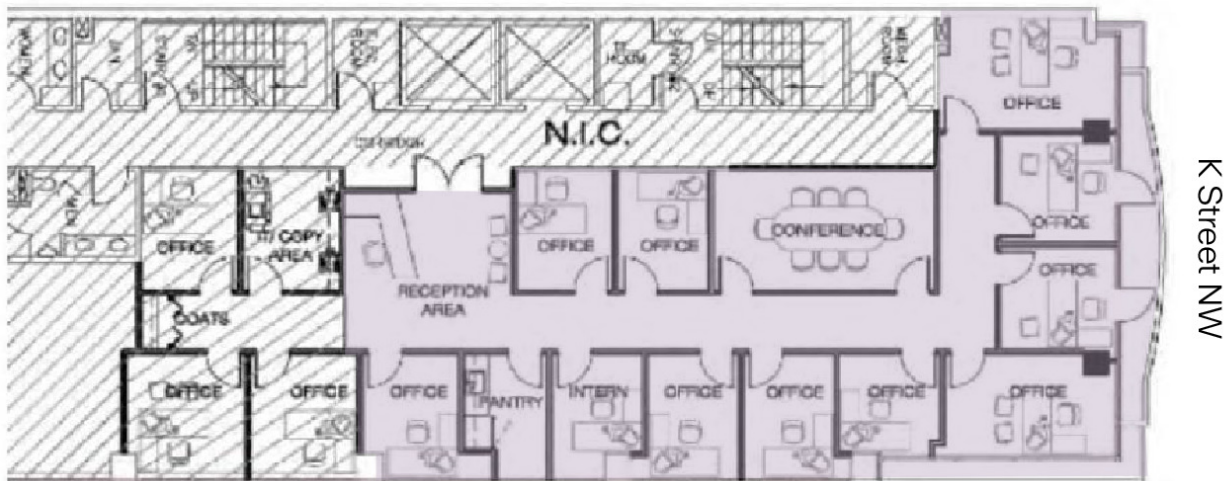
Lincoln

# 1420 K STREET NW

Washington, DC 20005

9th Floor

2,561 SF



Suite 900

Suite	Size	Lease Rate	Description
■ Suite 900	2,561 SF	\$38.00 FS	Full floor available immediately

Adam Biberaj    Merrill Turnbull    McKay Elliott    Tim Whitebread  
202.513.6736    202.513.6713    202.513.6724    202.513.6712  
abiberaj@lpc.com    mturnbull@lpc.com    mellott@lpc.com    twhitebread@lpc.com

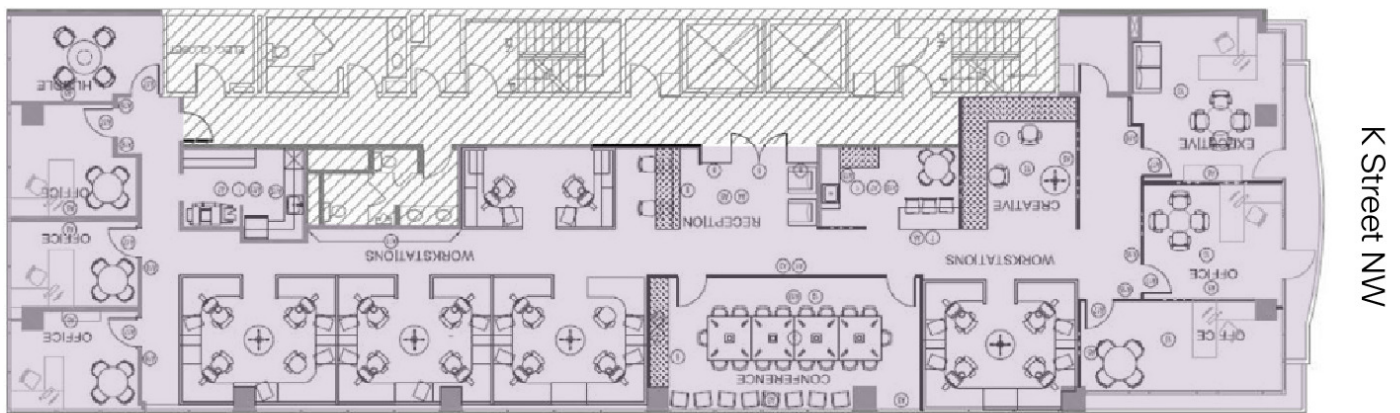
## Lincoln

# 1420 K STREET NW

Washington, DC 20005

10th Floor

5,069 SF



Suite	Size	Lease Rate	Description
■ Suite 1000	5,069 SF	\$38.00 FS	Full floor available immediately

**Adam Biberaj**  
202.513.6736  
abiberaj@lpc.com

**Merrill Turnbull**  
202.513.6713  
mturnbull@lpc.com

**McKay Elliott**  
202.513.6724  
melliott@lpc.com

**Tim Whitebread**  
202.513.6712  
twhitebread@lpc.com

**Lincoln**

# 1420 K STREET NW

Washington, DC 20005

## Nearby Amenities



Adam Biberaj  
202.513.6736  
abiberaj@lpc.com

Merrill Turnbull  
202.513.6713  
mturnbull@lpc.com

McKay Elliott  
202.513.6724  
melliott@lpc.com

Tim Whitebread  
202.513.6712  
twhitebread@lpc.com

# Lincoln



# 1420 K STREET NW

Washington, DC 20005

Leasing Information:  
202.513.6700

**Adam Biberaj**  
202.513.6736  
abiberaj@lpc.com

**Merrill Turnbull**  
202.513.6713  
mturnbull@lpc.com

**McKay Elliott**  
202.513.6724  
melliott@lpc.com

**Tim Whitebread**  
202.513.6712  
twhitebread@lpc.com

## Lincoln

Lincoln Property Company  
101 Constitution Avenue, NW Suite 325 East  
Washington, DC 20001

[www.lpc.com](http://www.lpc.com)