



# FOR LEASE - CLASS "A" OFFICE SPACE

5950 Hazeltine National Dr, Orlando, FL 32822

# CITADEL INTERNATIONAL

## PROPERTY HIGHLIGHTS

- Class "A", 6-story, 139,042± rsf office building
- Beautiful three-story atrium and lobby
- EV charging stations available
- Located in Lee Vista Center
- Close proximity to hotels and restaurants
- Convenient access to SR 436 (Semoran Blvd), SR 528, SR 417 and Orlando International Airport



### ASKING RATE:

Call for pricing



### AVAILABILITY:

- Suite 210:** 2,670± rsf
  - Suite 220:** 2,583± rsf
  - Suite 255:** 3,484± rsf
  - Suite 305:** 2,324± rsf
  - Suite 320:** 2,566± rsf
  - Suite 400:** 25,488± rsf
  - Suite 500:** 16,610± rsf
- Available 1/1/2027



### PARKING:

4.0/1000 SF



### YEAR BUILT

1989



# HARBERT REALTY SERVICES

**DAMIEN MADSEN**

[dmdasen@harbertrealty.com](mailto:dmdasen@harbertrealty.com) | 407.256.2844

**JOSH SMITH, SIOR**

[jsmith@harbertrealty.com](mailto:jsmith@harbertrealty.com) | 407.739.8602

*For More Information: HarbertRealty.com*  
400 S Park Ave, Suite 225, Winter Park, FL 32789

**FOR LEASE - CLASS "A" OFFICE SPACE**  
5950 Hazeltine National Dr, Orlando, FL 32822

**CITADEL**  
**INTERNATIONAL**



**DAMIEN MADSEN**  
dmadsen@harbertrealty.com | 407.256.2844

**JOSH SMITH, SIOR**  
jsmith@harbertrealty.com | 407.739.8602

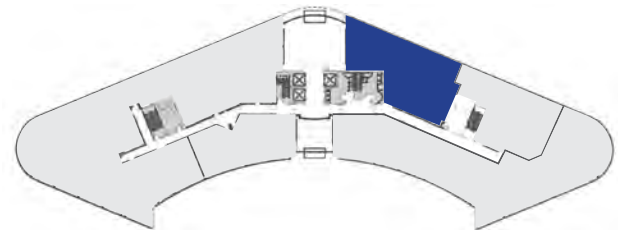
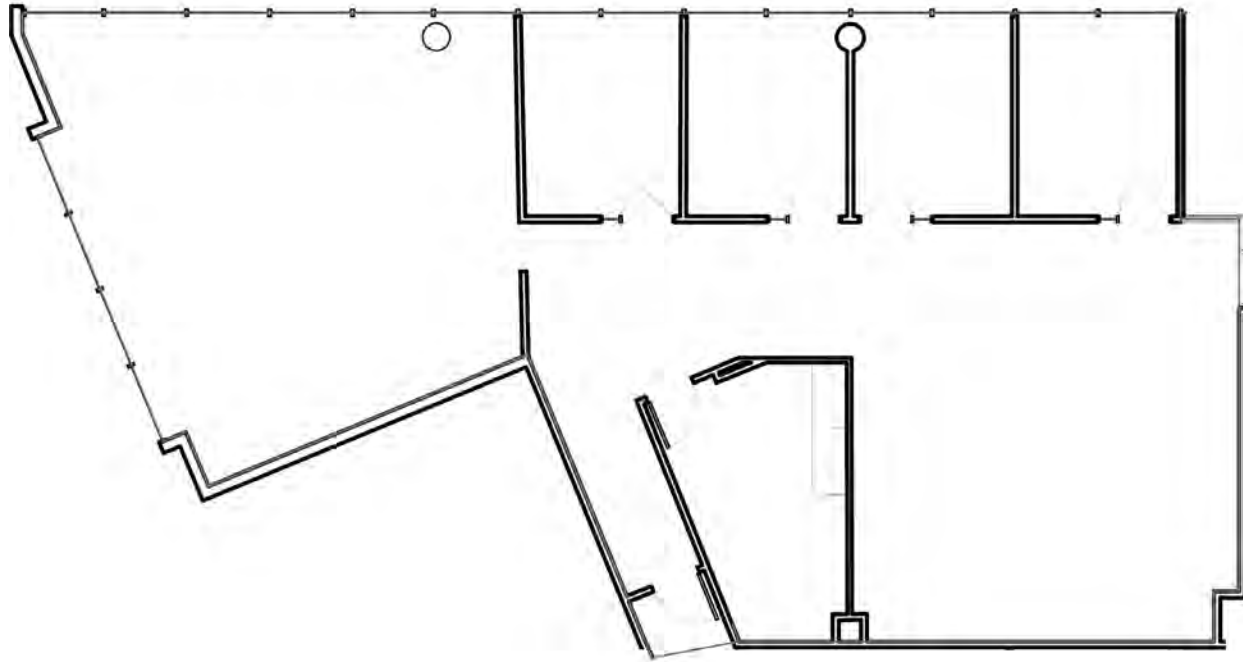
*For More Information: HarbertRealty.com*  
400 S Park Ave, Suite 225, Winter Park, FL 32789

# FOR LEASE - CLASS "A" OFFICE SPACE

5950 Hazeltine National Dr, Orlando, FL 32822

# CITADEL INTERNATIONAL

## SUITE 210: 2,670± rsf



**DAMIEN MADSEN**  
dmadsen@harbertrealty.com | 407.256.2844

**JOSH SMITH, SIOR**  
jsmith@harbertrealty.com | 407.739.8602

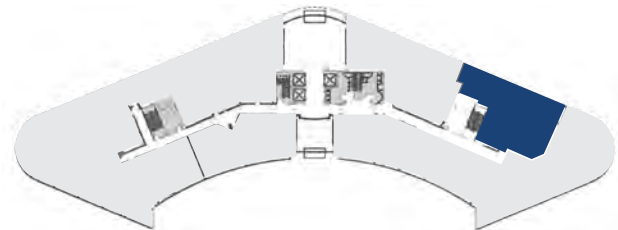
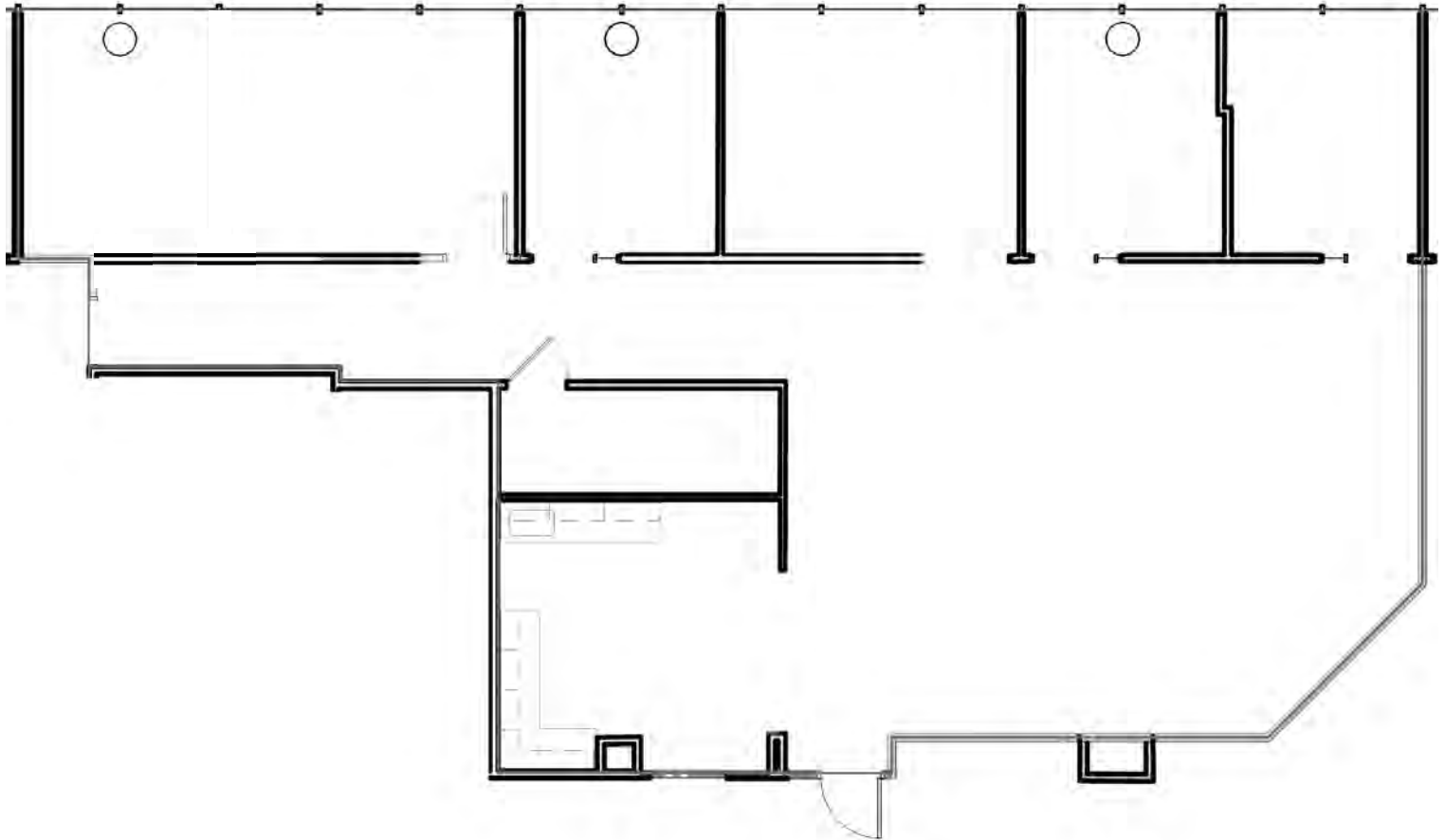
*For More Information: HarbertRealty.com*  
400 S Park Ave, Suite 225, Winter Park, FL 32789

# FOR LEASE - CLASS "A" OFFICE SPACE

5950 Hazeltine National Dr, Orlando, FL 32822

# CITADEL INTERNATIONAL

## SUITE 220: 2,583± rsf



**HARBERT**  
REALTY SERVICES

**DAMIEN MADSEN**

dmadsen@harbertrealty.com | 407.256.2844

**JOSH SMITH, SIOR**

jsmith@harbertrealty.com | 407.739.8602

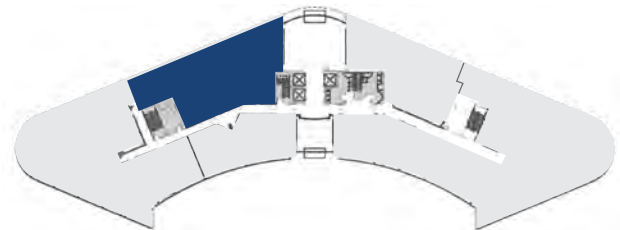
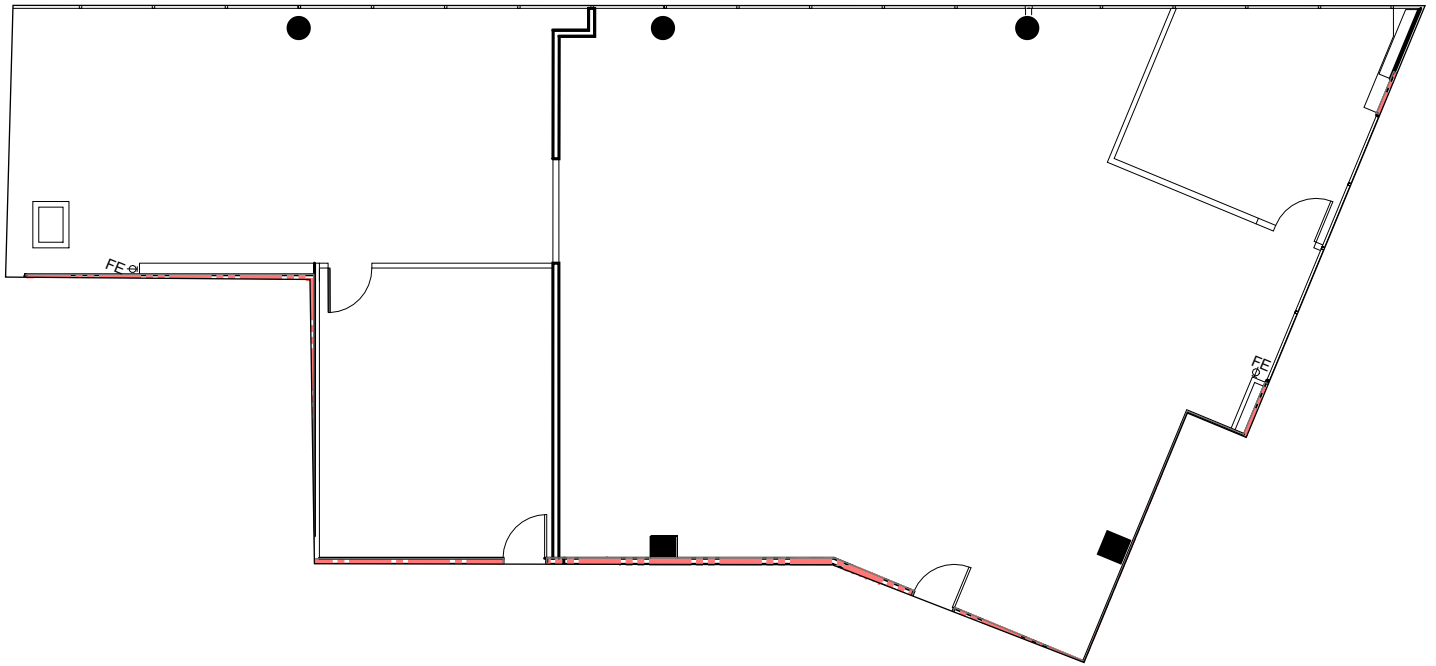
*For More Information: HarbertRealty.com*  
400 S Park Ave, Suite 225, Winter Park, FL 32789

# FOR LEASE - CLASS "A" OFFICE SPACE

5950 Hazeltine National Dr, Orlando, FL 32822

**CITADEL**  
INTERNATIONAL

**SUITE 255: 3,484± rsf**



**DAMIEN MADSEN**  
dmadsen@harbertrealty.com | 407.256.2844

**JOSH SMITH, SIOR**  
jsmith@harbertrealty.com | 407.739.8602

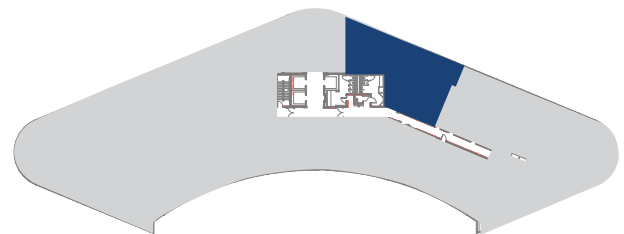
*For More Information: HarbertRealty.com*  
400 S Park Ave, Suite 225, Winter Park, FL 32789

# FOR LEASE - CLASS "A" OFFICE SPACE

5950 Hazeltine National Dr, Orlando, FL 32822

# CITADEL INTERNATIONAL

## SUITE 305: 2,324± rsf



**HARBERT**  
REALTY SERVICES

**DAMIEN MADSEN**

dmadsen@harbertrealty.com | 407.256.2844

**JOSH SMITH, SIOR**

jsmith@harbertrealty.com | 407.739.8602

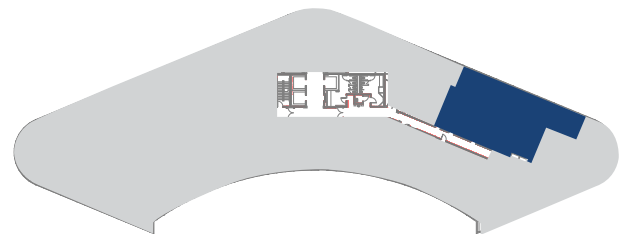
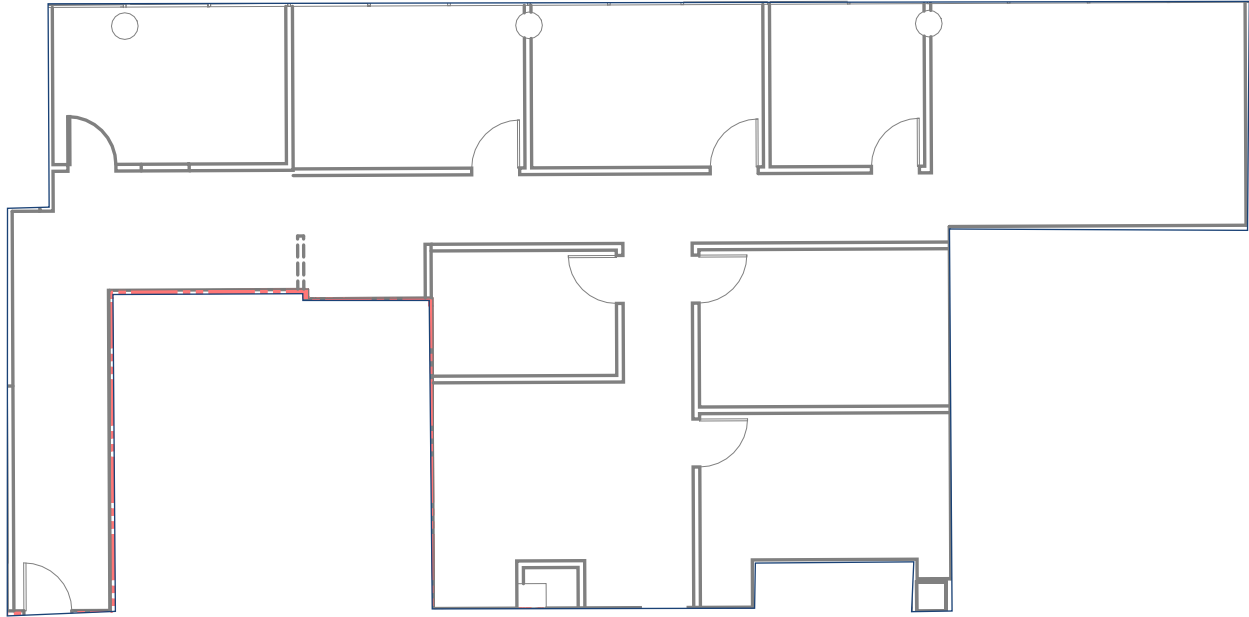
*For More Information: HarbertRealty.com*  
400 S Park Ave, Suite 225, Winter Park, FL 32789

# FOR LEASE - CLASS "A" OFFICE SPACE

5950 Hazeltine National Dr, Orlando, FL 32822

# CITADEL INTERNATIONAL

## SUITE 320: 2,566± rsf



**HARBERT**  
REALTY SERVICES

**DAMIEN MADSEN**

dmadsen@harbertrealty.com | 407.256.2844

**JOSH SMITH, SIOR**

jsmith@harbertrealty.com | 407.739.8602

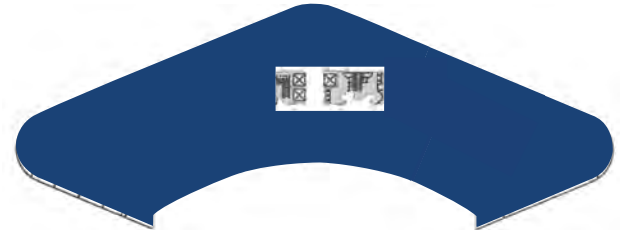
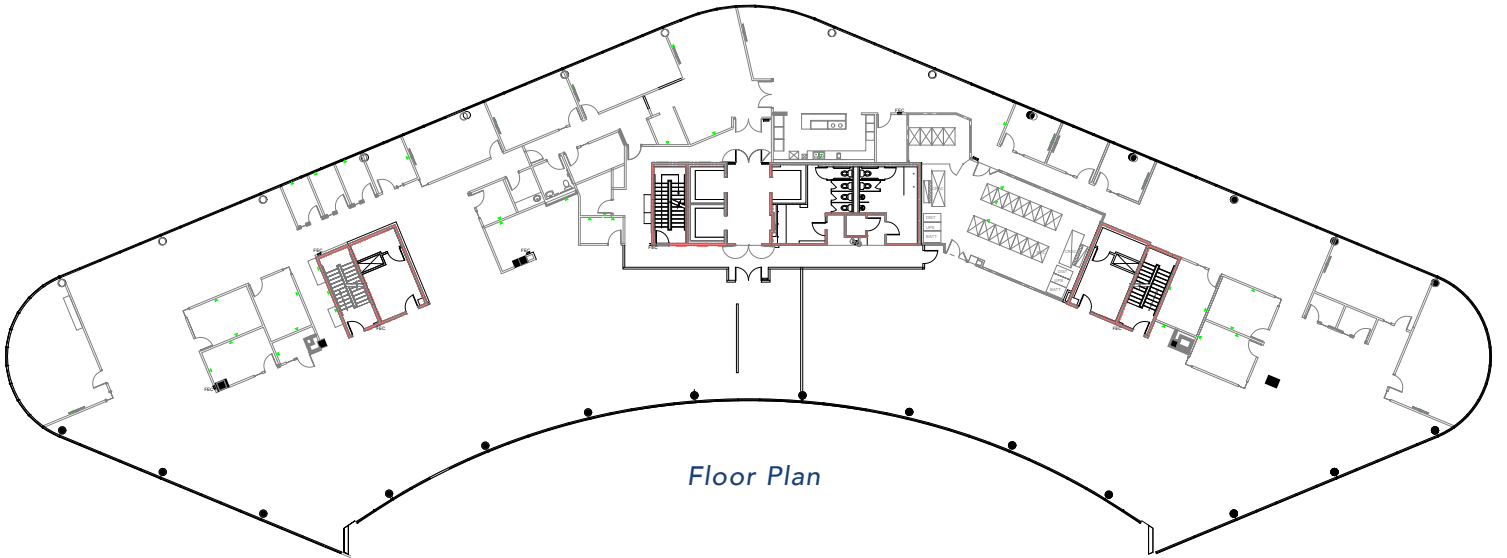
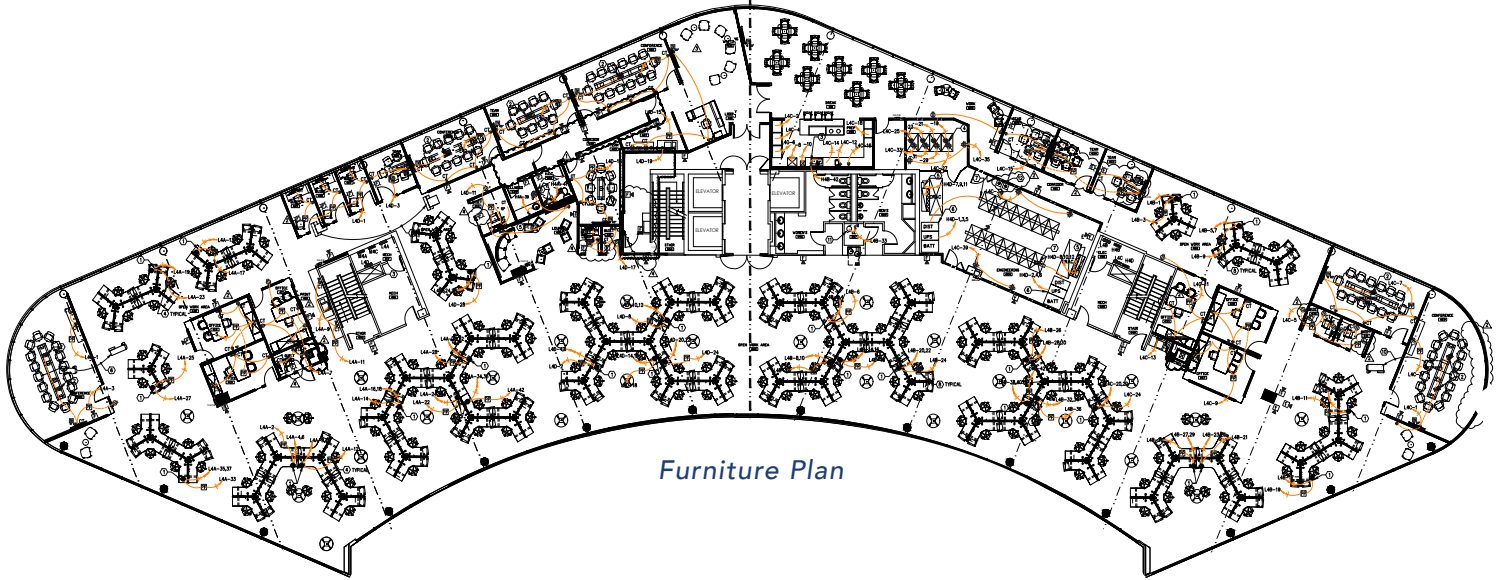
*For More Information: HarbertRealty.com*  
400 S Park Ave, Suite 225, Winter Park, FL 32789

# FOR LEASE - CLASS "A" OFFICE SPACE

5950 Hazeltine National Dr, Orlando, FL 32822

# CITADEL INTERNATIONAL

## SUITE 400 (Entire 4th Floor): 25,488± rsf



**HARBERT**  
REALTY SERVICES

**DAMIEN MADSEN**

dmadsen@harbertrealty.com | 407.256.2844

**JOSH SMITH, SIOR**

jsmith@harbertrealty.com | 407.739.8602

*For More Information: HarbertRealty.com*

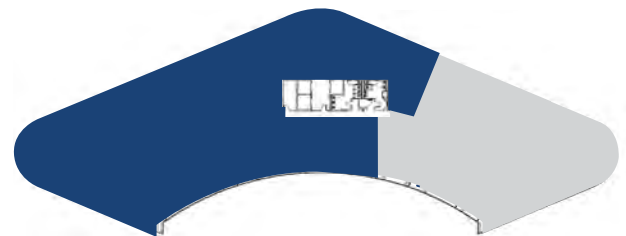
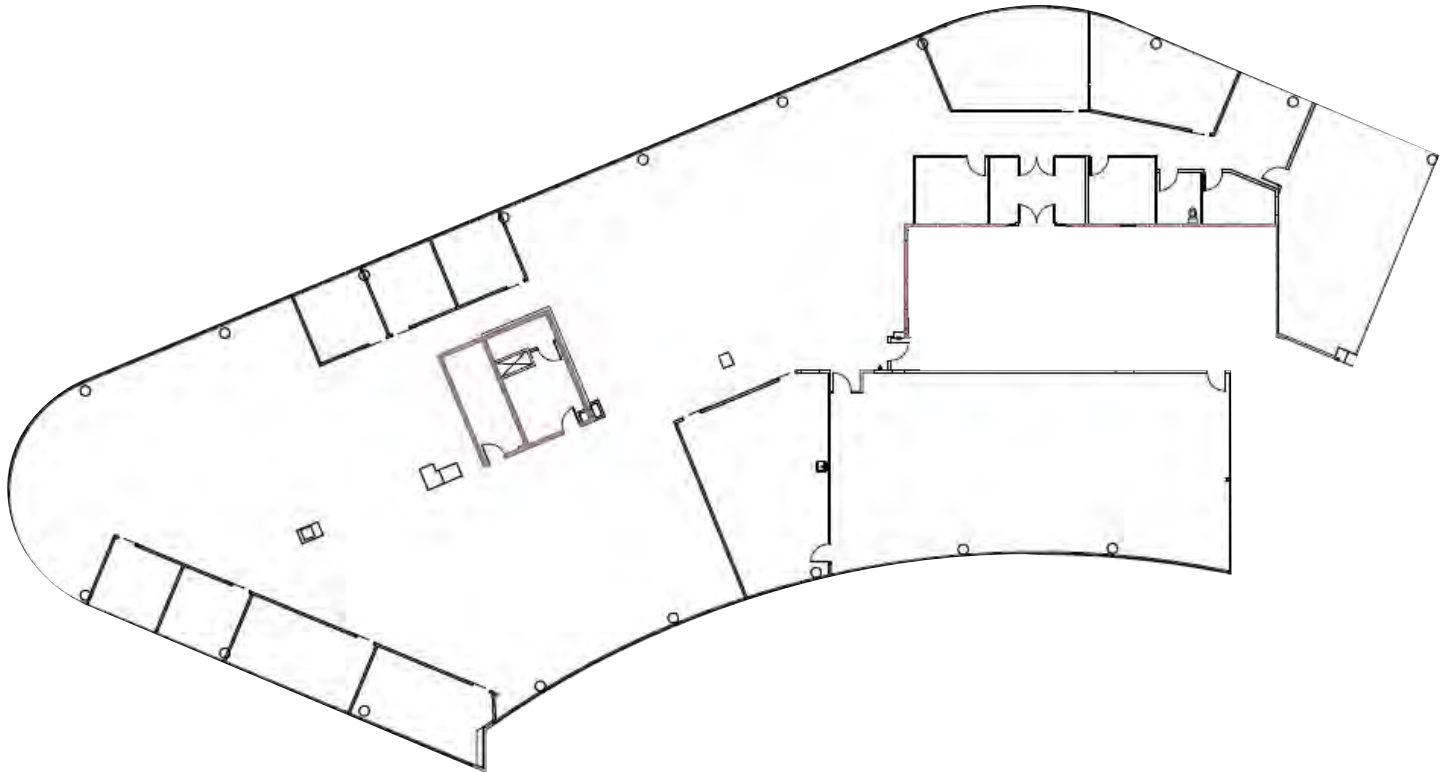
400 S Park Ave, Suite 225, Winter Park, FL 32789

# FOR LEASE - CLASS "A" OFFICE SPACE

5950 Hazeltine National Dr, Orlando, FL 32822

# CITADEL INTERNATIONAL

**SUITE 500: 16,610± rsf**



**HARBERT**  
REALTY SERVICES

**DAMIEN MADSEN**

dmadsen@harbertrealty.com | 407.256.2844

**JOSH SMITH, SIOR**

jsmith@harbertrealty.com | 407.739.8602

*For More Information: HarbertRealty.com*  
400 S Park Ave, Suite 225, Winter Park, FL 32789