

PrestonBend

REAL ESTATE

FOR LEASE

200 E. Evergreen, Suite 242-244, Sherman, Texas



OVERVIEW

- Total Building Size: 23,458 SF
- Available Suite: 1,245 SF
- Lease Rate: \$14.00/SF + NNN
- Zoning: C1-Retail Business District
- Ample Parking
- Easy Access to US Hwy 75

PROPERTY DETAILS

Fantastic office suite available in rapidly growing Sherman! Evergreen Office Plaza is a thriving hub with a strong mix of medical and professional tenants - perfect for healthcare providers and office users seeking a quality setting. The complex features six well-maintained buildings, abundant paved parking, excellent visibility, and unbeatable access to US Hwy 75 and Texoma Parkway. Ready to elevate your business? Call the Broker for details!



prestonbendre.com

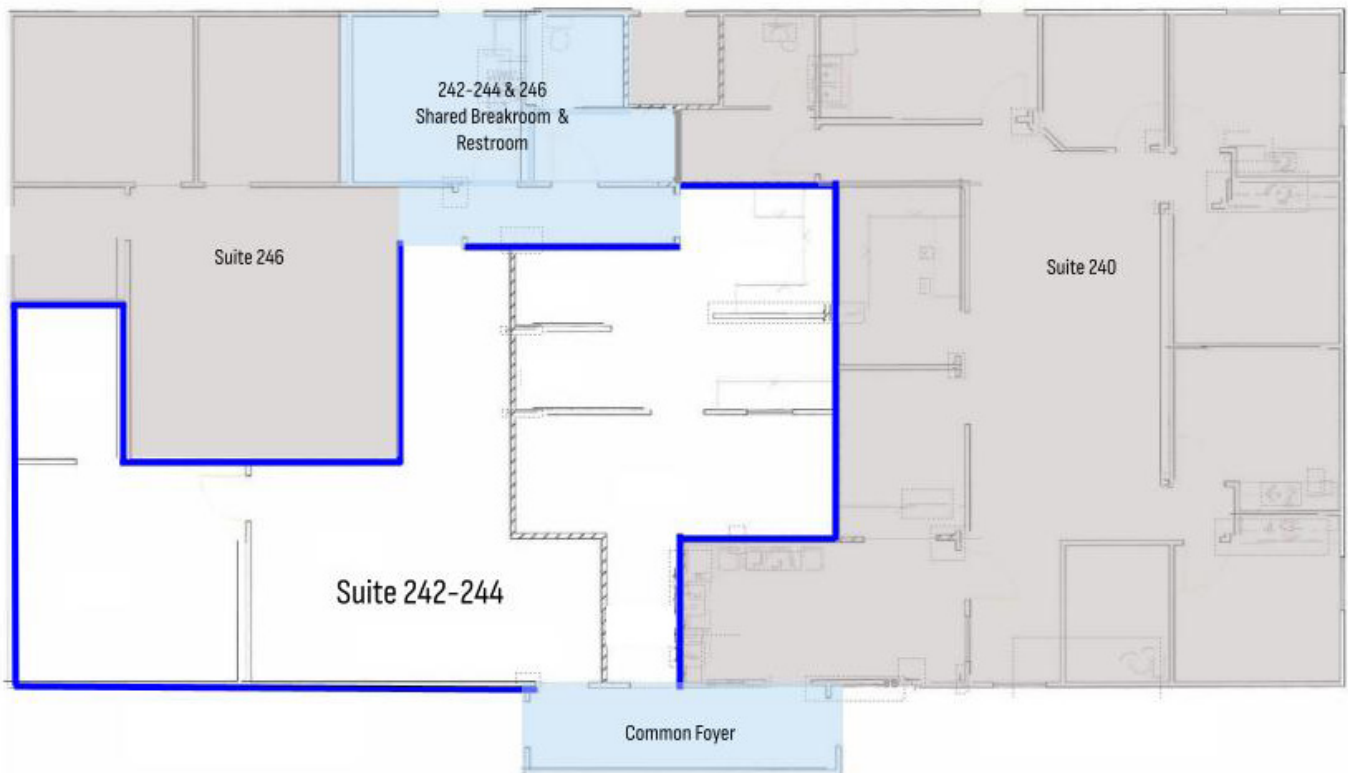
Randy Jay,
Principal Broker
972.413.0375
randy@prestonbendre.com

PrestonBend

REAL ESTATE

PROPERTY DETAILS

200 E. Evergreen, Suite 242-244, Sherman, Texas



prestonbendre.com

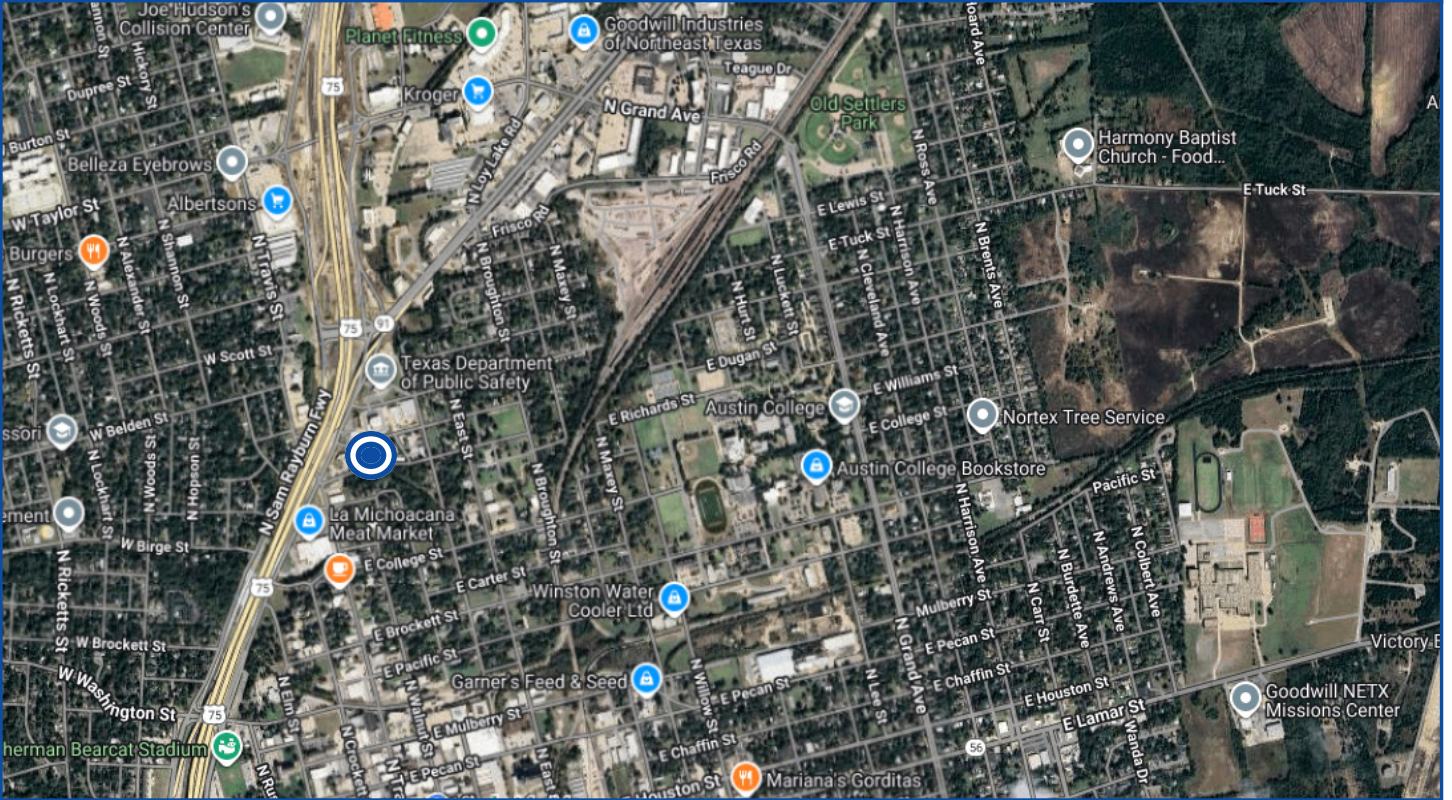
Randy Jay,
Principal Broker
972.413.0375
randy@prestonbendre.com

PrestonBend

REAL ESTATE

SITE AERIAL

200 E. Evergreen, Suite 242-244, Sherman, Texas



THE INFORMATION CONTAINED HEREIN HAS BEEN GIVEN TO US BY THE OWNER OF THE PROPERTY OR OTHER SOURCES WE DEEM RELIABLE. WE HAVE NO REASON TO DOUBT ITS ACCURACY, BUT WE DO NOT GUARANTEE IT. ALL INFORMATION SHOULD BE VERIFIED PRIOR TO PURCHASE OR LEASE.



prestonbendre.com

Randy Jay,
Principal Broker
972.413.0375
randy@prestonbendre.com