

# InterMed

100 Foden Road, South Portland, ME 04106



**BUILDING SIZE**  
**76,672 RSF**

 **VIEW SPACE**

- Class A, three-story medical center on campus-like setting
- Convenient location with direct access to Maine Turnpike, I-95, and I-295
- Diverse tenant roster with robust referral base
- Building and monument signage opportunities
- High-capacity, surface parking with over 260 spots
- Generous Tenant Improvement Allowance with flexible terms



# Three-story, Class A medical center on campus like setting.

POPULATION (5-MILE RADIUS)

118,559

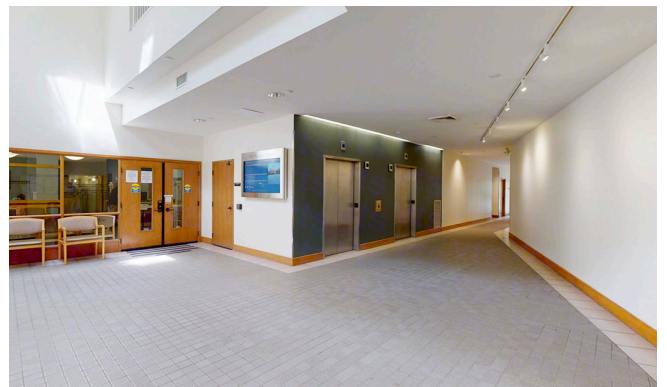
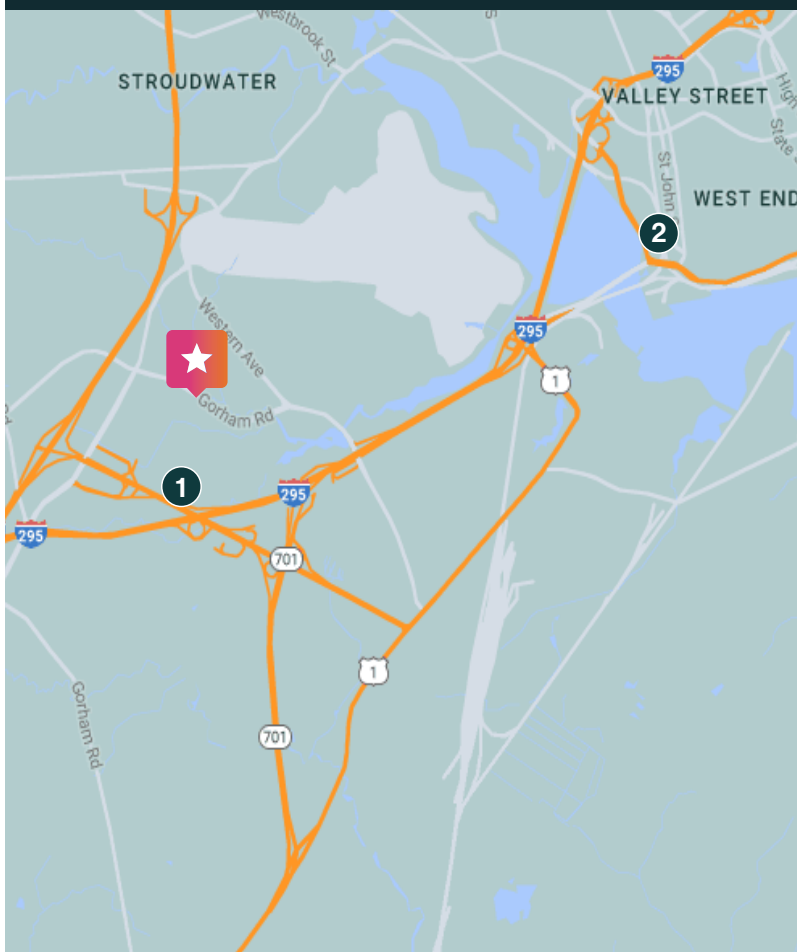
AVERAGE HOUSEHOLD INCOME (5-MILE RADIUS)

\$90,054

PERCENT OF POPULATION INSURED (5-MILE RADIUS)

93.5%

100 FODEN ROAD, SOUTH PORTLAND, ME 04106



## NEARBY HOSPITALS

	DISTANCE	DRIVE TIME
1. Northern Light Mercy Hospital	4.2 mi	8 min
2. Maine Medical Center	4.5 mi	11 min

## SURROUNDING POINTS OF INTEREST

- CVS Pharmacy
- Hannaford
- Shaw's
- Scarborough Gallery
- Mill Creek Shopping Center
- Holiday Inn Express
- Purpodock Club
- Planet Fitness
- Arabica Coffee Company
- Starbucks
- Willows Pizza & Restaurant
- Tuscan Table

## DAN MCGIVNEY, SVP | LEASING

703.615.7009 cell  
dmcgivney@remedymed.com

## NIGEL SMITH, ASSOCIATE | LEASING

301.908.9069 cell  
nsmith@remedymed.com