

ARMONK, NY

355-357 Main Street



OFFICE / MEDICAL SPACE

Features

- Walk to restaurants and shopping
- Easy access to I-684
- 24 hour access
- Covered parking
- On-site management
- Flexible floor plates
- Atrium

Specifications

Size:	355 Main St	Entire 2 nd floor: 6,950 RSF (Divisible)
	357 Main St	Partial 2 nd floor: 3,434 RSF
Rent:		\$29.00 + electric
Availability:		Immediate
Term:		Negotiable

For information, please contact:

Glenn P. Walsh

t 914-881-1096

Glenn.walsh@nrmk.com

Lawrence A. Ruggieri

t 914-881-1025

Larry.ruggieri@nrmk.com

800 Westchester Avenue, Suite S-706, Rye Brook, NY 10573 | nrmk.com

NEWMARK

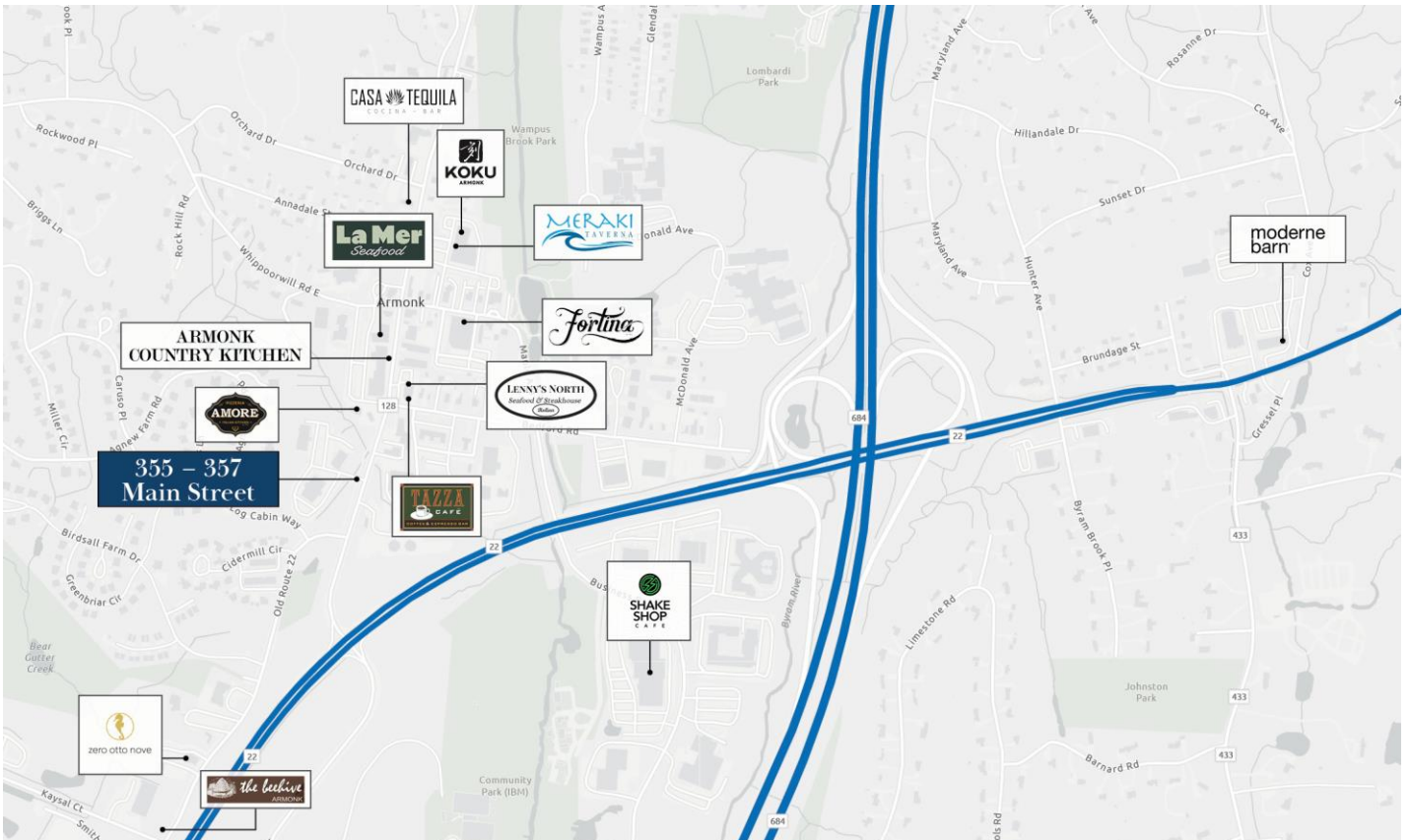
The information contained herein has been obtained from sources deemed reliable but has not been verified and no guarantee, warranty or representation, either express or implied, is made with respect to such information. Terms of sale or lease and availability are subject to change or withdrawal without notice.

355-357 Main Street



800 Westchester Avenue, Suite S-706, Rye Brook, NY 10573 | nrmk.com

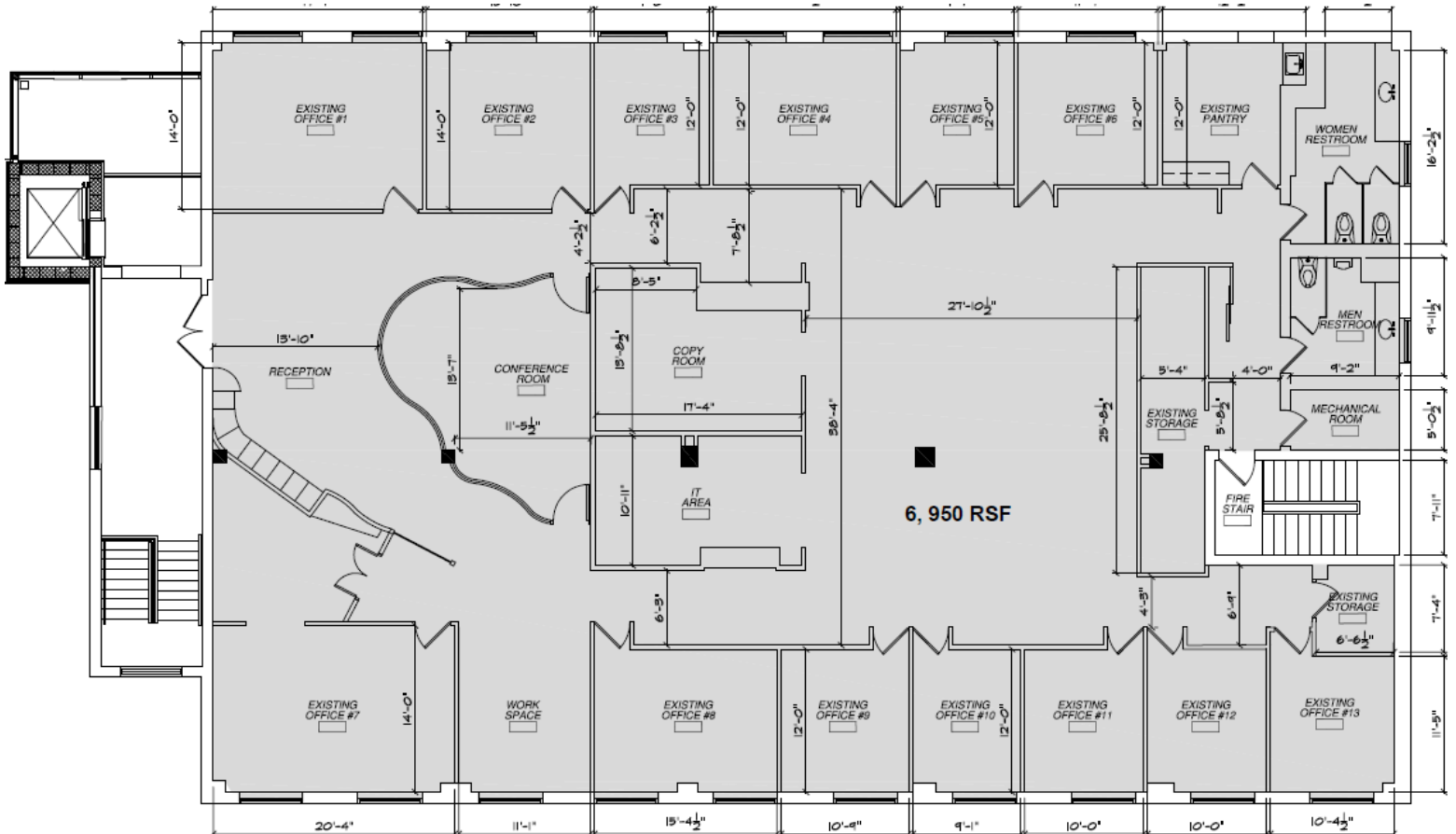
355-357 Main Street



800 Westchester Avenue, Suite S-706, Rye Brook, NY 10573 | nmrk.com

355 Main Street

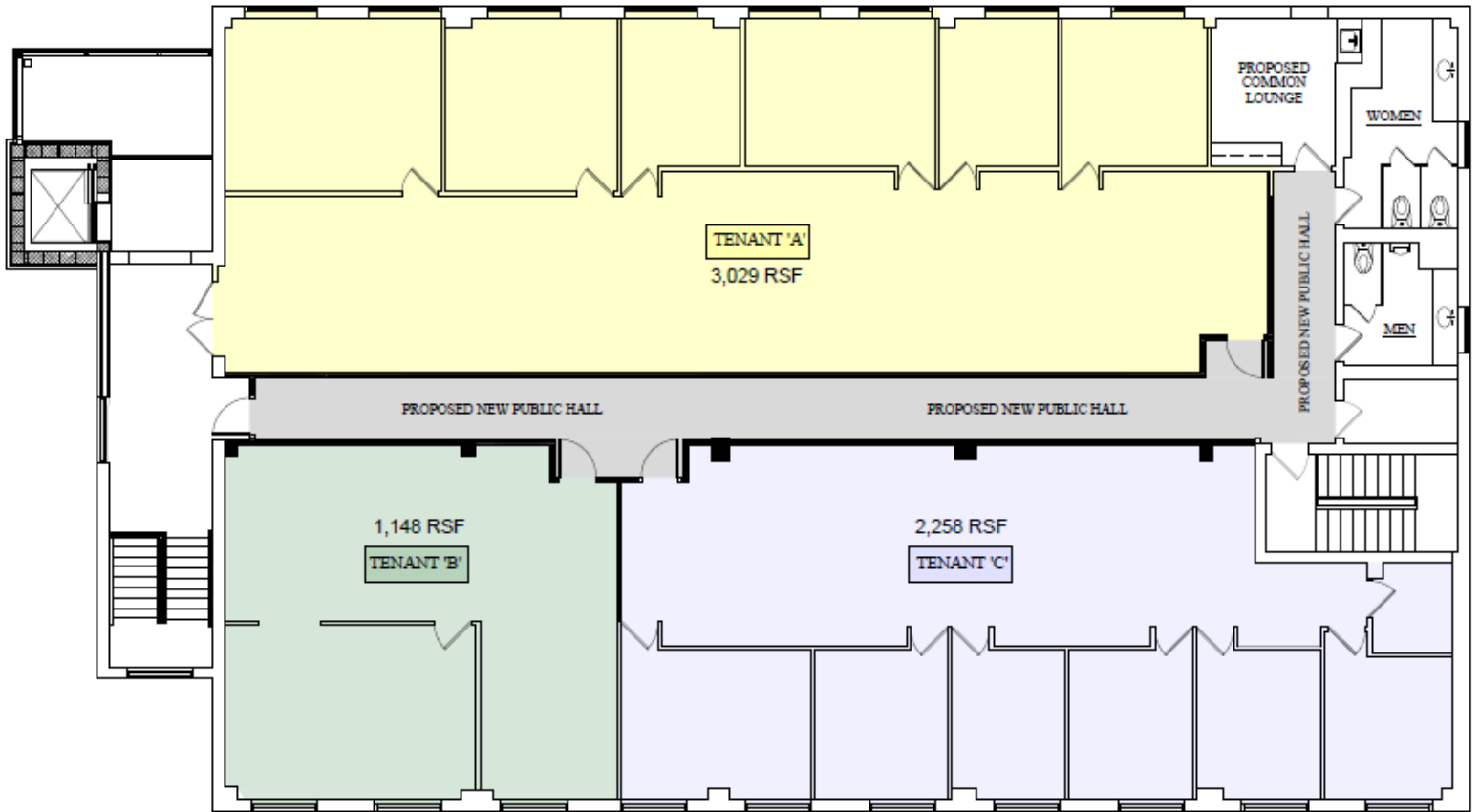
Second Floor – 6,950 RSF



800 Westchester Avenue, Suite S-706, Rye Brook, NY 10573 | nmrk.com

355 Main Street

Second Floor – 6,950 RSF



800 Westchester Avenue, Suite S-706, Rye Brook, NY 10573 | nrmk.com

