



FOR SALE

Turn-Key Auto Service Center in Amazing Location

116 Bruce Drive, Winchester, VA • Asking \$1,500,000

Gillian Greenfield, CCIM | O: (877) 667-7071 | C: (540) 974-3927

©2025 Coldwell Banker. All Rights Reserved. Coldwell Banker and the Coldwell Banker Commercial logos are trademarks of Coldwell Banker Real Estate LLC. The Coldwell Banker® System is comprised of company owned offices which are owned by a subsidiary of Realty Brokerage Group LLC and franchised offices which are independently owned and operated. The Coldwell Banker System fully supports the principles of the Equal Opportunity Act.



COLDWELL BANKER
COMMERCIAL
PREMIER

FOR SALE

TURN-KEY AUTO SERVICE CENTER

116 Bruce Drive | Winchester, VA



PROPERTY DESCRIPTION

Ready for the next generation! Long-standing, successful auto body and repair location facing Pleasant Valley Road with high traffic and excellent visibility. 11,000+ sf facility offers a fully built-out layout including garage, shop, service areas, warehousing, and dedicated office/customer reception space. 27' x 13' paint booth conveys. List of additional equipment available separately. Multiple drive-in doors and work bays. Could have multiple businesses!

Zoned CM1, the building supports a wide range of commercial and light industrial uses, including contractor headquarters, building supply, machine shop, etc.

HIGHLIGHTS:

- Turnkey Commercial Asset
- High Visibility Location Immediately Off Pleasant Valley Road
- Flexible CM1 Zoning Supports Multiple Uses
- 11,000+ sf Building with Extensive Shop & Service Areas
- Ample Parking

Gillian Greenfield, CCIM, Associate Broker

O: (877) 667-7071 | C: (540) 974-3927





Gillian Greenfield, CCIM, Associate Broker

O: (877) 667-7071 | C: (540) 974-3927

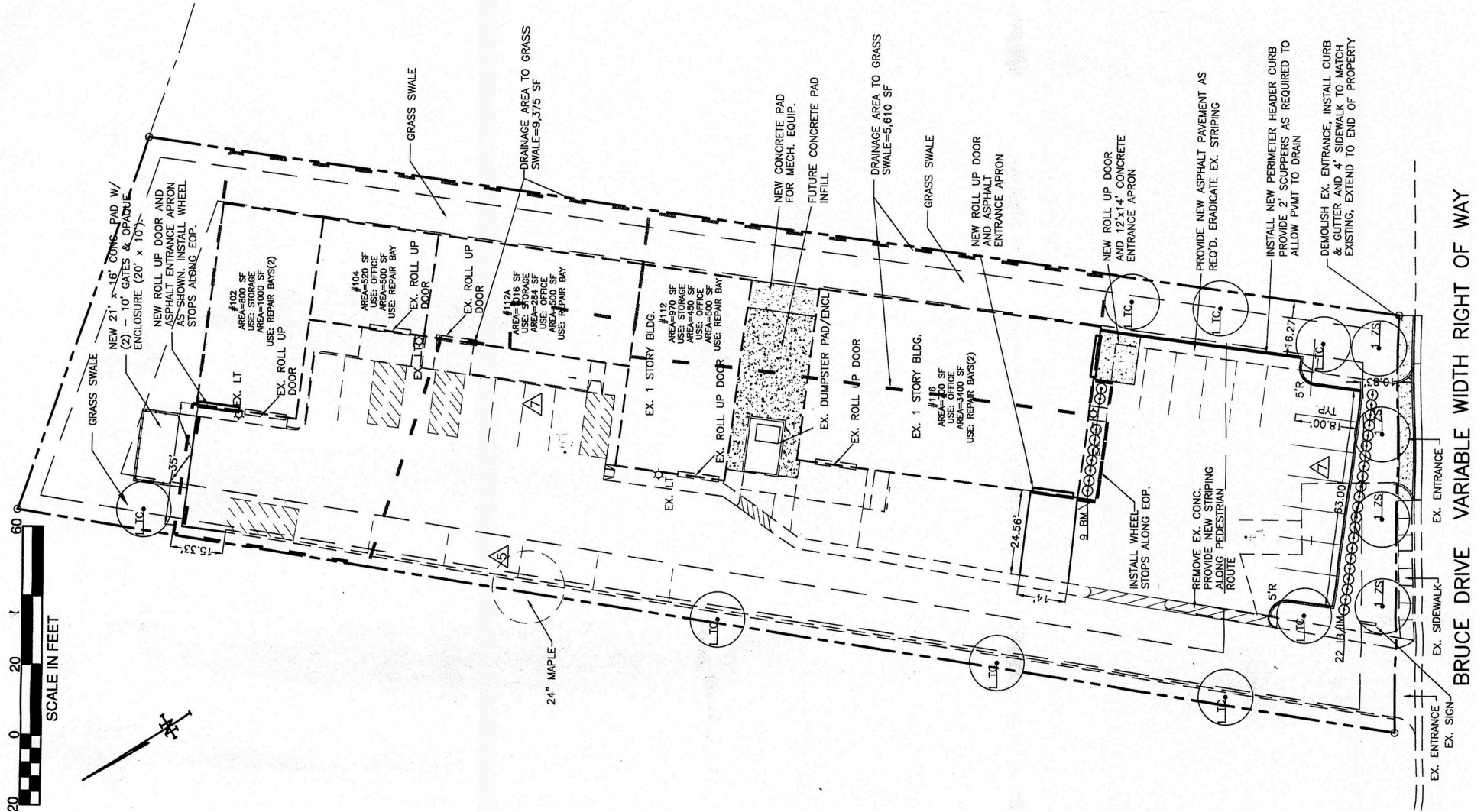


**COLDWELL BANKER
COMMERCIAL
PREMIER**

AS-BUILT DRAWING

TURN-KEY AUTO SERVICE CENTER

116 Bruce Drive | Winchester, VA



Gillian Greenfield, CCIM, Associate Broker
 O: (877) 667-7071 | C: (540) 974-3927



PHOTO TOUR

TURN-KEY AUTO SERVICE CENTER

116 Bruce Drive | Winchester, VA



Gillian Greenfield, CCIM, Associate Broker

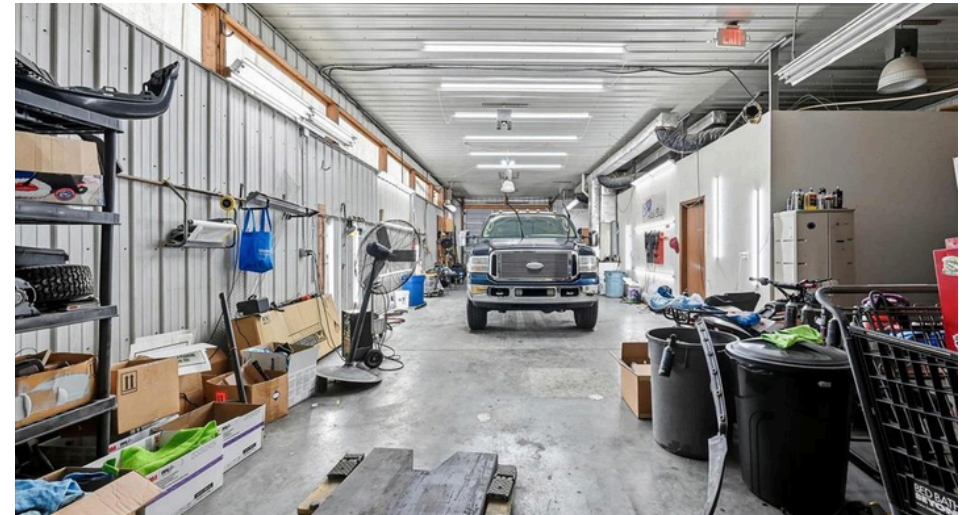
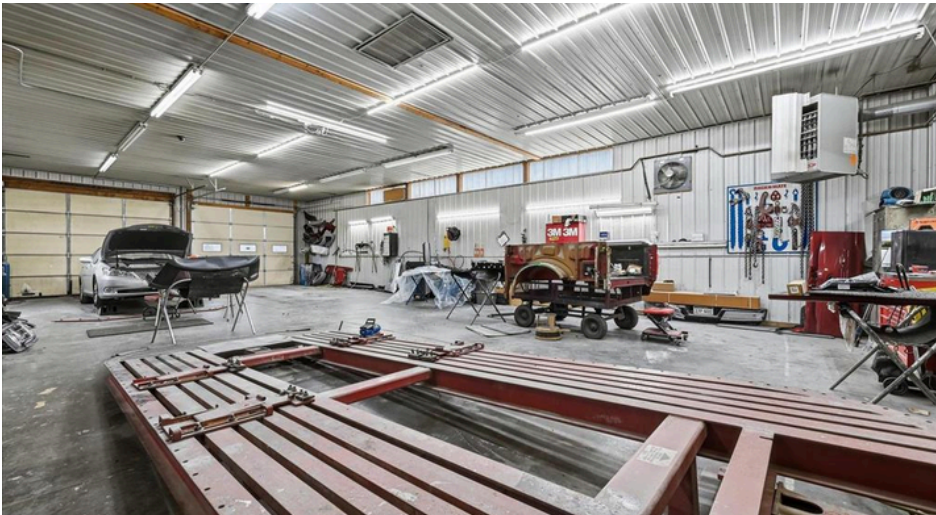
O: (877) 667-7071 | C: (540) 974-3927



PHOTO TOUR

TURN-KEY AUTO SERVICE CENTER

116 Bruce Drive | Winchester, VA



Gillian Greenfield, CCIM, Associate Broker

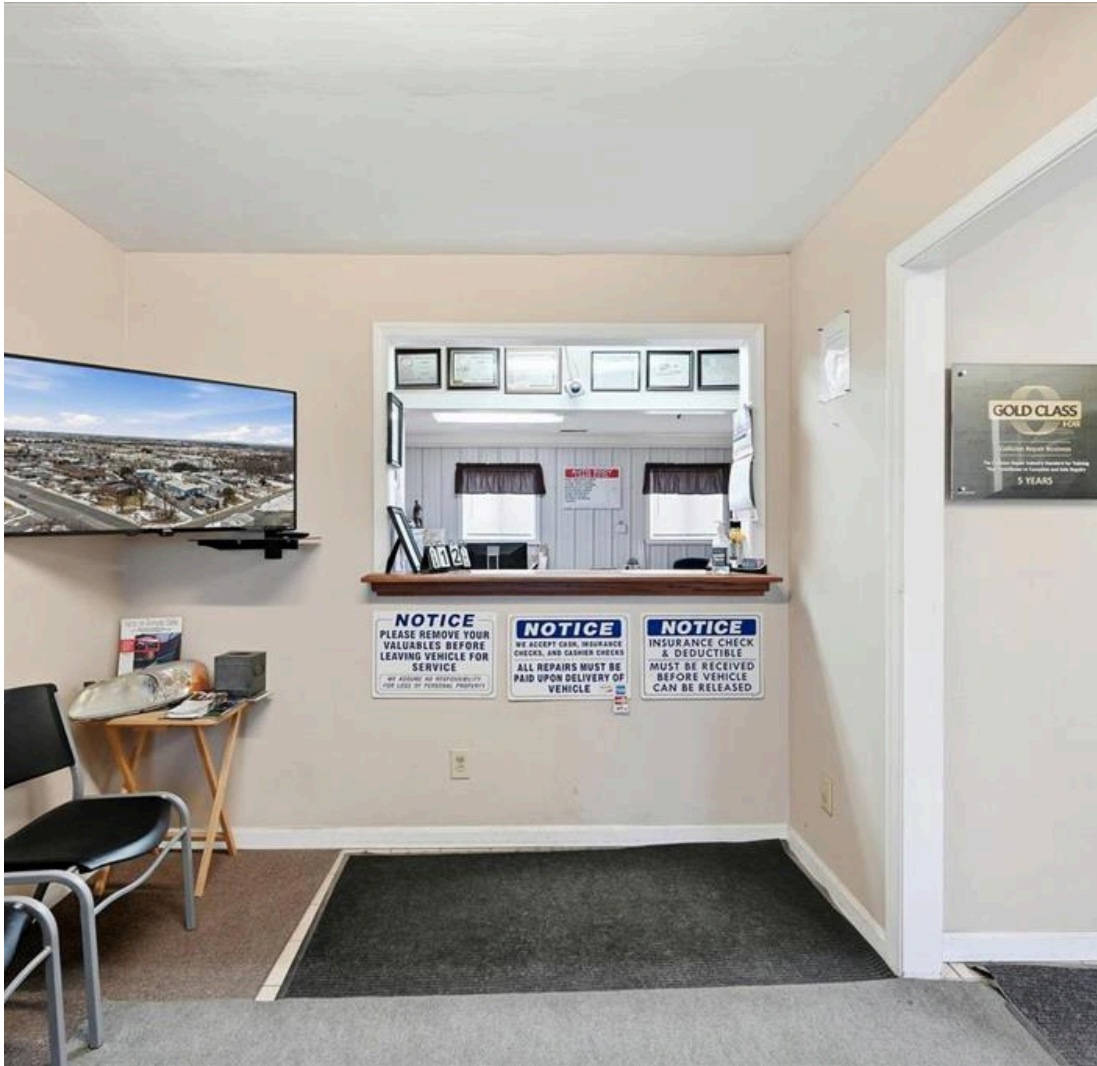
O: (877) 667-7071 | C: (540) 974-3927



PHOTO TOUR

TURN-KEY AUTO SERVICE CENTER

116 Bruce Drive | Winchester, VA



Gillian Greenfield, CCIM, Associate Broker

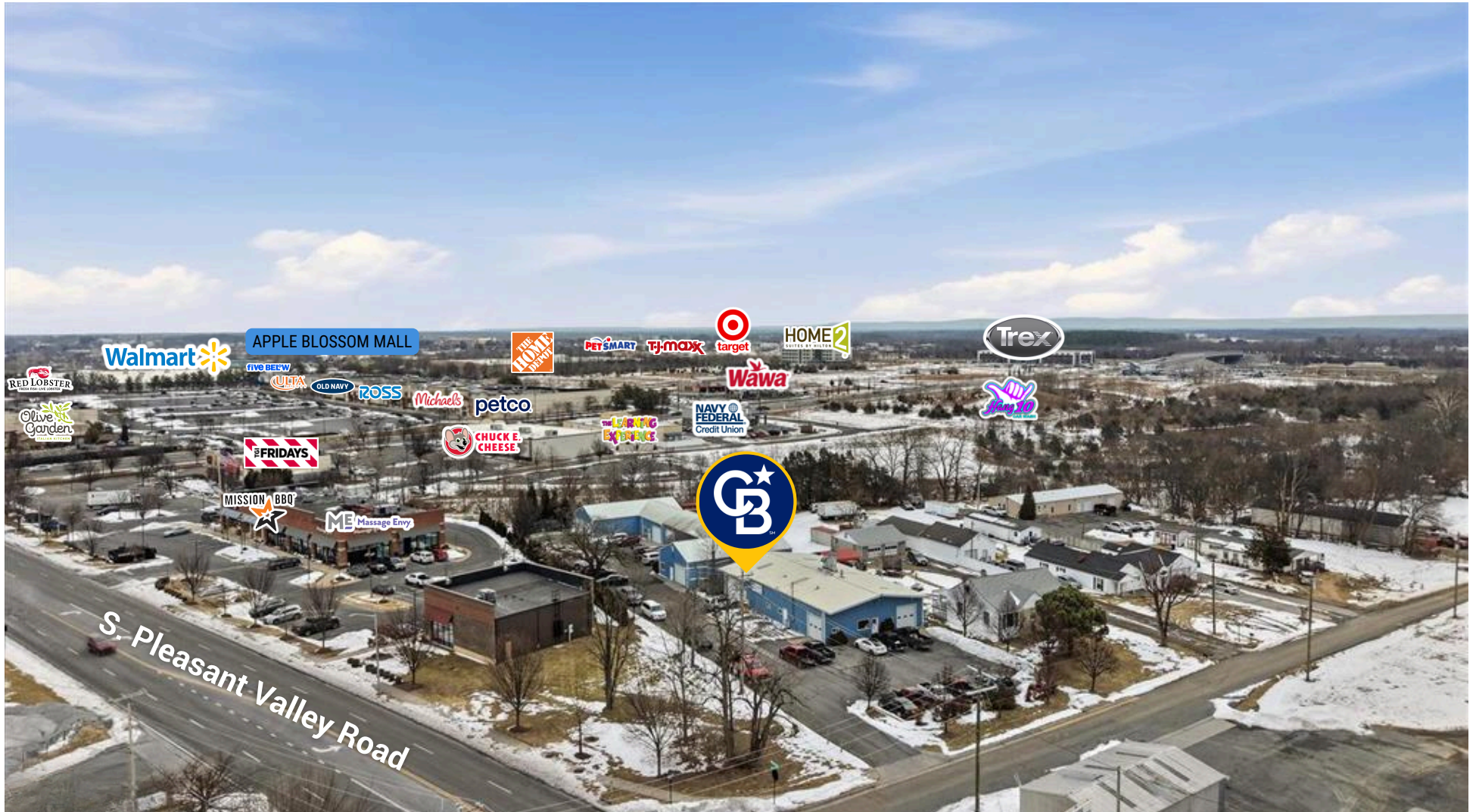
O: (877) 667-7071 | C: (540) 974-3927



AERIAL VIEW

TURN-KEY AUTO SERVICE CENTER

116 Bruce Drive | Winchester, VA



Gillian Greenfield, CCIM, Associate Broker

O: (877) 667-7071 | C: (540) 974-3927



COLDWELL BANKER
COMMERCIAL
PREMIER

LOCATION

TURN-KEY AUTO SERVICE CENTER

116 Bruce Drive | Winchester, VA



For over a decade, Winchester has consistently ranked in the top 20% of Virginia localities for new capital investment and job growth. The area has been recognized nationally by Forbes as one of the "Best Small Places for Business & Careers" and named one of Site Selection magazine's "Top 10 Tier-3 Metro Areas." These accolades reflect the region's thriving, diversified economy, which is powered by industries ranging from manufacturing, logistics, and finance to technology, healthcare, and startups. Winchester's consistent rise in new housing developments, medical facilities, and educational institutions further bolsters the consumer base that retailers depend on.

Recent years have brought major corporate investments and expansions, particularly in distribution and manufacturing, with companies attracted by the region's skilled workforce and logistical advantages. This economic vitality fuels consumer spending, population growth, and demand for retail services.

Location is everything in real estate, and Winchester delivers. Situated just 80 miles west of Washington, D.C., the area sits at the crossroads of I-81 and I-66, with access to CSX rail, Winchester & Western rail lines, and three major international airports — making it a logistical sweet spot for retail distribution and supply chains.

Winchester's strong labor force extends across a ten-county region in Virginia, Maryland, and West Virginia, encompassing over 360,000 workers. With 91% holding a high school diploma and 41% having an associate's degree or higher, the area boasts an educated and versatile talent pool.

Winchester presents an exceptional opportunity for investing in commercial real estate. This picturesque region isn't just a magnet for tourists and residents — it's a growing economic hub that offers strategic advantages for both immediate value and long-term potential.

Gillian Greenfield, CCIM, Associate Broker

O: (877) 667-7071 | C: (540) 974-3927

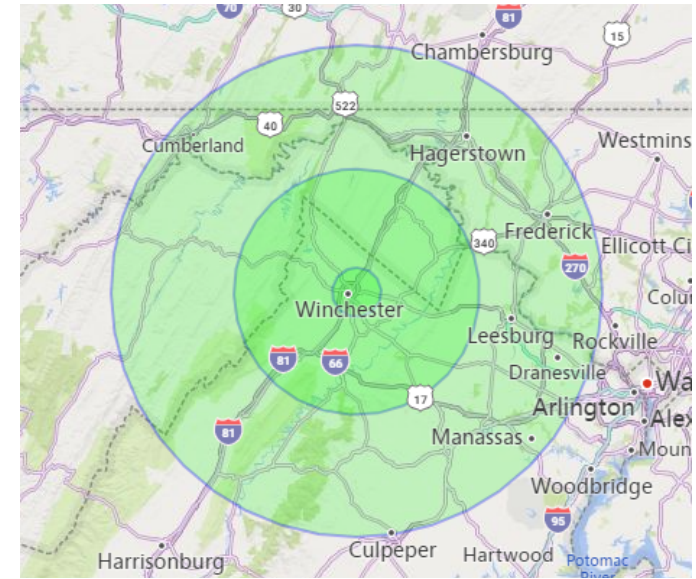


DEMOGRAPHICS

TURN-KEY AUTO SERVICE CENTER

116 Bruce Drive | Winchester, VA

	5 Miles		25 Miles		50 Miles	
Population						
2024 Population	71,395	---	406,815	---	2,522,587	---
2029 Projected Population	76,155	---	429,157	---	2,665,962	---
2029 Projected Population (High Estimate)	82,426	---	461,630	---	2,861,033	---
2029 Projected Population (Low Estimate)	73,479	---	416,925	---	2,548,500	---
% Projected Annual Change (2024 - 2029)	1.3%	---	1.1%	---	1.1%	---
% Projected Annual Change (High Estimate)	3.1%	---	2.7%	---	2.7%	---
% Projected Annual Change (Low Estimate)	0.6%	---	0.5%	---	0.2%	---
2000 Census Population	47,777	---	263,482	---	1,636,464	---
2010 Census Population	67,306	---	381,467	---	2,406,841	---
% Annual Change (2010 - 2024)	0.4%	---	0.5%	---	0.3%	---
Population Density	942	---	210	---	325	---
Land Area (Square Miles)	75.78	---	1,937.77	---	7,773.32	---
Households						
2024 Households	27,243	---	154,968	---	905,875	---
2029 Projected Households	29,049	---	163,410	---	957,047	---
% Projected Annual Change (2024 - 2029)	1.3%	---	1.1%	---	1.1%	---
2000 Households	19,109	---	102,181	---	602,781	---
2010 Households	25,644	---	145,170	---	863,680	---
% Annual Change (2010 - 2024)	2.4%	---	3.0%	---	3.1%	---
Growth Stability Indicator (-1 to +1)	0.4924	---	0.4777	---	0.4797	---
Income (2024)						
Per Capita Income	\$40,247	---	\$42,988	---	\$54,320	---
Average Household Income	\$105,475	---	\$112,849	---	\$151,265	---
Median Household Income	\$84,762	---	\$93,276	---	\$121,629	---
Income (2029 Projected)						
Per Capita Income	\$49,478	---	\$53,264	---	\$68,075	---
Average Household Income	\$129,715	---	\$139,886	---	\$189,632	---
Median Household Income	\$105,922	---	\$115,007	---	\$144,358	---
Economic Indicators (2024)						
Gross Domestic Product (GDP) - in 1,000s	\$5,856,315	---	\$30,497,602	---	\$240,658,155	---
Economic Viability	285	---	291	---	318	---
Economic Viability, Indexed	100	---	102	---	112	---
Average Salary	\$46,665	---	\$51,793	---	\$61,393	---
Average Mortgage-Risk	3.54	---	3.46	---	3.59	---



Gillian Greenfield, CCIM, Associate Broker

O: (877) 667-7071 | C: (540) 974-3927

