



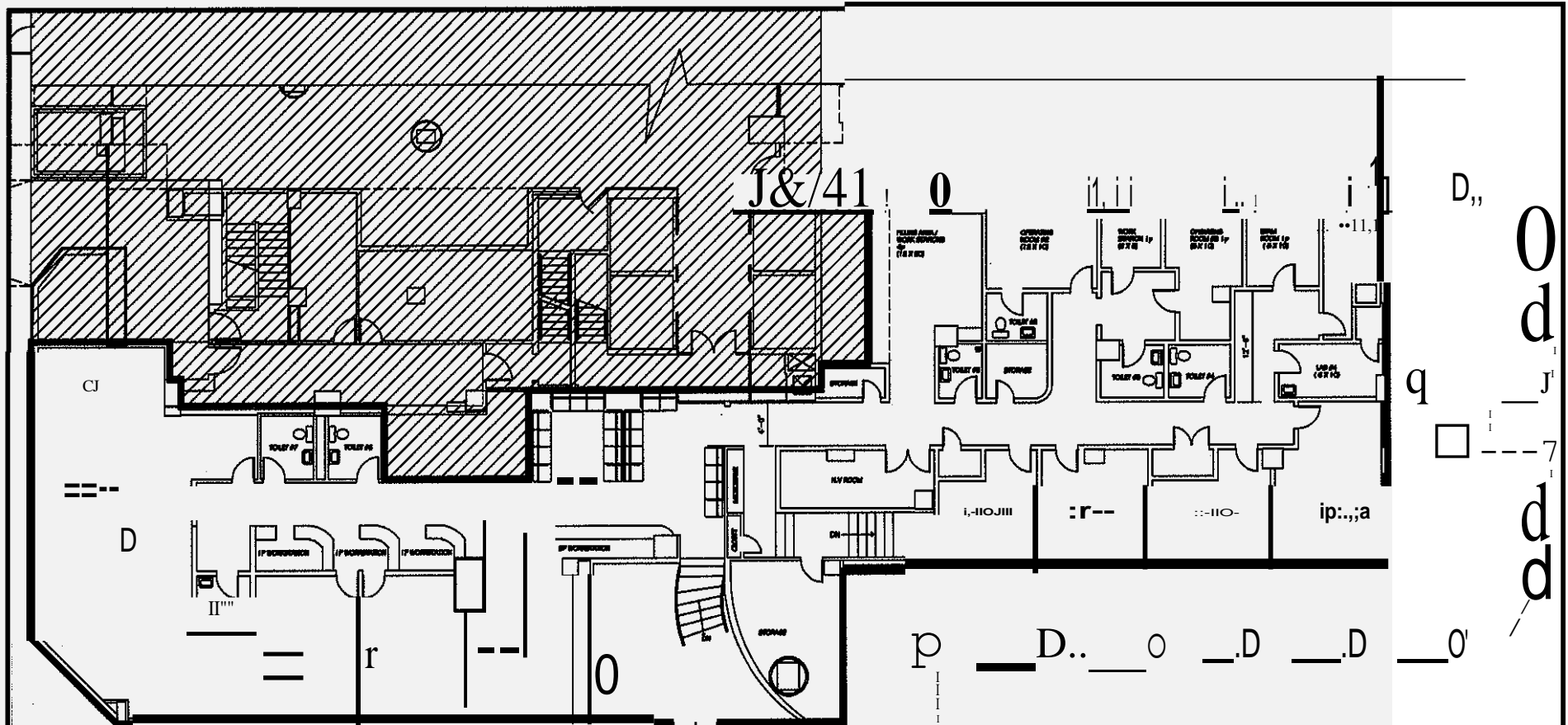
1619 Third Avenue, New York, NY 10128 p (212) 534-7771 f (212) 534-6140

www.rymanagement.com

RUPPERT YORKVILLE TOWERS

Office Space Available

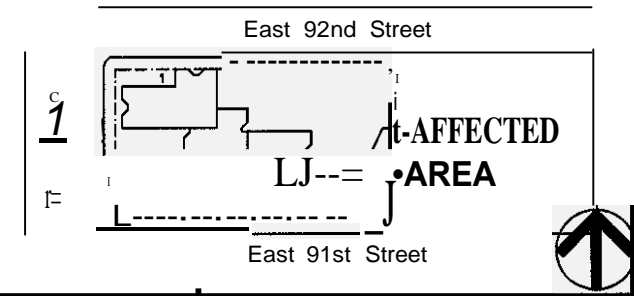
- LOCATION:** 1623 Third Avenue – Ground floor and lower level
- RENT:** \$51.26/sq. foot, \$35,000/mth.
- AVAILABLE DATE:** March 1, 2024
- SQUARE FOOTAGE:** Approximately 6,095 sq. ft. on the ground floor and 2,097 sq. ft. on the lower level (8192 total).
- UTILITIES:** Electric: (including electricity for air conditioning and heating of the Premises) – submetered – paid by tenant – tenant to pay kwh rate paid by landlord plus \$.02 per kwh handling fee.
Water: Submetered – paid by tenant
Gas: None available.
- REAL ESTATE TAXES:** Tenant will pay its proportionate share of landlord's real estate taxes allocated to the space each year over and above a base year (prorated for any partial years).
- BROKERAGE FEES:** RY Management Co., Inc. is the exclusive leasing agent for this space; brokerage fees to be paid by landlord. Landlord will also pay commission on any pre-approved, co-brokerage arrangement for this space. However, if tenant engages the services of another broker and it is not a pre-approved, co-brokerage arrangement, all fees and commissions to be paid by tenant to tenant's broker.



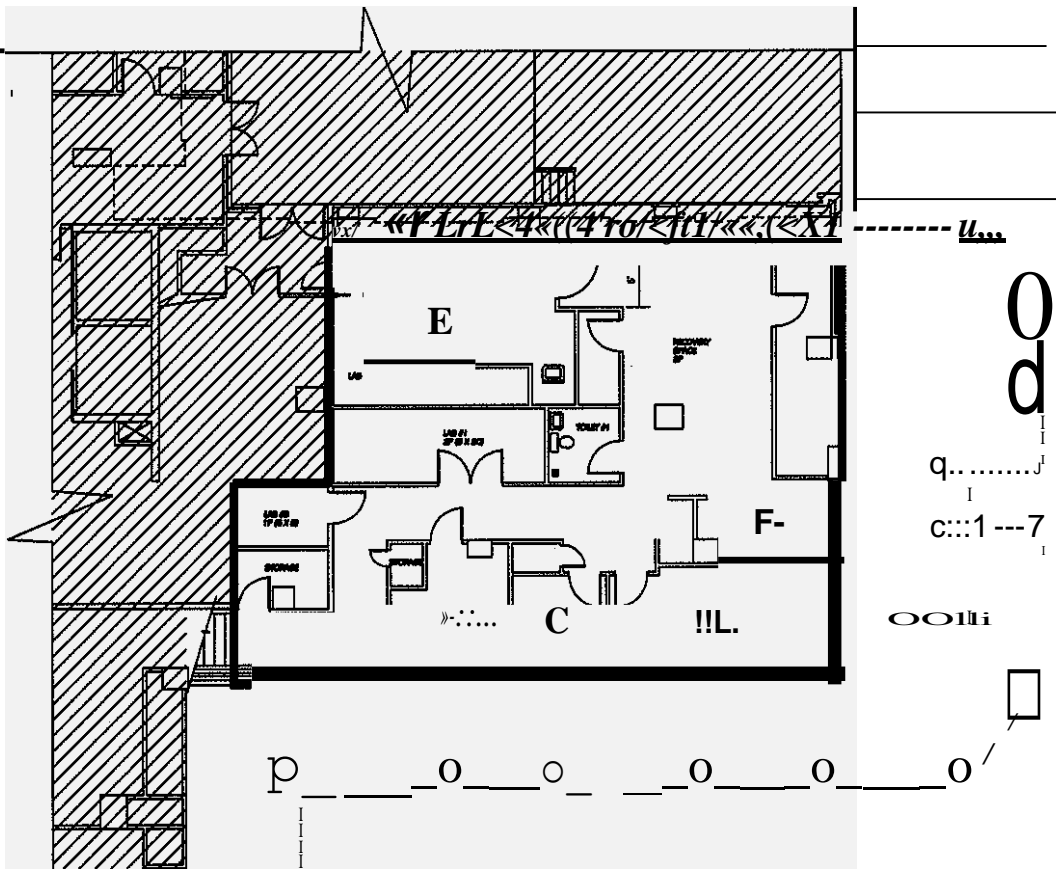
fi] =, =="::l:::-"w m_JTI
 "Q]__ [g_J' L_Jg]_ l□V'

GROUND FLOOR TOTAL SQ. FT.: 8095
GROUND & LOWER LEVEL TOTAL SQ. FT.: 8,192

0 **GROUND FLOOR OFFICE PLAN**
 SCALE: 1/111" = 1'

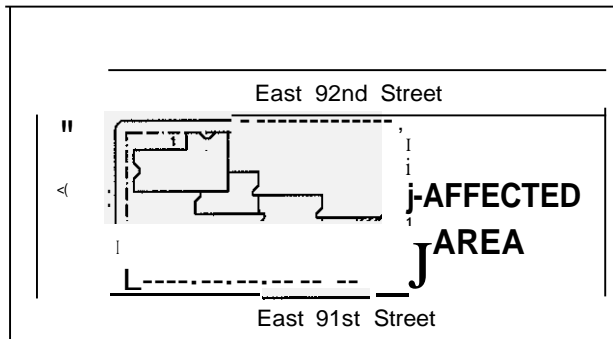


OFFICE SPACE
 1635 AVENUE NEW YORK, NY 10128



LOWER LEVEL TOTAL SQ. FT. : 2097
GROUND & LOWER LEVEL TOTAL SQ. FT.: 8192

LOWER LEVEL OFFICE PLAN
 1/11-10



OFFICE SPACE

1635 AVENUE NEW YORK, NY 10128