

Mayport Coastal Sciences
Middle School

Atlantica Apartments

Parcel A

Parcel B

Kathryn Abbey Hanna Park

Mayport Naval Station

Mayport Road/A1A

Reef Retail
South



Reef Retail
North

11,300 AADT

Parcel C

Ocean Blue
Apartments



For Ground Lease or Build-to-Suit

Call for Pricing

The REEF

Multi-use Development
ReefRetailjax.com

[View Website](#)

Contact:

Jason K. Hinson
Senior Associate
+1 904 861 1106
jason.hinson@colliers.com

Colliers

76 S. Laura Street | Suite 1500
Jacksonville, FL 32202
colliers.com/jacksonville

Pad-Ready Retail Parcels

Mayport Road/A1A | Jacksonville, FL 32233

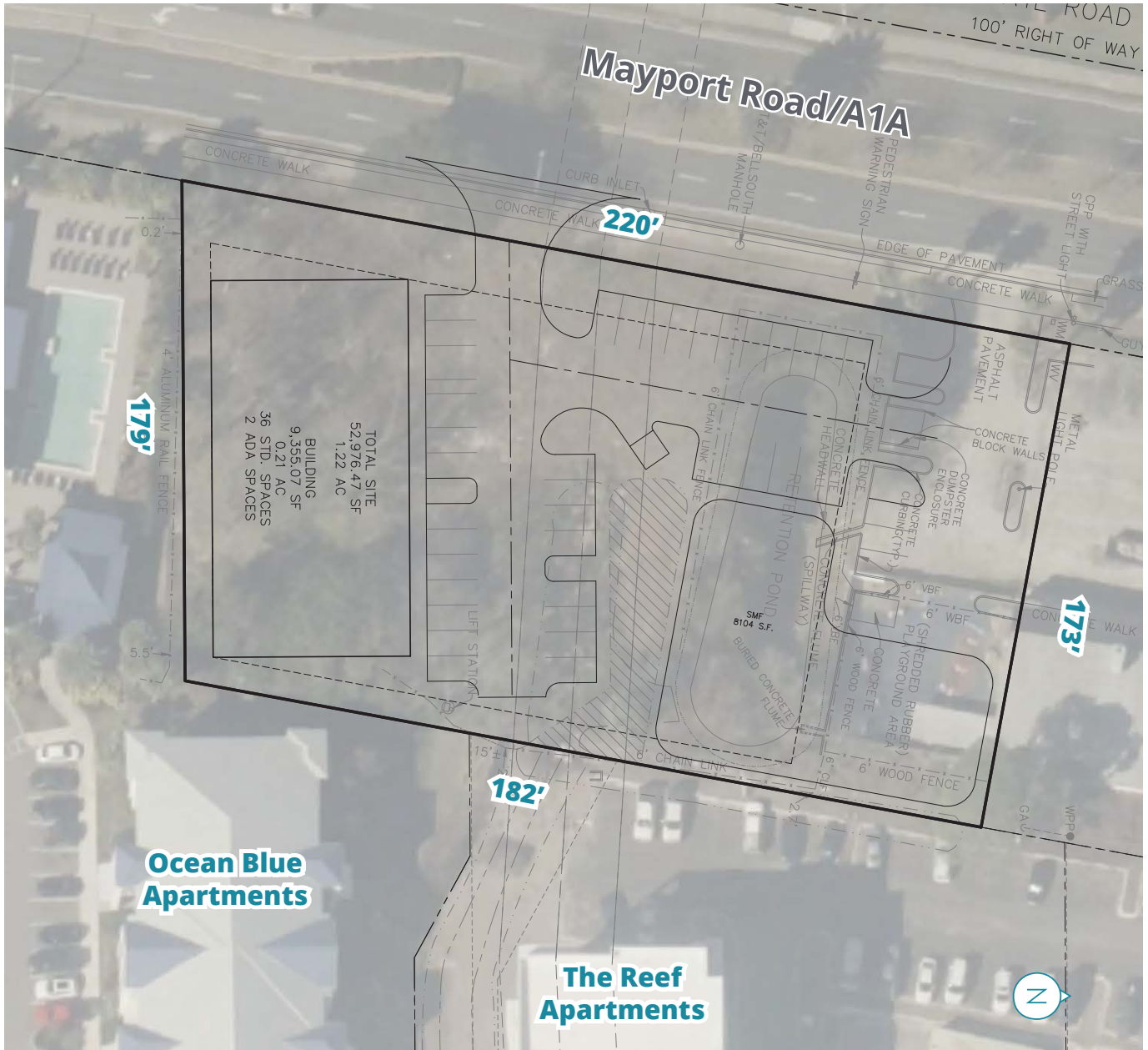
Parcel A:	1± AC
Parcel B:	0.68± AC
Parcel C:	1.04± AC

Property Highlights

- Retail pads for ground lease or build-to-suit
- Sites to be delivered pad ready
- Located in The Reef, new mixed-use development in the revitalized area of the northern end of the Beaches/Mayport Rd
- Just south of the Naval Station Mayport and Kathryn Abbey Hanna Park state park

0 Mayport Road

Parcel A



Lot Size: 1± AC

Parcel # 168355-0065

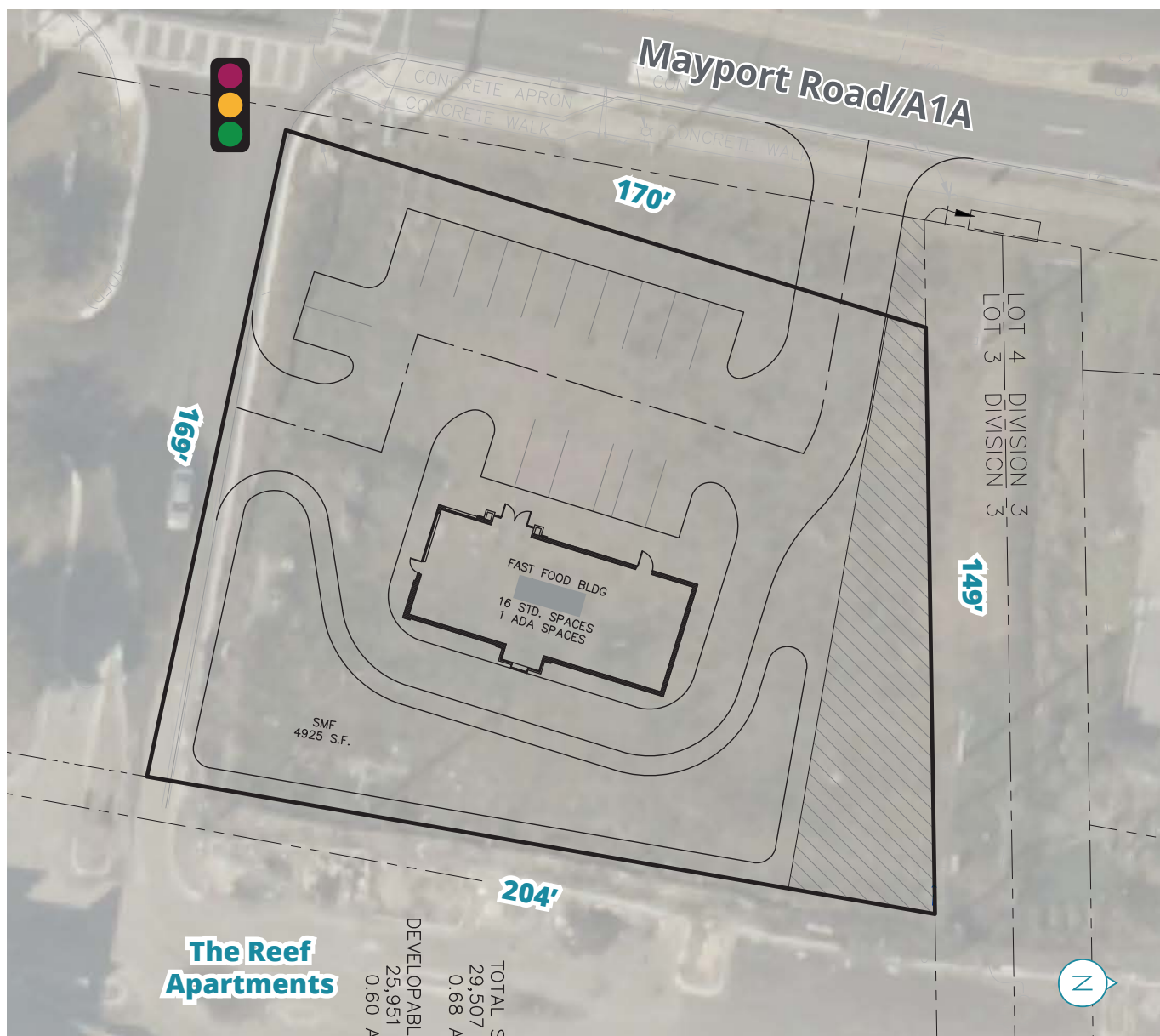
Zoning: CCG-1

Property Highlights

- Outparcel with 9,355± SF of buildable structure
- Positioned south of Reef Retail and in front of The Reef Apartments (456 multifamily units)
- 11,300± AADT

2757 Mayport Rd

Parcel B



Lot Size: 0.68± AC

Parcel # 168355-0100

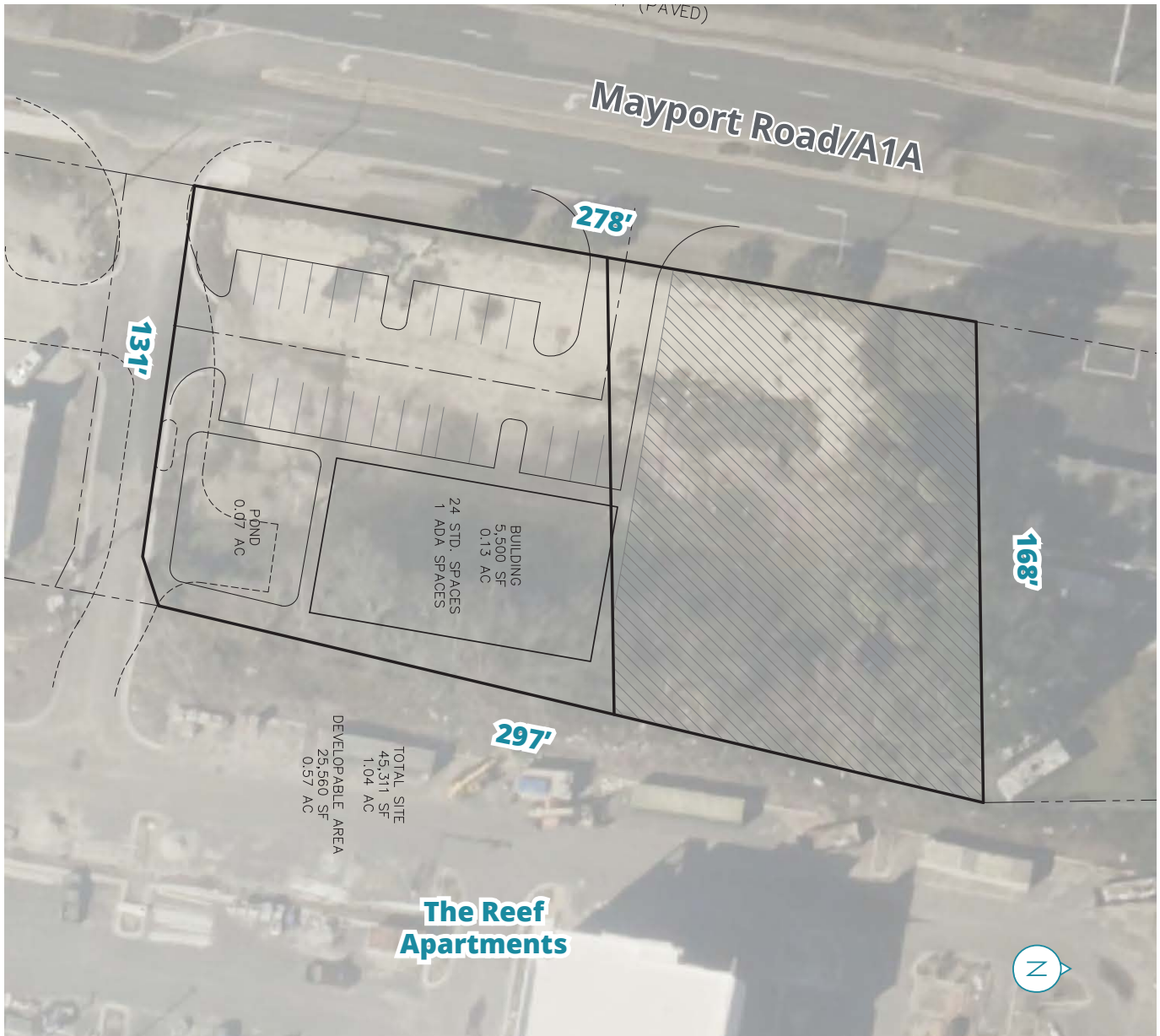
Zoning: CCG-2

Property Highlights

- Signalized corner outparcel with 2,500± SF of buildable structure with drive thru
- Positioned at the front main entrance in The Reef Apartments (456 multifamily units)
- 11,300± AADT

2787 Mayport Rd

Parcel C



Lot Size: 1.04± AC

Parcel # 168366-0100

Zoning: CCG-2

Property Highlights

- Outparcel with 5,500± SF of buildable structure with drive thru
- Positioned north of Reef Retail and in front of The Reef Apartments (456 multifamily units)
- 11,300± AADT

Area Residential Developments



- 1 Mayport Naval Station | Population of 34,315
- 2 Reef Luxury Apartments | 456 units
- 3 Ocean Blue Apartments | 156 units
- 4 Atlantica Apartments
- 5 The Villas at Atlantic Beach Apartments
- 6 Courtyard Townhomes
- 7 Fleet Landing Senior Living
- 8 Atlantic Beach Country Club
- 9 Haywood Estates Apartments
- 10 33East Apartment Homes
- 11 Schooners Bay Subdivision
- 12 Atlantic Beach Reserve Luxury Townhomes | 166 units
- 13 Cypress Creek Townhomes
- 14 The Park at Rossini Apartment Homes
- 15 Oak Harbor Single-Family Homes | 3,001 residents
- 16 Mayport Landing South Apartment Homes
- 17 Mallard Cove Apartments
- 18 Mayport Landing North Apartment Homes
- 19 Deerfield Lakes Condos
- 20 Athem Lakes Senior Living | 119 units
- 21 Outter Run Apartments | 192 units
- 22 Ribault Bay Village Apartments | 353 units
- 23 Cypress Landing Family Homes
- 24 Ocean Walk Single Family Homes

Area Demographics | 5 mi radius

Source: ESRI Business Analyst



2022 Estimated Population

79,672



2022 Est. Avg. Household Income

\$119,961



2027 Projected Population

80,612



2027 Proj. Avg. Household Income

\$139,175



The Reef at Atlantic Beach

The Reef Apartments sits on 24 acres and consists of 456 units. Ocean views are visible from all units above the third floor. Just northeast of The Reef Apartments is Kathryn Abbey Hanna Park which offers 1.5 miles of oceanfront property, over 20 miles of hiking and bike trails, and a 60-acre lake. Amenities include a rooftop terrace, fitness center, pool, dog park, pet spa, car wash, bike storage, and electric vehicle charging stations.

Source: kabrgroup.com/property/the-reef-apartments



The Reef Apartments



Jason K. Hinson

Senior Associate
+1 904 861 1106
jason.hinson@colliers.com

76 S. Laura Street | Suite 1500
Jacksonville, FL 32202
colliers.com/jacksonville

Colliers

This document has been prepared by Colliers International for advertising and general information only. Colliers International makes no guarantees, representations or warranties of any kind, expressed or implied, regarding the information including, but not limited to, warranties of content, accuracy and reliability. Any interested party should undertake their own inquiries as to the accuracy of the information. Colliers International excludes unequivocally all inferred or implied terms, conditions and warranties arising out of this document and excludes all liability for loss and damages arising there from. This publication is the copyrighted property of Colliers International and/or its licensor(s). ©2023. All rights reserved.