



FOR LEASE

MOVE-IN READY OFFICE SPACE

1935 SOUTHEAST JEFFERSON STREET, MILWAUKIE, OR 97222

CHARLES HASELWOOD

503.515.6959

charles@macadamforbes.com

JOE KAPPLER

503.972.7294

joek@macadamforbes.com





PROPERTY DESCRIPTION

This move-in-ready office space has a fun story to tell of a small company that grew into a real success in both Hollywood and around the globe. Old-world building charm on the outside, with modern finishes throughout, making it ideal for businesses of all sizes. The second floor has a walkout to the rooftop for additional vantage points of the scenic Willamette waterfront and river. Office space is not elevator-served.

PROPERTY HIGHLIGHTS

- Modern, customizable office space
- Newer remodel and update
- 24/7 building access
- Prime, easily accessible location

OFFERING SUMMARY

Lease Rate:	\$24.50 SF/yr (MG)
Available SF:	4,180 SF

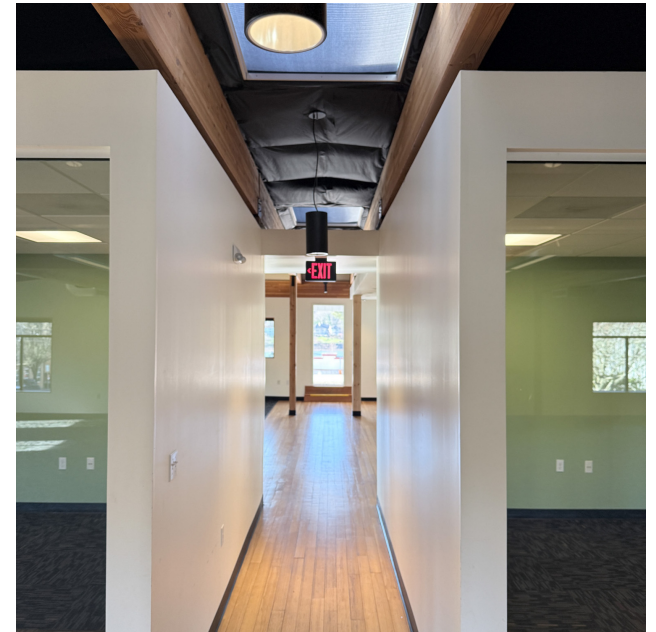
DEMOGRAPHICS	0.3 MILES	0.5 MILES	1 MILE
Total Households	276	1,132	4,625
Total Population	582	2,340	10,000
Average HH Income	\$89,194	\$99,870	\$108,658

CHARLES HASELWOOD

503.515.6959 | charles@macadamforbes.com

JOE KAPPLER

503.972.7294 | joek@macadamforbes.com



CHARLES HASELWOOD

503.515.6959 | charles@macadamforbes.com

JOE KAPPLER

503.972.7294 | joek@macadamforbes.com

